




## Geologic Setting of North Trail Office Park



SPC-2023-0357C

-  Glen Rose Limestone
-  Edwards Formation Limestone
-  Potential Seep Zones

### **Septic Systems**

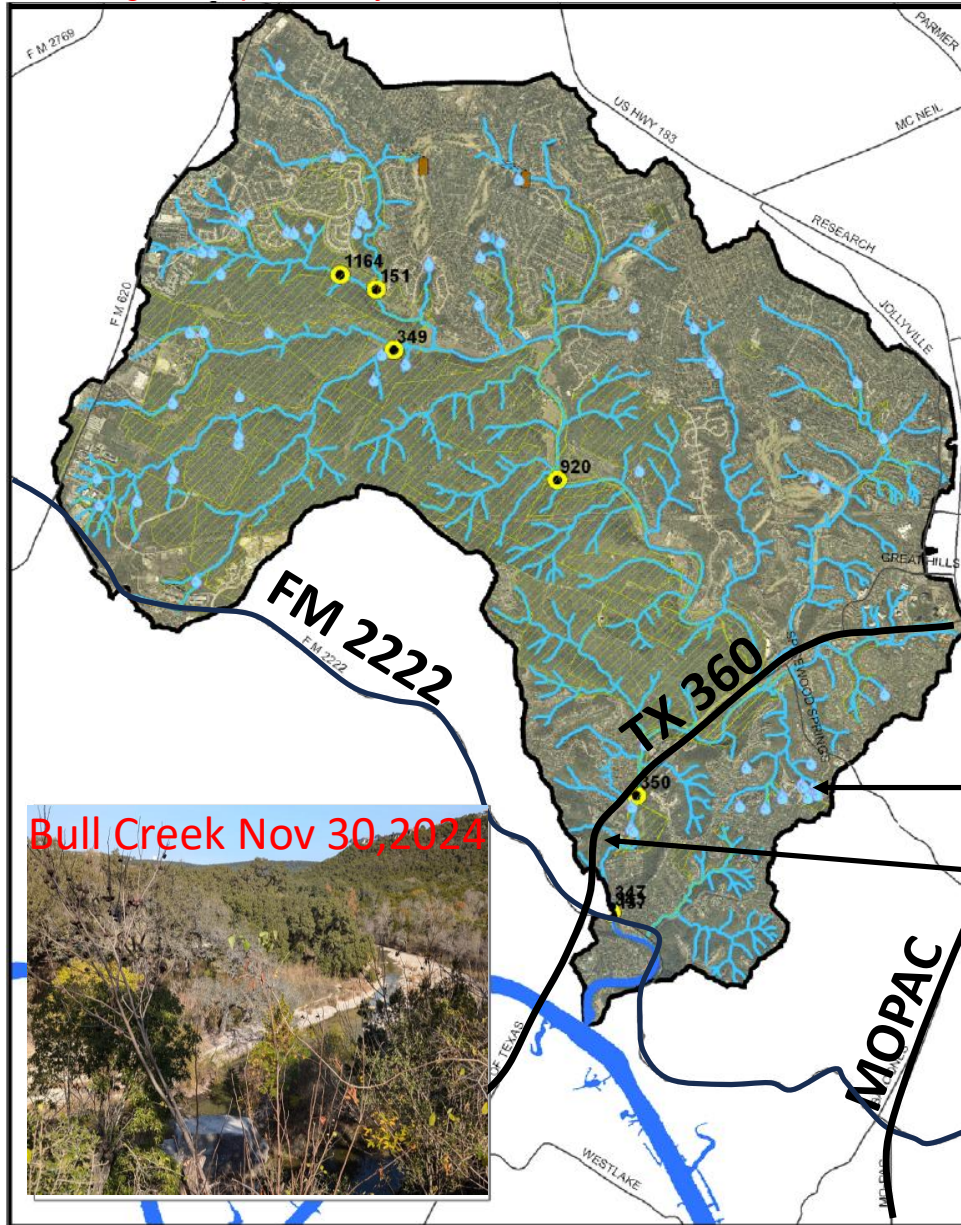
are part of the “Urban” sources of seeps

1.5 miles

Source: [www.austintexas.gov/watershed](http://www.austintexas.gov/watershed)

# Bull Creek Watershed Aerial Map

Water quality "Fair"  
near our neighborhood

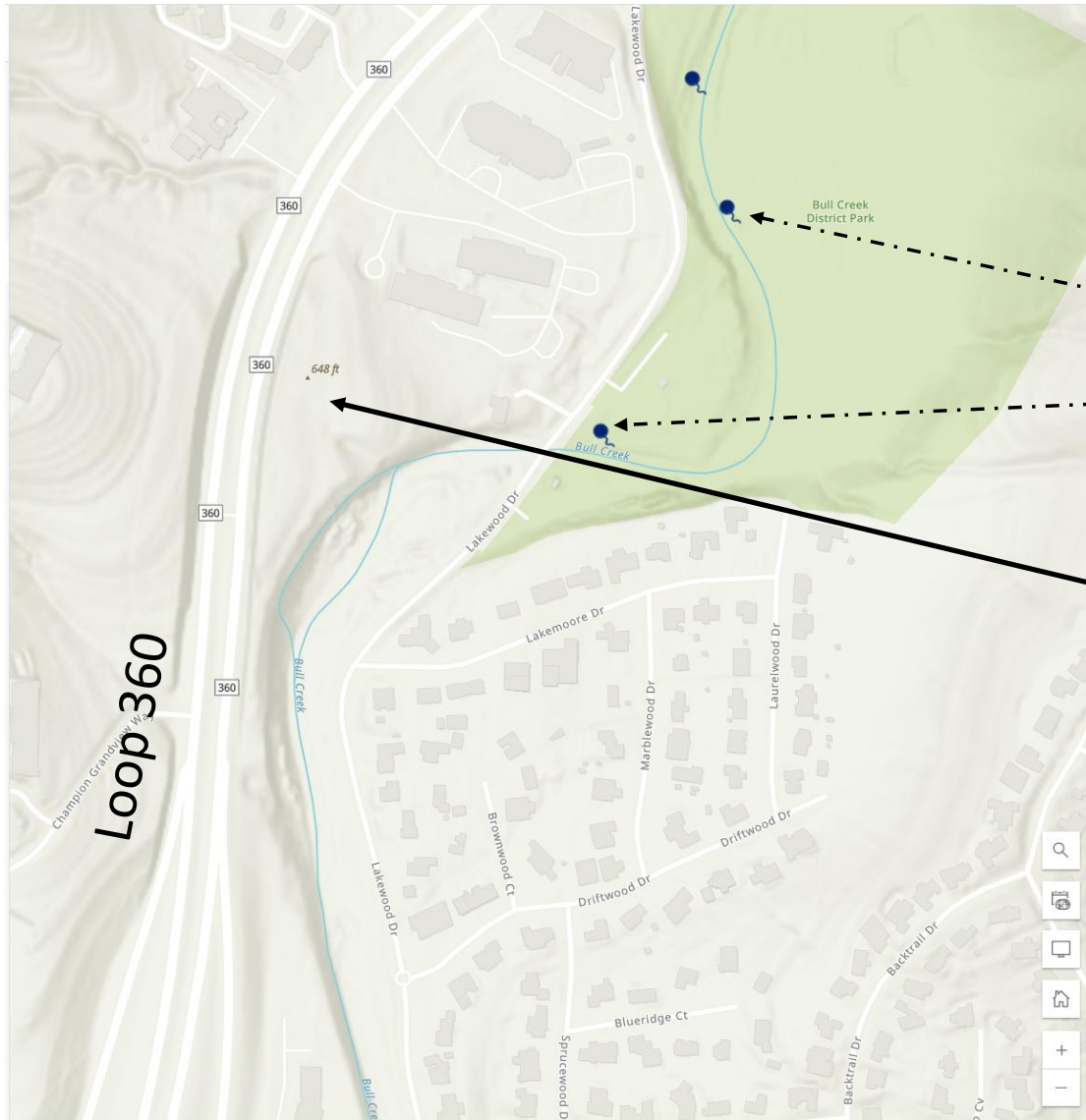


Springs

SPC-2023-0357C

1 mile

[https://www.austintexas.gov/sites/default/files/files/Watershed/eii/Bull\\_EII\\_ph2\\_2010.pdf](https://www.austintexas.gov/sites/default/files/files/Watershed/eii/Bull_EII_ph2_2010.pdf)



## Location Map Lakewood Club/Bull Creek Park/

Springs

SPC-2023-0357C

1,000 feet

<https://www.arcgis.com/apps/mapviewer/index.html?panel=gallery&suggestField=true&layers=5c802127affb451385d24adf088c231a>

## Municipal Water Flow in Bull Creek

- Much of the water that flows through **Bull Creek can be traced back to municipal sources**
- “That means if you turned off **all the leakage and the irrigation**, then some urbanized regions of Bull Creek and its tributary channels would **lose a large amount of stream flow, more than 50% during non-rainstorm conditions**”

*Source: Beal, L., Senison, J., Banner, J., Musgrove, M. L., Yazbek, L., Bendik, N., et al. (2020). Stream and spring water evolution in a rapidly urbanizing watershed, Austin, TX. Water Resources Research, 56, e2019WR025623. <https://doi.org/10.1029/2019WR025623>*

## Our Appeal

- Council should over-rule the ZAP decision of December 17, 2024 on SPC-2023-0357C
- Developer should seek alternative to OSSF
- At a minimum an OSSF with enhanced treatment and reduced or no leach field be required