

EXHIBIT A


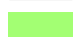




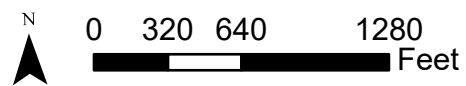
Copyright nearmap 2015, Austin

11703 Charing Cross Road - D10

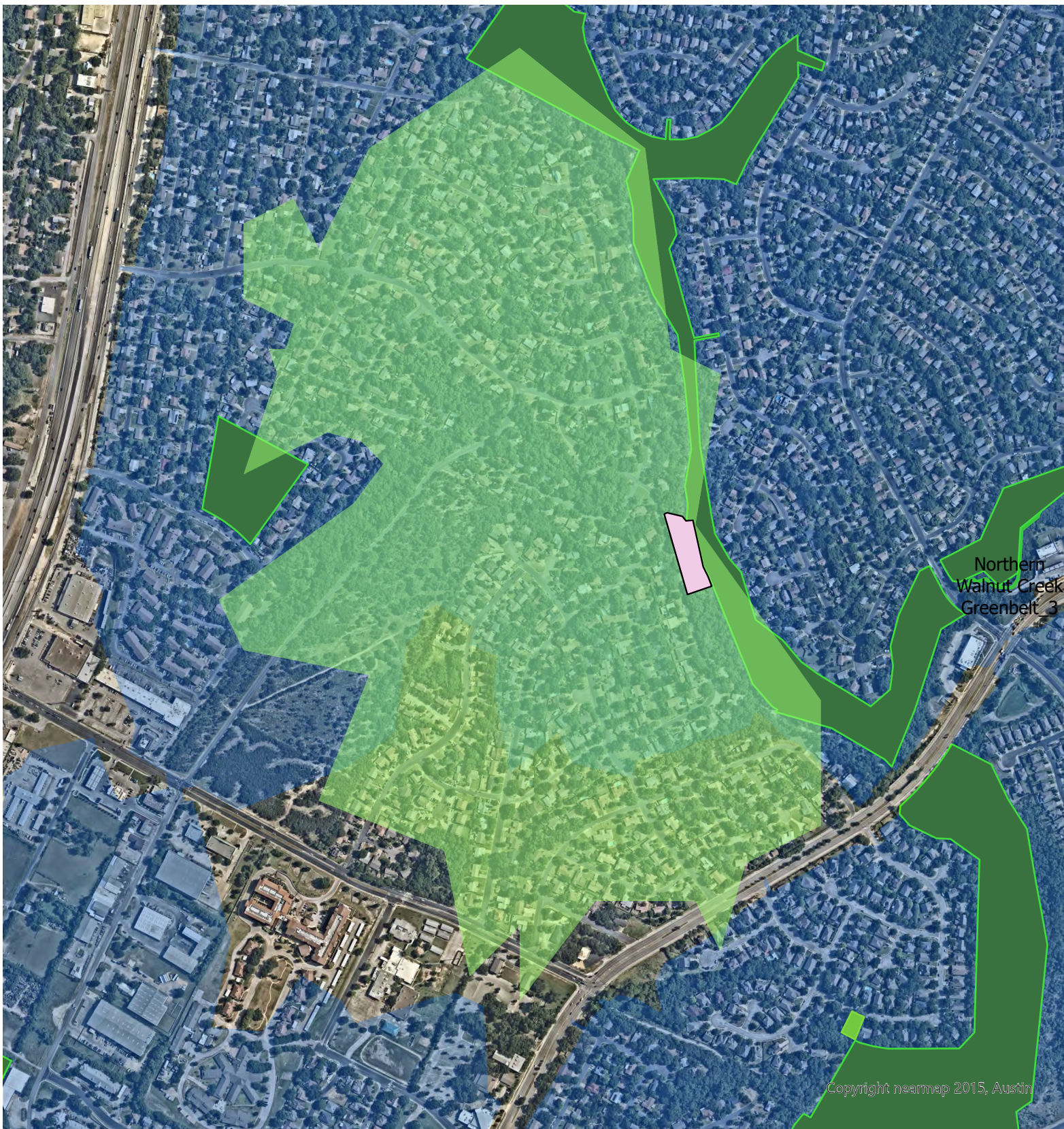
Five lots totaling approximately 1.14 acres. This transfer allows PARD to plan and construct pocket park amenities in this park deficient neighborhood. This park serves over 3,500 new residents.

Legend

-  Watershed Transfer Property
-  New Service Area
-  Existing Service Area
-  Parkland



This product is for informational purposes and may not have been prepared for or be suitable for legal, engineering, or surveying purposes. It does not represent an on-the-ground survey and represents only the approximate relative location of property boundaries. This product has been produced by the Parks and Recreation Department for the sole purpose of geographic reference. No warranty is made by the City of Austin regarding specific accuracy or completeness.

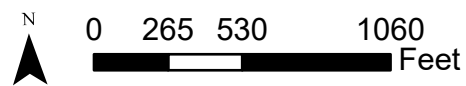


11605 February Drive - D1

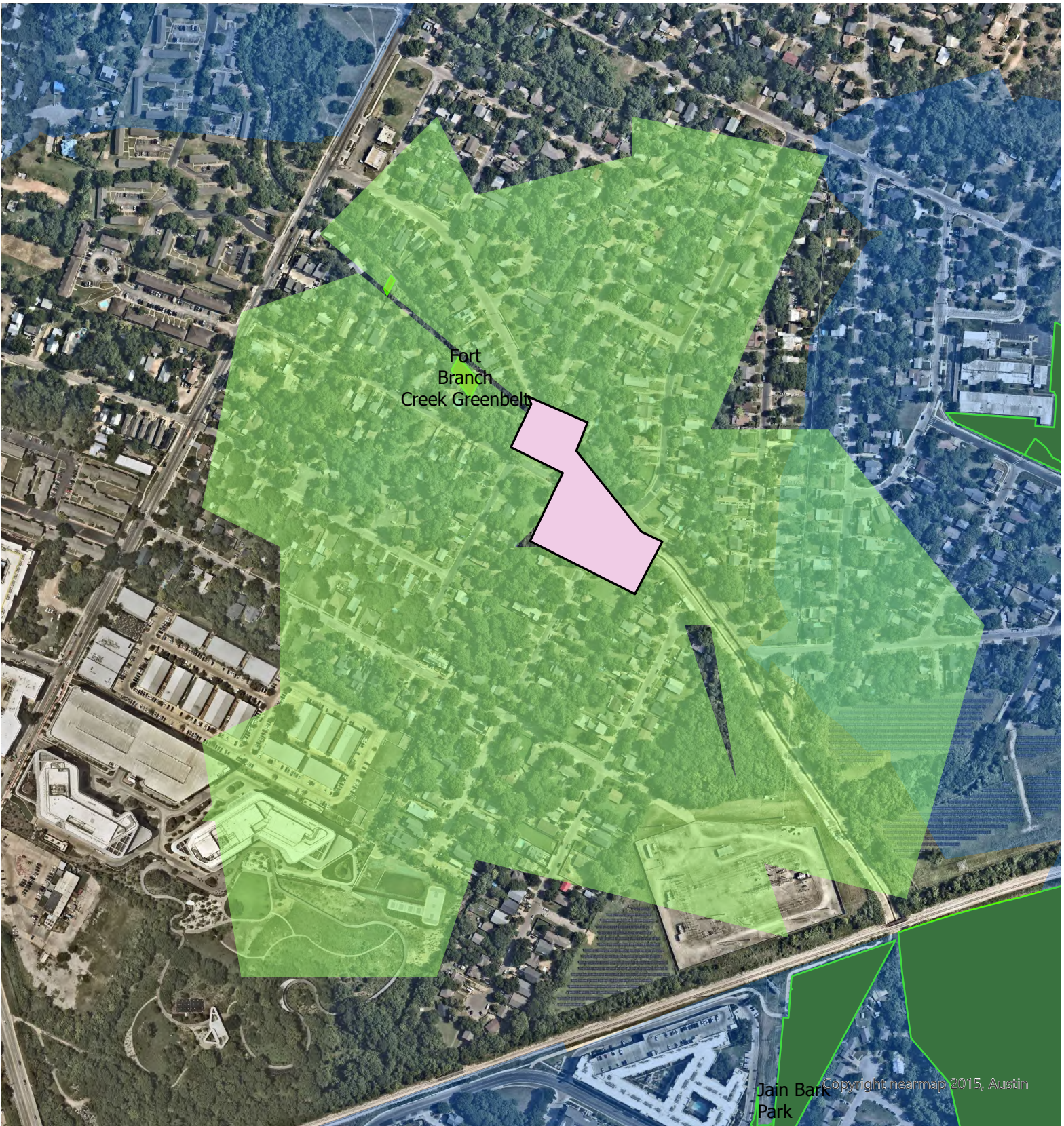
A group of 5 lots totaling approximately 1.3 acres providing expanded access into Northern Walnut Creek Greenbelt in the North Oaks neighborhood. This park serves approximately 2,400 residents.

Legend

- Watershed Transfer Property
- New Service Area
- Existing Service Area
- Parkland



This product is for informational purposes and may not have been prepared for or be suitable for legal, engineering, or surveying purposes. It does not represent an on-the-ground survey and represents only the approximate relative location of property boundaries. This product has been produced by the Parks and Recreation Department for the sole purpose of geographic reference. No warranty is made by the City of Austin regarding specific accuracy or completeness.

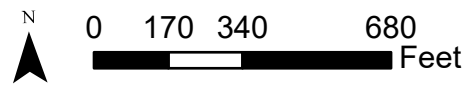


1137 Saucedo Street - D3

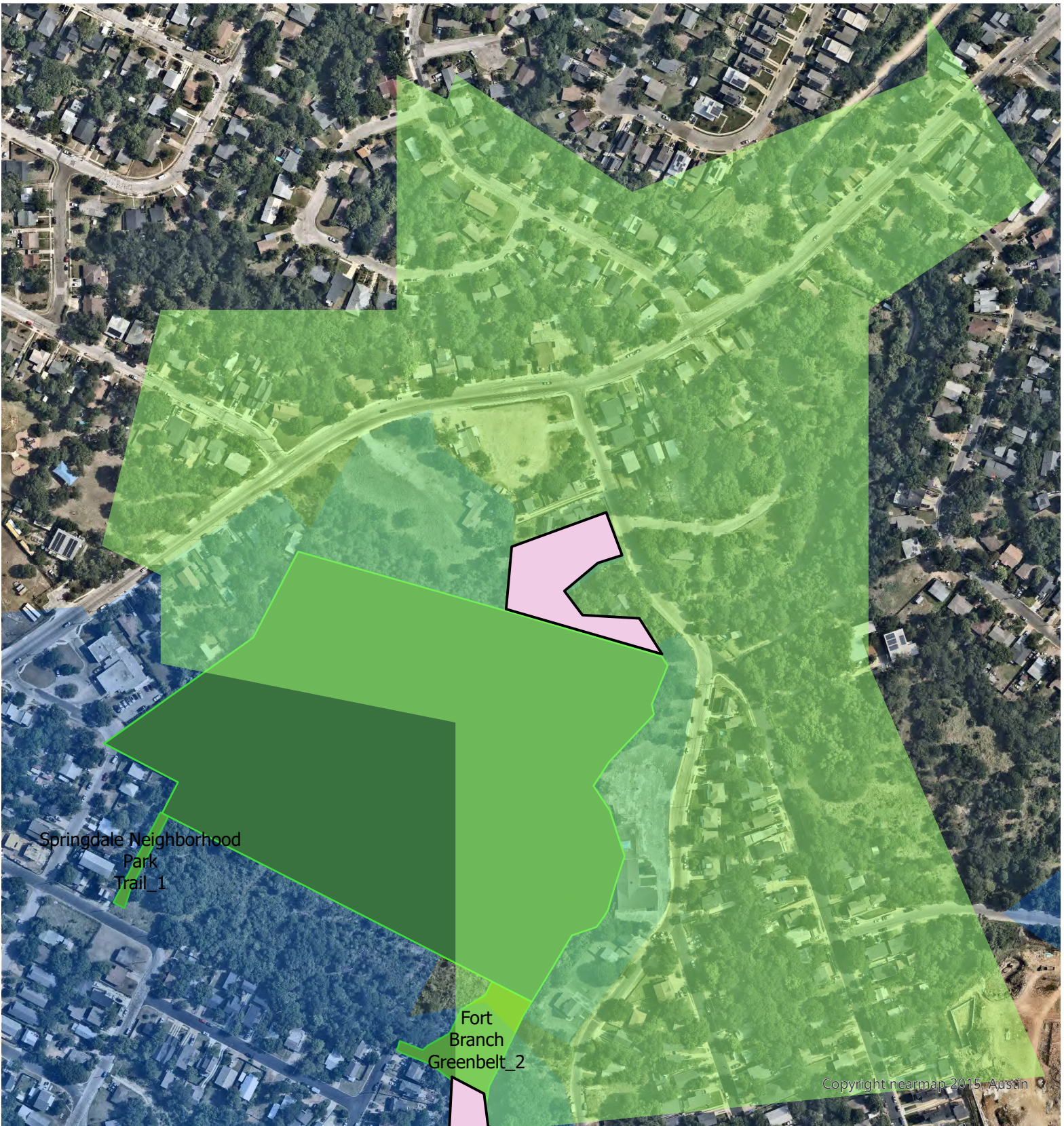
Two lots totaling approximately 3.18 acres along Tannehill Branch Greenbelt. This transfer is an important addition to the greenbelt and allows PARD to provide infill park development to this park deficient area. This park serves 1,000 additional

Legend

- Watershed Transfer Property
- New Service Area
- Existing Service Area
- Parkland



This product is for informational purposes and may not have been prepared for or be suitable for legal, engineering, or surveying purposes. It does not represent an on-the-ground survey and represents only the approximate relative location of property boundaries. This product has been produced by the Parks and Recreation Department for the sole purpose of geographic reference. No warranty is made by the City of Austin regarding specific accuracy or completeness.



1412 Fort Branch Blvd - D1

Two lots totaling approximately 1 acre. This transfer will expand access into Springdale Neighborhood Park and allow PARD to invest in trailhead improvements. This parcel serves 500 additional residents with access to the park.

Legend

- Watershed Transfer Property
- New Service Area
- Existing Service Area
- Parkland



This product is for informational purposes and may not have been prepared for or be suitable for legal, engineering, or surveying purposes. It does not represent an on-the-ground survey and represents only the approximate relative location of property boundaries. This product has been produced by the Parks and Recreation Department for the sole purpose of geographic reference. No warranty is made by the City of Austin regarding specific accuracy or completeness.

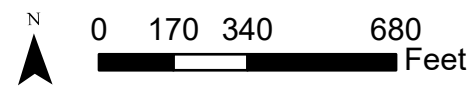


2011 E 9th Street - D1

A 0.13 acre parcel operating today as Blackshear Community Garden. Acquiring this property allows PARD to invest in this garden and include it in the existing PARD Community Garden Program. This park serves a total of 850 residents.

Legend

- Watershed Transfer Property
- New Service Area
- Existing Service Area
- Parkland



This product is for informational purposes and may not have been prepared for or be suitable for legal, engineering, or surveying purposes. It does not represent an on-the-ground survey and represents only the approximate relative location of property boundaries. This product has been produced by the Parks and Recreation Department for the sole purpose of geographic reference. No warranty is made by the City of Austin regarding specific accuracy or completeness.