

The Esperanza Community & Workforce First Model

Addressing Homelessness Through Shelter, Stability, and Opportunity



City of Austin
Public Health Committee – April 1, 2026
The Other Ones Foundation

TOOF Mission & Values

A community built on opportunity, dignity, and connection

The Other Ones Foundation creates sustainable pathways to stable housing and independence by providing reliable shelter, developing workforce skills and opportunities, and offering a supportive environment to our neighbors experiencing homelessness in Austin, TX.

Guiding Values



Engaged
Community

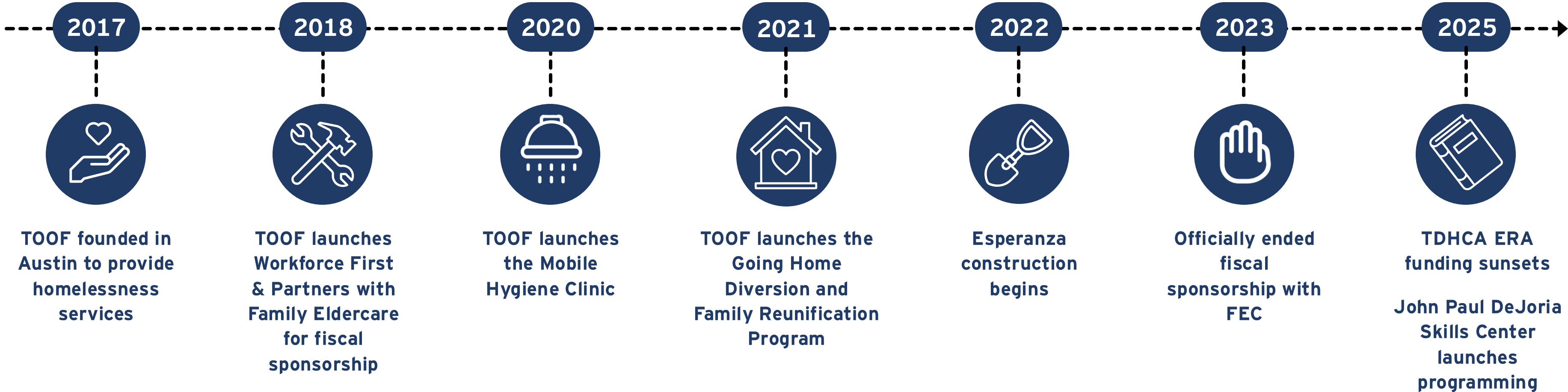
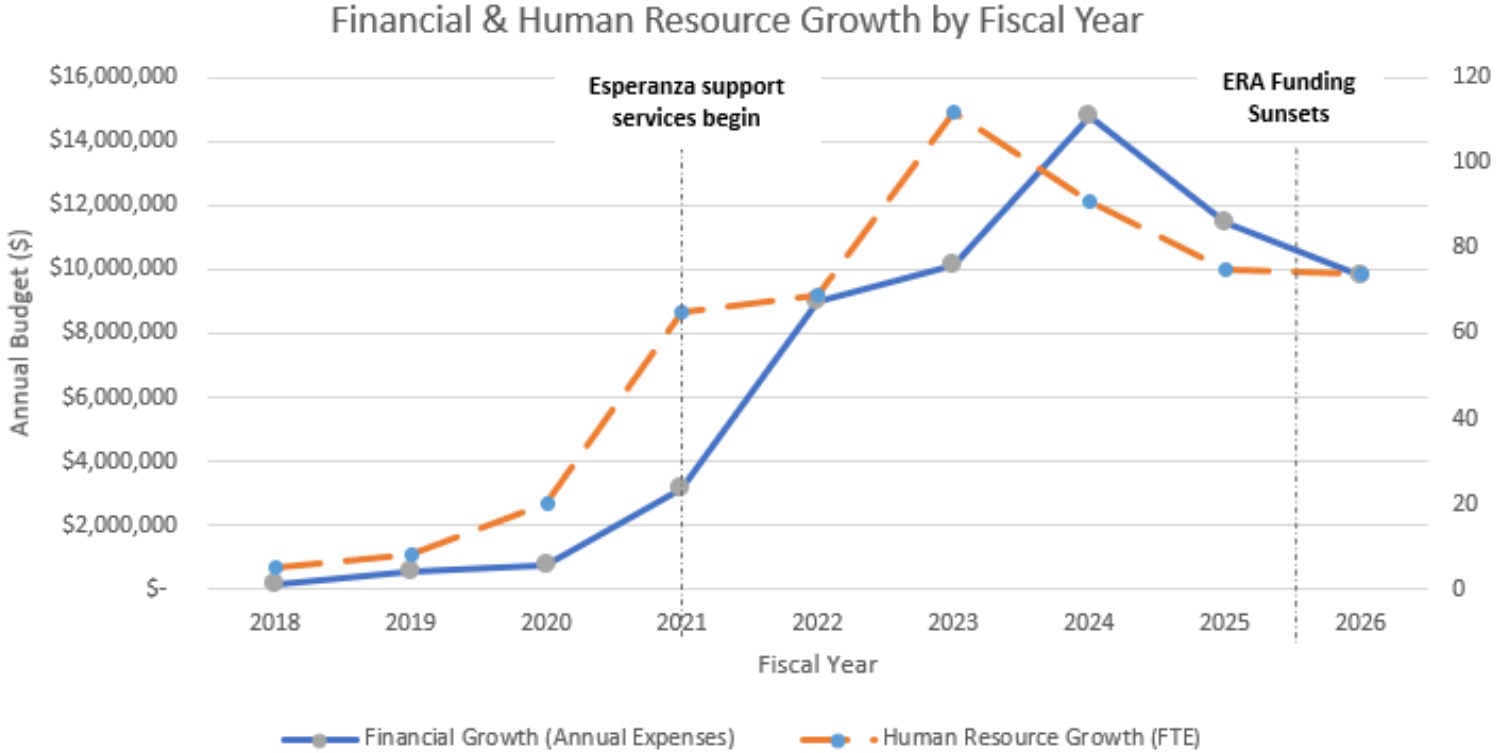
Radical
Kinship

Fierce
Authenticity

Resilience

Organizational Growth & Stability

From grassroots effort to established community partner





ESPERANZA COMMUNITY

The Esperanza Community

A transitional shelter community designed for stability



WHAT IS ESPERANZA?

The **Esperanza Community** is a transformational shelter complex in Southeast Austin that provides:

- **Individual shelter units** for privacy and security
- **Wraparound case management**
- **Work opportunities and vocational training**
- **On-site services and a strong sense of community**

It's a place where people don't just survive—they stabilize, rebuild, and move forward.

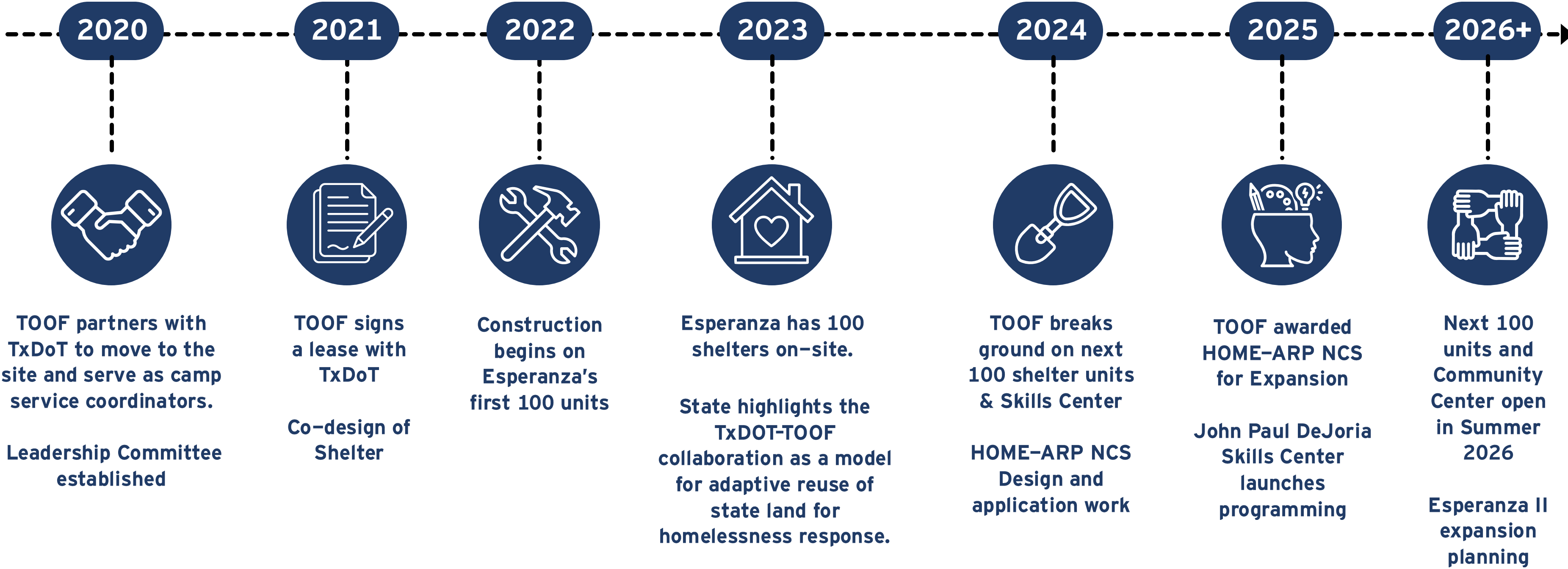
WHY IT MATTERS

Too often, people experiencing homelessness are forced to navigate a fragmented system while living in survival mode.

Esperanza provides:

- **A safe place to recover and prepare for next steps**
- **The stability needed to engage fully in services and employment**
- **A direct connection to a variety of services**

Esperanza Timeline



Expansion is Needed

Austin continues to experience significant demand for shelter and stabilization services. Esperanza II is a non-congregate shelter expansion project designed to increase capacity and services.



Expand shelter capacity to 525 units

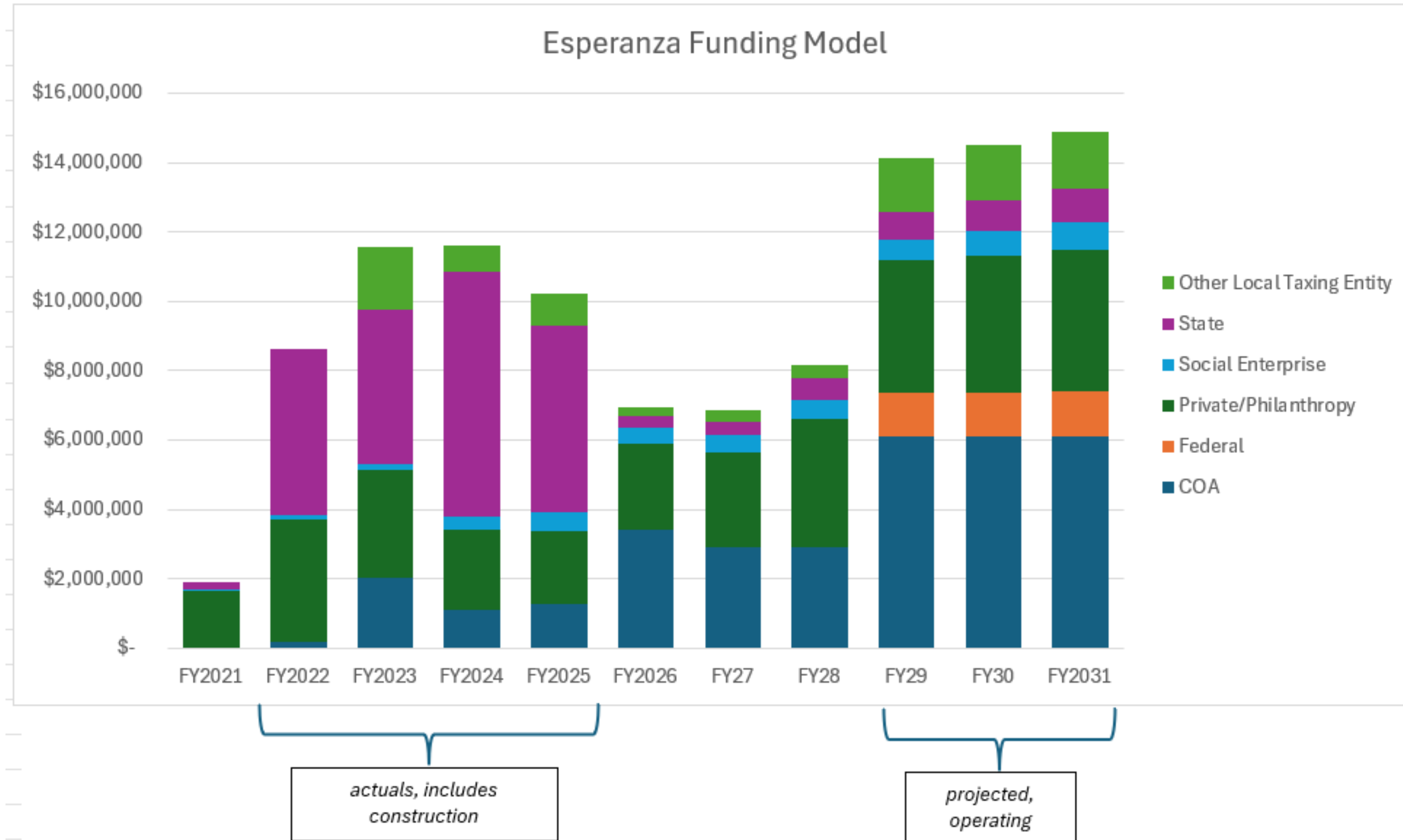


Provide additional community infrastructure

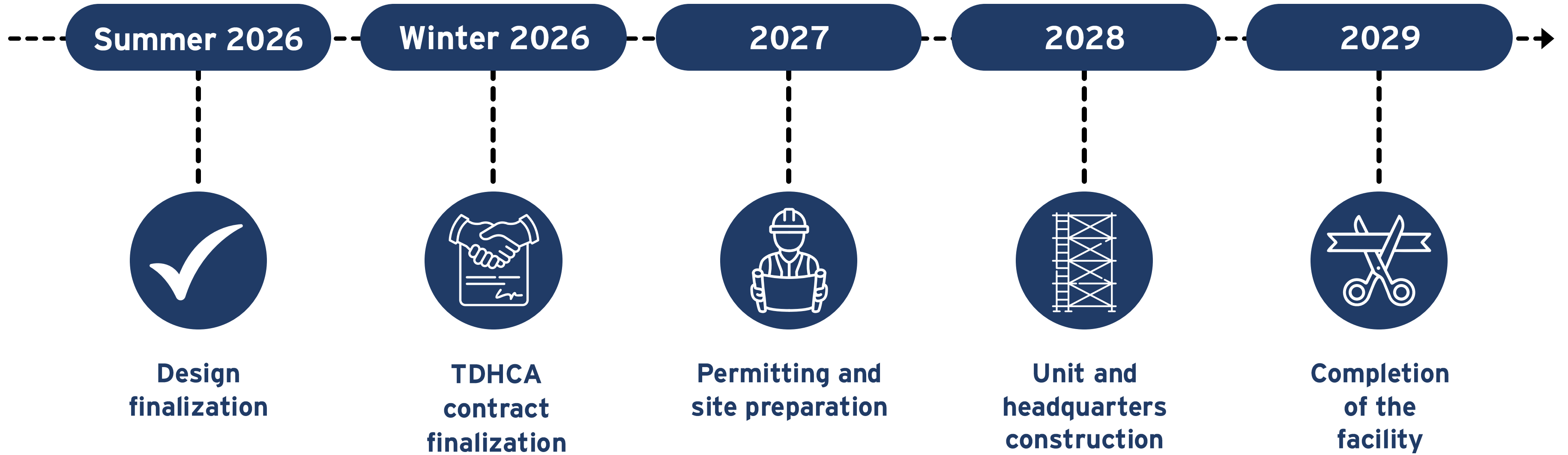
The capital project is almost completely supported through state funding via the HOME-ARP program administered by TDHCA.

Operating Model & Funding

Esperanza II will operate with a diversified funding model, maintaining balanced funding streams to ensure sustainability



Timeline & State Partnership



How Esperanza Operates

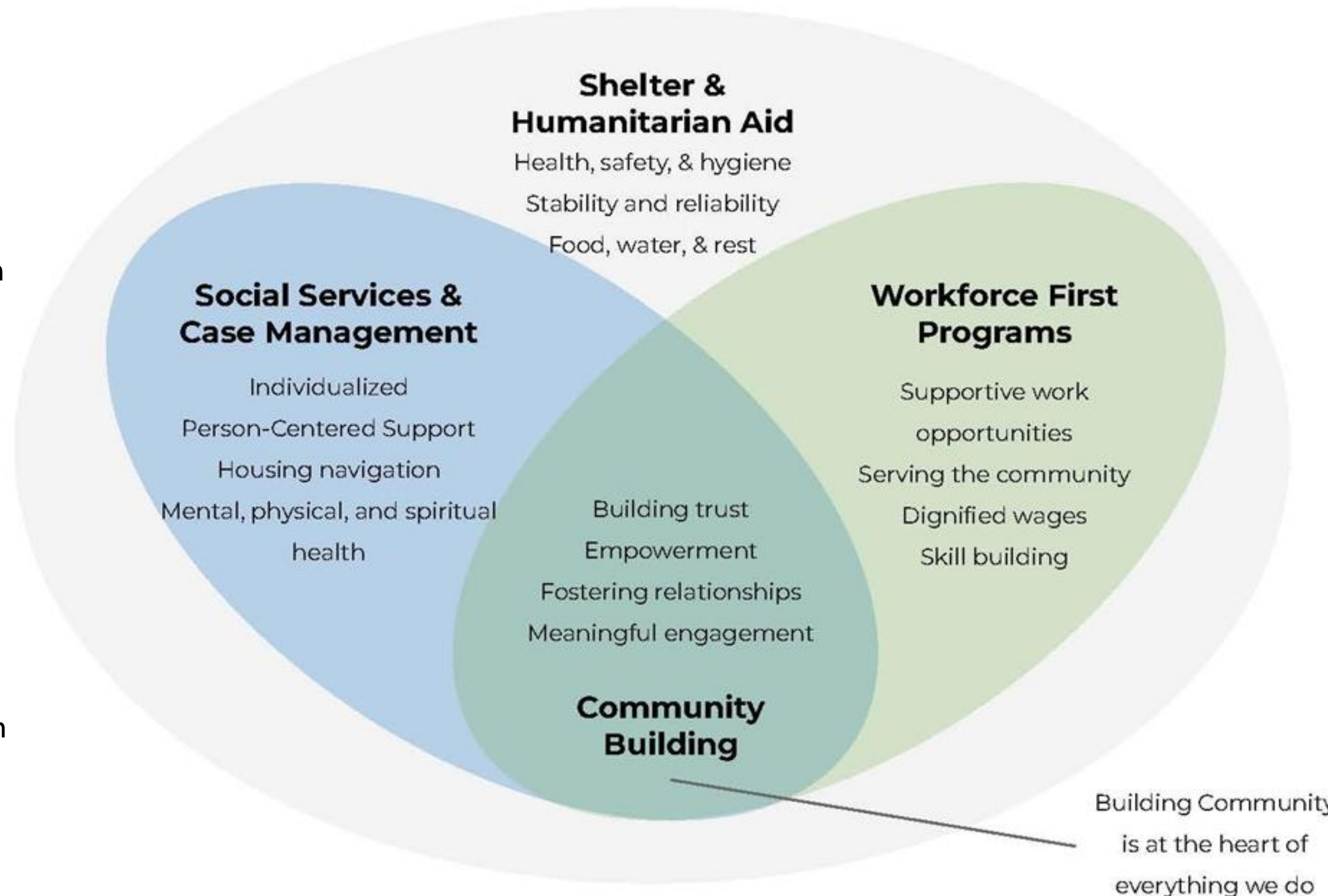
Integrated support model

Key Components

- Intake & Service Planning
- Community Engagement
- Case Management
- Trauma Informed Internal Safety and Security Team
- Facilities Team focused on education and training
- Supported Employment

Housing Pathway Partnerships

- Coordinated Entry System
- Community First! Village
- Foundation Communities



Community Building Partnerships

- Communities for Recovery
- Yellow Bike Project
- Austin Public Library
- Free Lunch ATX
- University Federal Credit Union
- Thriftish
- Half Priced Books
- Sunshine Community Gardens

Population Served in 2025



209
PEOPLE
SERVED



8 months
AVG LENGTH
OF STAY

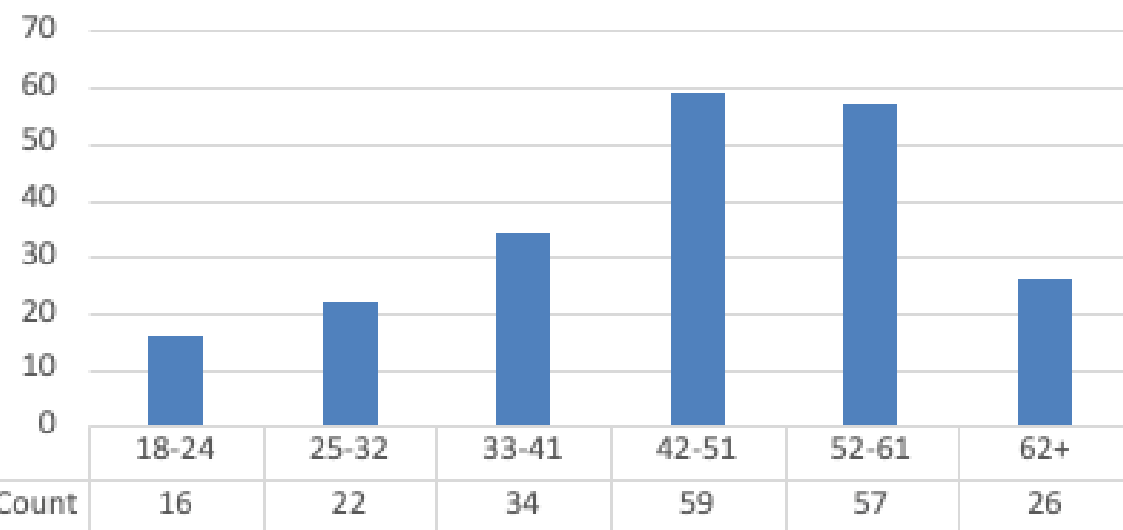


58%
POSITIVE
EXITS

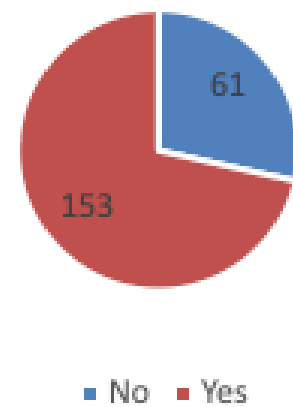
Typical barriers include:

- Physical health challenges
- Behavioral health challenges
- Lack of documentation
- Loss of employment
- Lack of social support

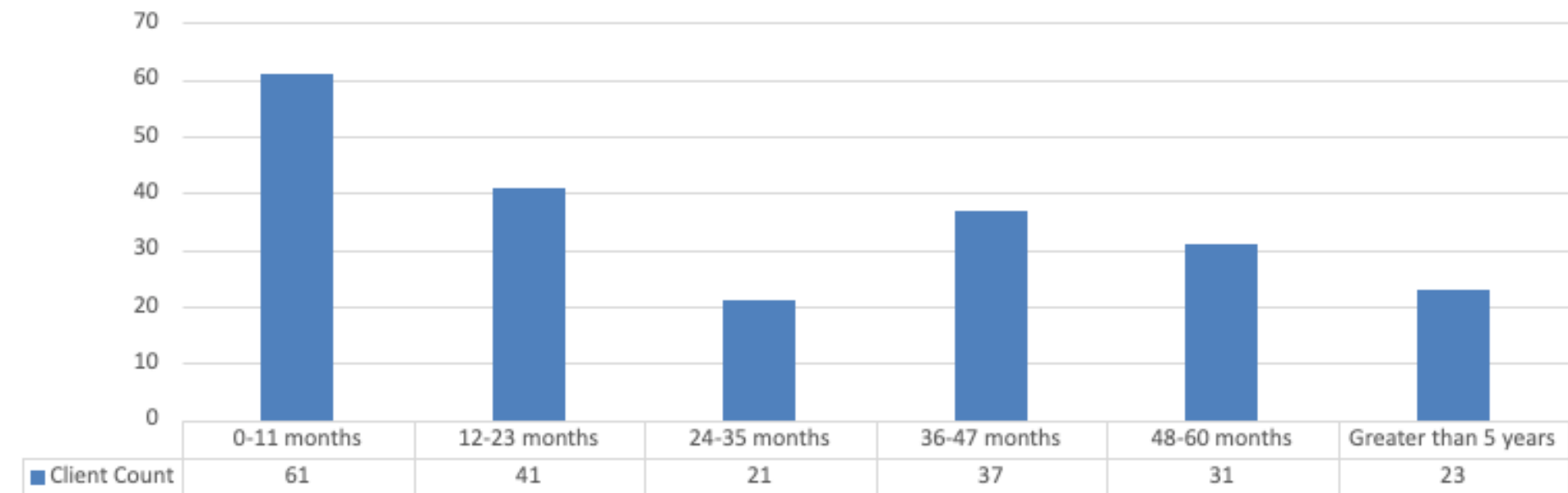
Shelter Client Age at Intake



Chronically Homeless on Intake



Client Cumulative Months of Homelessness on Intake





Wellness in Action

Holistic Approaches and Partnerships ensure that our clients regain physical and mental wellness while staying at Esperanza.

In 2025,

- 145 clients were connected to medical care.
- 122 clients were connected to psychiatric care.
- 19 clients benefited from our medication management program, receiving hands on support from a medical assistant to assist in following doctor's recommendations.

Healthcare Partners

- CommUnity Care
- Central Health
- UT CD Doyle Clinic
- Integral Care
- Mission Accomplished

Workforce Development Continuum

From first job to long-term career pathways

In 2025,

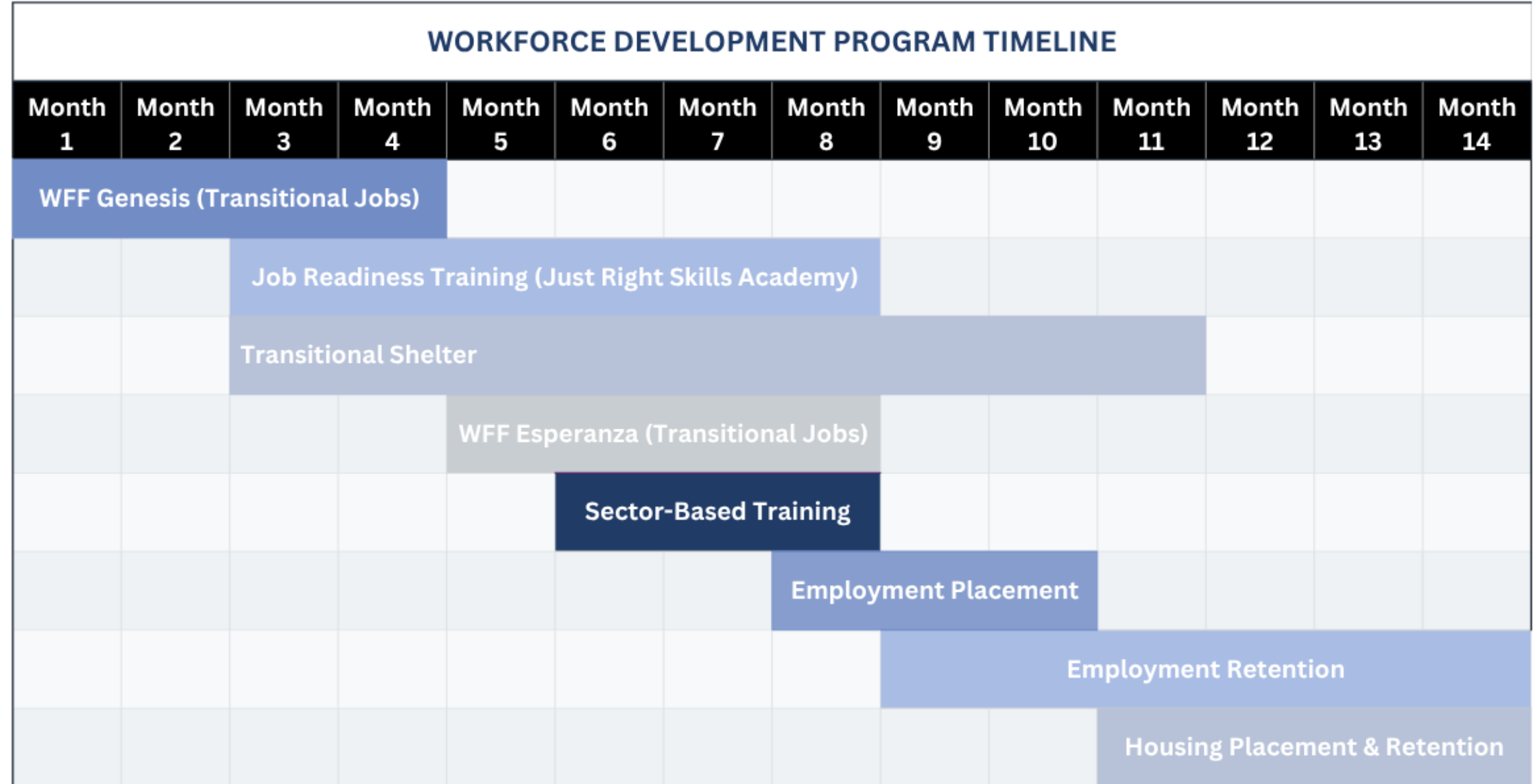
- 360 people served with workforce development services
- 50% of Esperanza residents participated in these services.

Since Skills Center Launch in Feb 2025,

- 61 clients participated in a classes at the Peace Love and Happiness Skills Center.
- 71% of participants graduated from certificate-based vocational training classes.
- Job placement rates are pending

In January,

- TOOF facilitated the “Building Pathways from Homelessness to Economic Independence” Workshop



Workforce Development Partners

- Peace, Love, and Happiness Foundation
- Austin Community College
- Workforce Solutions
- Goodwill of Central Texas
- Literacy Coalition
- Good Work Austin
- Austin Parks and Recreation
- Austin Watershed Protection



Esperanza demonstrates a model that combines:

Shelter

Workforce Development

Training

Community Support

Together, these programs create pathways to housing stability for Austinites experiencing homelessness. We appreciate the City's partnership and welcome continued collaboration.





THANK YOU

Q&A

