

ORDINANCE NO. _____

AN ORDINANCE REZONING AND CHANGING THE ZONING MAP FOR THE PROPERTY LOCATED AT 2700 AND 2702 DEL CURTO ROAD FROM FAMILY RESIDENCE (SF-3) DISTRICT TO TOWNHOUSE AND CONDOMINIUM RESIDENCE (SF-6) DISTRICT.

BE IT ORDAINED BY THE CITY COUNCIL OF THE CITY OF AUSTIN:

PART 1. The zoning map established by Section 25-2-191 of the City Code is amended to change the base district from family residence (SF-3) base district to townhouse and condominium residence (SF-6) base district on the property described in Zoning Case No. C14-2024-0022, on file at the Planning Department, as follows:

A 0.9949 acre tract of land, being out of and a part of BLOCK 8, THEODORE LOW HEIGHTS, a subdivision in Travis County, Texas, according to the map or plat thereof recorded in Volume 445, Page 582, of the Deed Records of Travis County, Texas, said 0.9949 acre tract of land being that certain called 0.986 acre tract of land conveyed by deed recorded in Volume 11762, Page 1715, of the Deed Records of Travis County, Texas, said 0.9949 acre tract of land being more particularly described by metes and bounds in **Exhibit “A”** incorporated into this ordinance (the “Property”),

locally known as 2700 and 2702 Del Curto Road in the City of Austin, Travis County, Texas, generally identified in the map attached as **Exhibit “B”**.

PART 2. This ordinance takes effect on _____, 2024.

PASSED AND APPROVED

 \mathcal{S}

§

§

_____, 2024

Kirk Watson
Mayor

APPROVED: _____ **ATTEST:** _____

Anne L. Morgan
City Attorney

Myrna Rios
City Clerk

STATE OF TEXAS §
 §
 §
 §
COUNTY OF TRAVIS §

A TRACT OR PARCEL OF LAND CONTAINING 0.9949 ACRES, (43,336 SQUARE FEET), BEING OUT OF AND A PART OF BLOCK 8, THEODORE LOW HEIGHTS, A SUBDIVISION IN TRAVIS COUNTY, TEXAS, ACCORDING TO THE MAP OR PLAT THEREOF RECORDED IN VOLUME 445, PAGE 582, OF THE DEED RECORDS OF TRAVIS COUNTY, TEXAS, SAID 0.9949 ACRE TRACT OF LAND BEING THAT CERTAIN CALLED 0.986 ACRE TRACT OF LAND AS CONVEYED TO MILES EARNEY BY INSTRUMENT RECORDED IN VOLUME 11762, PAGE 1715, OF THE DEED RECORDS OF TRAVIS COUNTY, TEXAS, AND BEING MORE PARTICULARLY DESCRIBED BY METES AND BOUNDS AS FOLLOWS: (BEARING BASIS: VOLUME 11762, PAGE 1715, OF THE DEED RECORDS OF TRAVIS COUNTY, TEXAS).

BEGINNING at a 1" iron rod found on the northwesterly right-of-way line of Del Curto Road, (right-of-way varies per Document No. 2005154591 of the Official Public Records of Travis County, Texas), for the east corner of that certain called 0.953 acre tract of land as conveyed to Steven Mark Lucas by instrument recorded in Volume 12680, Page 1855, of the Deed Records of Travis County, Texas, same being the southeasterly common corner of said Block 8 and Block 10, of said Theodore Low Heights, same being the south corner and the POINT OF BEGINNING of the herein described tract;

Thence, N 60°14'00" W, along the common line of said 0.953 Acre Tract, a distance of 202.51 feet to a point for corner;

Thence, S 62°23'00" W, along the common line of said 0.953 Acre Tract, a distance of 28.40 feet to a point for corner;

Thence, N 59°39'00" W, along the common line of said 0.953 Acre Tract, a distance of 383.00 feet, (Call 374.03 feet), to a capped, (Precision Surveyors), iron rod set on the common line of that certain called 2.24 acre tract of land as conveyed to Ray Turner, Et Al, Trustees, Faith Methodist Church, by instrument recorded in Volume 1272, Page 89, of the Deed Records of Travis County, Texas, for the west corner of the herein described tract;

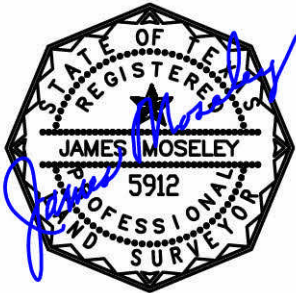
Thence, N 32°04'00" E, along the common line of said 2.24 Acre Tract, a distance of 71.00 feet, (Call 71.13 feet), to a capped, (Precision Surveyors), iron rod set for a corner of Del Curto Condominiums, as recorded by instrument in Document No. 2005154591 of the Official Public Records of Harris County, Texas, same being the north corner of the herein described tract;

Thence, S 59°42'00" E, along the common line of said Del Curto Condominiums, a distance of 410.60 feet to a point for corner;

Thence, S 60°40'00" E, along the common line of said Del Curto Condominiums, a distance of 67.20 feet to a point for corner;

Thence, S 59°45'00" E, along the common line of said Del Curto Condominiums, a distance of 133.53 feet to a capped, (Precision Surveyors), iron rod set on the northwesterly right-of-way line of Del Curto Road for the south corner of said Del Curto Condominiums, same being the east corner of the herein described tract;

Thence, S 30°00'00" W, along the northwesterly right-of-way line of Del Curto Road, a distance of 69.34 feet to the POINT OF BEGINNING and containing 0.9949 acres or 43,336 square feet of land, more or less.



James E. Moseley
Registered Professional Land Surveyor,
No. 5912
Job No. SA2023-01992
October 5, 2023

See Drawing Attached

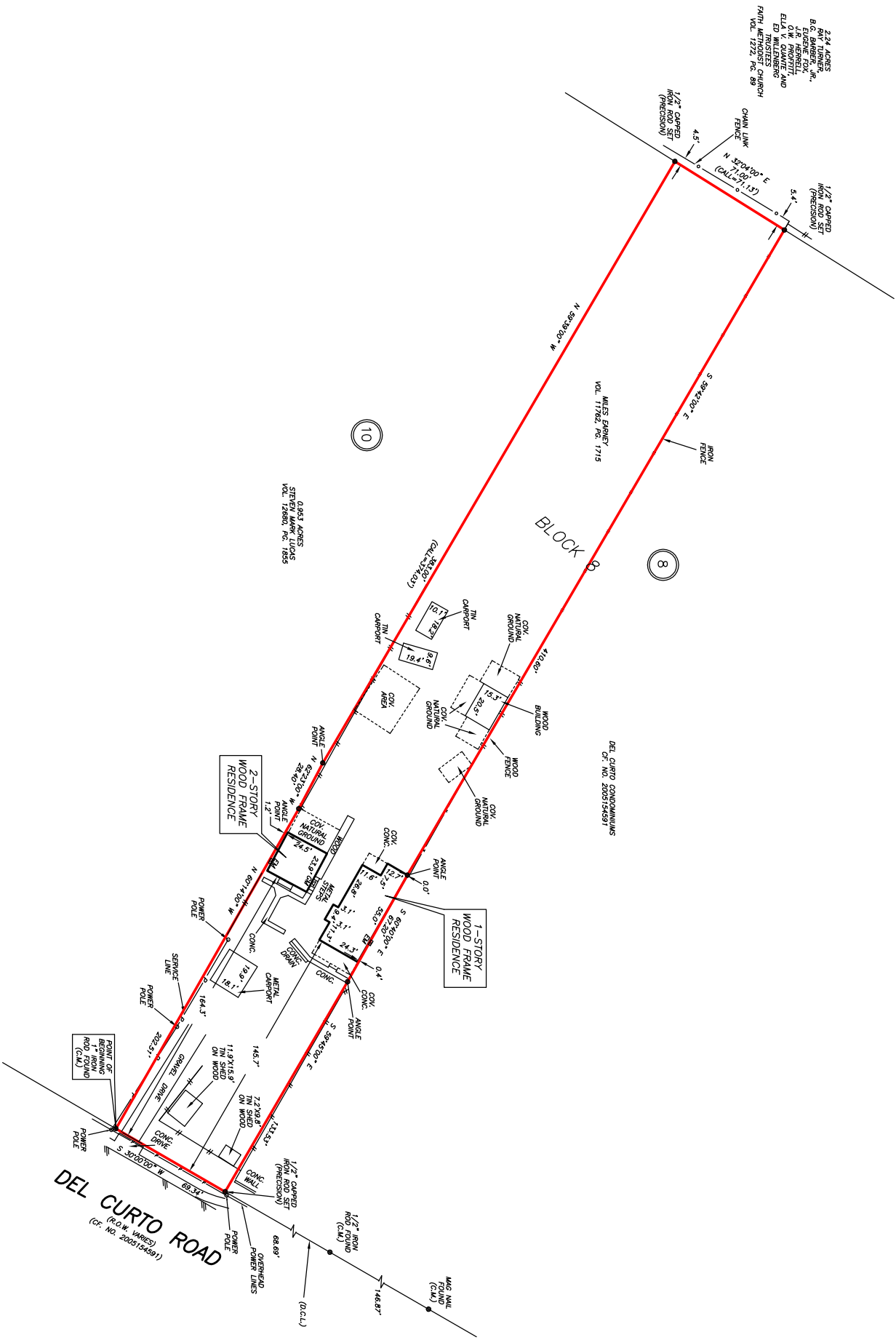
GF NO. 2336265-1LF MIDTOWN TITLE
ADDRESS: 2700 DEL CURTO ROAD
AUSTIN, TEXAS 78704
BORROWER: MILES EARNLEY

THIS PROPERTY DOES NOT LIE WITHIN THE
100 YEAR FLOOD PLAIN AS ESTABLISHED
BY THE U.S. DEPT. OF HOUSING & URBAN
DEVELOPMENT.
COMMUNITY/PANEL NO. 48453C 0585 H
MAP REVISION: 09/26/2008
ZONE X

BASED ONLY ON VISUAL EXAMINATION OF MAPS
INACCURACIES OF FEMA MAPS PREVENT EXACT
DETERMINATION WITHOUT DETAILED FIELD STUDY

A SUBSURFACE INVESTIGATION
WAS BEYOND THE SCOPE OF THIS SURVEY

NOTE: TEXAS POWER AND LIGHT COMPANY EASEMENT PER
VOL. 454, PG. 372; VOL. 454, PG. 374; VOL. 570, PG. 347;
VOL. 570, PG. 353; VOL. 622, PG. 349 AND VOL. 629, PG. 47.

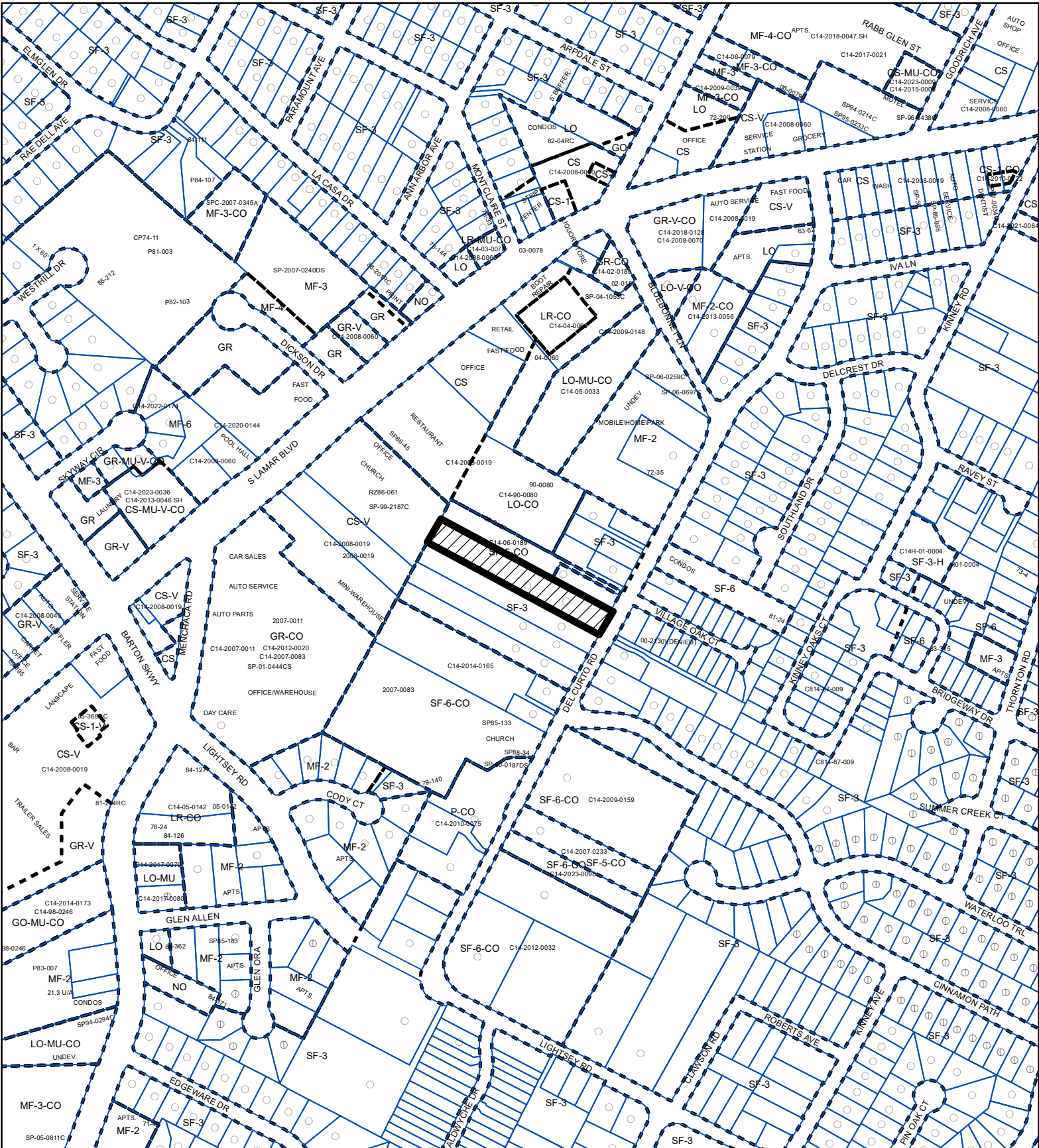


0.9949 ACRES
OUT OF BLOCK 8
THEODORE LOW HEIGHTS
A SUBDIVISION IN TRAVIS COUNTY, TEXAS
ACCORDING TO THE MAP OR PLAT THEREOF RECORDED
IN VOLUME 445, PAGE 582 OF THE DEED RECORDS
(SEE ATTACHED METES AND BOUNDS DESCRIPTION)

DRAWN BY: RE



PRECISION SURVEYORS
PROFESSIONAL LAND SURVEYORS
1-800-LANDSURVEY
WWW.PRECISIONSURVEYORS.COM
281-496-1586
281-496-1587
281-496-1588
281-496-1589
281-496-1590
281-496-1591
281-496-1592
281-496-1593
281-496-1594
281-496-1595
281-496-1596
281-496-1597
281-496-1598
281-496-1599
281-496-1600
281-496-1601
281-496-1602
281-496-1603
281-496-1604
281-496-1605
281-496-1606
281-496-1607
281-496-1608
281-496-1609
281-496-1610
281-496-1611
281-496-1612
281-496-1613
281-496-1614
281-496-1615
281-496-1616
281-496-1617
281-496-1618
281-496-1619
281-496-1620
281-496-1621
281-496-1622
281-496-1623
281-496-1624
281-496-1625
281-496-1626
281-496-1627
281-496-1628
281-496-1629
281-496-1630
281-496-1631
281-496-1632
281-496-1633
281-496-1634
281-496-1635
281-496-1636
281-496-1637
281-496-1638
281-496-1639
281-496-1640
281-496-1641
281-496-1642
281-496-1643
281-496-1644
281-496-1645
281-496-1646
281-496-1647
281-496-1648
281-496-1649
281-496-1650
281-496-1651
281-496-1652
281-496-1653
281-496-1654
281-496-1655
281-496-1656
281-496-1657
281-496-1658
281-496-1659
281-496-1660
281-496-1661
281-496-1662
281-496-1663
281-496-1664
281-496-1665
281-496-1666
281-496-1667
281-496-1668
281-496-1669
281-496-1670
281-496-1671
281-496-1672
281-496-1673
281-496-1674
281-496-1675
281-496-1676
281-496-1677
281-496-1678
281-496-1679
281-496-1680
281-496-1681
281-496-1682
281-496-1683
281-496-1684
281-496-1685
281-496-1686
281-496-1687
281-496-1688
281-496-1689
281-496-1690
281-496-1691
281-496-1692
281-496-1693
281-496-1694
281-496-1695
281-496-1696
281-496-1697
281-496-1698
281-496-1699
281-496-1700
281-496-1701
281-496-1702
281-496-1703
281-496-1704
281-496-1705
281-496-1706
281-496-1707
281-496-1708
281-496-1709
281-496-1710
281-496-1711
281-496-1712
281-496-1713
281-496-1714
281-496-1715
281-496-1716
281-496-1717
281-496-1718
281-496-1719
281-496-1720
281-496-1721
281-496-1722
281-496-1723
281-496-1724
281-496-1725
281-496-1726
281-496-1727
281-496-1728
281-496-1729
281-496-1730
281-496-1731
281-496-1732
281-496-1733
281-496-1734
281-496-1735
281-496-1736
281-496-1737
281-496-1738
281-496-1739
281-496-1740
281-496-1741
281-496-1742
281-496-1743
281-496-1744
281-496-1745
281-496-1746
281-496-1747
281-496-1748
281-496-1749
281-496-1750
281-496-1751
281-496-1752
281-496-1753
281-496-1754
281-496-1755
281-496-1756
281-496-1757
281-496-1758
281-496-1759
281-496-1760
281-496-1761
281-496-1762
281-496-1763
281-496-1764
281-496-1765
281-496-1766
281-496-1767
281-496-1768
281-496-1769
281-496-1770
281-496-1771
281-496-1772
281-496-1773
281-496-1774
281-496-1775
281-496-1776
281-496-1777
281-496-1778
281-496-1779
281-496-1780
281-496-1781
281-496-1782
281-496-1783
281-496-1784
281-496-1785
281-496-1786
281-496-1787
281-496-1788
281-496-1789
281-496-1790
281-496-1791
281-496-1792
281-496-1793
281-496-1794
281-496-1795
281-496-1796
281-496-1797
281-496-1798
281-496-1799
281-496-1800
281-496-1801
281-496-1802
281-496-1803
281-496-1804
281-496-1805
281-496-1806
281-496-1807
281-496-1808
281-496-1809
281-496-1810
281-496-1811
281-496-1812
281-496-1813
281-496-1814
281-496-1815
281-496-1816
281-496-1817
281-496-1818
281-496-1819
281-496-1820
281-496-1821
281-496-1822
281-496-1823
281-496-1824
281-496-1825
281-496-1826
281-496-1827
281-496-1828
281-496-1829
281-496-1830
281-496-1831
281-496-1832
281-496-1833
281-496-1834
281-496-1835
281-496-1836
281-496-1837
281-496-1838
281-496-1839
281-496-1840
281-496-1841
281-496-1842
281-496-1843
281-496-1844
281-496-1845
281-496-1846
281-496-1847
281-496-1848
281-496-1849
281-496-1850
281-496-1851
281-496-1852
281-496-1853
281-496-1854
281-496-1855
281-496-1856
281-496-1857
281-496-1858
281-496-1859
281-496-1860
281-496-1861
281-496-1862
281-496-1863
281-496-1864
281-496-1865
281-496-1866
281-496-1867
281-496-1868
281-496-1869
281-496-1870
281-496-1871
281-496-1872
281-496-1873
281-496-1874
281-496-1875
281-496-1876
281-496-1877
281-496-1878
281-496-1879
281-496-1880
281-496-1881
281-496-1882
281-496-1883
281-496-1884
281-496-1885
281-496-1886
281-496-1887
281-496-1888
281-496-1889
281-496-1890
281-496-1891
281-496-1892
281-496-1893
281-496-1894
281-496-1895
281-496-1896
281-496-1897
281-496-1898
281-496-1899
281-496-1900
281-496-1901
281-496-1902
281-496-1903
281-496-1904
281-496-1905
281-496-1906
281-496-1907
281-496-1908
281-496-1909
281-496-1910
281-496-1911
281-496-1912
281-496-1913
281-496-1914
281-496-1915
281-496-1916
281-496-1917
281-496-1918
281-496-1919
281-496-1920
281-496-1921
281-496-1922
281-496-1923
281-496-1924
281-496-1925
281-496-1926
281-496-1927
281-496-1928
281-496-1929
281-496-1930
281-496-1931
281-496-1932
281-496-1933
281-496-1934
281-496-1935
281-496-1936
281-496-1937
281-496-1938
281-496-1939
281-496-1940
281-496-1941
281-496-1942
281-496-1943
281-496-1944
281-496-1945
281-496-1946
281-496-1947
281-496-1948
281-496-1949
281-496-1950
281-496-1951
281-496-1952
281-496-1953
281-496-1954
281-496-1955
281-496-1956
281-496-1957
281-496-1958
281-496-1959
281-496-1960
281-496-1961
281-496-1962
281-496-1963
281-496-1964
281-496-1965
281-496-1966
281-496-1967
281-496-1968
281-496-1969
281-496-1970
281-496-1971
281-496-1972
281-496-1973
281-496-1974
281-496-1975
281-496-1976
281-496-1977
281-496-1978
281-496-1979
281-496-1980
281-496-1981
281-496-1982
281-496-1983
281-496-1984
281-496-1985
281-496-1986
281-496-1987
281-496-1988
281-496-1989
281-496-1990
281-496-1991
281-496-1992
281-496-1993
281-496-1994
281-496-1995
281-496-1996
281-496-1997
281-496-1998
281-496-1999
281-496-2000
281-496-2001
281-496-2002
281-496-2003
281-496-2004
281-496-2005
281-496-2006
281-496-2007
281-496-2008
281-496-2009
281-496-2010
281-496-2011
281-496-2012
281-496-2013
281-496-2014
281-496-2015
281-496-2016
281-496-2017
281-496-2018
281-496-2019
281-496-2020
281-496-2021
281-496-2022
281-496-2023
281-496-2024
281-496-2025
281-496-2026
281-496-2027
281-496-2028
281-496-2029
281-496-2030
281-496-2031
281-496-2032
281-496-2033
281-496-2034
281-496-2035
281-496-2036
281-496-2037
281-496-2038
281-496-2039
281-496-2040
281-496-2041
281-496-2042
281-496-2043
281-496-2044
281-496-2045
281-496-2046
281-496-2047
281-496-2048
281-496-2049
281-496-2050
281-496-2051
281-496-2052
281-496-2053
281-496-2054
281-496-2055
281-496-2056
281-496-2057
281-496-2058
281-496-2059
281-496-2060
281-496-2061
281-496-2062
281-496-2063
281-496-2064
281-496-2065
281-496-2066
281-496-2067
281-496-2068
281-496-2069
281-496-2070
281-496-2071
281-496-2072
281-496-2073
281-496-2074
281-496-2075
281-496-2076
281-496-2077
281-496-2078
281-496-2079
281-496-2080
281-496-2081
281-496-2082
281-496-2083
281-496-2084
281-496-2085
281-496-2086
281-496-2087
281-496-2088
281-496-2089
281-496-2090
281-496-2091
281-496-2092
281-496-2093
281-496-2094
281-496-2095
281-496-2096
281-496-2097
281-496-2098
281-496-2099
281-496-2100
281-496-2101
281-496-2102
281-496-2103
281-496-2104
281-496-2105
281-496-2106
281-496-2107
281-496-2108
281-496-2109
281-496-2110
281-496-2111
281-496-2112
281-496-2113
281-496-2114
281-496-2115
281-496-2116
281-496-2117
281-496-2118
281-496-2119
281-496-2120
281-496-2121
281-496-2122
281-496-2123
281-496-2124
281-496-2125
281-496-2126
281-496-2127
281-496-2128
281-496-2129
281-496-2130
281-496-2131
281-496-2132
281-496-2133
281-496-2134
281-496-2135
281-496-2136
281-496-2137
281-496-2138
281-496-2139
281-496-2140
281-496-2141
281-496-2142
281-496-2143
281-496-2144
281-496-2145
281-496-2146
281-496-2147
281-496-2148
281-496-2149
281-496-2150
281-496-2151
281-496-2152
281-496-2153
281-496-2154
281-496-2155
281-496-2156
281-496-2157
281-496-2158
281-496-2159
281-496-2160
281-496-2161
281-496-2162
281-496-2163
281-496-2164
281-496-2165
281-496-2166
281-496-2167
281-496-2168
281-496-2169
281-496-2170
281-496-2171
281-496-2172
281-496-2173
281-496-2174
281-496-2175
281-496-2176
281-496-2177
281-496-2178
281-496-2179
281-496-2180
281-496-2181
281-496-2182
281-496-2183
281-496-2184
281-496-2185
281-496-2186
281-496-2187
281-496-2188
281-496-2189
281-496-2190
281-496-2191
281-496-2192
281-496-2193
281-496-2194
281-496-2195
281-496-2196
281-496-2197
281-496-2198
281-496-2199
281-496-2200
281-496-2201
281-496-2202
281-496-2203
281-496-2204
281-496-2205
281-496-2206
281-496-2207
281-496-2208
281-496-2209
281-496-2210
281-496-2211
281-496-2212
281-496-2213
281-496-2214
281-496-2215
281-496-2216
281-496-2217
281-496-2218
281-496-2219
281-496-2220
281-496-2221
281-496-2222
281-496-2223
281-496-2224
281-496-2225
281-496-2226
281-496-2227
281-496-2228
281-496-2229
281-496-2230
281-496-2231
281-496-2232
281-496-2233
281-496-2234
281-496-2235
281-496-2236
281-496-2237
281-496-2238
281-496-2239
281-496-2240
281-496-2241
281-496-2242
281-496-2243
281-496-2244
281-496-2245
281-496-2246
281-496-2247
281-496-2248
281-496-2249
281-496-2250
281-496-2251
281-496-2252
281-496-2253
281-496-2254
281-496-2255
281-496-2256
281-496-2257
281-496-2258
281-496-2259
281-496-2260
281-496-2261
281-496-2262
281-496-2263
281-496-2264
281-496-2265
281-496-2266
281-496-2267
281-496-2268
281-496-2269
281-496-2270
281-496-2271
281-496-2272
281-496-2273
281-496-2274
281-496-2275
281-496-2276
281-496-2277
281-496-2278
281-496-2279
281-496-2280
281-496-2281
281-496-2282
281-496-2283
281-496-2284
281-496-2285
281-496-2286
281-496-2287
281-496-2288
281-496-2289
281-496-2290
281-496-2291
281-496-2292
281-496-2293
281-496-2294
281-496-2295
281-496-2296
281-496-2297
281-496-2298
281-496-2299
281-496-2300
281-496-2301
281-496-2302
281-496-2303
281-496-2304
281-496-2305
281-496-2306
281-496-2307
281-496-2308
281-496-2309
281-496-2310
281-496-2311
281-496-2312
281-496-2313
281-496-2314
281-496-2315
281-496-2316
281-496-2317
281-496-2318
281-496-2319
281-496-2320
281-496-2321
281-496-2322
281-496-2323
281-496-2324
281-496-2325
281-496-2326
281-496-2327
281-496-2328
281-496-2329
281-496-2330
281-496-2331
281-496-2332
281-496-2333
281-496-2334
281-496-2335
281-496-2336
281-496-2337
281-496-2338
281-496-2339
281-496-2340
281-496-2341
281-496-2342
281-496-2343
281-496-2344
281-496-2345
281-496-2346
281-496-2347
281-496-2348
281-496-2349
281-496-2350
281-496-2351
281-496-2352
281-496-2353
281-496-2354
281-496-2355
281-496-2356
281-496-2357
281-496-2358
281-496-2359
281-496-2360
281-496-2361
281-496-2362
281-496-2363
281-496-2364
281-496-2365
281-496-2366
281-496-2367
281-496-2368
281-496-2369
281-496-2370
281-496-2371
281-496-2372
281-496-2373
281-496-2374
281-496-2375
281-496-2376
281-496-2377
281-496-2378
281-496-2379
281-496-2380
281-496-2381
281-496-2382
281-496-2383
281-496-2384
281-496-2385
281-496-2386
281-496-2387
281-496-2388
281-496-2389
281-496-2390
281-496-2391
281-496-2392
281-496-2393
281-496-2394
281-496-2395
281-496-2396
281-496-2397
281-496-2398
281-



ZONING CASE#: C14-2024-0022



Created: 2/29/2024