


Easements Proposed for Acquisition at 1524 S. I35, Austin, TX 78704



FINANCIAL SERVICES DEPARTMENT

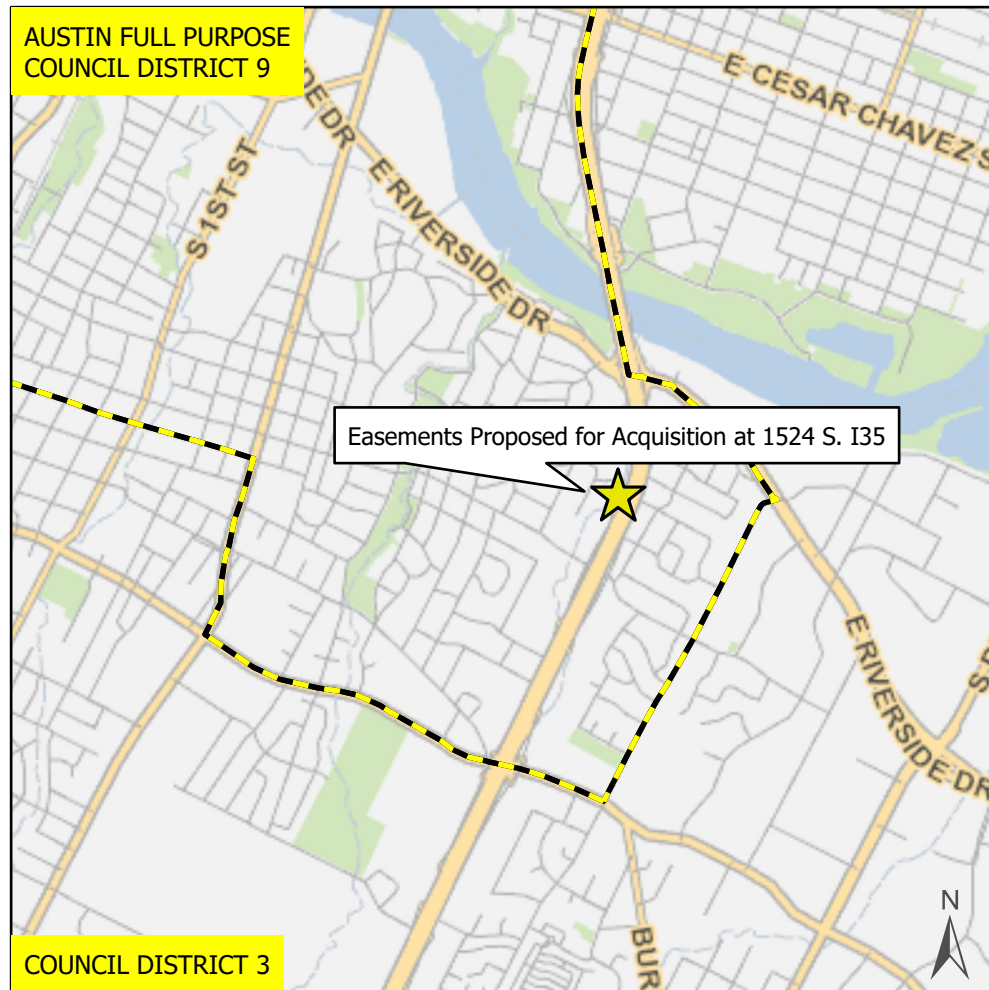
 City Council Districts

Nearmap US Vertical Imagery by ESRI

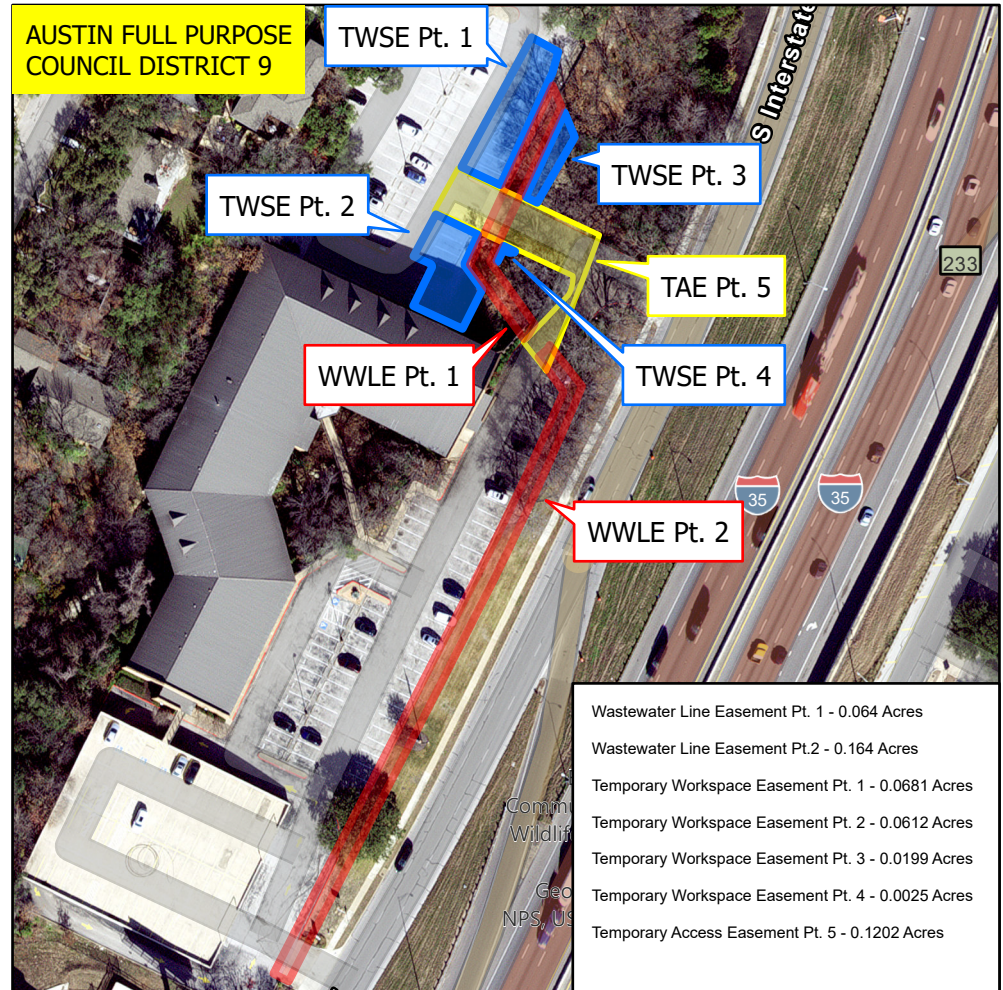
This product is for informational purposes and may not have been prepared for or be suitable for legal, engineering, or surveying purposes. It does not represent an on-the-ground survey and represents only the approximate relative location of property boundaries.

This product has been produced by the Financial Services Department for the sole purpose of geographic reference. No warranty is made by the City of Austin regarding specific accuracy or completeness.

Produced by Tomas Fernandez - June 5th, 2025



0 1,000 2,000 3,000
Feet



Wastewater Line Easement Pt. 1 - 0.064 Acres
Wastewater Line Easement Pt.2 - 0.164 Acres
Temporary Workspace Easement Pt. 1 - 0.0681 Acres
Temporary Workspace Easement Pt. 2 - 0.0612 Acres
Temporary Workspace Easement Pt. 3 - 0.0199 Acres
Temporary Workspace Easement Pt. 4 - 0.0025 Acres
Temporary Access Easement Pt. 5 - 0.1202 Acres

0 75 150
Feet