

# AUSTIN WATER GREATER WALNUT CENTRALIZED ODOR CONTROL FACILITY PROJECT

Chapter 26 Application for AW Infrastructure within  
Parkland at Balcones District Park

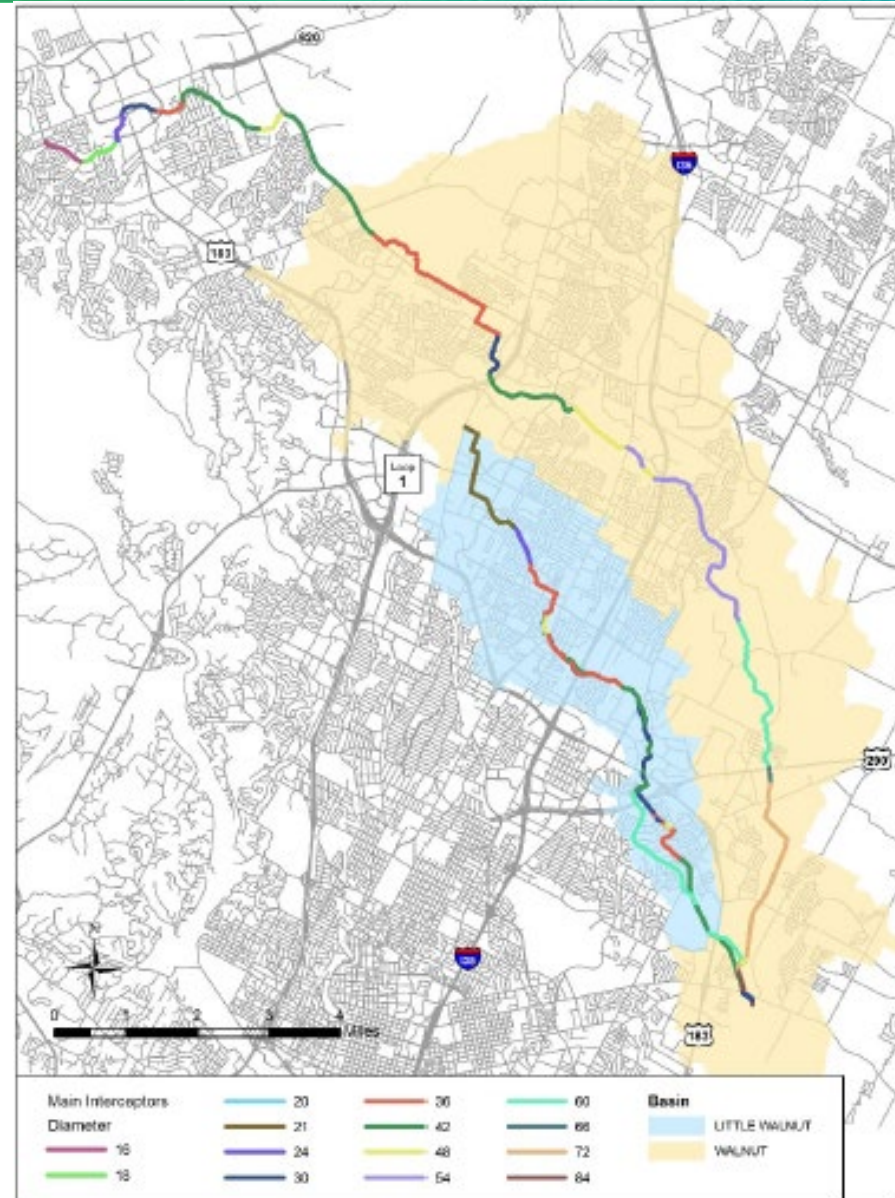
City Council Meeting  
August 28, 2025



# TOPICS COVERED

- Overall Project Summary
- Project Objective/Benefits
- Site Evaluation
- Parkland Impacts

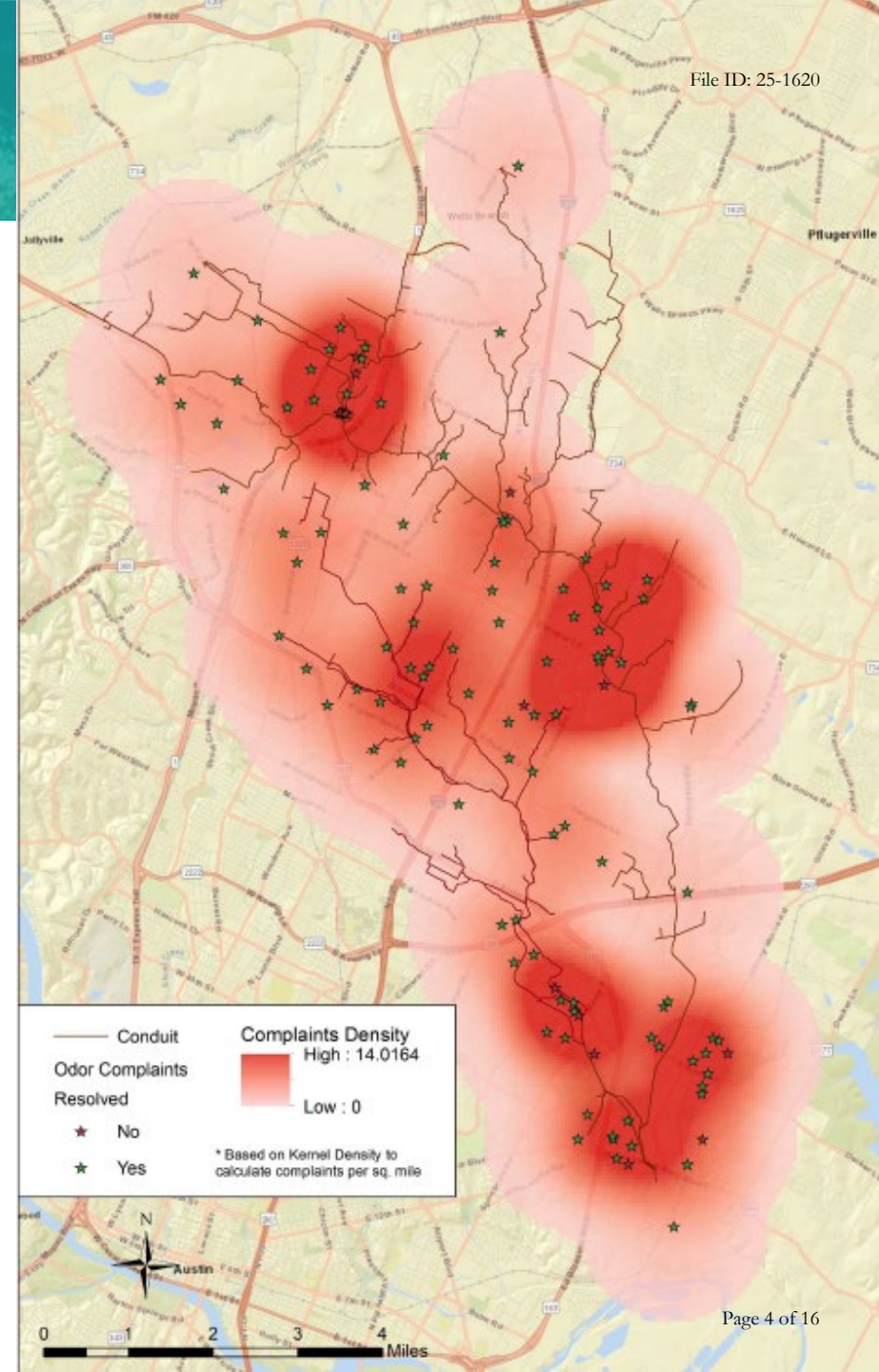
# GREATER WALNUT INTERCEPTOR AREA



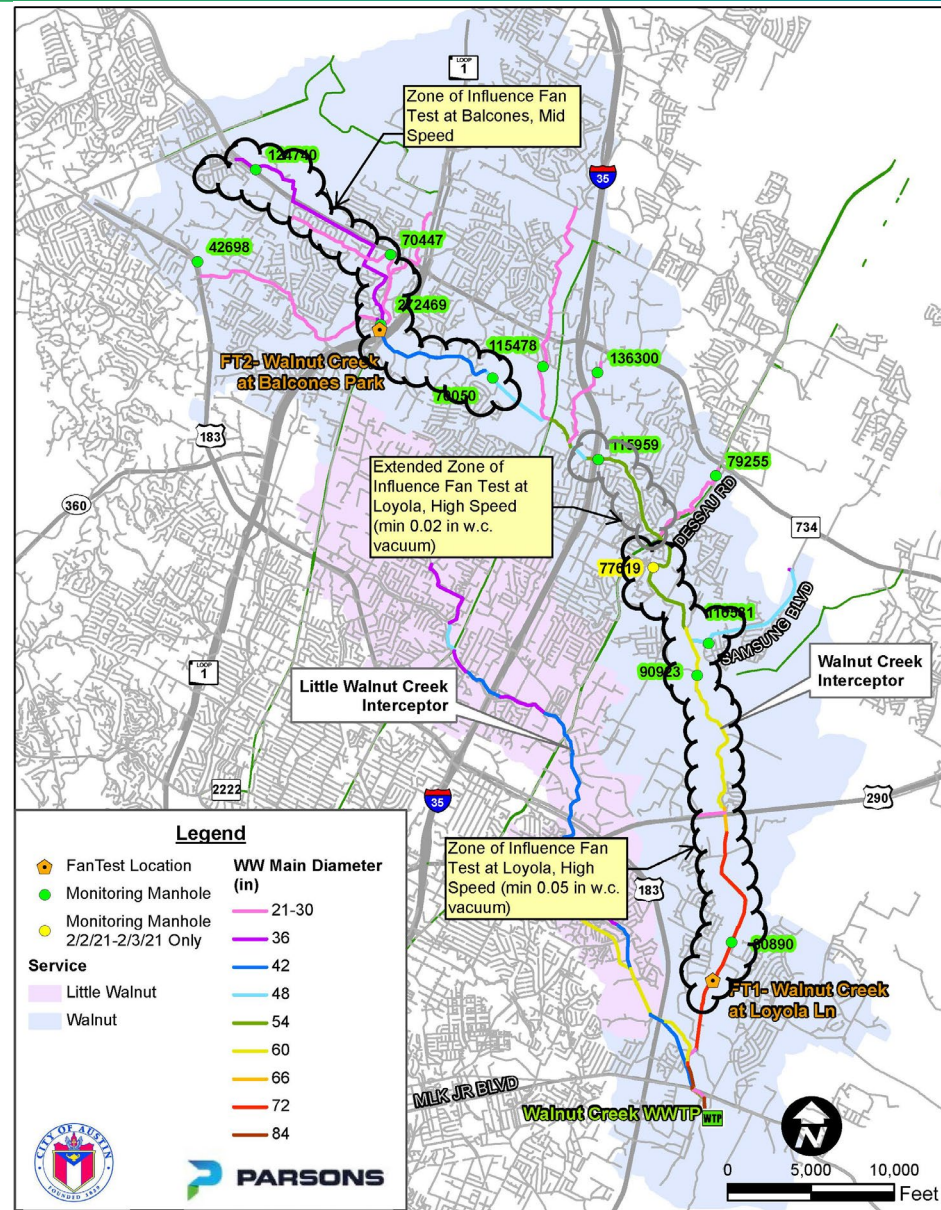


# BACKGROUND

- Odor issues along Walnut Creek interceptor, including cluster of complaints in Balcones Park area
- Odor control: fans to withdraw air from sewer and treatment process to control odor in exhaust air
- To reduce impact, primary treatment will be low-profile biotrickling filters, which requires smallest footprint
- Balcones District Park is a strategic location. Confluence of smaller collectors, beginning of large interceptor
- Several locations considered for odor control facilities



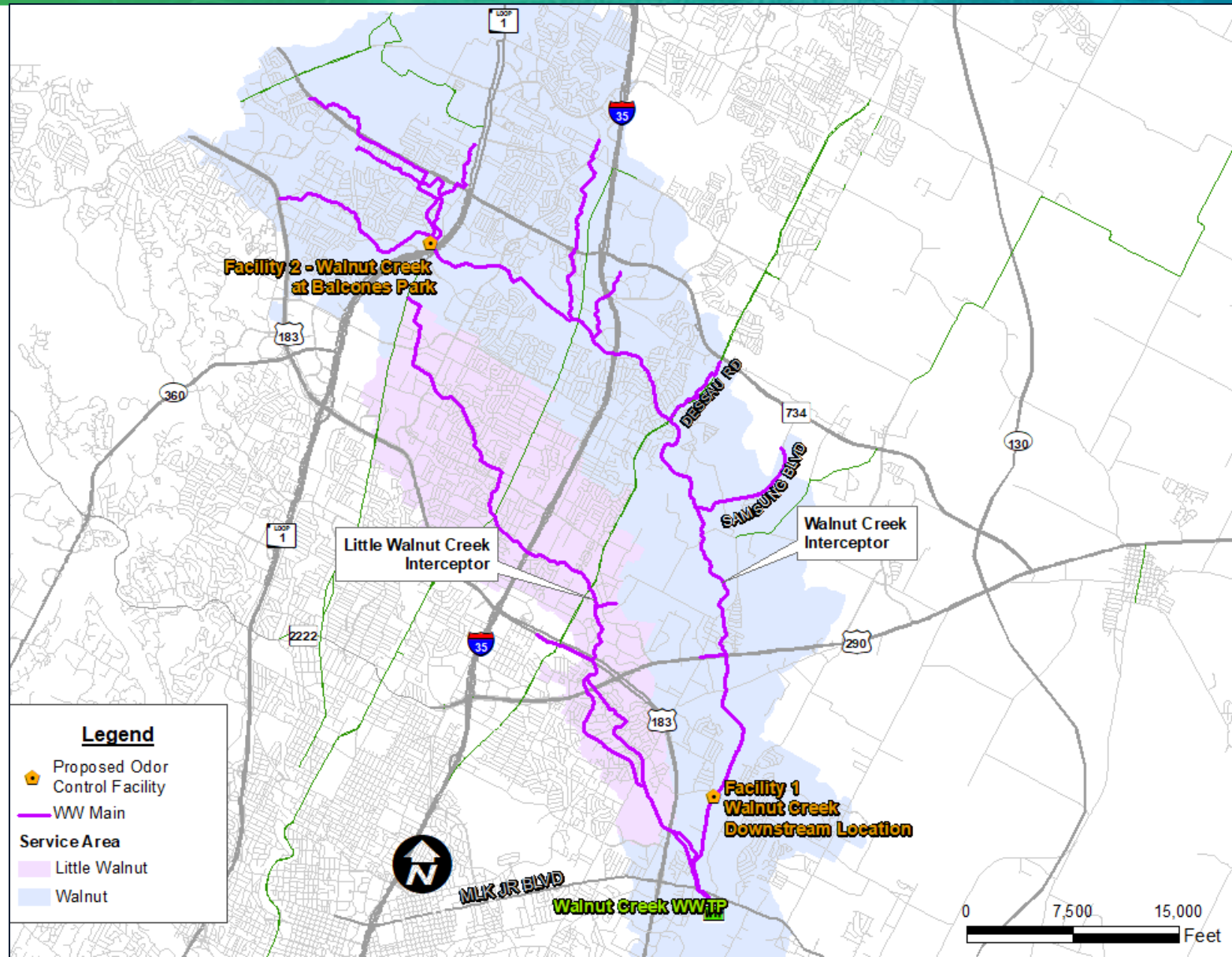
# FAN TESTING RESULTS





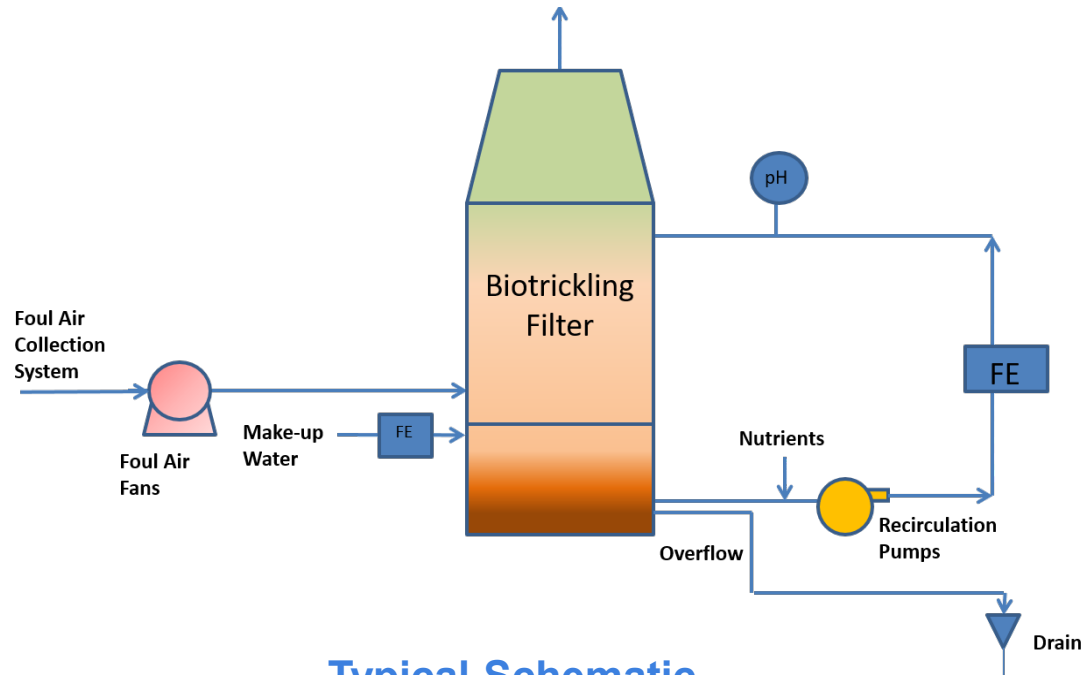
# RECOMMENDED APPROACH FOR CENTRALIZED ODOR CONTROL: TWO FACILITIES

File ID: 25-1620



# RECOMMENDED APPROACH FOR CENTRALIZED ODOR CONTROL: BIOTRICKLING FILTERS

File ID: 25-1620



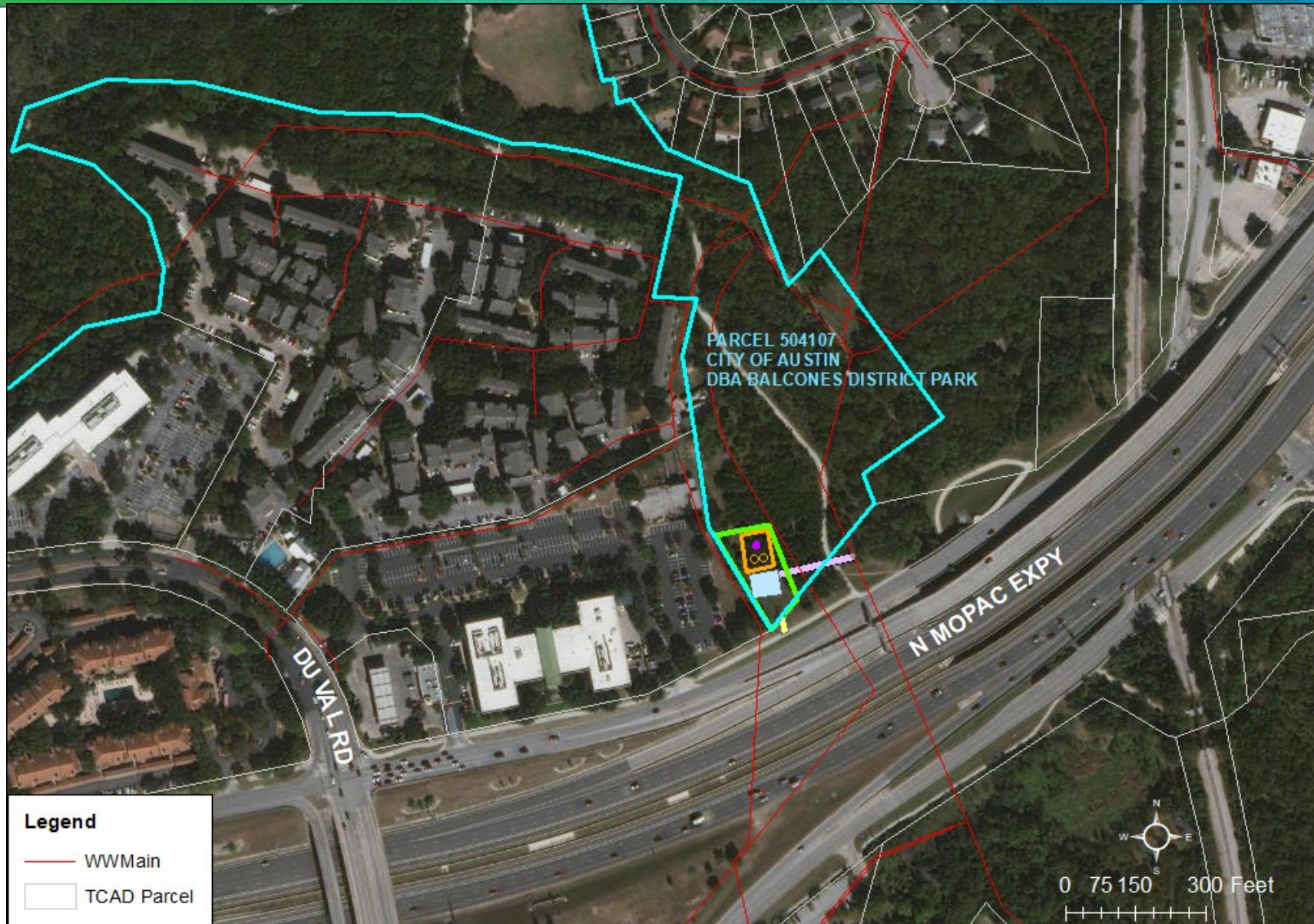
Typical Schematic



Low Profile Biotrickling Filter



# PROPOSED SITE LOCATION





# BALCONES DISTRICT PARK LOCATION



- Best location for odor control facility – maximizes zone of influence
- Facility and Walnut Creek interceptor on same side of the creek
- Outside Critical Water Quality Zone and Edwards Aquifer recharge zone
- Adjacent to Mopac Expressway and commercial area
- Adequate separation from structures north and south of facility
- Away from hike/bike trail, screened by trees



# OTHER SITE LOCATIONS CONSIDERED

## Location A

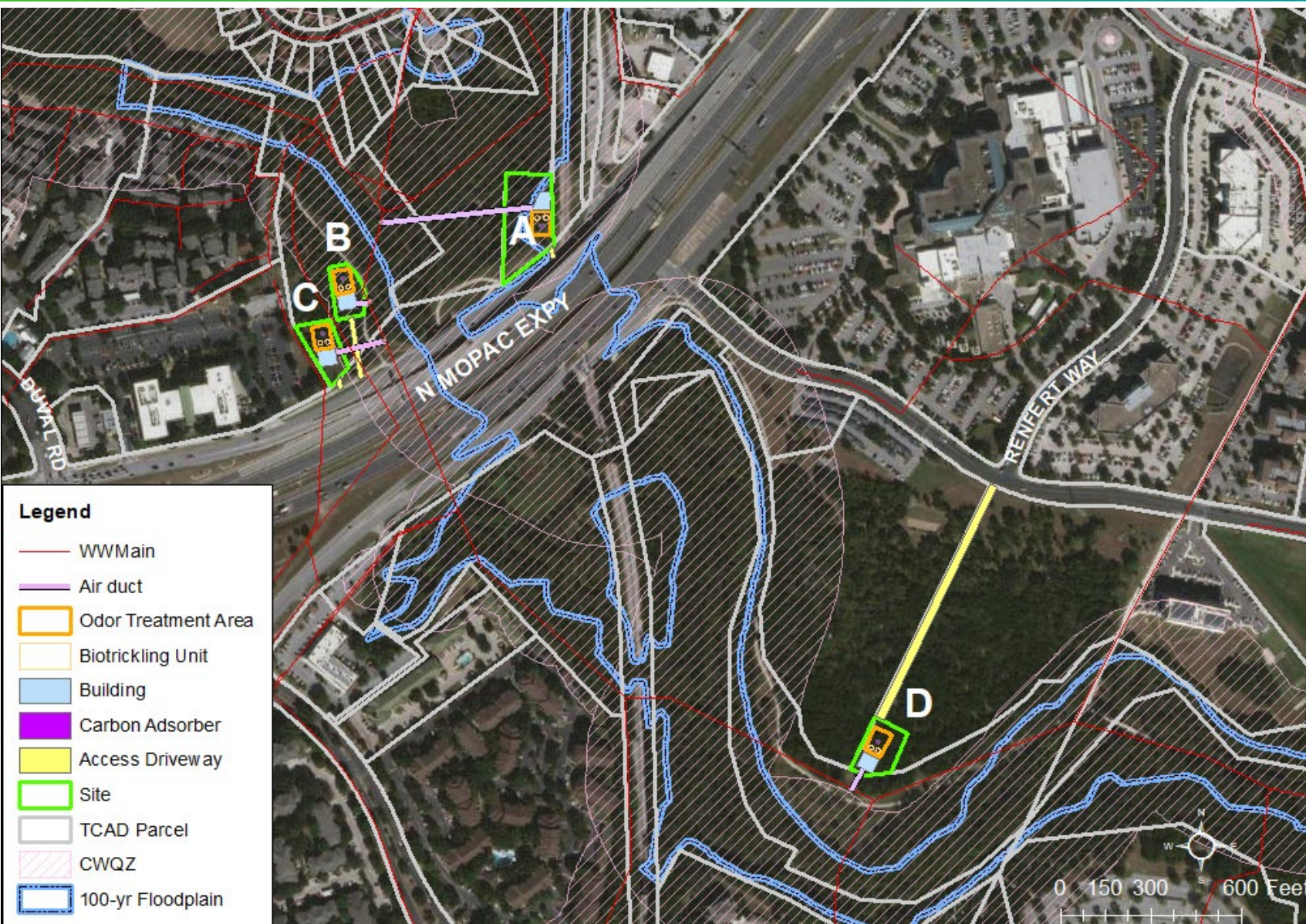
- Privately owned
- In Critical Water Quality Zone
- Opposite side of Walnut Creek, would require above ground air duct

## Location B

- In Balcones Park property
- In Critical Water Quality Zone
- Next to hike/bike trail
- Greater park impact/disruption

## Location D

- North Austin Medical Center parcel
- Near interceptor but a significant distance from cluster of complaints
- Site has been developed by medical center





# SITE PHOTOS



# ENTRANCE TO SITE – VIEW FROM MOPAC





# PROPOSED SITE – VIEW FROM PARKING LOT





# AIRDUCT ROUTE – WEST STARTING FROM TRAIL





# MINIMIZING IMPACTS TO PARK

- Site borders MOPAC and commercial area and is a low usage area of the park
- Smallest possible site area for facility
- Low profile biotrickling filters and separation from trail reduces visual impact
- Outside Edwards Aquifer Recharge Zone and Critical Water Quality Zone
- Not within presumed endangered species habitat.
- Temporary trail reroutes provided for construction of air duct and WW line and driveway across trails.
- Site runoff controls provide no net increase in runoff flow rate from the site.
- Very low traffic impact – few periodic (typically weekly) operations/maintenance trips to the site.

# CHAPTER 26 PARKS AND WILDLIFE CODE DUE DILIGENCE FOR UTILITY ASSIGNMENT

File ID: 25-1620

- **Section 26.001**
  - A department may not approve any project that requires the use of any public land designated as a park unless the department, acting through its duly authorized governing body or officer, determines that:
    1. There is no feasible and prudent alternative to the use or taking of such land – **CONFIRMED**
    2. The program or project includes all reasonable planning to minimize harm to the land, as a park, recreation area, scientific area, wildlife refuge, or historic site, resulting from the use or taking - **CONFIRMED**
- **Austin Water requests a recommendation to City Council for approval of 31,694 square feet for permanent use on parkland located at Balcones District Park. Mitigation amount \$742,361.**