

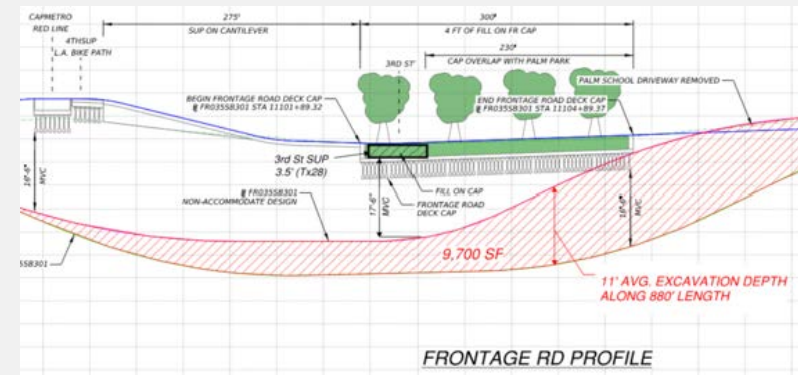
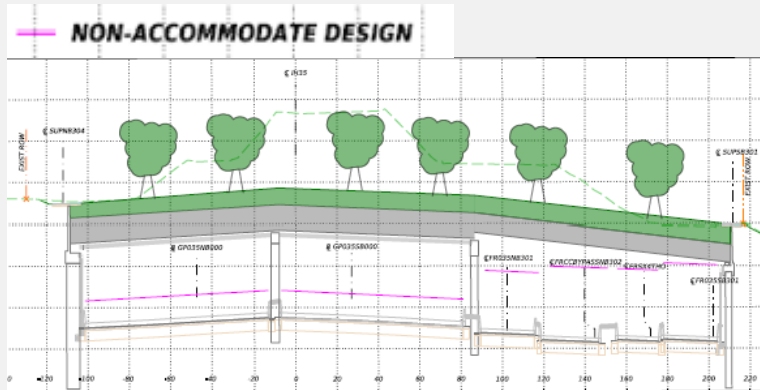


5/08/2026

COA Cap Options

RE-DESIGN FEE Cesar Chavez to 7th St

\$2.25M RE-DESIGN FEE



** Revise designs (currently near 95% complete) to no longer accommodate caps except between 4th St and CC. This effects the following design elements:

- IH 35 PGL
- 10 Ret Wall profiles
- 10 DS Ret wall designs
- 7 Bridge Layouts, abutment caps, columns, girder design (no jet fan loads). Effects UTL 3, UTL 4, BR 16, BR 18, UTL 5, BR 22, BR 23)
- 95% Design of 3 Cap abutments (6th/7th St, 5th/6th St, and 4th/5th St)

160' FULL CAP NORTH 3rd/PALM PARK ACROSS (GP/ML/FR) (Palm School Driveway Open)

NORTH

160' full E/W cap across (GP/ML/FR)
 (1.2 acres)

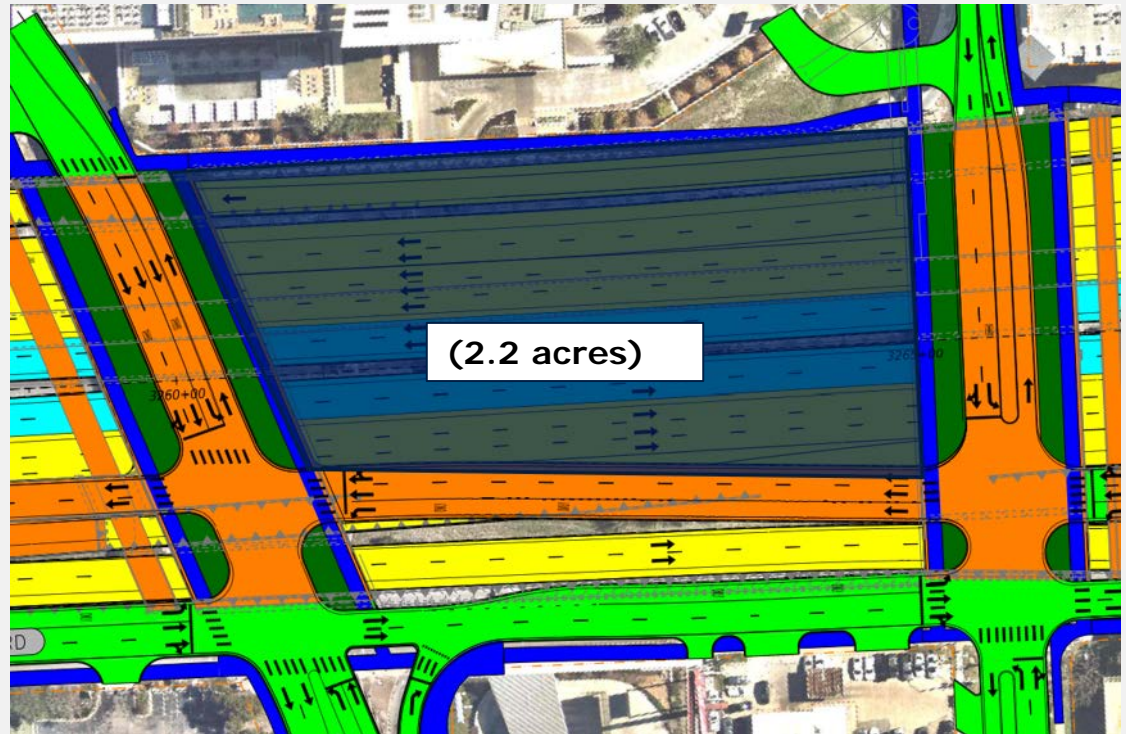
Futureproof	\$12,500,000
Cap	\$28,800,000
Full Build	\$41,300,000



FULL CAP 11th – 12th ACROSS (GP/ML)

11th/12th full E/W cap across
(GP/ML/FR)

Futureproof \$8,500,000



PAYOUT OPTION > \$41M SIB

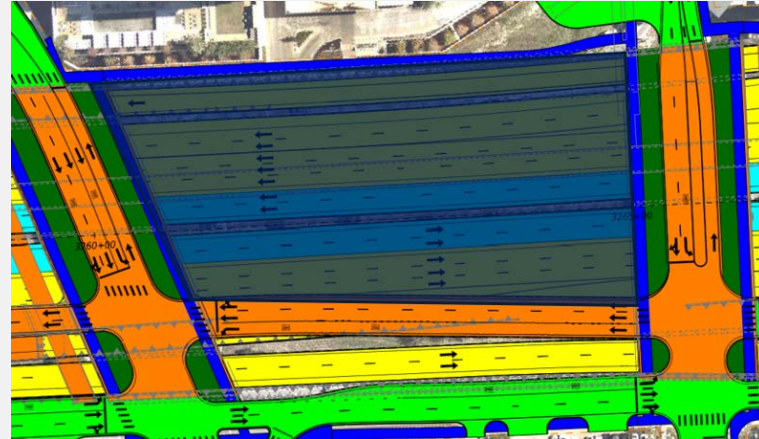
160' PALM PARK + FUTUREPROOF (11th/12th)

Year	% Payment	\$ (M)	Yearly Cumulative Totals	SIB \$41M/ DBT CAP/ CO BOND	
June 2026	5%	\$2.5	\$2.5	SIB/DBT CAP	
Nov 2026	2%	\$1.0	\$3.5	SIB/DBT CAP	
2027	-	-	-	\$0	
2028	-	-	-	\$0	
2029	13%	\$6.5	\$10.0	SIB/DBT CAP	
2030	20%	\$10.0	\$19.9	SIB/DBT CAP	
2031	10%	\$5.0	\$24.9	SIB/DBT CAP	
2032	10%	\$5.0	\$29.9	SIB/DBT CAP	
2033	10%	\$5.0	\$34.9	SIB/DBT CAP	
2034	15%	\$7.5	\$42.3	\$1.3	
2035	15%	\$7.5	\$49.8	\$7.5	
				\$8.8	CO Bonds

MAINTENANCE COST



Southern Gateway Ph2 (600' full width)
Yearly \$500k
Tunnel Inspection every 2 years \$114k (plus traffic control)
Between \$500k-\$625k yearly



11th/12th
Approx SF Southern Gateway Ph2
Similar Maintenance
\$500-\$600k yearly