



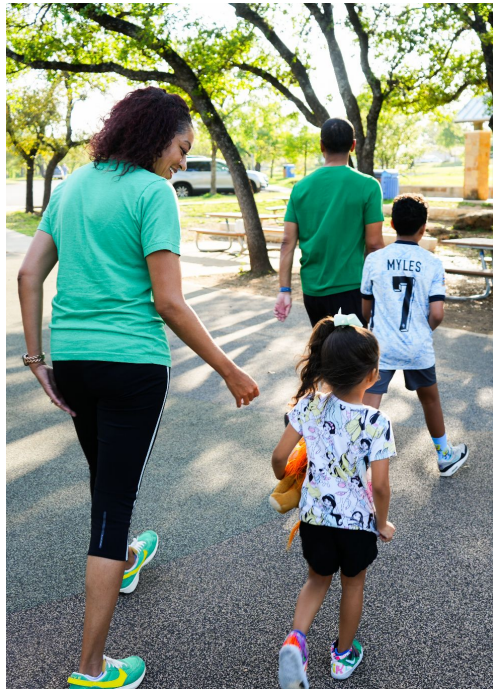
AUSTIN PARKS FOUNDATION

Presentation to Climate, Water,
Environment and Parks Committee
June 2, 2025



Who we are

For 33 years, Austin Parks Foundation has been connecting people and parks in Austin.





Who we are

APF is focused on creating equitable access to great parks for **all** Austinites, and helps fill the City's funding and resource gap in order to develop and maintain Austin's approx. **400** parks.





APF Board of Directors and Staff

18 board members, 25 staff members, **all 10 city council districts represented**





Our Mission

Austin Parks Foundation partners with our community to enhance people's lives by making our public parks, trails and green spaces better through volunteerism, innovative programming, advocacy and financial support.

Our Vision

Austin Parks Foundation envisions a community in which the lives of **all** people are enriched through access to Austin's well-maintained public parks, trails and green spaces.

Our Values

Collaborative, Dependable, Inclusive, Innovative,
Nimble, Positive



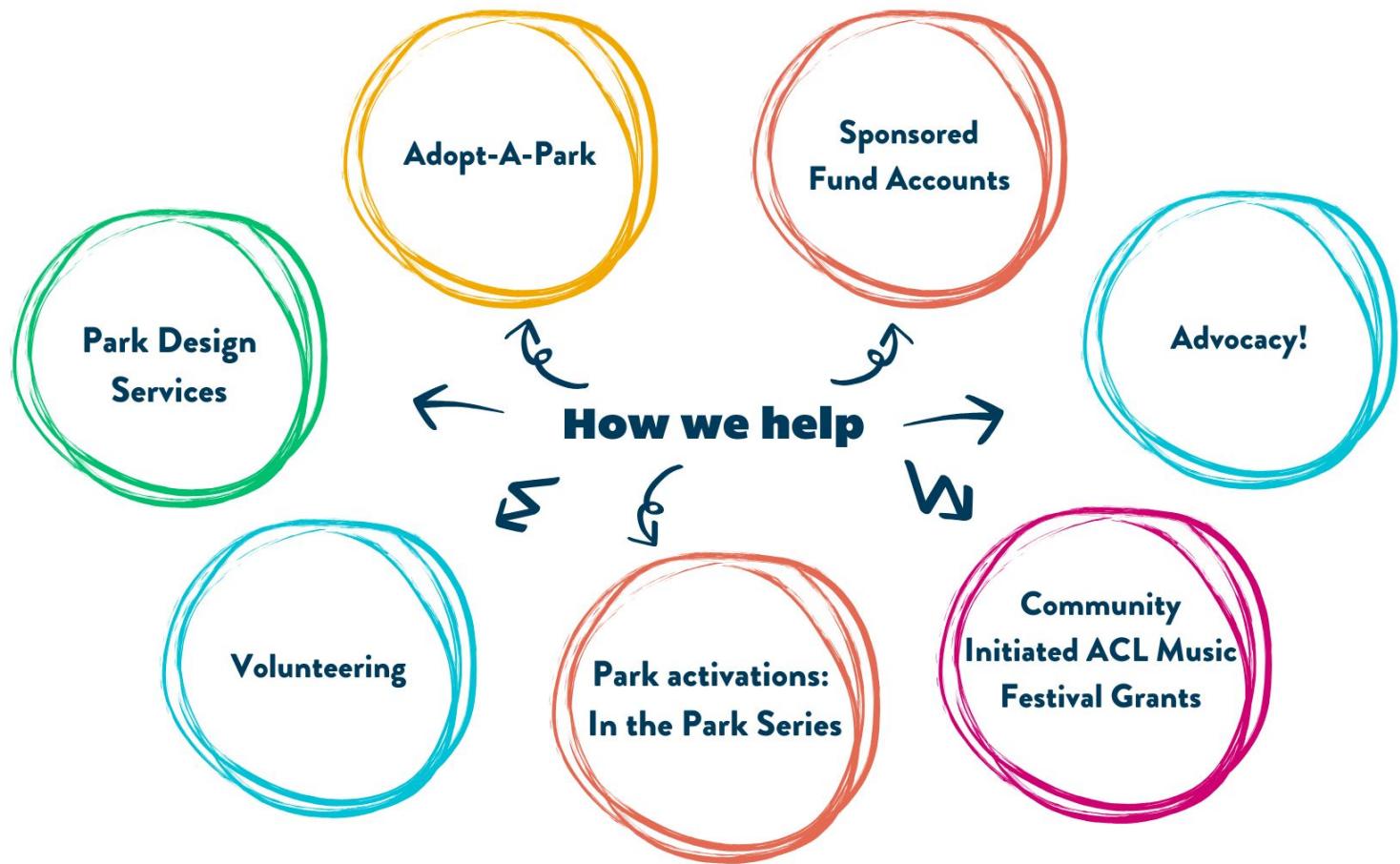
What's the difference between APF and PARD?



- Independent nonprofit that works in collaboration with the parks department
- Our role is to collaborate and partner
- Receives permission from PARD for any volunteer projects, capital projects or events held on parkland
- Leverages resources to improve parks



- Owns and manages trails, parkland, recreational facilities, pools, etc.
- Responsible for setting objectives and strategies for city's goals pertaining to parkland and recreational opportunities
- Grants permission for volunteer projects, capital projects and events held on parkland





Volunteers in 2024

234

volunteer projects

12,115

volunteers

136

parks impacted

76,750

pounds of litter collected

\$1,042,043

value of volunteer labor





It's My Park Day

AUSTIN PARKS FOUNDATION

IT'S MY PARK DAY SPRING IMPACT

2025

89 Projects

3,336 VOLUNTEERS 995 YDS³ OF MULCH SPREAD 10,450 LBS. TRASH COLLECTED

[AUSTINPARKS.ORG/IMPD](https://austinparks.org/impd)





Adopt-A-Park and SFA's

Park Adopters serve as key community representatives for their park by organizing a community-based volunteer group, and making an ongoing commitment to improving their park.

Sponsored Fund Accounts allow Adopt-A-Park groups to fundraise for their park by joining into an agreement with APF. Funds raised can be designated for a particular park project.





Advocacy

FACILITIES MAINTENANCE POSITIONS

for 18,737 acres of parkland

Current



Asking for



Needed



 = 21 Employees

***Per the National Recreation and Park Association standards for
maintenance of parks and recreational facilities.**



Community Initiated ACL Music Festival Grants



Austin Nature & Science
Center: Dino Pit



Alderbrook
Pocket Park



Parque
Zaragoza



Park Activations - In the Park Series

Movies, Playdates, Art, Fitness and our brand-new **Hoops** in the Park!





Zilker Eagle Mini Train

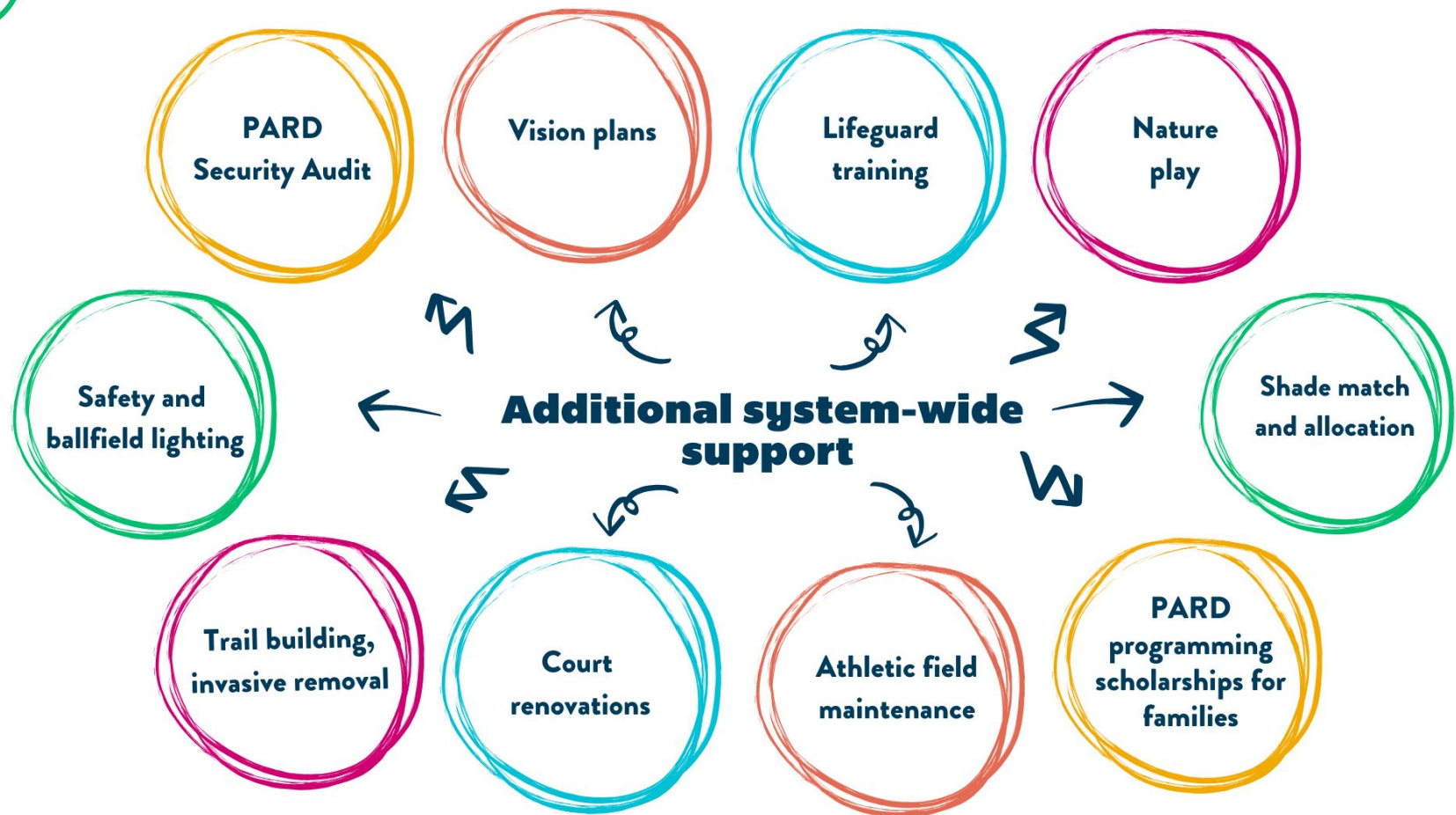
- Re-opened June 2024
- **115,991** total riders
- 5% of total riders rode for free because of community hours





Mascot Ride: National Mini Train Day





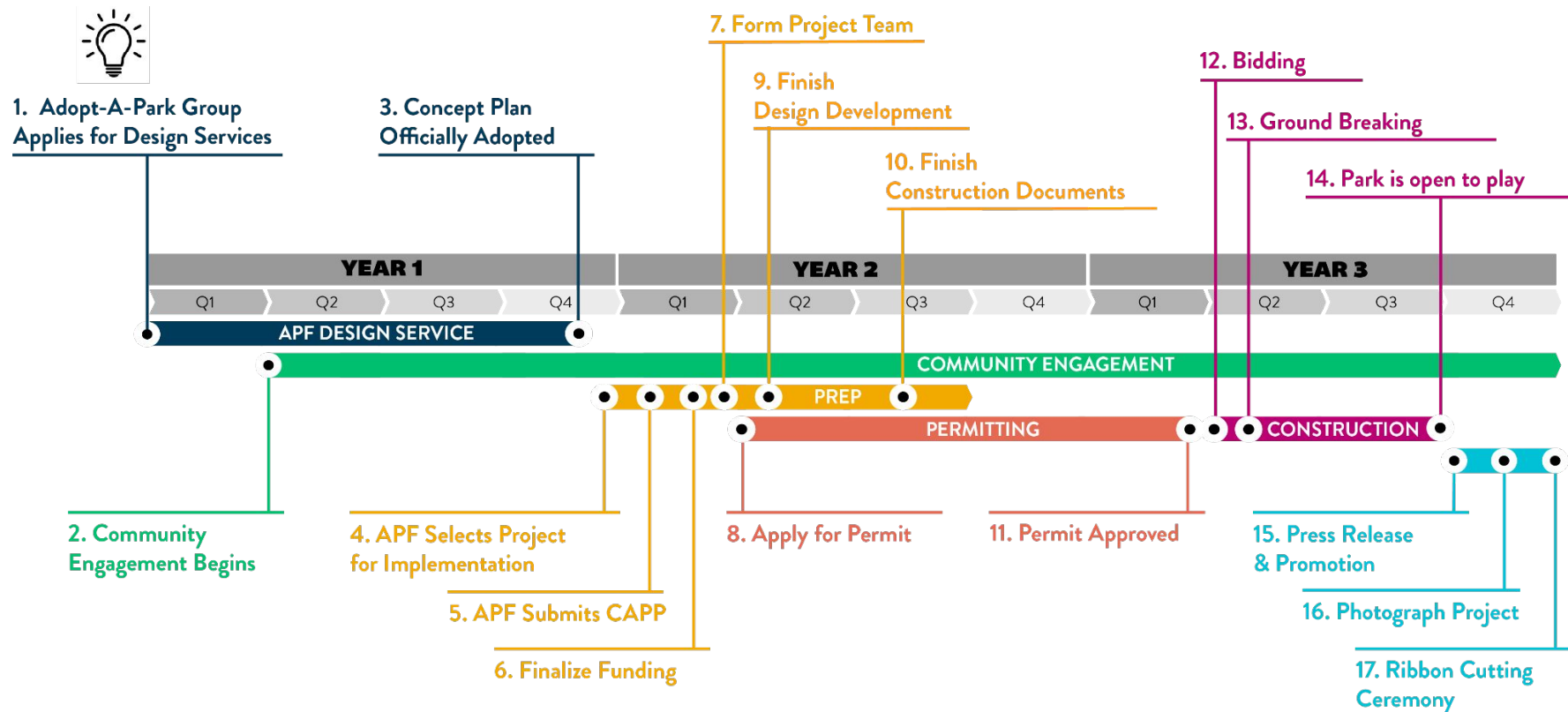


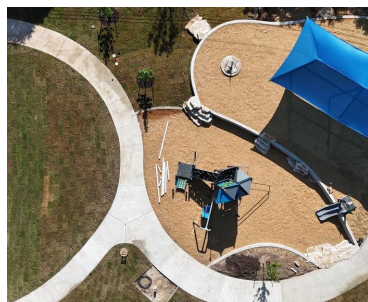
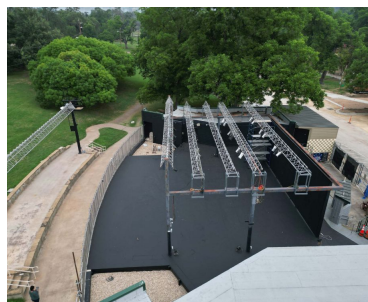
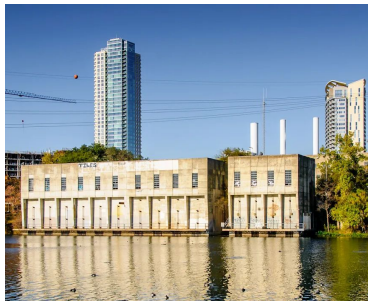
Offered by Austin Parks Foundation

A large field of pink flowers, likely Texas Pink Pinks, is in the foreground. In the background, a white wall features a sign for the Austin Parks Foundation. The sign includes the text: "This park is undergoing a major planting project with:", the Austin Parks Foundation logo (a stylized bee), "AUSTIN PARKS FOUNDATION", "a non-profit 501(c)(3)", and "Learn more at www.austinparks.org".[illegible]



Typical Project Timeline







Republic Square Park





Republic Square Park

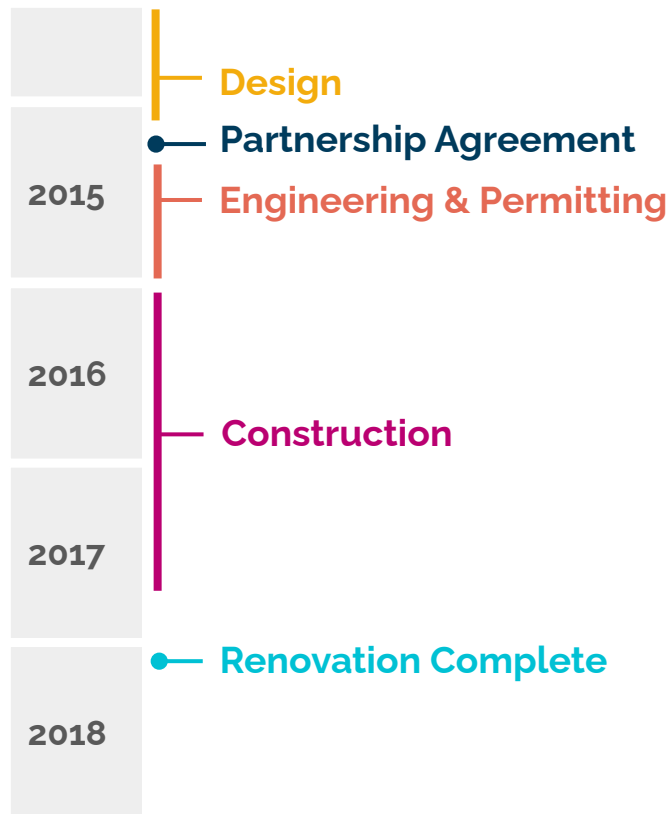
OUR ROLE

Integral partner with DAA &
COA PARD
Led Capital Campaign
Managed Construction

OUR FUNDING

\$5 million
Construction

\$1 million
Endowment





Little Walnut Creek Greenbelt





Little Walnut Creek Greenbelt

OUR ROLE

Participated in PARD Vision Planning
Provided Design Services & Led Design
Facilitated Community Engagement
Provided Funding & Leveraged Partnerships
for Funding
Partnered in Construction

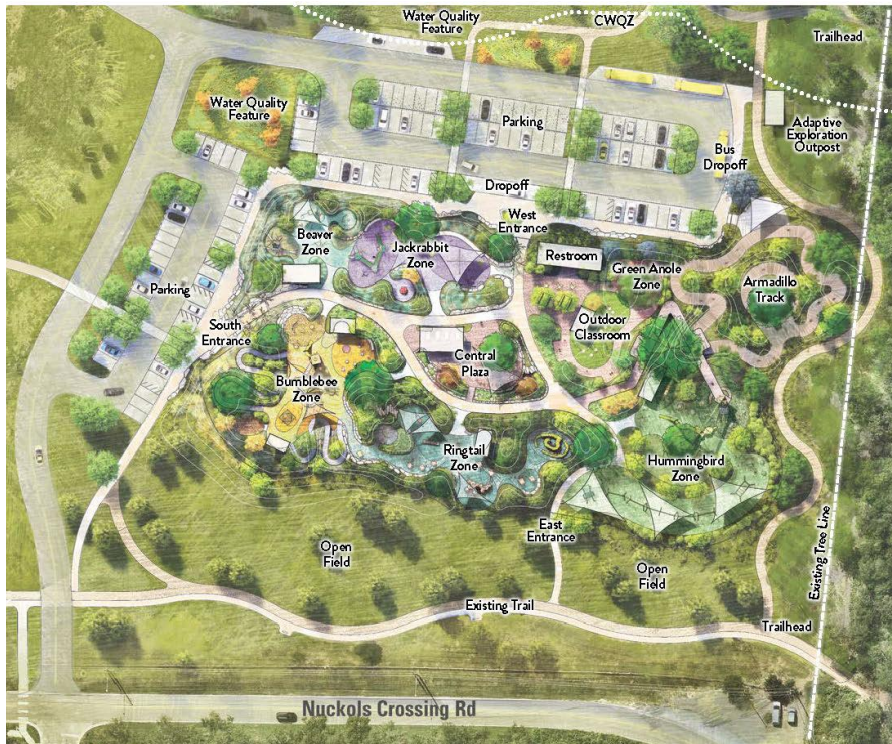
OUR FUNDING

~\$700,000 (*spent to date*)





All Abilities Playground at Onion Creek Metro Park





All Abilities Playground at Onion Creek Metro Park

OUR ROLE

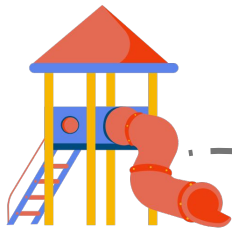
Project Lead
Project Management
Capital Campaign

OUR FUNDING

~\$5,700,000 (raised to date)
from grants, individual donations,
ACL Board Designated funds







\$4.5 Million

APF PARK IMPROVEMENT PROJECTS

Park projects require community input, extensive permitting and planning, so some of the projects identified by APF will take years to complete. These designated funds are earmarked for specific projects across the city.

2024 ACL MUSIC FESTIVAL



\$2.4 Million

APF PROGRAMS

These funds support the infrastructure that makes our park projects happen. These funds also support APF's work to improve parks and green spaces through advocacy, volunteerism, and programming, including It's My Park Day and our In the Parks Series.



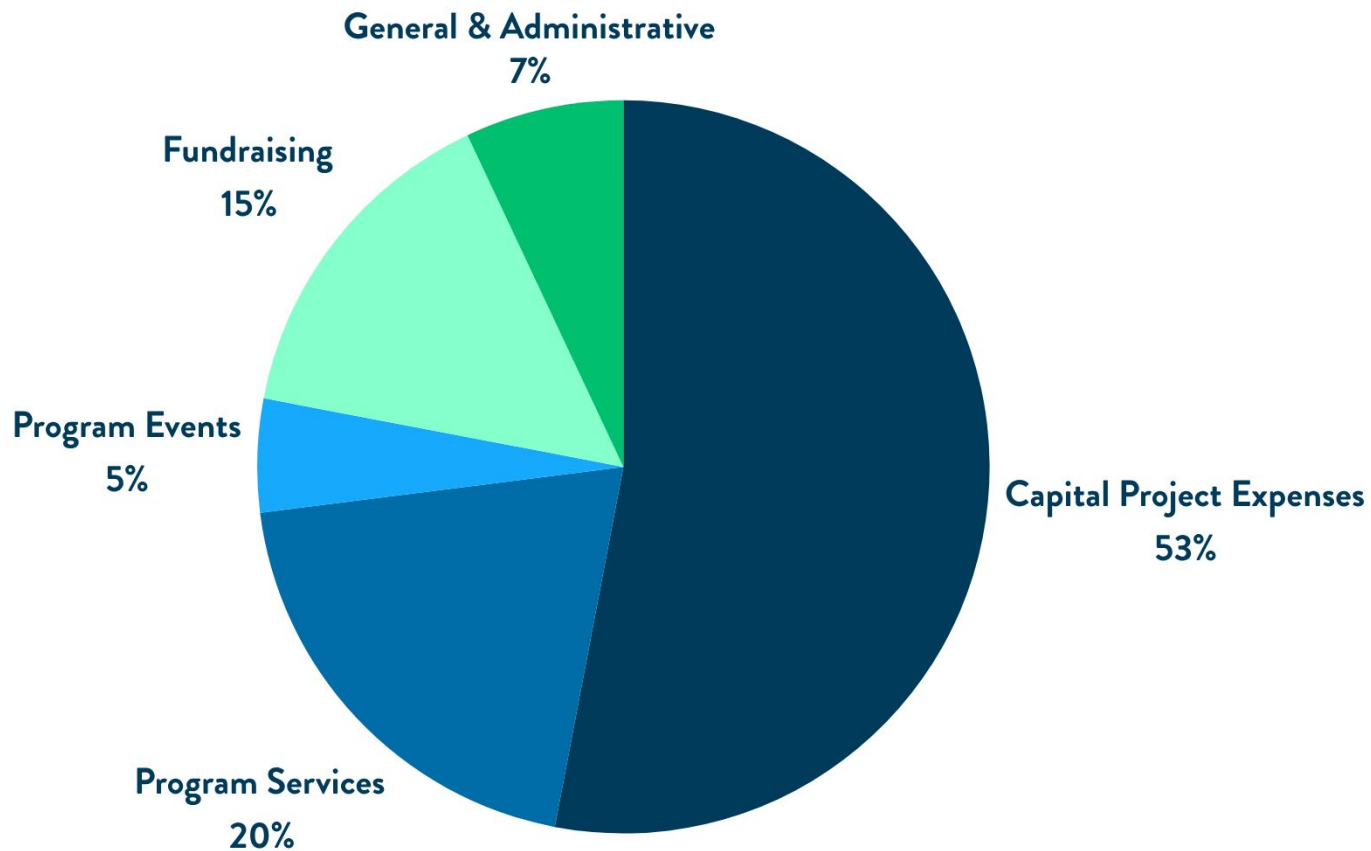
\$1.5 Million

PARD/CITY ALLOCATION

This is the City's portion of the revenue based on its event revenue policy.



APF Expenses by Function

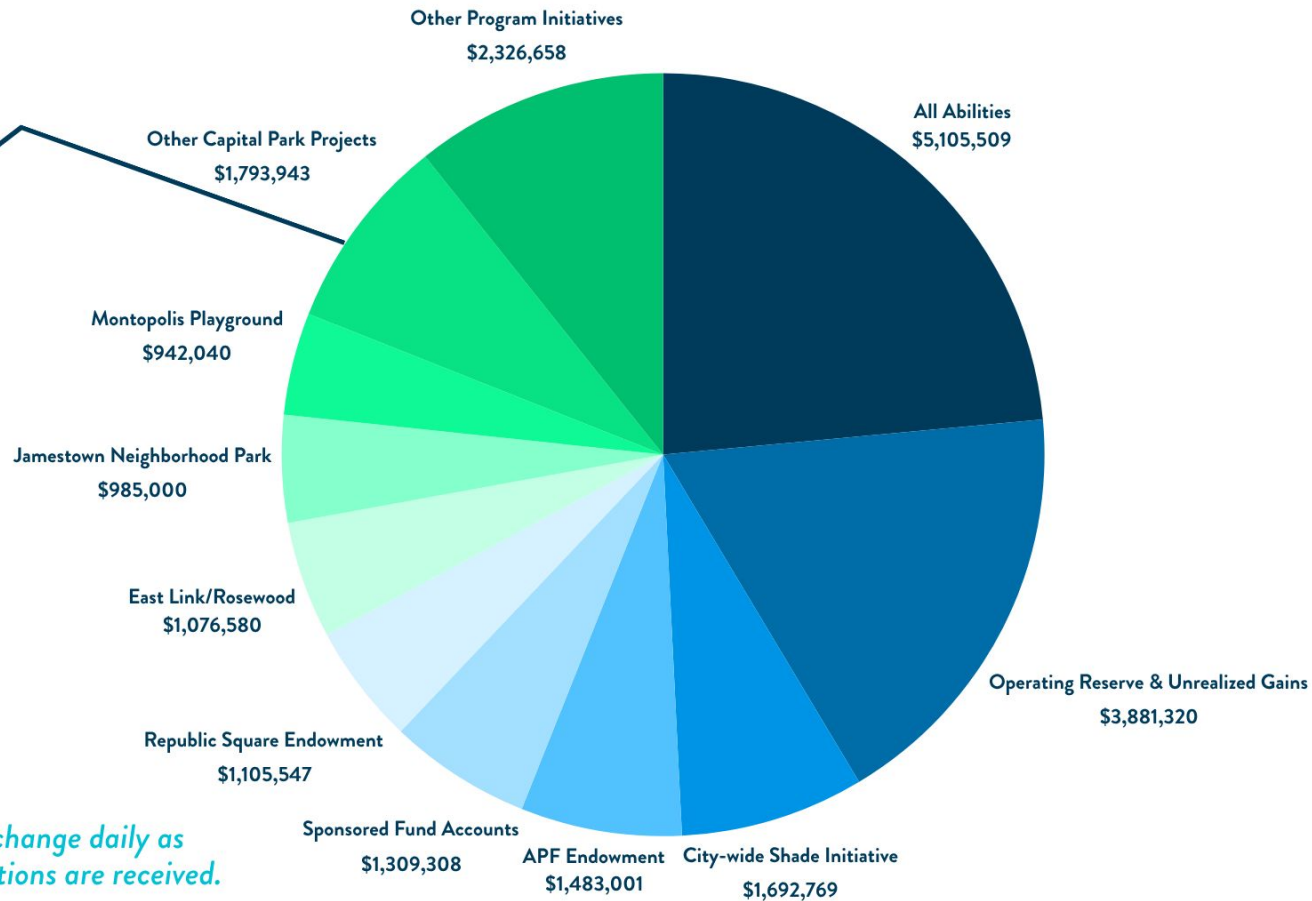




Future Investments

Examples:

Grand Meadow ~\$630K
Little Walnut Creek ~\$190K
Parque Zaragoza ~\$120K
Govalle/Givens ~\$100K



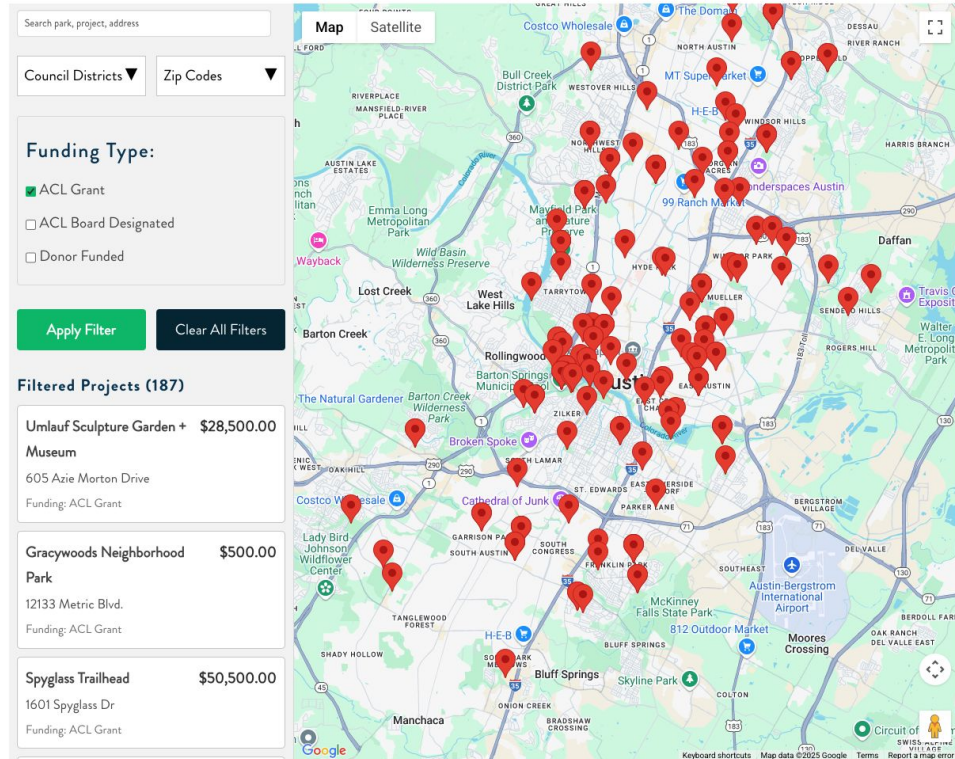
**These numbers could change daily as bills are paid and donations are received.*



Coming Soon: Impact Map

Currently under construction, this **interactive map** will display notable projects completed by Austin Parks Foundation.

The search can be filtered by city council district, zip code, funding type or keywords.





Learn more and get involved

Stay up to date with all things APF by following us on social media @austinparksfdn or on our website at austinparks.org.



If you want information coming straight to your inbox, sign up for our monthly **newsletter**:

