


Property Proposed for Acquisition at 9825 Spectrum Dr., Bldg. 2, Austin, TX 78717



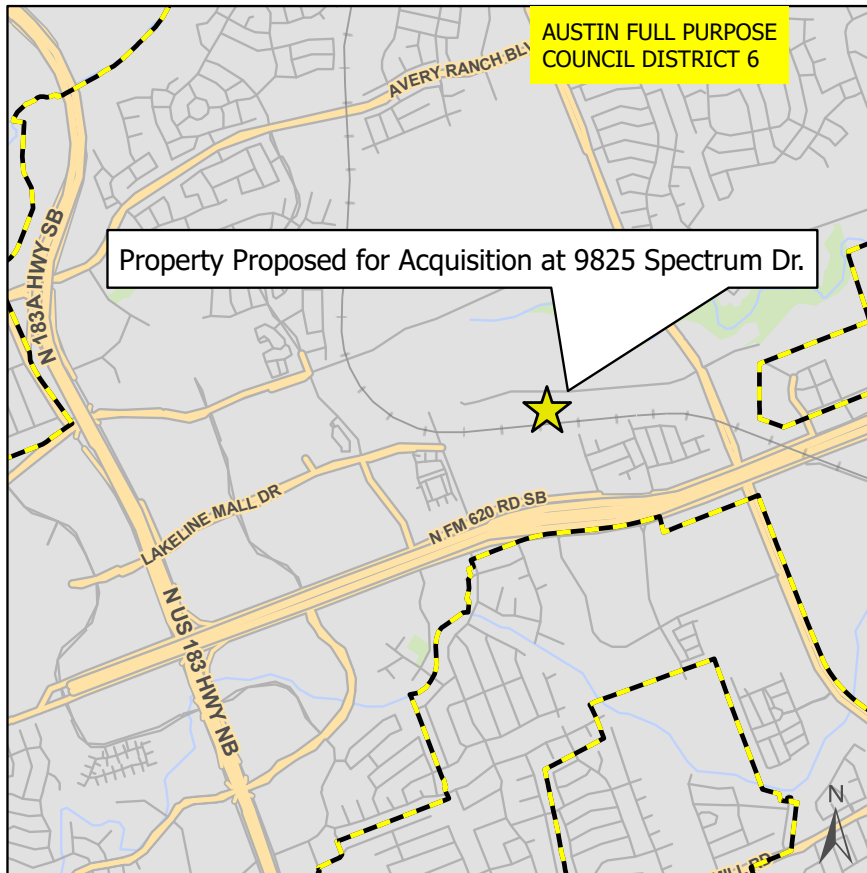
This product is for informational purposes and may not have been prepared for or be suitable for legal, engineering, or surveying purposes. It does not represent an on-the-ground survey and represents only the approximate relative location of property boundaries.

This product has been produced by Austin Financial Services for the sole purpose of geographic reference. No warranty is made by the City of Austin regarding specific accuracy or completeness.

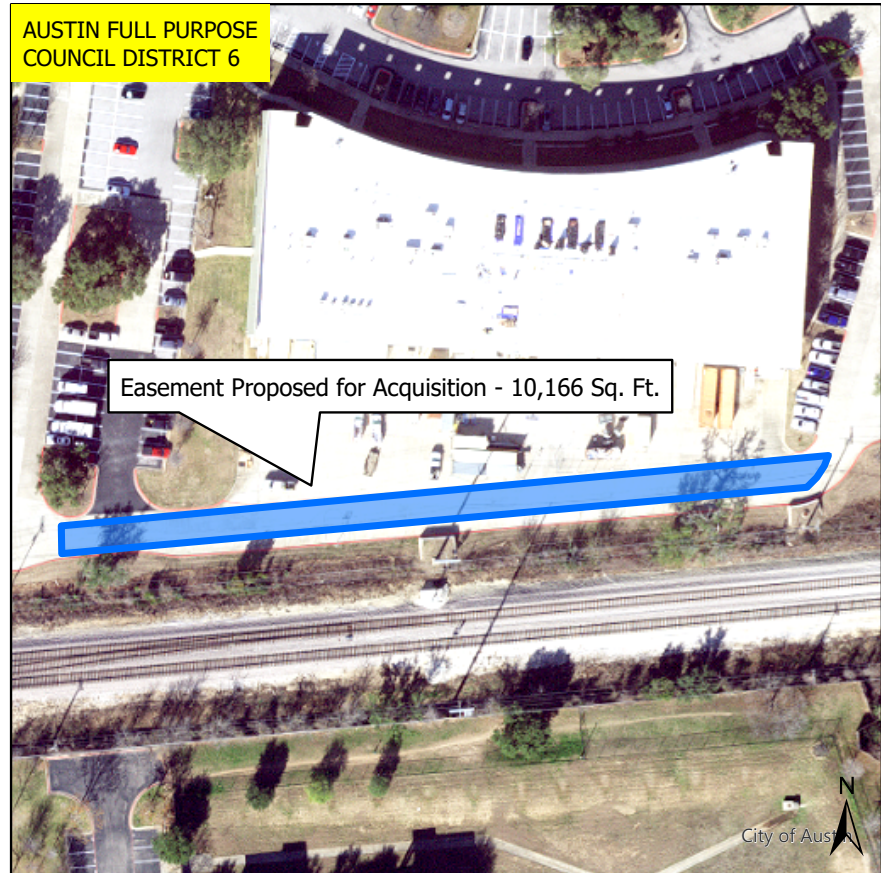
Map Produced by: Robert Starke - 1/15/2026

 City Council Districts

Nearmap US Vertical Imagery by ESRI



0 2,500 5,000 7,500 Feet



0 50 100 150 200 Feet

City of Austin