

Properties Proposed for Acquisition at 2100 S. I35, Austin, TX 78704

City of Austin
 Council Meeting Backup Date: April 24, 2025
 File ID: 25-0440




FINANCIAL SERVICES DEPARTMENT

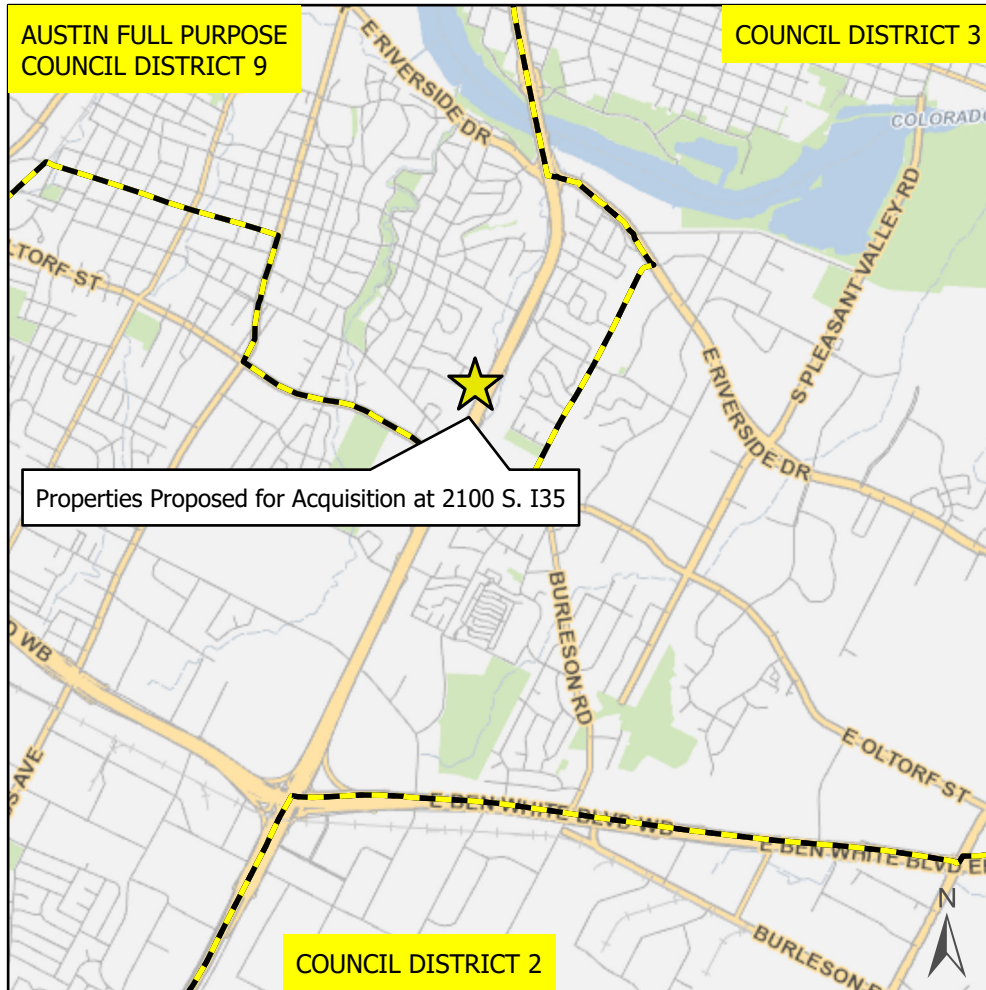
This product is for informational purposes and may not have been prepared for or be suitable for legal, engineering, or surveying purposes. It does not represent an on-the-ground survey and represents only the approximate relative location of property boundaries.

This product has been produced by the Financial Services Department for the sole purpose of geographic reference. No warranty is made by the City of Austin regarding specific accuracy or completeness.

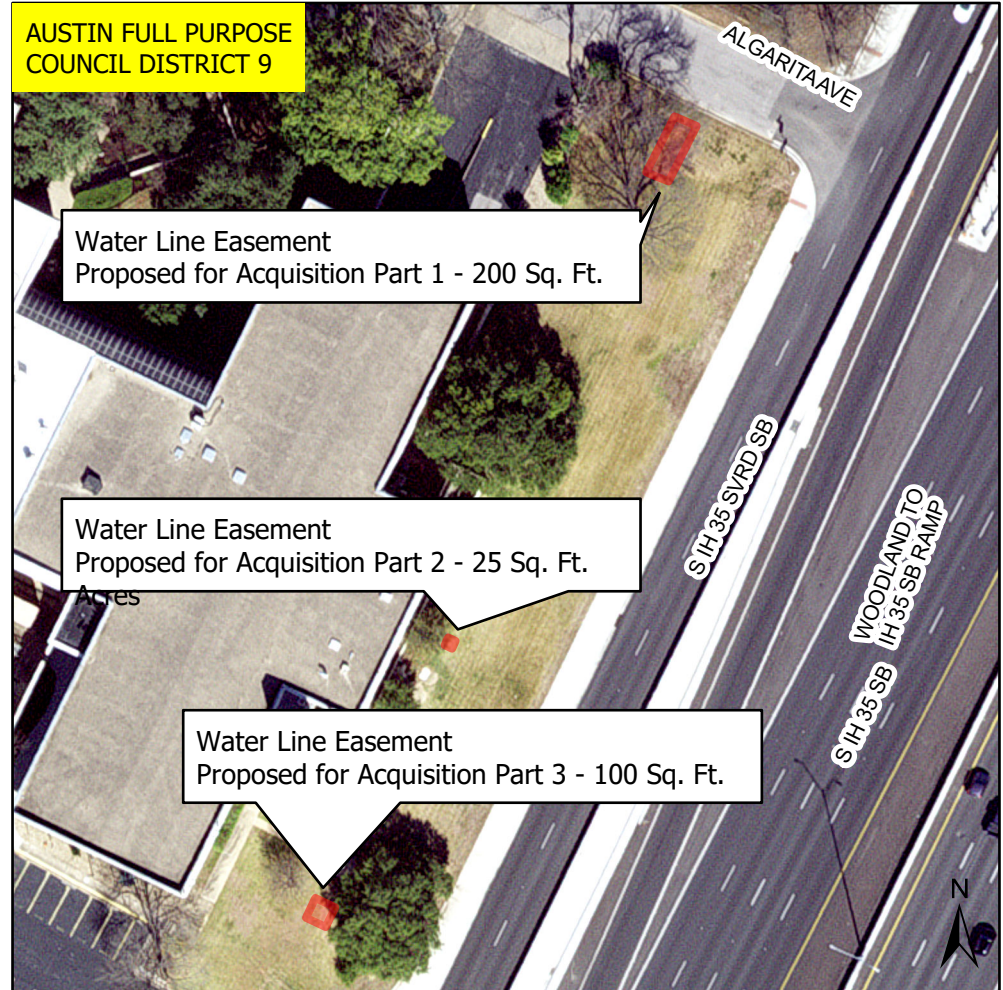
Produced by Tomas Fernandez 02/07/2025

 City Council Districts

Nearmap US Vertical Imagery by ESRI



0 1,500 3,000 4,500
 Feet



0 50 100
 Feet