



TRANSPORTATION
PUBLIC WORKS



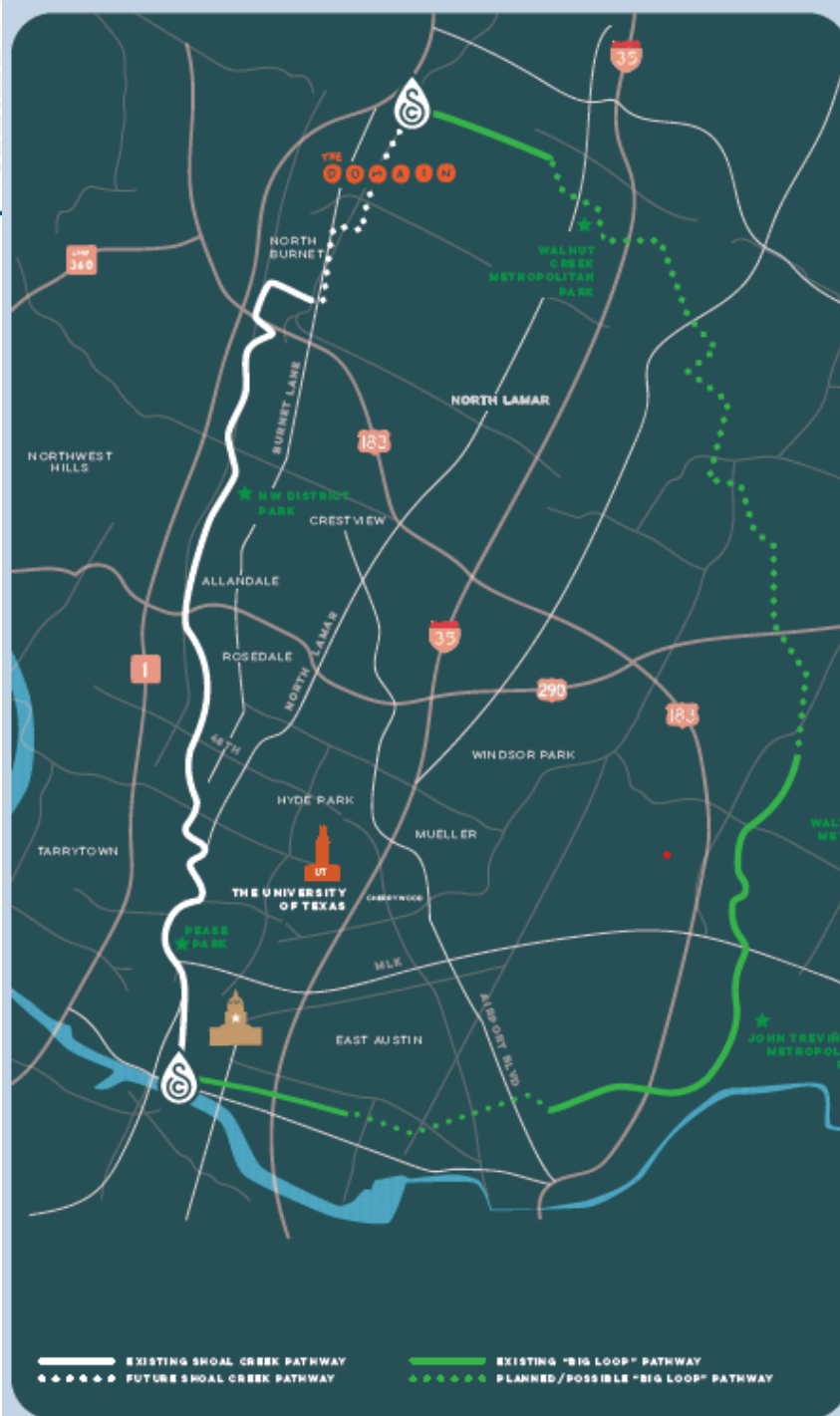
TRANSPORTATION
PUBLIC WORKS

“The Big Loop” Urban Trails Update Mobility Committee

September 19, 2024

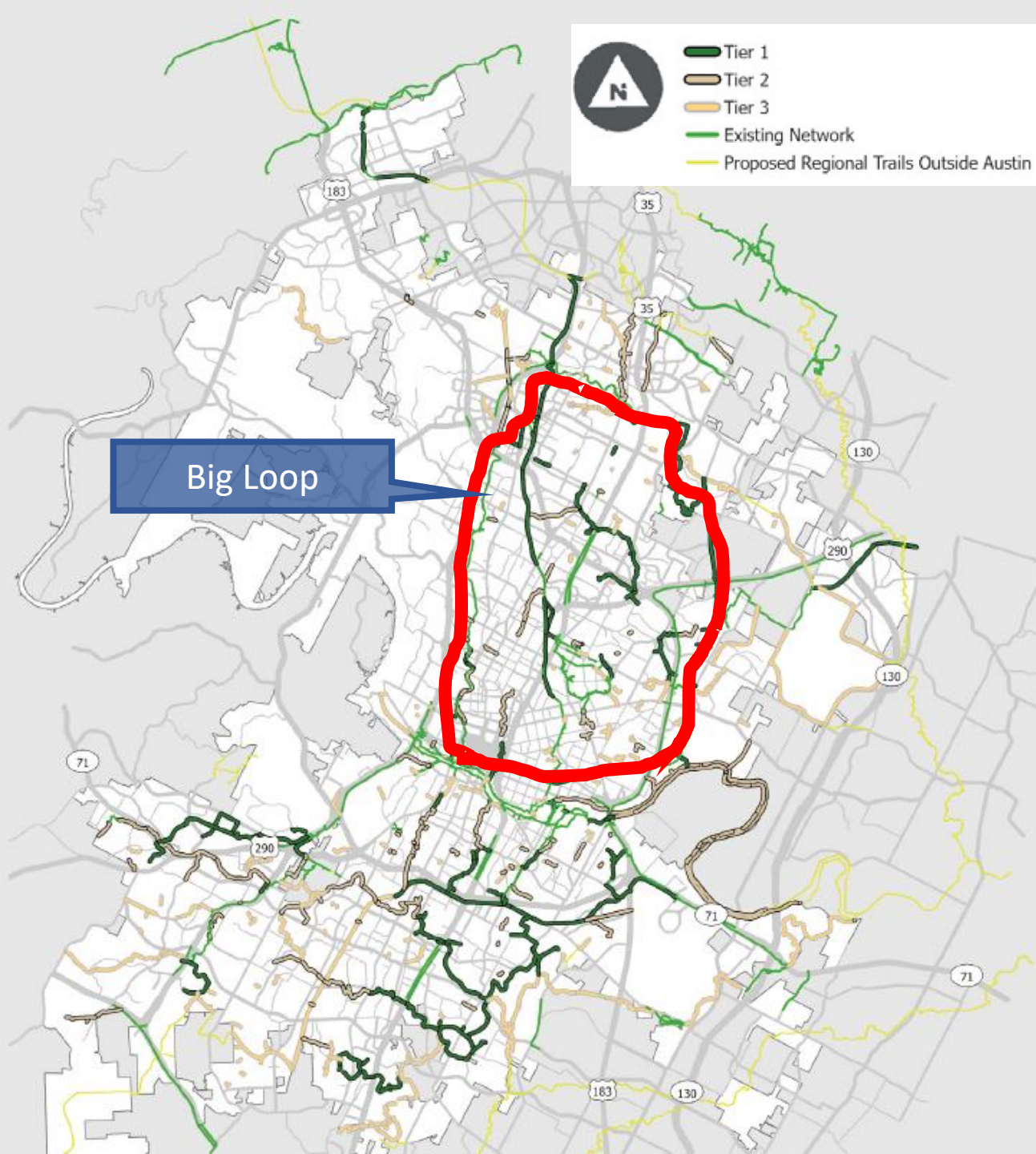
John Eastman

Sidewalks and Urban Trails Division Manager



“The Big Loop”

- 30-mile loop highlighted in the 2023 Urban Trails Plan
- Includes portions of: Shoal Creek Trail, Red Line Trail, Northern Walnut Creek Trail, Southern Walnut Creek Trail, Mokan Trail and 3rd & 4th Street Bikeway



Urban Trails Network

68 miles existing

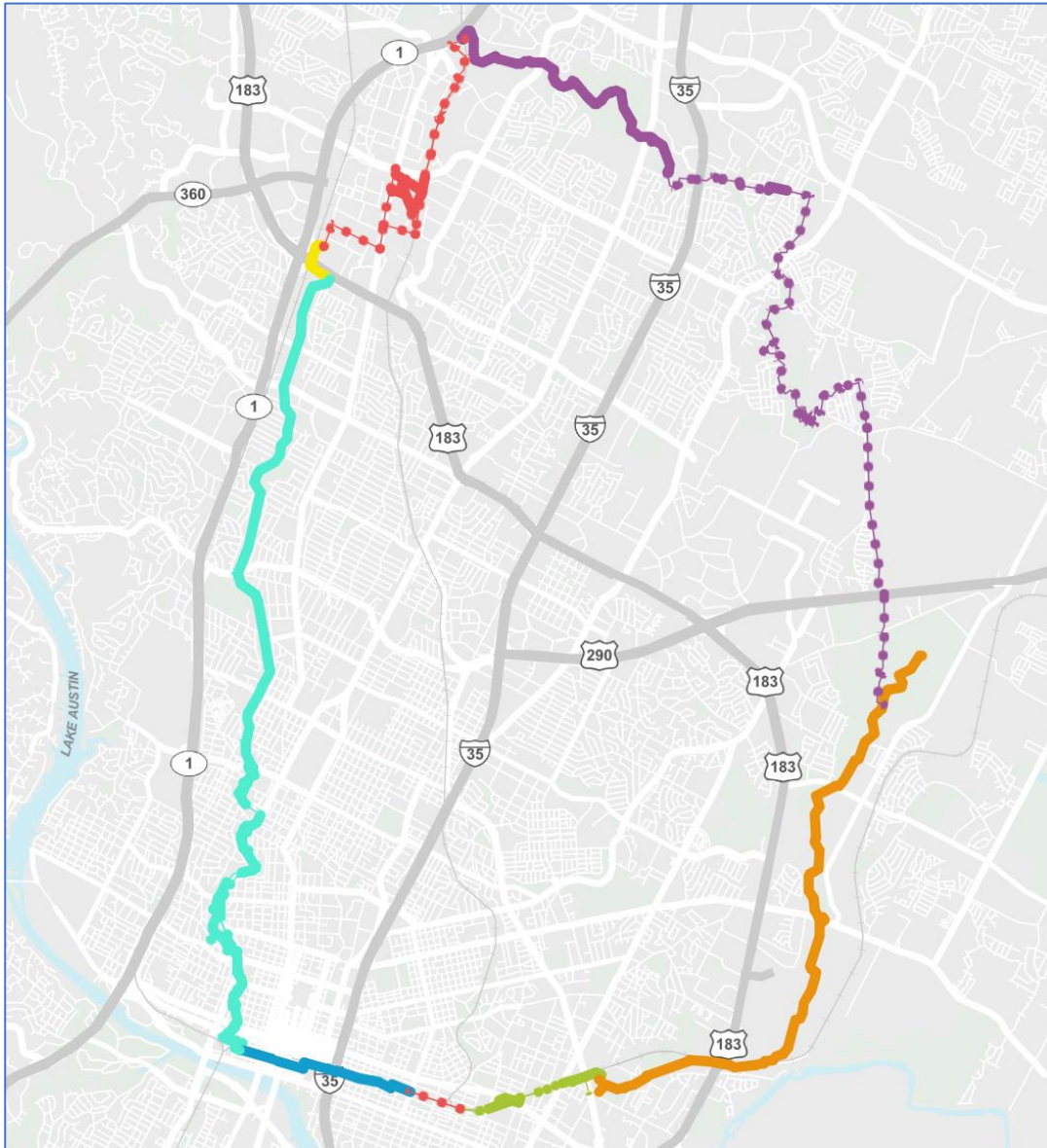
268 miles proposed

- Tier 1: 94 miles
- Tier 2: 78 miles
- Tier 3: 96 miles

2023 Urban Trail Plan Goals

- Complete all Tier 1 trails by 2043
- Opportunistically pursue partnerships to complete Tier 2 and Tier 3 trails
- \$152M of trails in active design/development
- \$60M in construction funding currently available

“The Big Loop”



Map Overview

Big Loop Trail

Proposed

- ● ● MoKan Corridor Trail
- ● ● Northern Walnut Creek Trail
- ● ● Southern Walnut Creek Trail
- ● ● Red Line Trail
- ● ● Shoal Creek Trail

Existing

- ▬ 3rd & 4th St Bikeway
- ▬ MoKan Corridor Trail
- ▬ MoPac Shared Use Path
- ▬ Northern Walnut Creek Trail
- ▬ Southern Walnut Creek Trail
- ▬ Red Line Trail
- ▬ Shoal Creek Trail

Big Loop Segments



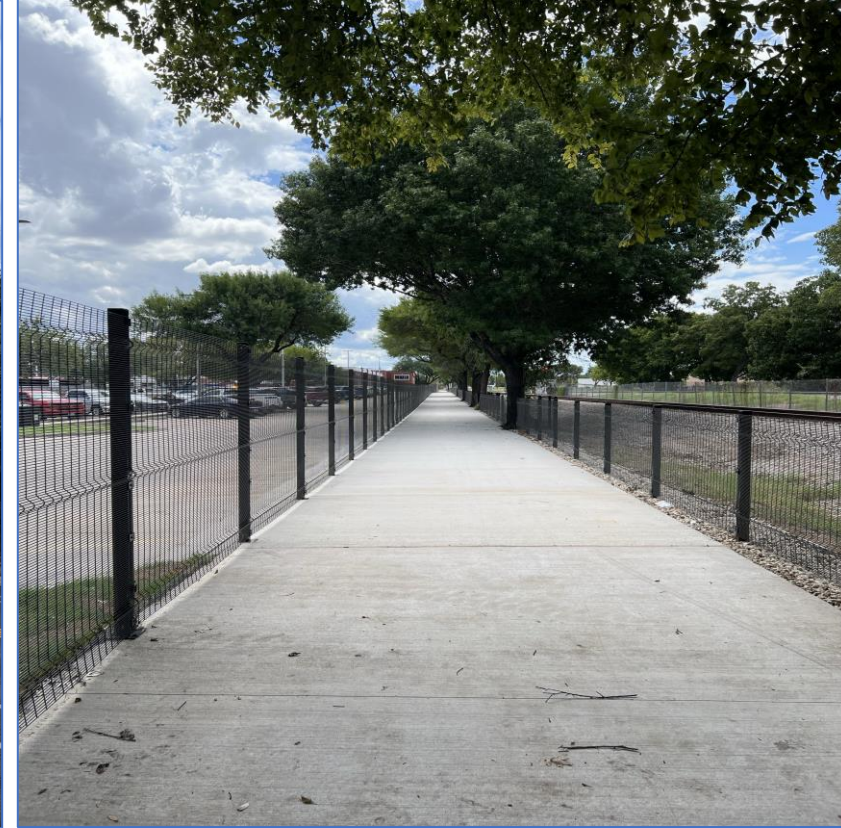
TRANSPORTATION
PUBLIC WORKS



Shoal Creek Trail



Red Line Trail



MoKan Trail

Big Loop Segments



TRANSPORTATION
PUBLIC WORKS



Northern Walnut Creek Trail

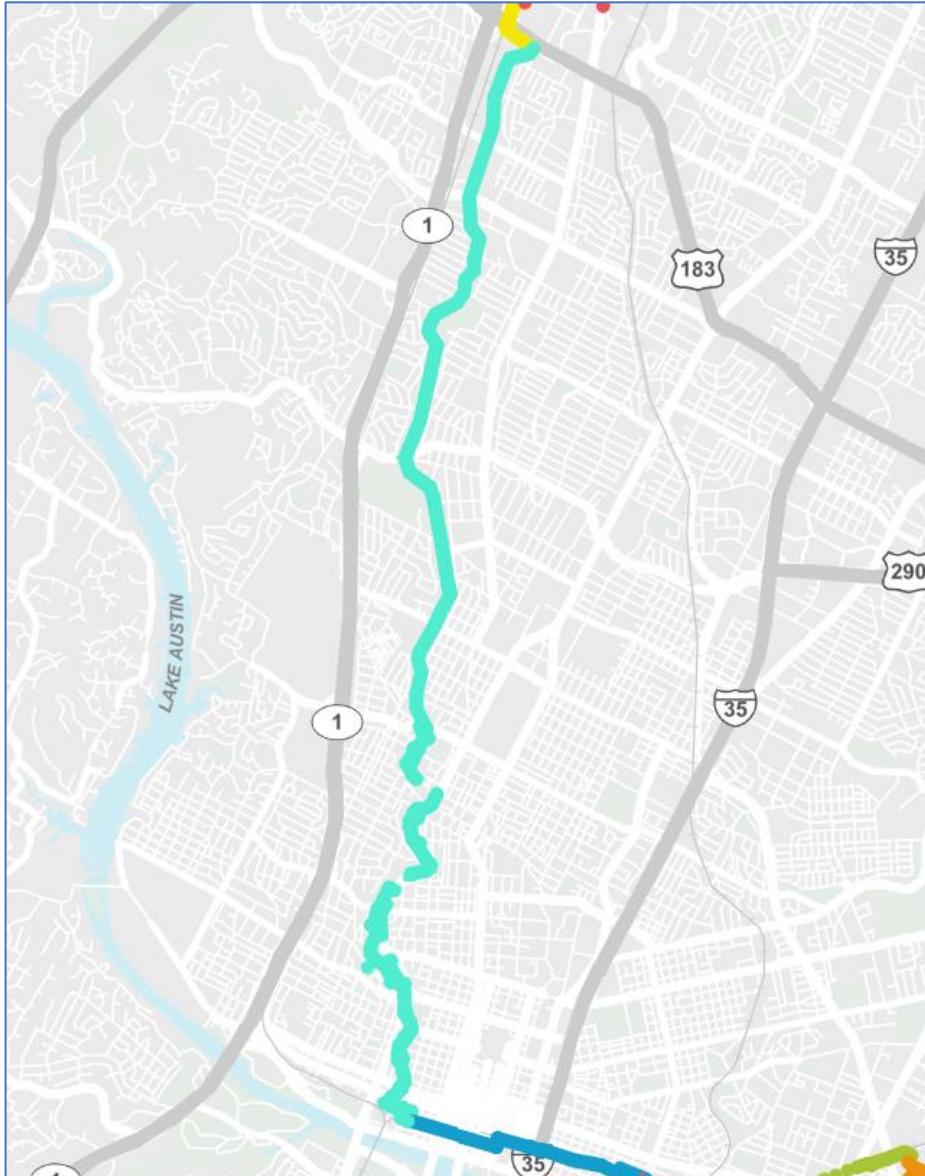


Southern Walnut Creek Trail

Shoal Creek Trail



TRANSPORTATION
PUBLIC WORKS



- Currently working on trail upgrades:
 - Connectivity under 3rd Street Pedestrian Bridge is in planning stage
 - Addition of lighting under Historic 6th Street Bridge is underway
 - Upgrades along Lamar Blvd between 24th and 31st Streets are in design stage
 - Protected facilities under 2222 underpass expected to begin construction spring 2025

Shoal Creek Trail



TRANSPORTATION
PUBLIC WORKS



Near 3rd Street Pedestrian Bridge



Close to South Lamar Boulevard, south of West 29th Street

Shoal Creek Trail



TRANSPORTATION
PUBLIC WORKS



Shoal Creek Boulevard, north of RM 2222

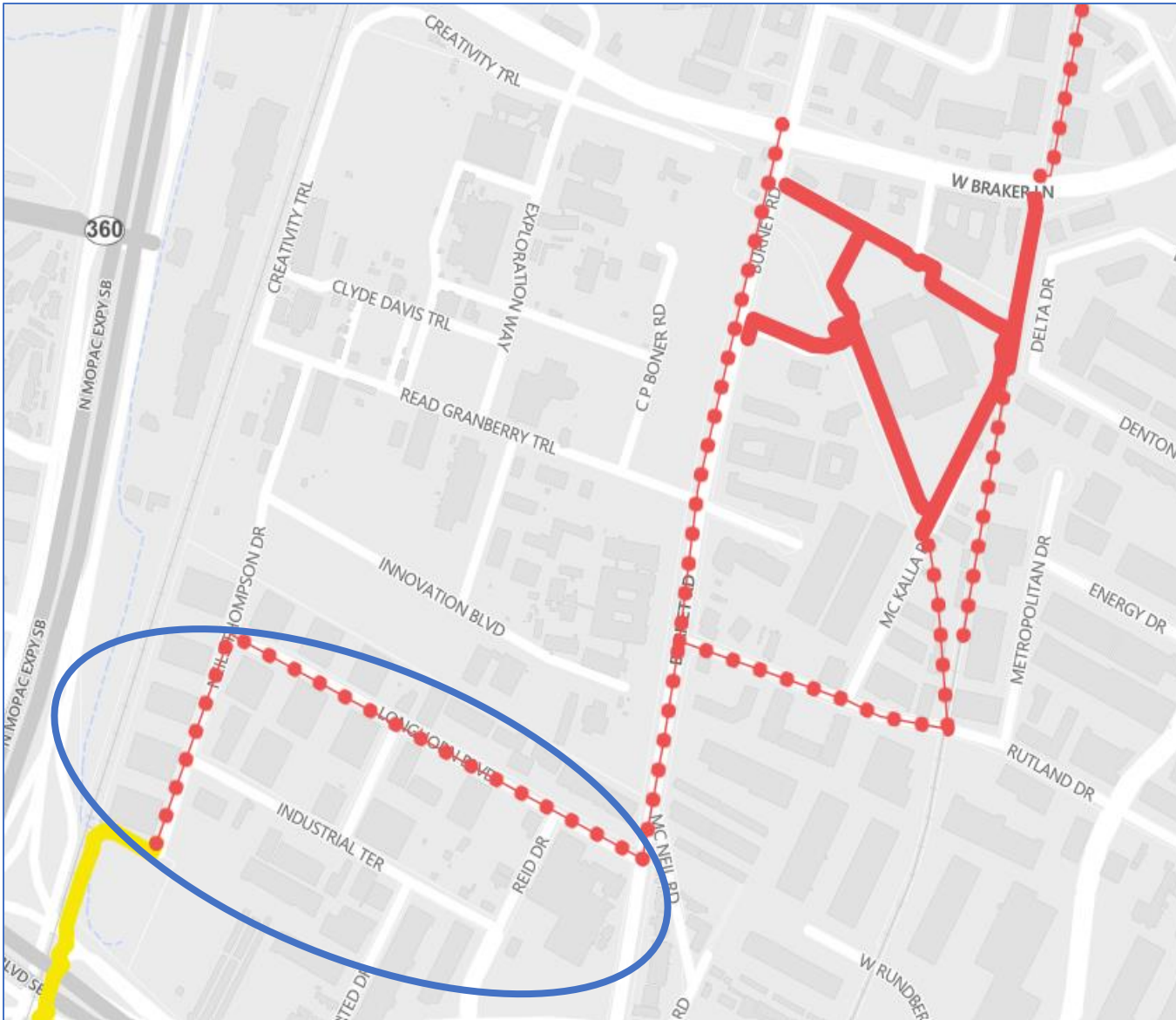


MoPac Shared Use Path

Shoal Creek to Red Line Trail Connector



TRANSPORTATION
PUBLIC WORKS

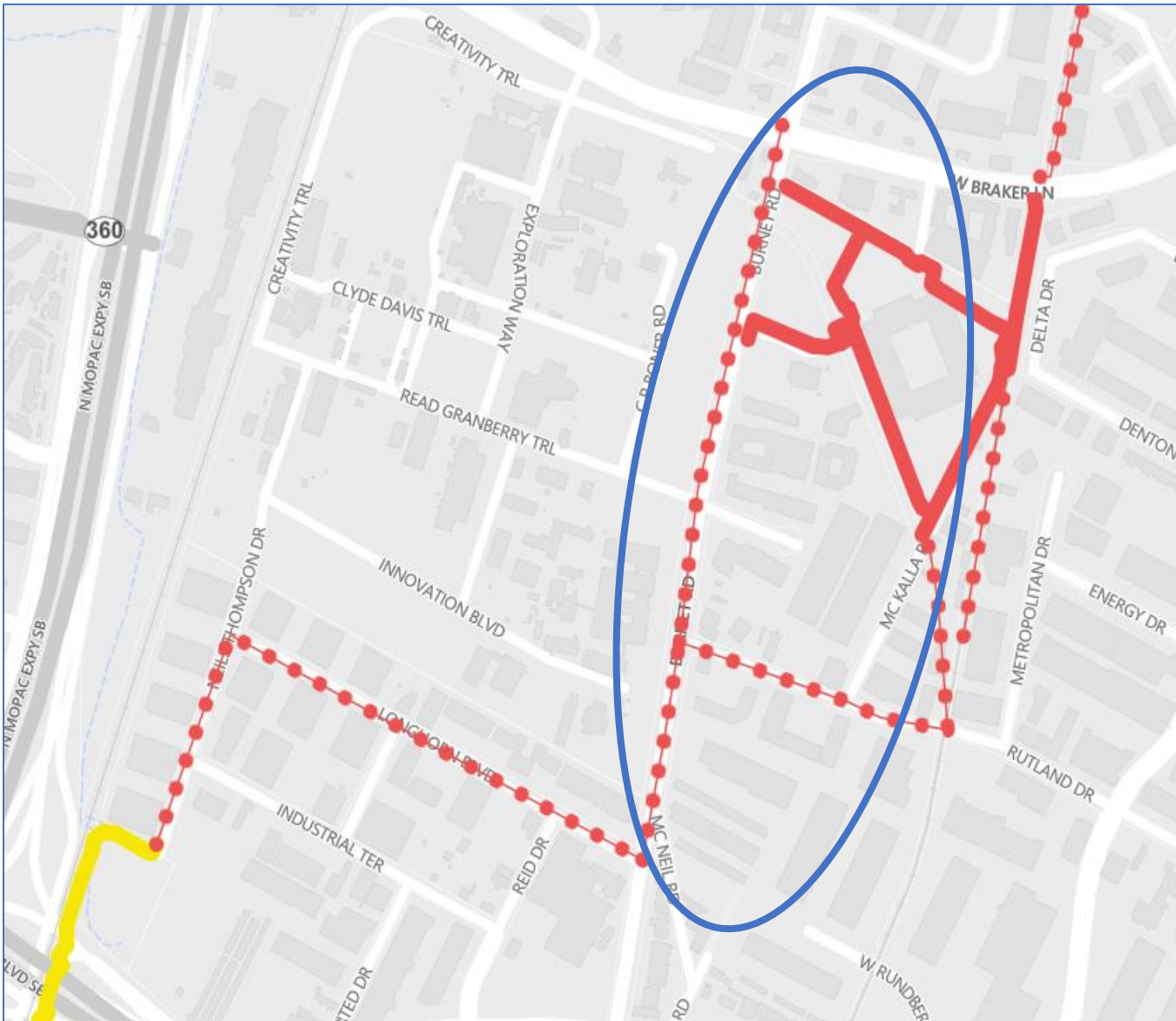


- Phase 1 is funded and construction tentatively scheduled to start late 2024/early 2025
- Phase 1 will tie in at Neils Thompson Drive and end at Longhorn Boulevard and Burnet Road

Shoal Creek to Red Line Trail Connector



TRANSPORTATION
PUBLIC WORKS



- Phase 2 will connect from Phase 1 to Red Line Trail at McKalla Station
- This segment is funded and will be constructed as part of Burnet Road Corridor Project
- Construction anticipated to begin fall 2025

Shoal Creek to Red Line Trail



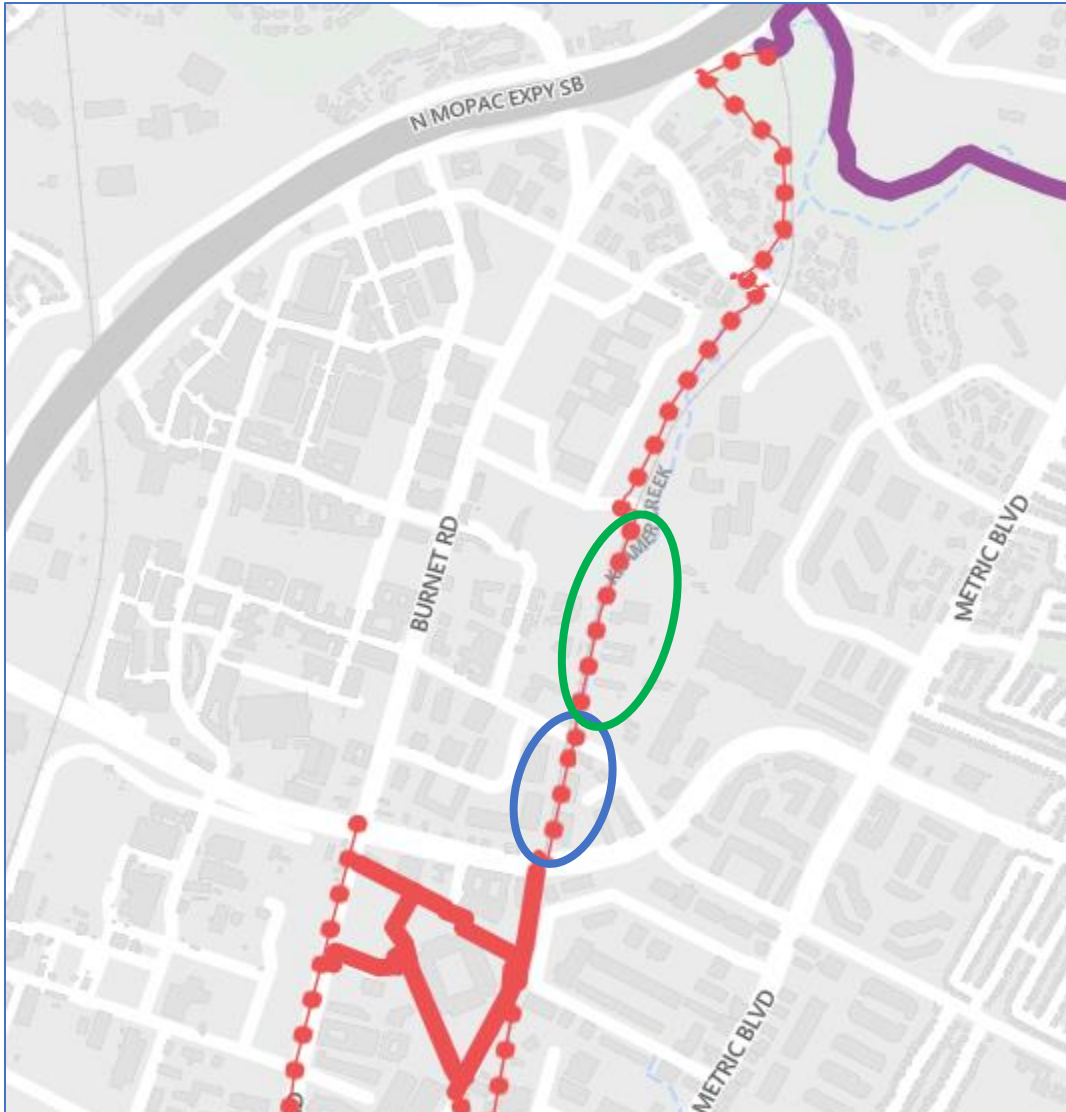
TRANSPORTATION
PUBLIC WORKS



Neils Thompson Drive, looking north toward Longhorn Boulevard



Longhorn Boulevard looking east toward Burnet Road



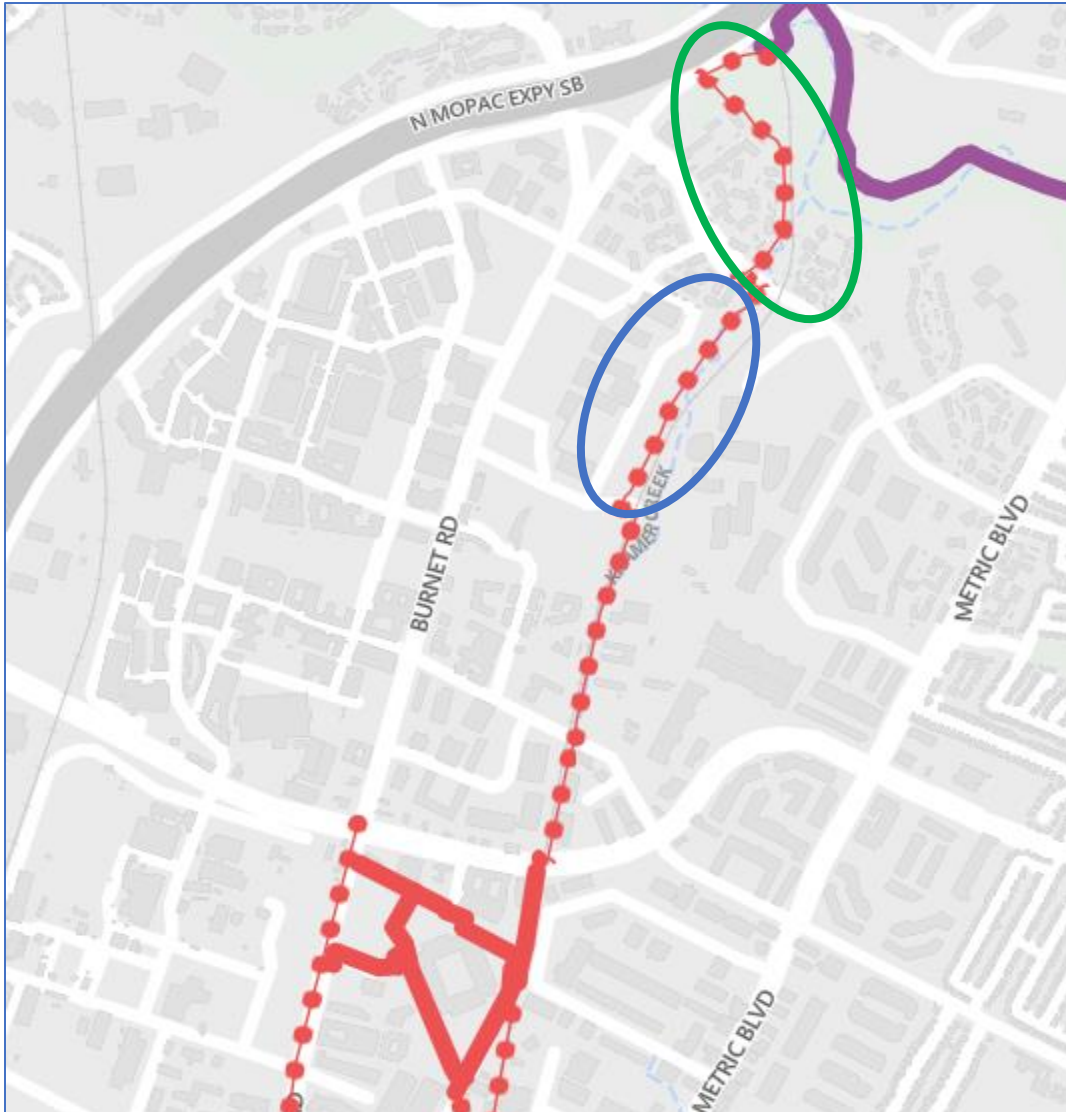
Braker Ln to Northern Walnut Creek Trail (funded)

Phase 1: West Braker to Kramer Lane

- 1/3-mile section with construction expected to start late 2025
- Will connect to McKalla Station and Q2 Stadium

Phase 2: Kramer Lane to IBM Campus

- 1/3-mile section
- Construction has recently started as part of the Burnet Corridor Project



Braker Ln to Northern Walnut Creek Trail (funded)

Phase 3: IBM Campus to Gracy Farms Ln

- 1/2-mile section with construction planned for spring 2026 connecting to the future Broadmoor Station

Phase 4: Gracy Farms Ln to Northern Walnut Creek Trail

- 1/2-mile section with construction tentatively planned for spring 2026
- Will connect to Walnut Creek Trail and SUP on Mopac Frontage Road
- Federal funding request in review

Red Line Trail



TRANSPORTATION
PUBLIC WORKS



Bikeway facilities on Gracy Farms Lane



North of Gracy Farms Lane

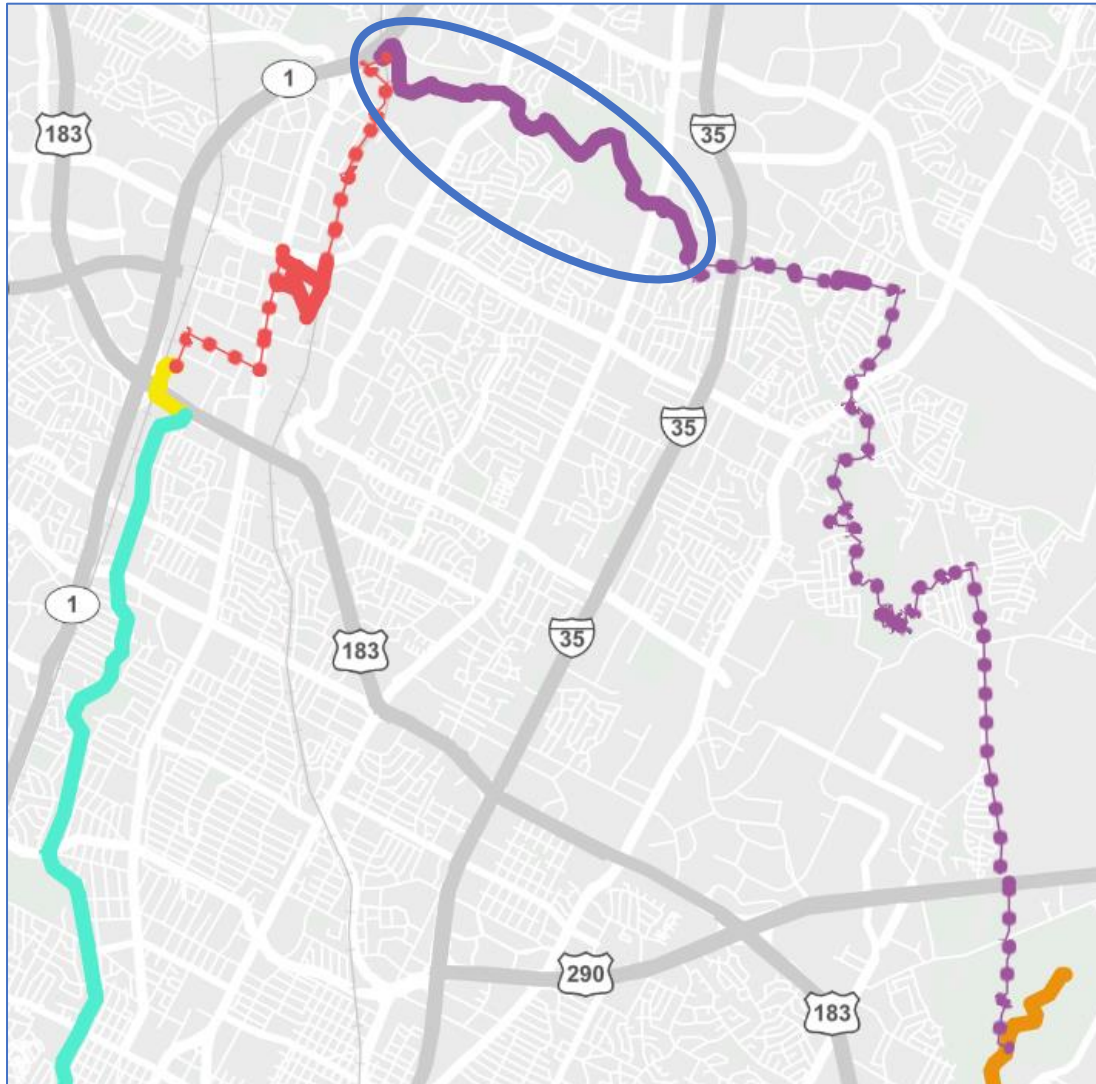


MoPac Shared Use Path

Northern Walnut Creek Trail



TRANSPORTATION
PUBLIC WORKS



Balcones District Park to Oakbrook Drive

- Northern Walnut Creek Trail opened in 2015 and expanded west in 2019 and east in 2023
- This project was completed in partnership between the Urban Trails Program and the Austin Parks and Recreation Department
- This section traverses 4.4 miles

Northern Walnut Creek Trail



TRANSPORTATION
PUBLIC WORKS



Northern Walnut Creek Trailhead – Balcones District Park

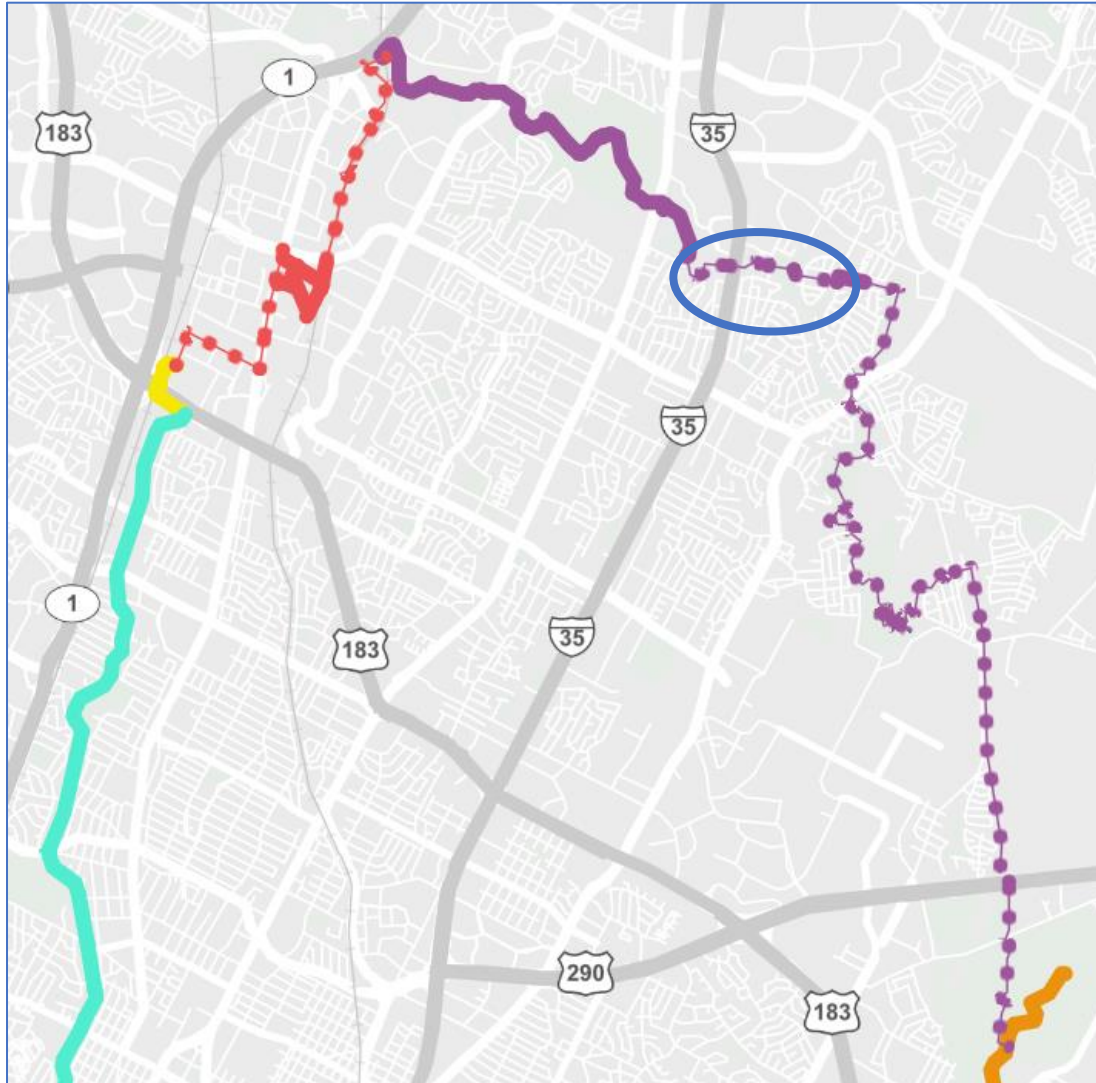


Bridge over Walnut Creek – Walnut Creek Metropolitan Park

Northern Walnut Creek Trail



TRANSPORTATION
PUBLIC WORKS



Section 2B and 3A (funded)

- Current Status: 60% Design
- 100% Design: late spring 2025
- Anticipated Const. Start: summer 2025
- Section 2B construction cost estimate: \$3.2M (federal funding request in review)
- Section 3A construction cost estimate: \$4M (funded)

Northern Walnut Creek Trail



TRANSPORTATION
PUBLIC WORKS



Section 2B proposed alignment – crossing under IH35

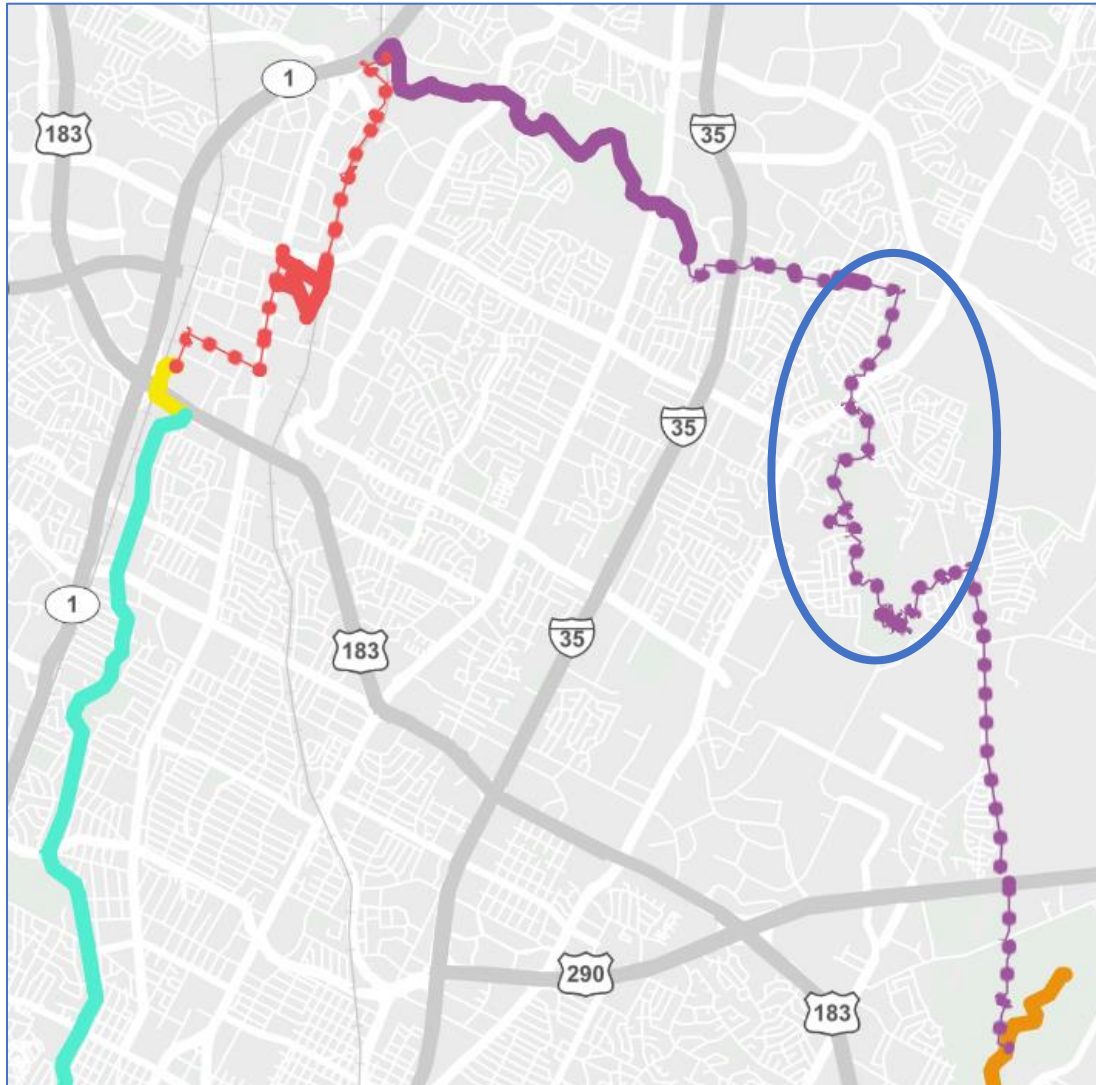


Section 3A – Rendering of pedestrian bridge in LCRA easement

Northern Walnut Creek Trail



TRANSPORTATION
PUBLIC WORKS



Section 3B (unfunded)

- Current Status: Feasibility Review
- Initial Design expected to begin by winter 2024
- Bike lane improvements on Shropshire and Braker Lane will provide connectivity from 3A North to the north end of 3C

Northern Walnut Creek Trail



TRANSPORTATION
PUBLIC WORKS



Section 3B Copperfield – alignment along Copperfield Nature Trail

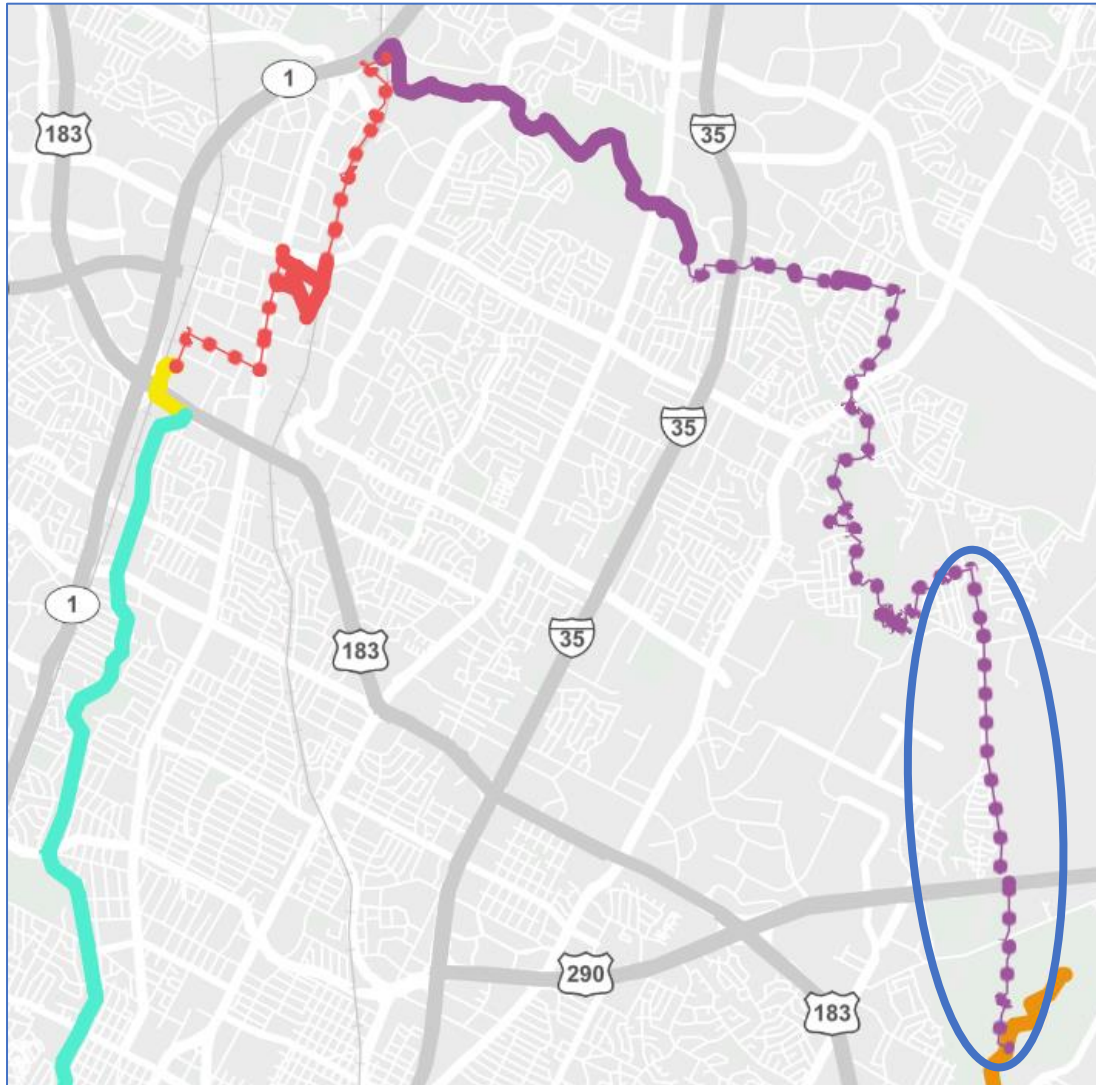


Section 3B Pioneer proposed trail alignment – Walnut Creek easement

Northern Walnut Creek Trail



TRANSPORTATION
PUBLIC WORKS



Section 3A South and 3C (funded)

- Current Status: Feasibility Review
- Early Estimated Cost: \$5.8 Million
- Partially federally funded project in coordination with Congressman Doggett's Office
- The segments are moving together with the intention to bid as a single project.
- Construction is anticipated to take 2 years

Northern Walnut Creek Trail



TRANSPORTATION
PUBLIC WORKS



Section 3C proposed trail alignment – crossing under HWY 290

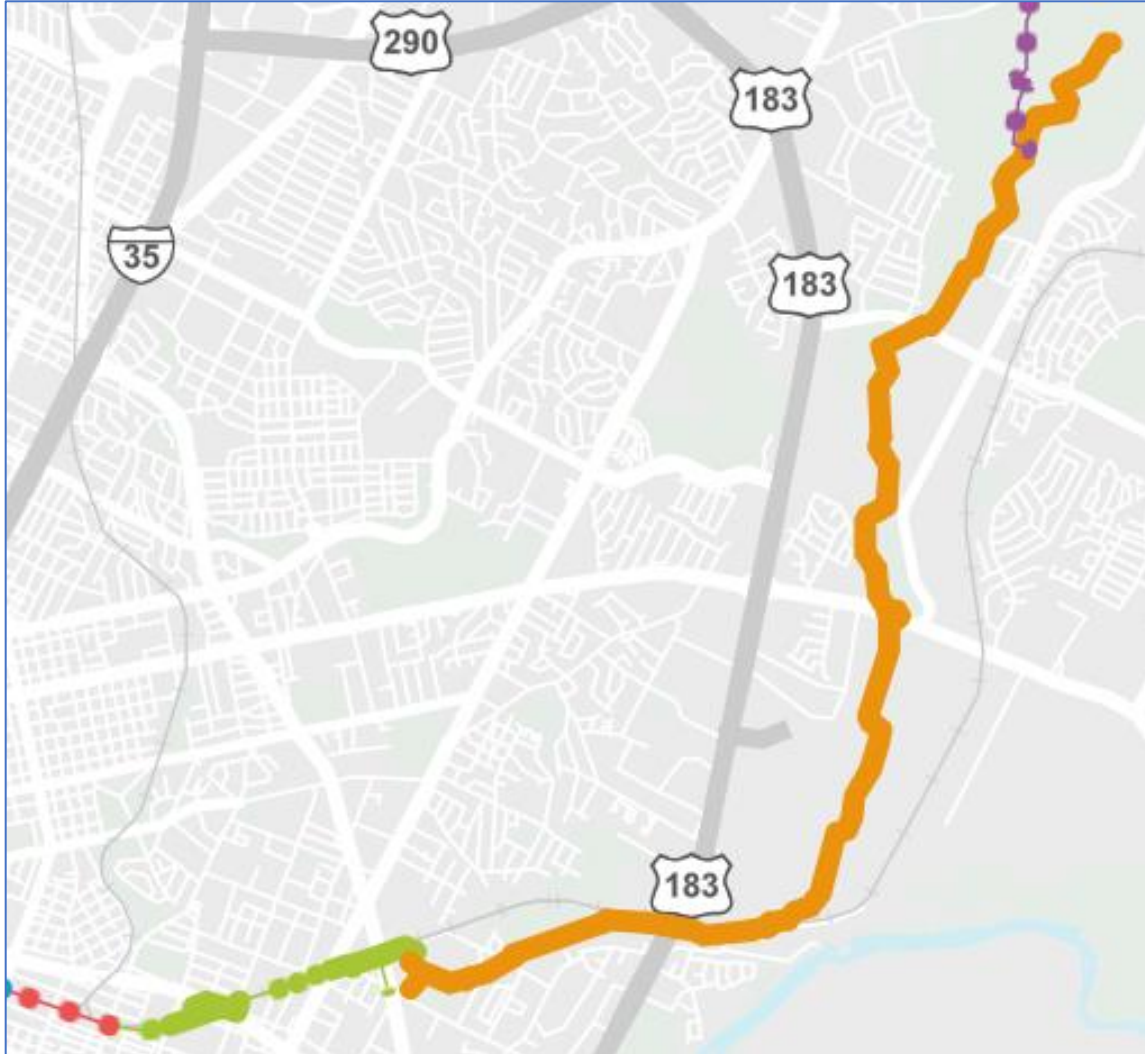


Section 3A South – Rendering of proposed tunnel under Old Manor Rd

Southern Walnut Creek Trail



TRANSPORTATION
PUBLIC WORKS



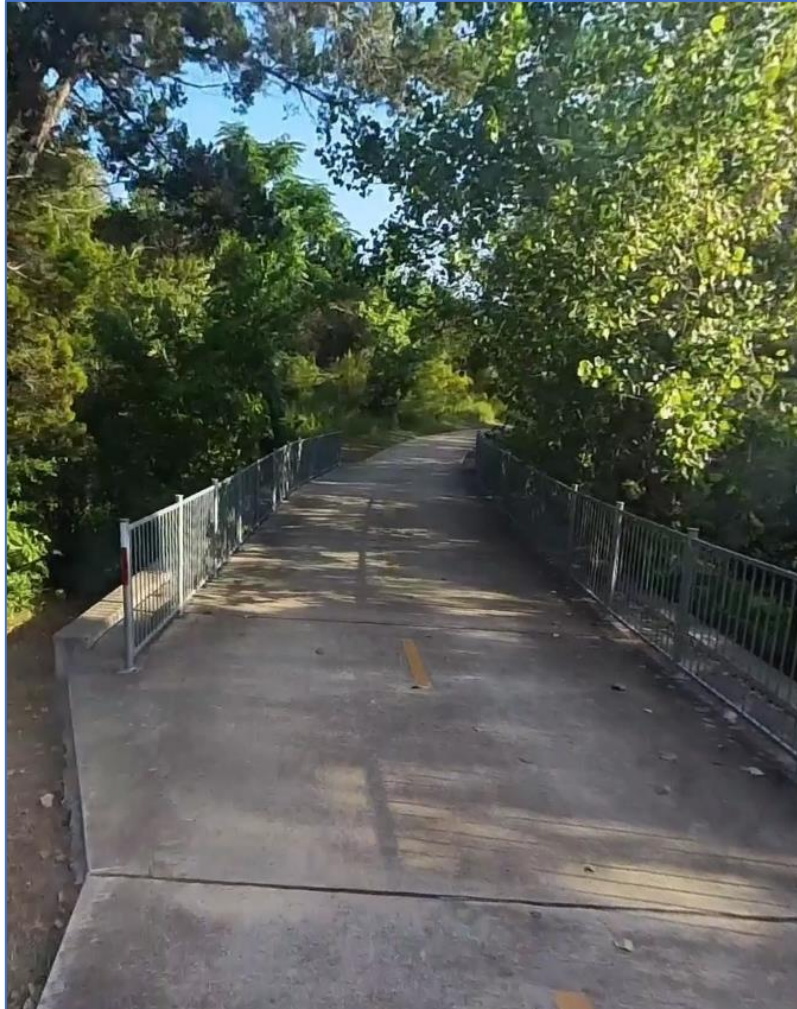
From Daffan Lane to Govalle Park

- Opened in 2014
- Austin's First Urban Trail
- Trail Length: 8.7 miles
- Cost was approximately \$10.5M

Southern Walnut Creek Trail



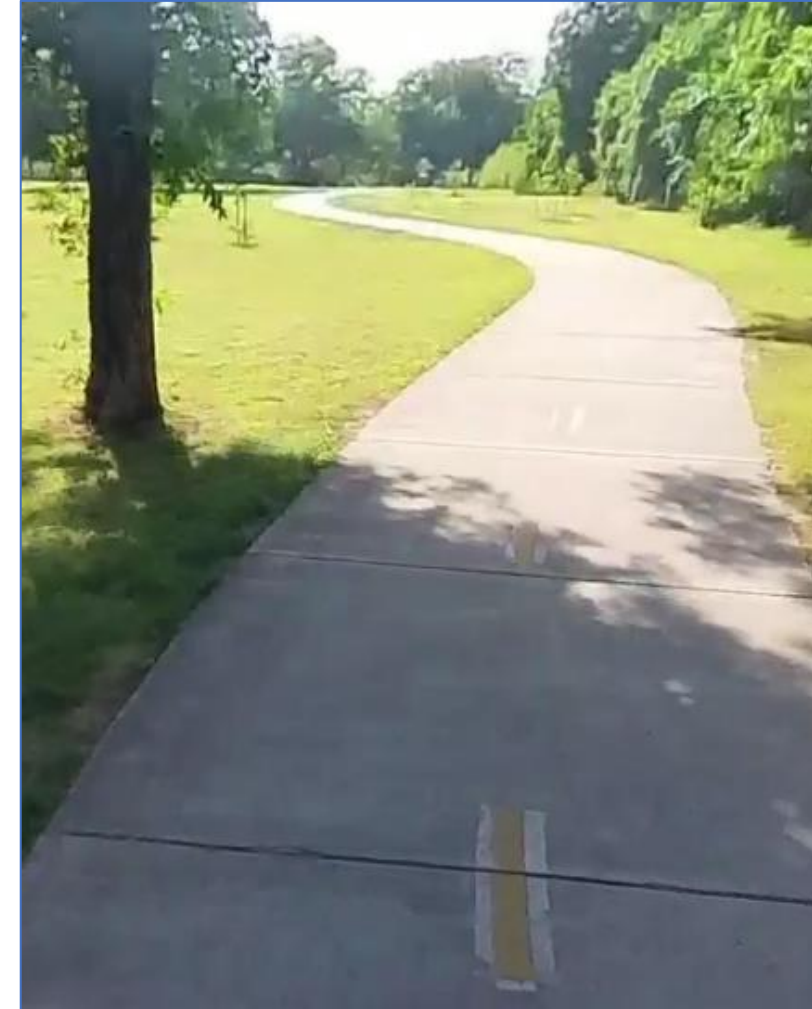
TRANSPORTATION
PUBLIC WORKS



Southern Walnut Creek Greenbelt



MoKan Rail Crossing at Delwau Lane



Govalle Neighborhood Park

MoKan Trail



TRANSPORTATION
PUBLIC WORKS



Adjacent to Cap Metro Depot heading under 7th Street Bridge,
Heading east from Pleasant Valley toward Gonzales Street



From Gonzales Street looking west toward Pleasant Valley

MoKan Trail



TRANSPORTATION
PUBLIC WORKS



Heading west toward Pleasant Valley adjacent to Cap Metro Depot

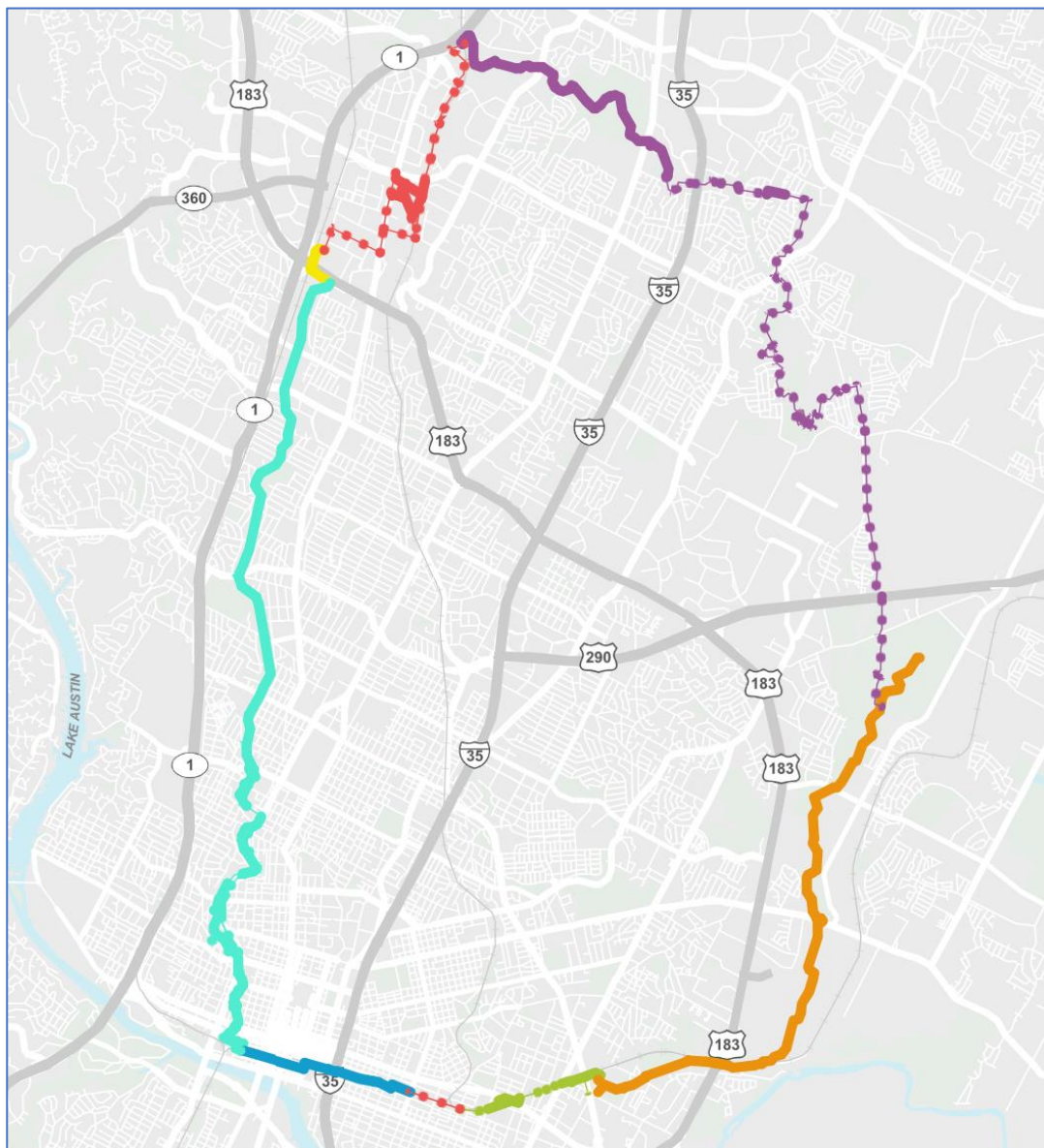


On Gonzales Street heading toward Tillery intersection

“The Big Loop”



TRANSPORTATION
PUBLIC WORKS



Map Overview

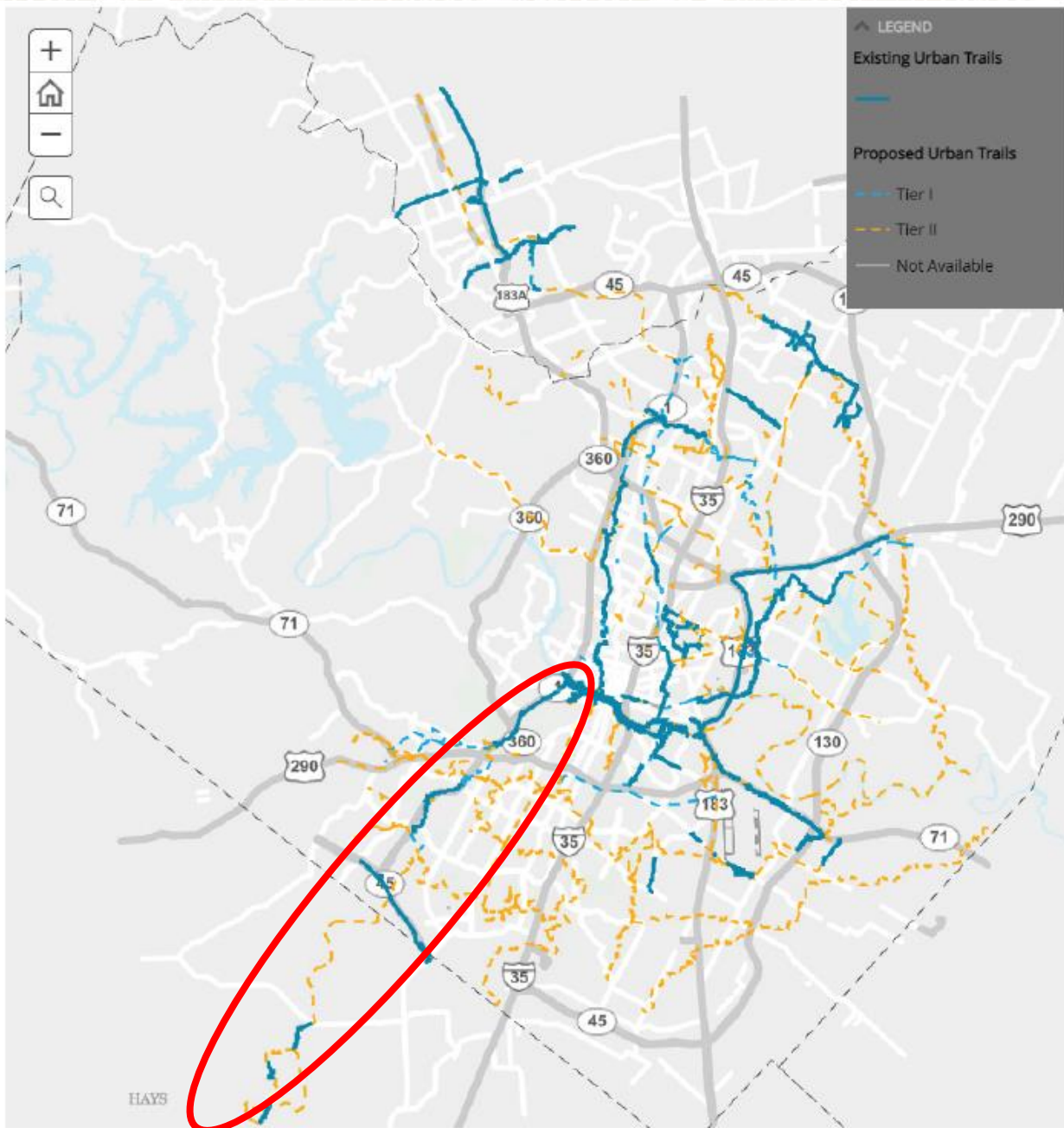
Big Loop Trail

Proposed

- ● ● MoKan Corridor Trail
- ● ● Northern Walnut Creek Trail
- ● ● Southern Walnut Creek Trail
- ● ● Red Line Trail
- ● ● Shoal Creek Trail

Existing

- ▬ 3rd & 4th St Bikeway
- ▬ MoKan Corridor Trail
- ▬ MoPac Shared Use Path
- ▬ Northern Walnut Creek Trail
- ▬ Southern Walnut Creek Trail
- ▬ Red Line Trail
- ▬ Shoal Creek Trail



Connecting to the Great Springs Project



Figure 4-1: Screenshot of City of Austin online map of urban trails as of plan adoption. Note: some trails on this map are shared use paths that are built and managed by other agencies.