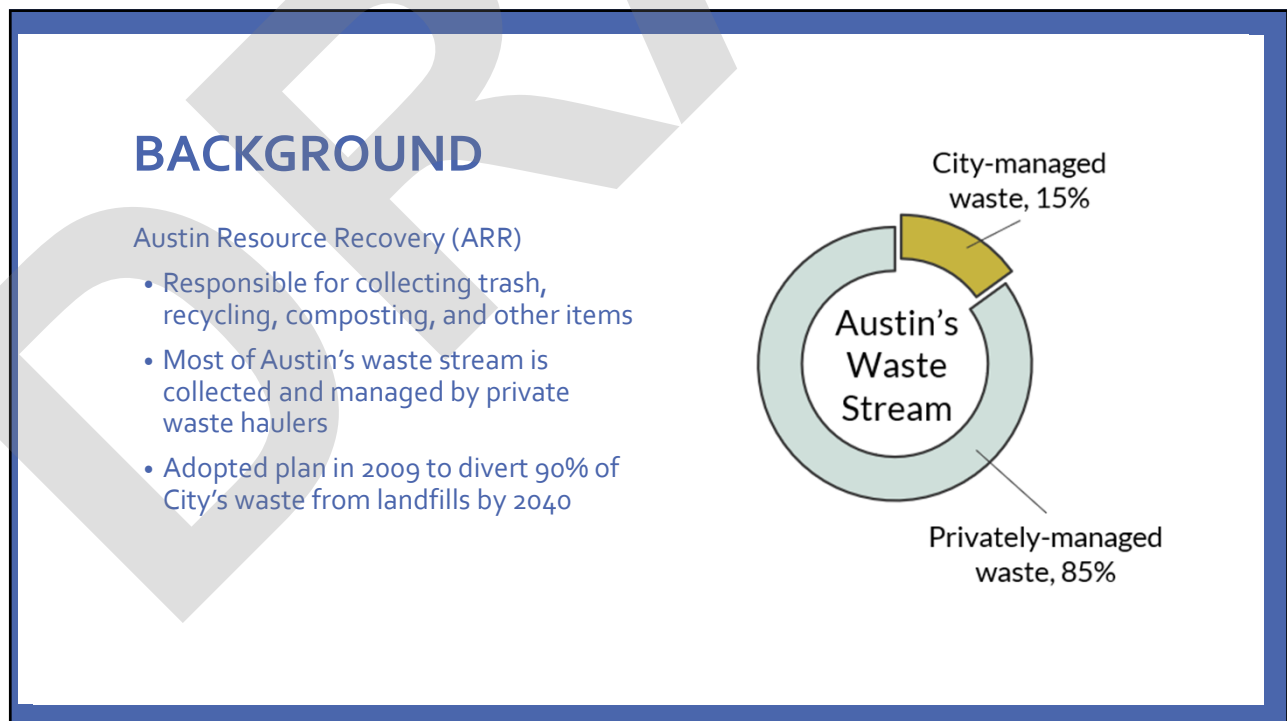
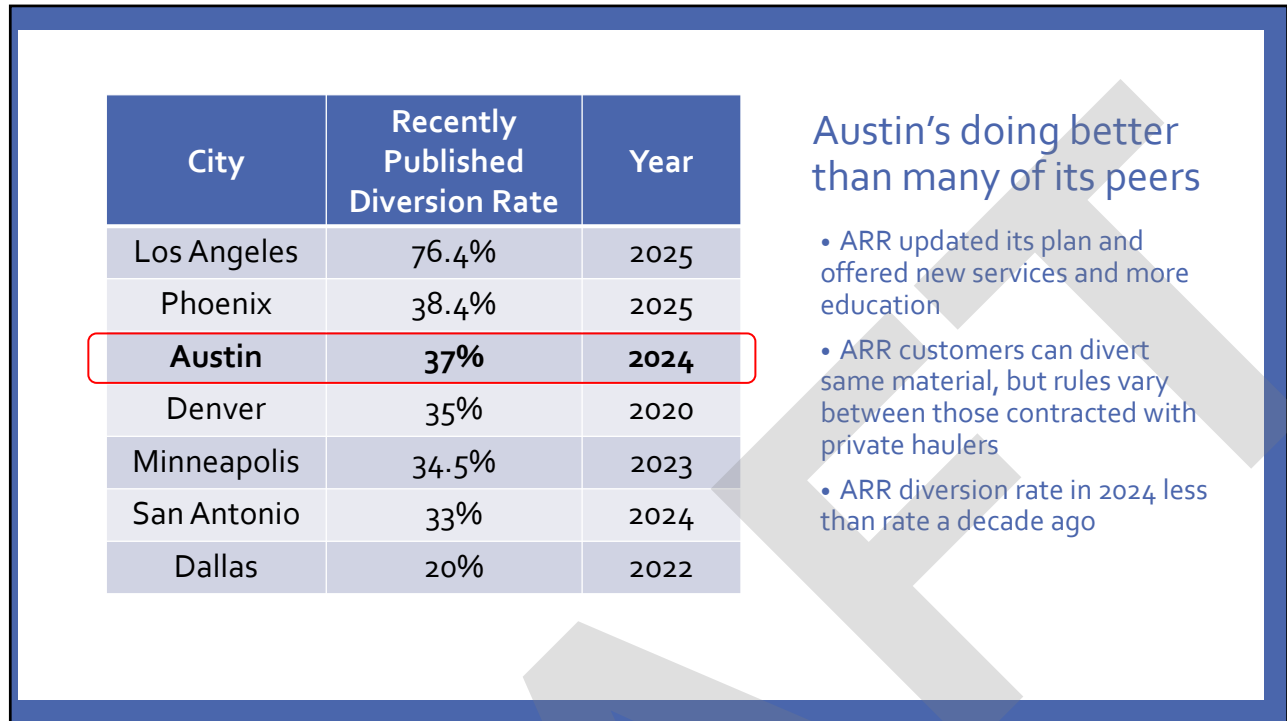




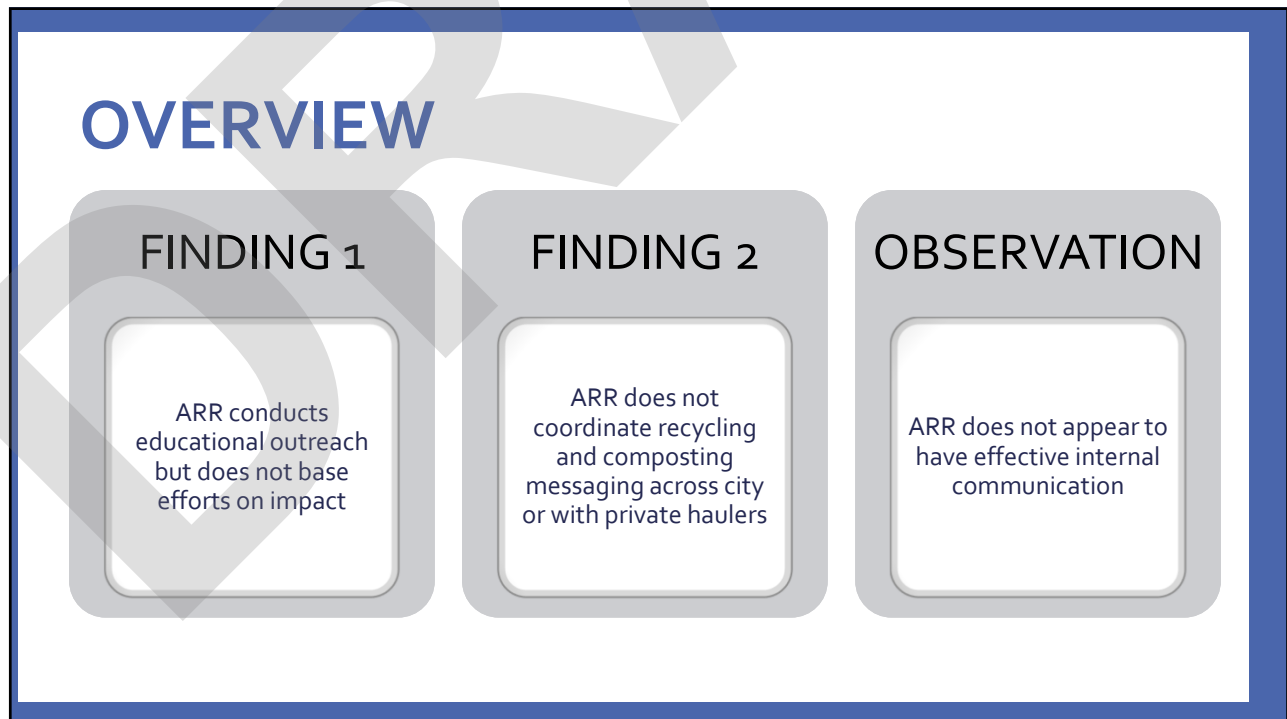
1



2



3



4

FINDING 1

ARR conducts educational outreach but does not base efforts on impact.

- Conducting educational outreach to the community
- Not consistently prioritizing roughly 90 projects and campaigns
- Some educational efforts lack measurable goals or ways to measure impact



5


FINDING 2

ARR does not coordinate recycling and composting messaging across the City or with private haulers.

- Inconsistent signs and bins across City
- Inconsistent coordination education with private waste haulers
- Inconsistent guidance and education shared by private waste haulers and ARR




6



THESE WASTE BINS FOLLOW ZERO WASTE AT CITY FACILITIES GUIDELINES

7



Green-colored bin featuring a recycling symbol



Red-colored bin featuring a recycling symbol

INCONSISTENT MESSAGING WITHIN THE SAME CITY FACILITY

8



Recycling and trash bins at
Roy G. Guerrero Colorado
River Park



Recycling and trash bins at
City Hall by Council Chambers



Recycling and trash bins at
Branch Park




WASTE BINS VARY IN DESIGN ACROSS THE CITY

9



**LACK OF ACCESS TO
RECYCLING AND
COMPOSTING BINS
MAY UNDERMINE THE
CITY'S WASTE
DIVERSION EFFORTS**

10

Item	Austin Guidance	Dallas Guidance	Denver Guidance	Los Angeles Guidance	San Antonio Guidance
Empty Paint Cans 	Trash	Recycle	Recycle	Recycle	Household hazardous waste
Wire Hangers 	Reuse	Trash	Trash	Recycle	Trash
Batteries 	Household hazardous waste	Household hazardous waste	Household hazardous waste	Trash	Household hazardous waste

CITIES HAVE DIFFERENT RULES FOR HOW TO DISPOSE OF CERTAIN ITEMS

11

OBSERVATION

ARR does not appear to have effective internal communication.

- Limited ability to prioritize work
- Efforts reactive to others
- Staff excluded from planning discussions



12

RECOMMENDATIONS

01

- Evaluate projects and priority levels
- Set measurable goals, and
- Adjust to make progress towards Zero Waste Goal

02

- Work with other departments to standardized messaging
- Add educational fees to contracts
- Coordinate messaging with private waste haulers

13



QUESTIONS?

14



15



16

