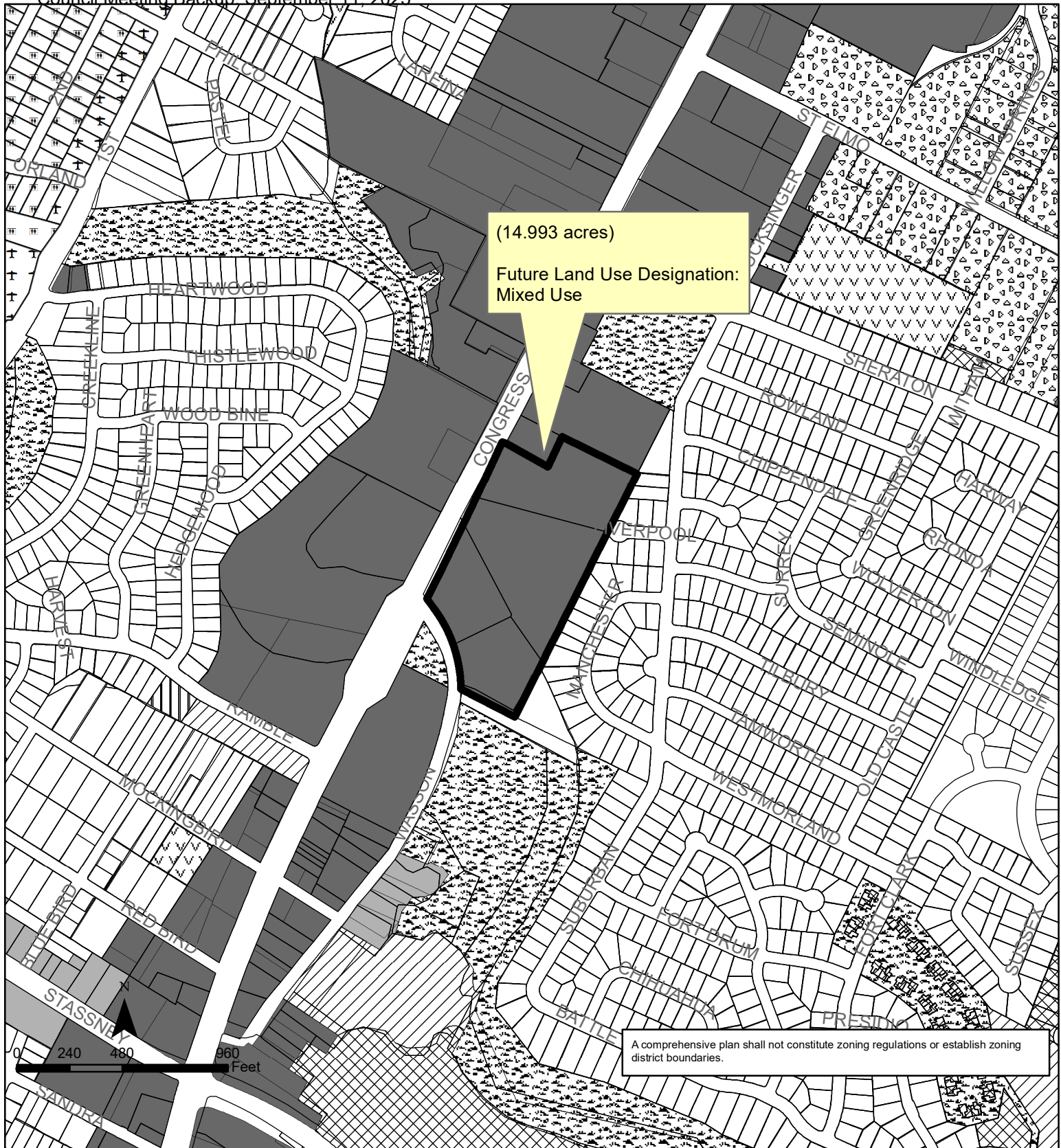


COA Law Department



## Exhibit A South Congress Combined Neighborhood Planning Area NPA-2025-0020.03





This product is for informational purposes and may not have been prepared for or be suitable for legal, engineering, or surveying purposes. It does not represent an on-the-ground survey and represents only the approximate relative location of property boundaries.

This product has been produced by the Planning Department for the sole purpose of geographic reference. No warranty is made by the City of Austin regarding specific accuracy or completeness.



City of Austin  
Planning Department  
Created on 3/25/2025, by: meekss

### Future Land Use

	Subject Tract		Industry
	Neighborhood Transition		Mixed Use
	Residential Core		Mixed Use/Office
	Civic		Multi-Family
	Commercial		Recreation & Open Space
	Higher-Density Single-Family		Single-Family