

Austin Transfer Station

Climate, Water, Environment, and
Parks Committee

August 27, 2025



What Is A Transfer Station?

- A facility where solid waste is temporarily collected, sorted, and consolidated before being transferred to larger vehicles for transportation to a landfill, recycling facility, or other final disposal site.



Transfer Station Benefits

- Reduces GHG emissions
- Supports Electrifying Fleet
- Provides public disposal opportunities & reduces blight
- Expands diversion & disposal opportunities
- Increases storm readiness & operations resiliency
- Reduces ARR & City operating expenses
- Supports City's Climate Equity Plan
- Supports ARR Comprehensive Plan

Financial Analysis Factors

Consultant reviewed several categories of expenses to evaluate benefit of building a transfer station opposed to direct hauling to disposal facility.

Metric	Measurement
Routes	Number of routes eliminated
Personnel	Reduction in staffing or overtime
Vehicles	Savings on trucks, fuel, and tolls
Construction	Capital costs to develop facility including fixed equipment
Operating Costs	Costs to operate the facility including all personnel costs

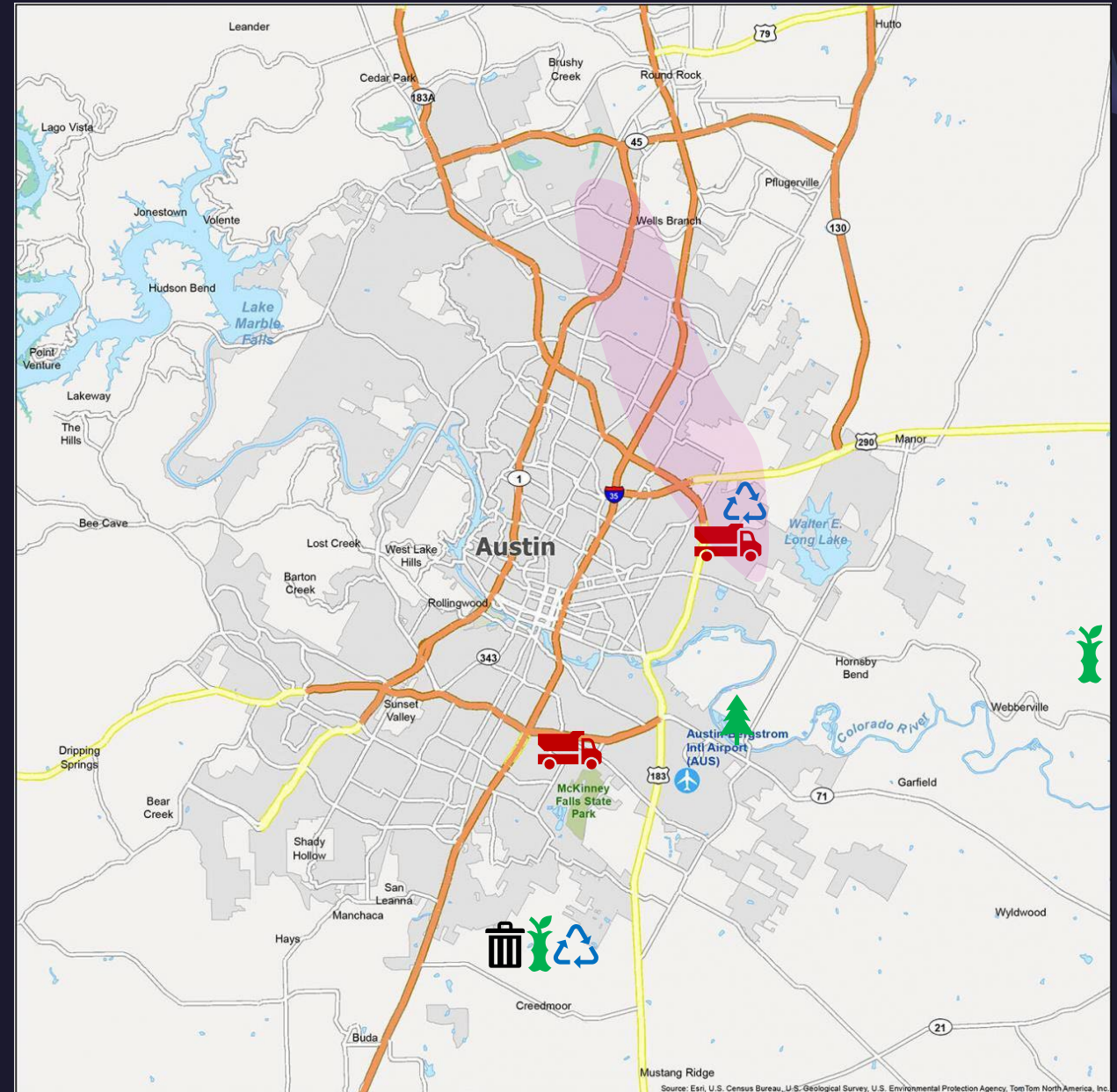
Site Evaluation Factors

- Site Conditions
- Potential for Permitting Concerns
- Utility Access
- Value of Land Parcel
- Ease of Vehicle Accessibility
- Operational Cost Efficiency
- Impact on Surrounding Community
- Environmental Justice
- Compatibility with CAPCOG Plan
- Collection Rate Efficiency

The financial viability of a transfer station is largely determined by its proximity to both the new dispatch location at the Northeast Service Center (NESC) and the collection service areas.... Sites...east of I-35 in the north-central and northeast areas are likely to offer stronger financial returns compared to other parts of the City.”

- Consultant's Report

- | | | | |
|--|------------------|---|--------------------|
|  | Recycle Facility |  | ARR Service Center |
|  | Waste Facility |  | Compost Facility |
|  | Brush Facility |  | Sites Evaluated |



City of Austin
Waters, Environment and Parks Committee Meeting Backup August 11, 2025

Seattle North Transfer Station

File ID: 25-1780



Financial Results

- Constructing and operating a transfer station would result in an annual cost of approximately \$20,000 - \$970,000 compared to direct hauling waste prior to accounting for additional revenue from private (non-City) haulers
- Breakeven with acceptance of private hauler waste



Next Steps



Questions?

Richard McHale

Director – Austin Resource Recovery

512-974-4301

Richard.McHale@austintexas.gov

www.austinrecycles.com

