

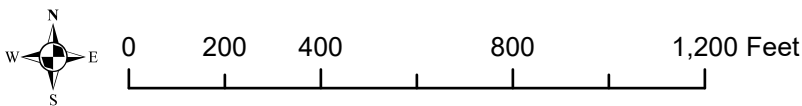
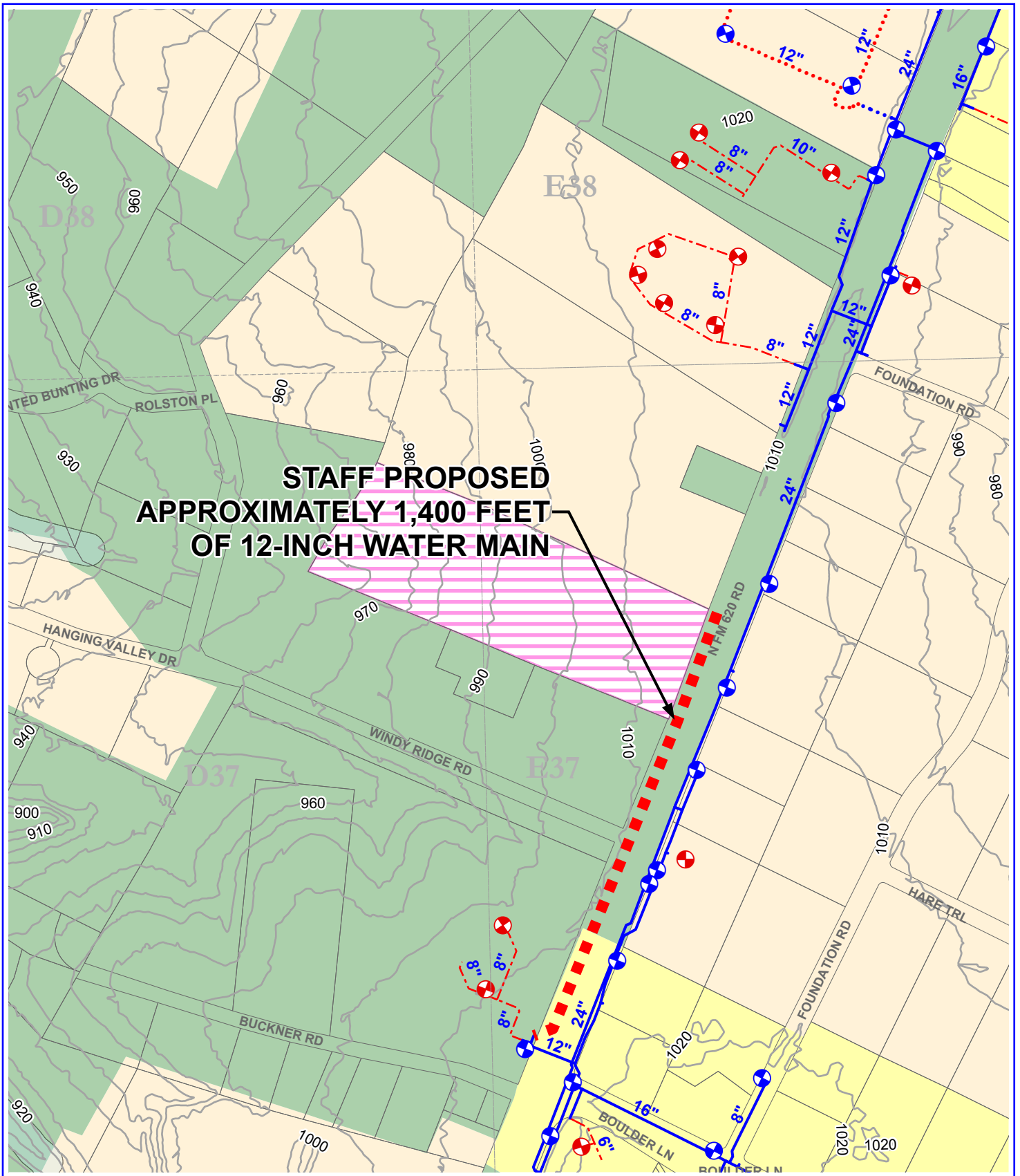
- Subject Tract
- 2-Mile ETJ
- 100-Year FEMA Floodplain
- Limited-Purpose City Limit
- Critical Water Quality Zone
- Unincorporated Travis County
- Full-Purpose City Limit

W. S.E.R. Name McLemore Tract Multifamily
W. S.E.R. Number: 6139
Option 1

Utility Development Services Plotted 4/7/2025

DRAFT

This product is for informational purposes and may not have been prepared for or be suitable for legal, engineering, or surveying purposes. It does not represent an on-the-ground survey and represents only the approximate relative location of the property boundaries. This product has been produced by the City of Austin for the sole purpose of geographic reference. No warranty is made by the City of Austin regarding specific accuracy or completeness.



- Subject Tract
- 2-Mile ETJ
- 100-Year FEMA Floodplain
- Limited-Purpose City Limit
- Critical Water Quality Zone
- Unincorporated Travis County
- Full-Purpose City Limit

W. S.E.R. Name McLemore Tract Multifamily
W. S.E.R. Number: 6139
Option 2

Utility Development Services Plotted 4/7/2025

Page 2 of 2

DRAFT

This product is for informational purposes and may not have been prepared for or be suitable for legal, engineering, or surveying purposes. It does not represent an on-the-ground survey and represents only the approximate relative location of the property boundaries. This product has been produced by the City of Austin for the sole purpose of geographic reference. No warranty is made by the City of Austin regarding specific accuracy or completeness.