



## Chapter 26 Application

# Capital Express-Lady Bird Lake

---

David Tomczyszyn, Vice President, Electric System Engineering and Technical Services

Mac Kammerer, Public Involvement Manager

April 23, 2026

© Austin Energy

# Agenda



Project Summary



Project Location



Alternatives Considered



Ch. 26 Requirements



Stakeholder Engagement



Questions

# Project Summary

- Austin Energy is required to reroute an existing transmission line to accommodate TxDOT's expansion of I-35.
- Transmission circuit 1015 is a critical element of Austin Energy's electric system, ensuring reliable service for tens of thousands of customers.
- Structure 13, an existing transmission structure located on park property, will remain where it is. Two additional structures (structures 14 and 15) will be placed along the transmission alignment.
- Structure 14 will fall within Park property. Structure 15 will be placed in the road right-of-way outside of Park boundaries.

# Existing Transmission Line Alignment

**Brown Lines** = Existing CITY ROW

---

**Blue Line** = New TxDOT ROW

---

**Magenta Line** = Existing Austin Energy Circuit (CKT)1015 Route

---



# Alternatives Considered

---

# Evaluated Reroute Option 1

**Green Lines** = Circuit Reroute Option Not Selected

## Option not feasible:

- Does not meet NESC safety code
- Impacts critical root zones
- Greater impacts to parkland, including larger poles and more required easements
- Difficult to maintain I-35 crossing



# Evaluated Reroute Option 2

**Green Lines** = Circuit Reroute Option Not Selected

---

## Option not feasible:

- Does not meet NESC safety code
- Impacts critical root zones
- Difficult to maintain I-35 crossing
- Congested spotting constraints



# Required Reroute



# Easement Footprint on Park Property



- **Green Hatch (TCAD No. 187333):** Approximately 14,280 Sq. Ft.
- **Magenta Cross Hatch (TCAD No. 187327):** Approximately 1,088 Sq. Ft.
- **LOC = Limits of Construction**

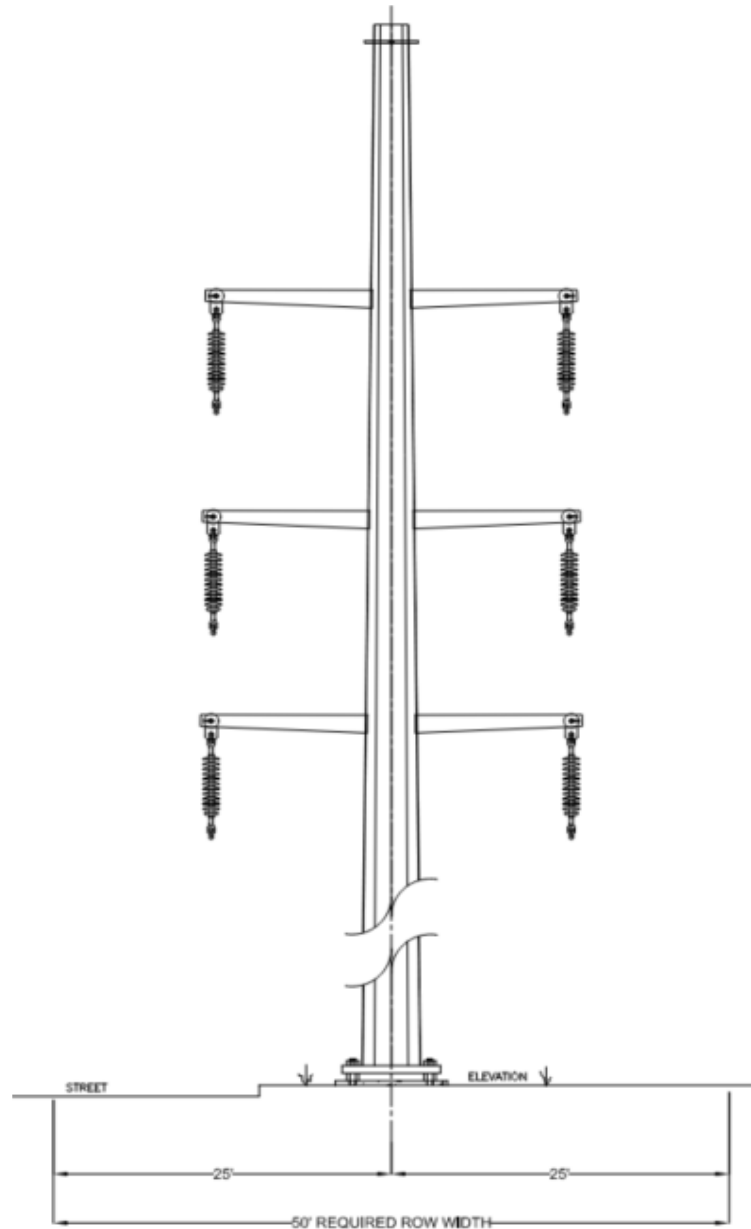
# Minimizing Parkland Impacts

---

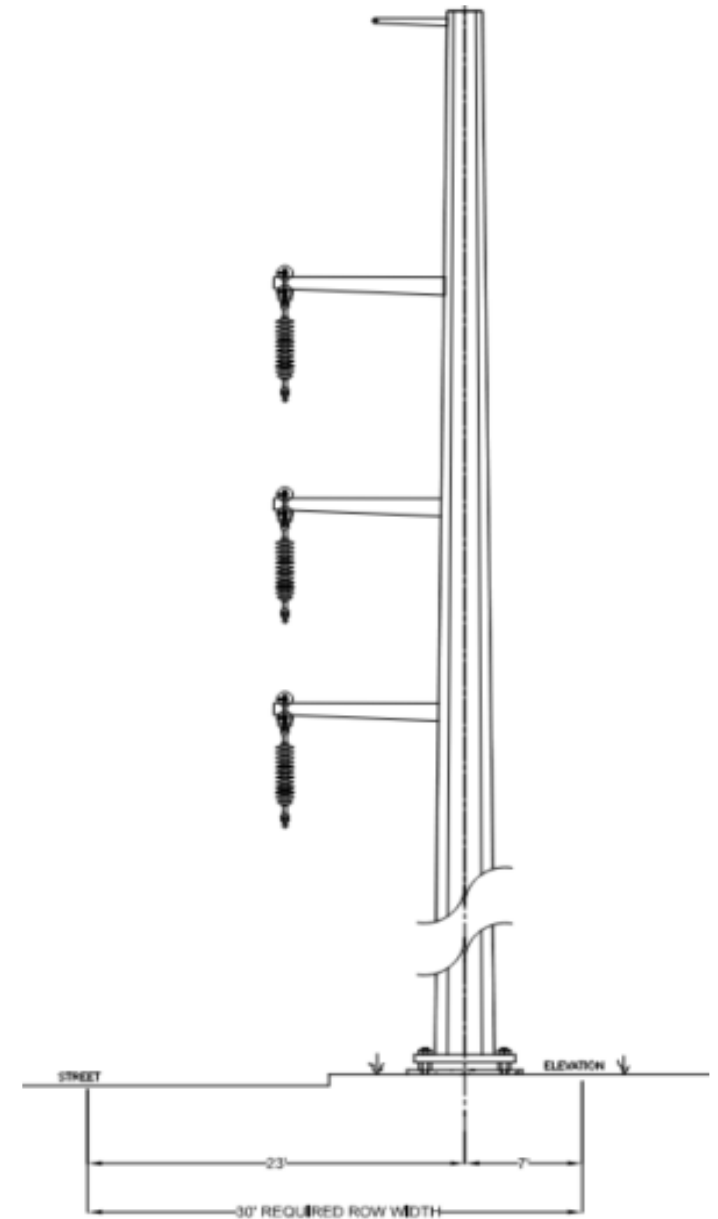
# Reducing Effects on Parkland

- Project complies with Chapter 191 of the Texas Natural Resources Code.
- Zero tree critical root zones affected.
- Transmission structure foundations located outside of community garden fence.
- Transmission arms holding wire oriented toward Waller Street, away from park, to minimize vegetation management.
- The project is not expected to require relocation or removal of gardens or trees.
- No project impacts to future planting phases.

# Bundling Conductor Together Reduces Easement Footprint



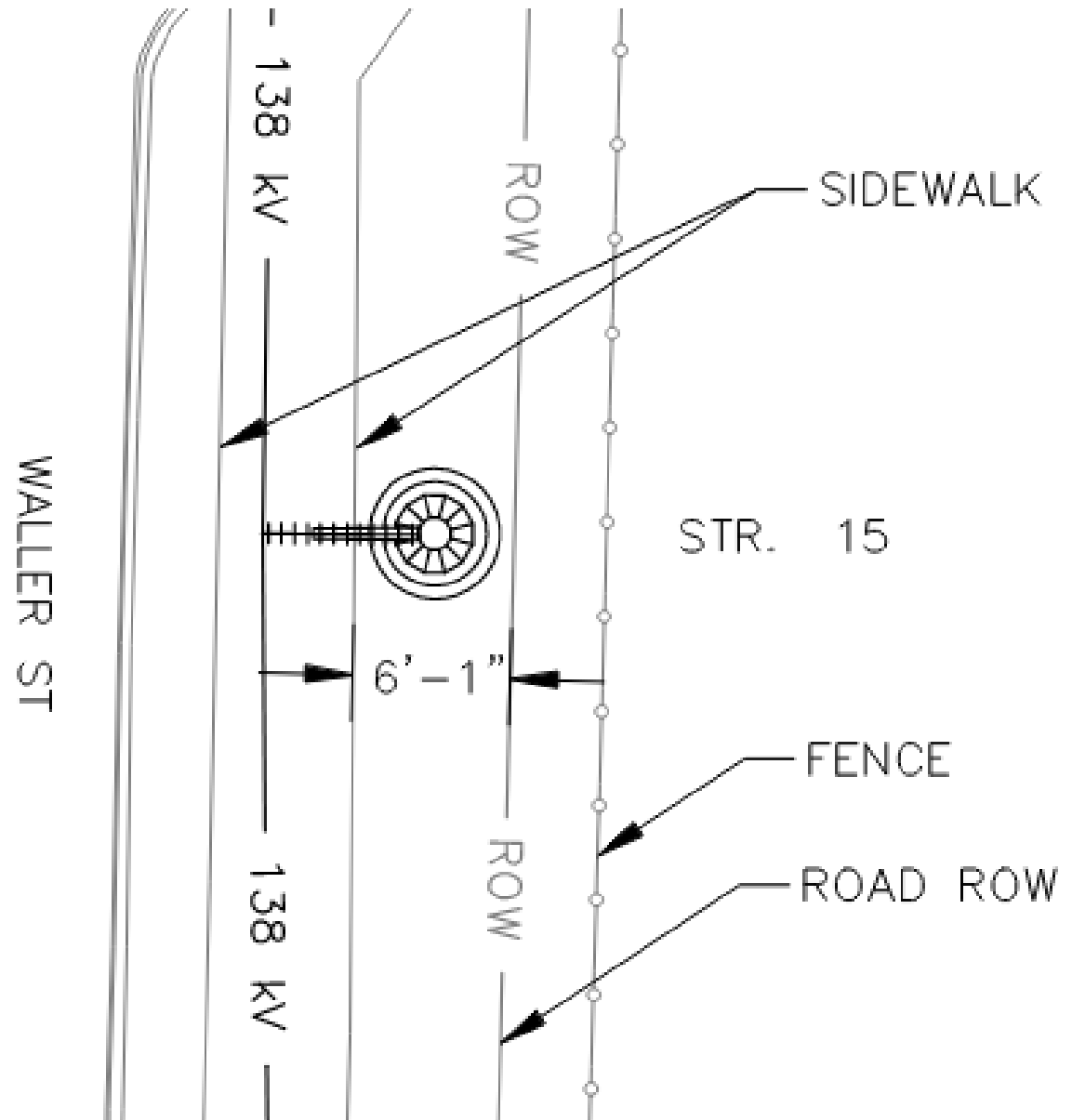
Existing structure



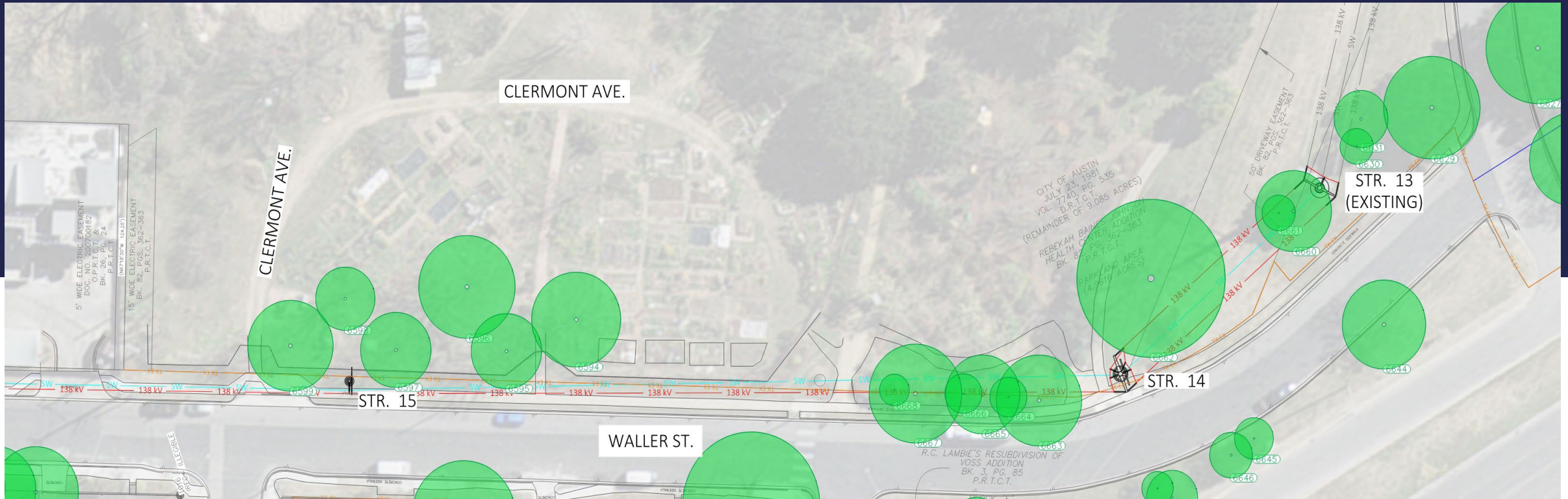
Proposed structure

# Festival Beach Irrigation Plans

Transmission structure 15 will be located inside road right of way and will not impact irrigation lines within park boundary.



# Structure Locations & Critical Root Zones



- Green circles represent critical root zones for existing trees
- Estimated foundation diameters:
  - **Structure 14** = 8.5 feet
  - **Structure 15** = 5 feet

# Limits of Construction for Structures 13, 14 and 15



# Augmented View 1

Looking North  
toward  
Structure 14



# Augmented View 2

Looking North  
toward  
Structure 15



# Summary of Stakeholder Engagement Efforts

Austin Energy continues to engage with local stakeholders to promote transparency and to address concerns.

## **Key partners include:**

- Festival Beach Food Forest
- Festival Beach Community Garden
- Residents of the RBJ Senior Living apartment building

## **A total of 5 onsite meetings have been held to date:**

- 10/01/24 - Austin Energy Engagement Meeting
- 01/29/25 - TxDOT Quarterly Meeting
- 04/03/25 - Austin Energy Update Meeting
- 06/25/25 - TxDOT Quarterly Meeting
- 10/25/25 - TxDOT Quarterly Meeting

# Project Coordination & Partner Support

## **During construction:**

- Austin Energy will coordinate closely and work around scheduled park events where feasible.
- Park access will remain open throughout the project.
- We remain committed to proactive, transparent communication with impacted partners.

# Next Steps:

- **August 2026:**  
Complete easement acquisitions
- **October 2026:**  
Begin high voltage transmission line reroute construction
- **May 2027:**  
Complete transmission line construction



# Summary

Approve a resolution to authorize a change in use of 15,368 sq. ft. of dedicated parkland at Edward Rendon Sr. Metro Park at Festival Beach to reroute and maintain a transmission line affected by the TxDOT Capital Express project.

**Funding:** This item includes a mitigation payment in the amount of \$2,414,240 from Austin Energy to Austin Parks and Recreation and, as a result, there is no impact to the General Fund.

# How to contact us

**Mark Kammerer, Public Involvement Manager**

[Mark.kammerer@austinenergy.com](mailto:Mark.kammerer@austinenergy.com)

**Carolyn Perez, Community Engagement Consultant**

[Carolyn.perez@austinenergy.com](mailto:Carolyn.perez@austinenergy.com)





**Austin**

**Energy**

**Questions?**