



TRANSPORTATION PUBLIC WORKS

Construction Coordination Approach

Mobility Committee Presentation
April 17, 2025



Agenda

- Central Texas Construction Partnership Program
- Austin Convention Center Traffic Management



Central Texas Construction Partnership Program (CPP)

A joint agency effort to prepare for the unprecedented amount of infrastructure improvements taking place across Central Texas (CTX) over the next decade.



- Streamline communication and enhance coordination
- Help people manage the impacts of construction on their daily lives
- Build on foundation for long-term interagency collaboration and success

Who is involved?



CENTRAL TEXAS REGIONAL
MOBILITY AUTHORITY



Why is it needed?

Over the next 10 years:

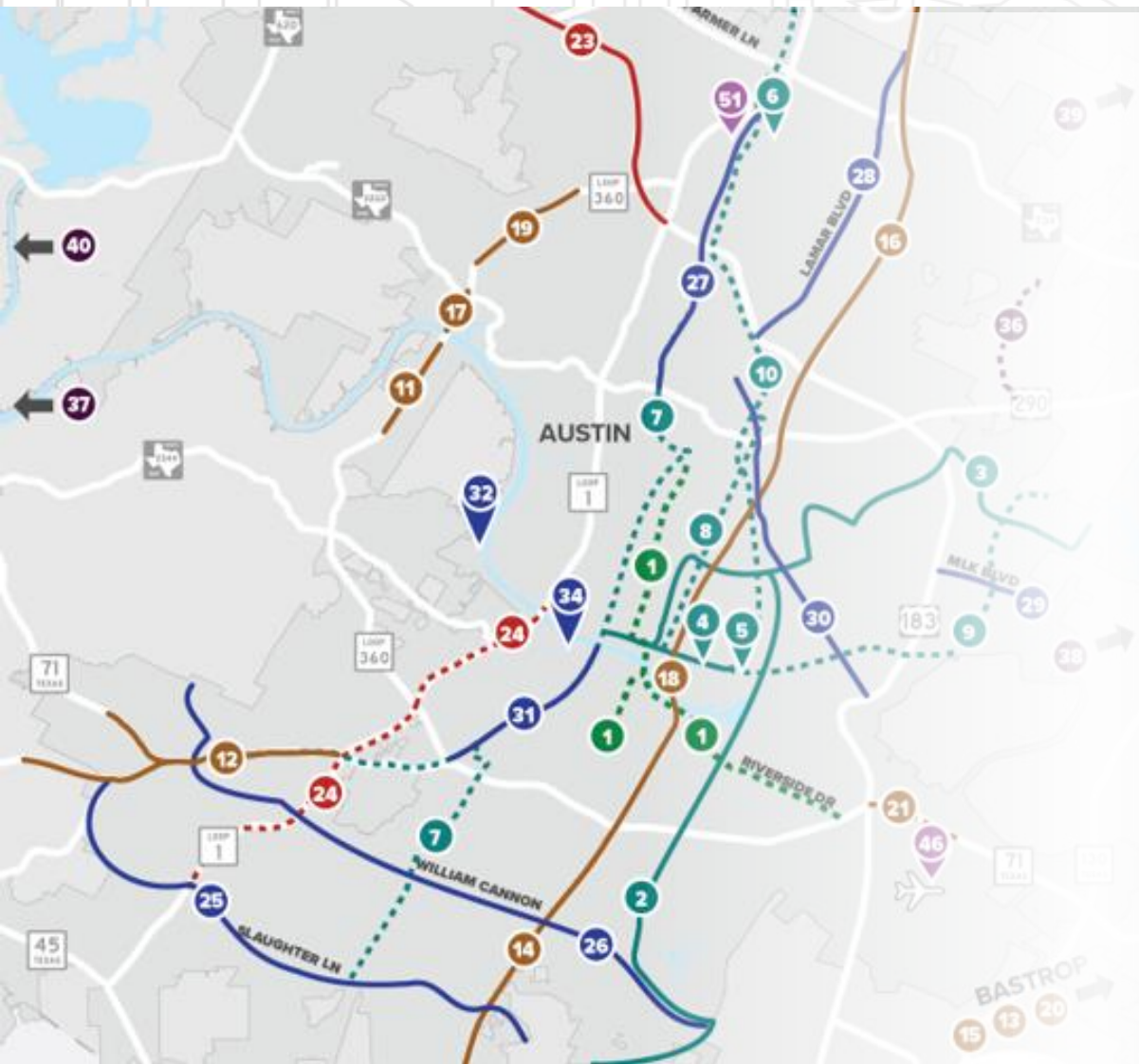
35+

Significant construction
projects

\$20B+

In public funding

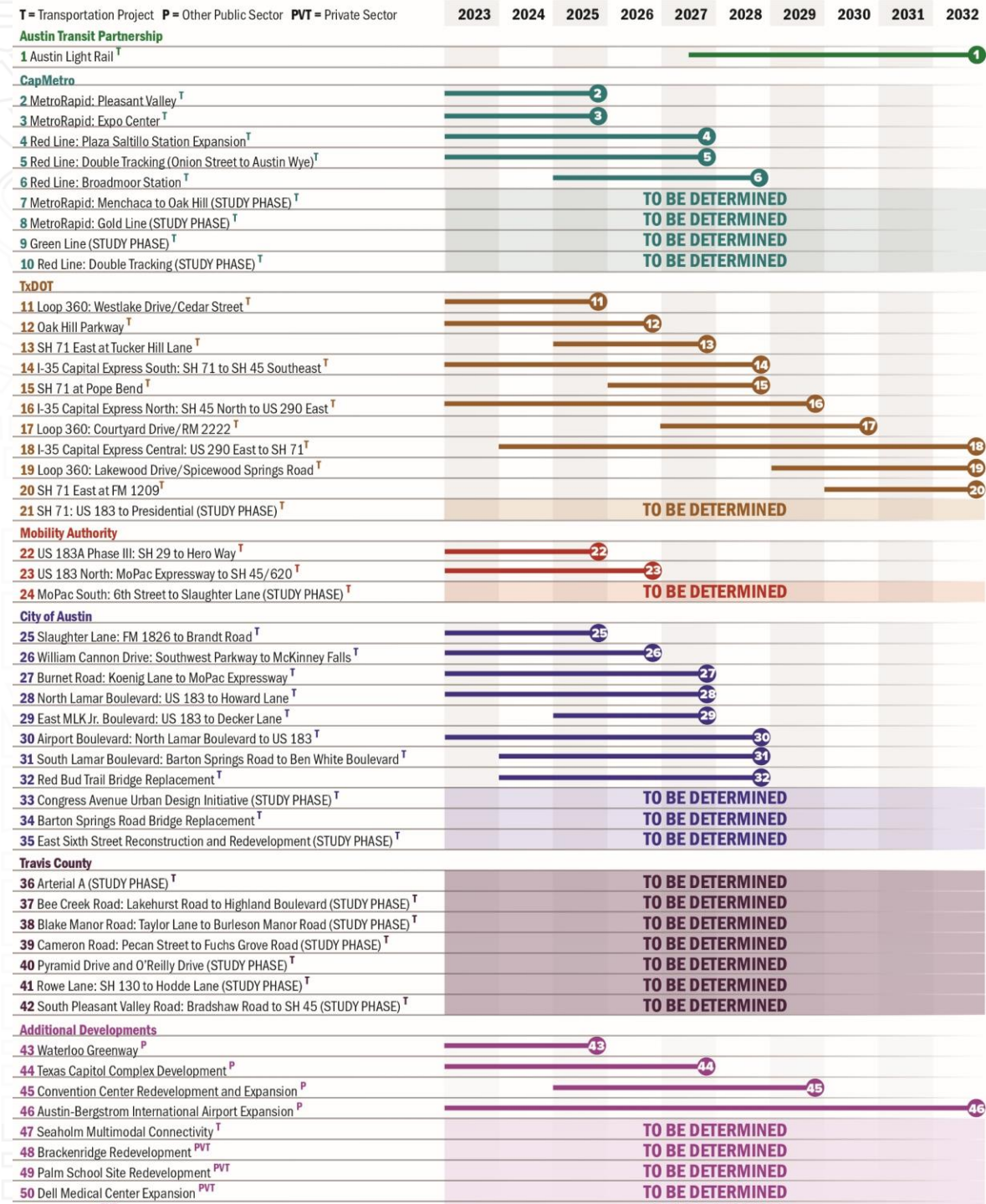
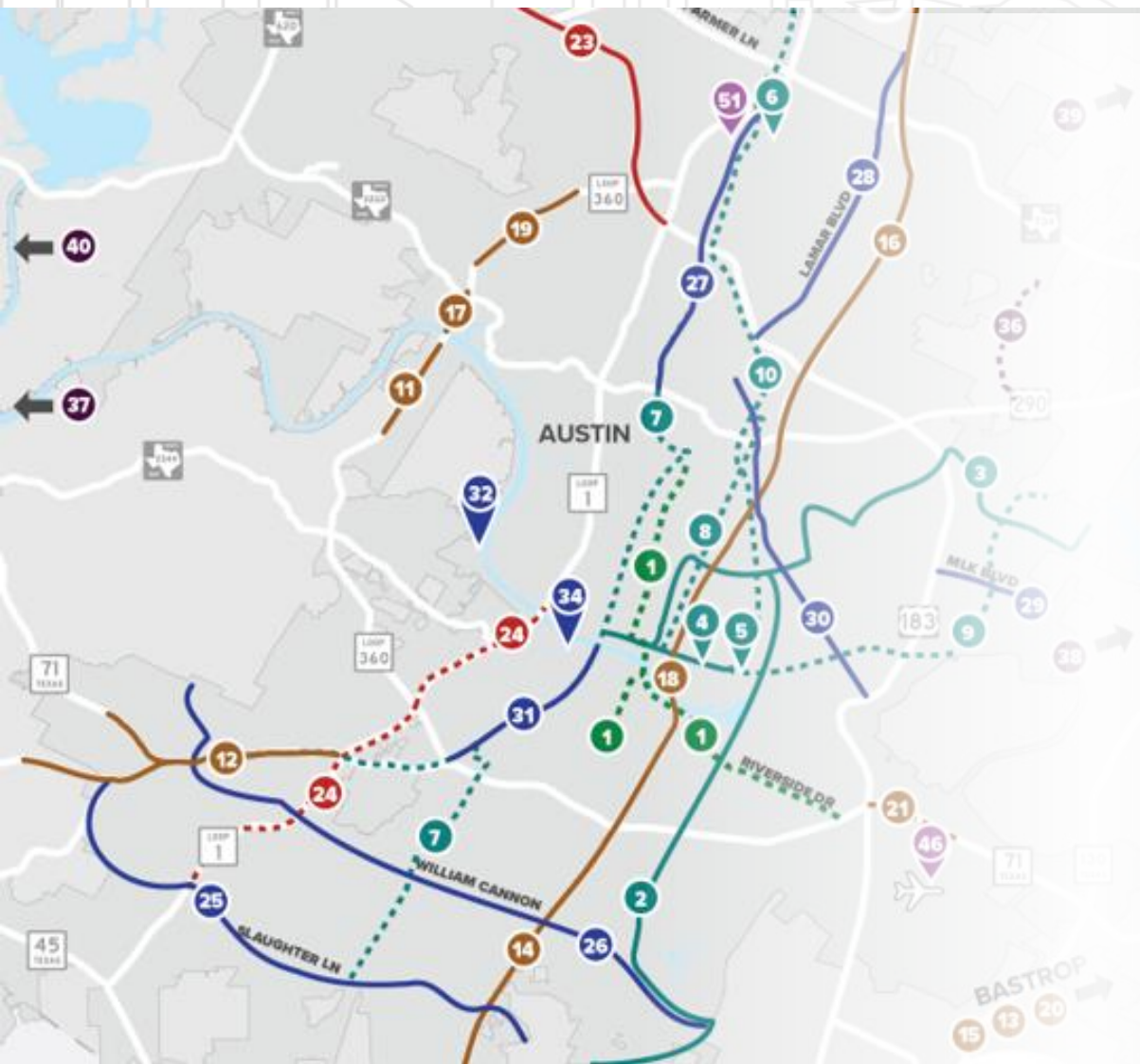
Why is it needed?



Many projects taking place at the same time:

- Reconstruction of I-35 through the urban core
- Light rail and expanded bus rapid transit service
- Improvements to busy City/County corridors
- Airport and convention center expansions
- Planning extensions of tolled Express Lanes on MoPac
- Multiple private development projects

Major Construction Projects



Updated in 11/2024 and is subject to change.

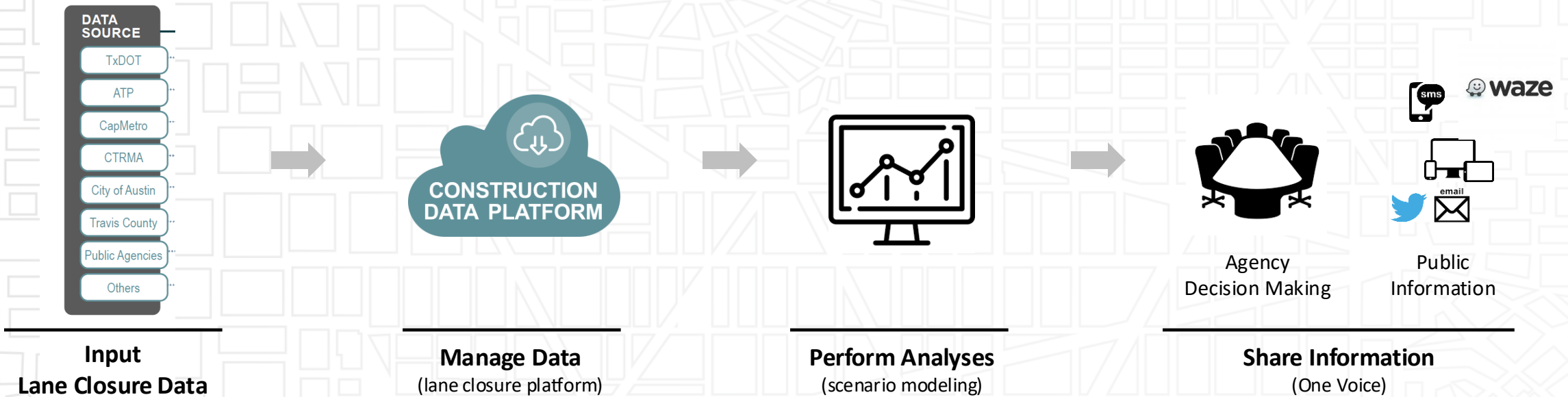
What are we doing?



- Coordinate Construction
- Maintain an Informed Public
- Manage Transportation Demand
- Manage Construction Traffic Impacts

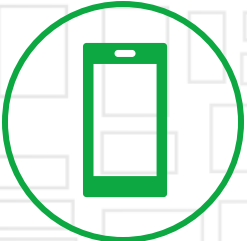


CPP - Coordinate Construction



CPP - Maintain an Informed Public

CTX GO includes three main ways the public can access information, providing options to find the latest traffic and construction updates:



Mobile App

An app travelers around the region can use to get traffic, lane closure and congestion updates on the go.

CTXGO>



Website

A mirror website of the app with both real time and future traffic and construction information, so travelers can plan their trips ahead of time.

CTXGO.com



Hotline

An easy-to-remember number for the public to call with “One-Stop Shop” inquiries about traffic conditions and ongoing construction projects.

(877) 85-CTXGO



CPP - Manage Transportation Demand

Climate Pollution Reduction Grant (CPRG) | Key Measures

**Measure 1:
Improve Existing
Services**
\$17,500,000

CapMetro Service
CARTS Service
Shuttle Service



**Measure 2:
Invest in TDM
Infrastructure**
\$7,140,668

Mobility Hubs
Bike/Ped Counters
Air Quality Monitors



**Measure 3:
Introduce Travel
Options**
\$22,625,000

TDM platform
Marketing + Education
Direct incentives



CPP - Manage Construction Traffic



City of Austin – Mobility Management Center

Exploring a Construction Traffic Management Center

- Co-locate agencies, remote connections as needed
- Leverage resources across agencies
- Builds toward Regional “One System” Traffic Management Center (CTECC 2.0)
- Timeline: late 2025/early 2026

Possible Services *(examples)*

- Adjust signal timing in real-time
- Actively monitor the system through Intelligent Transportation Systems
- Provide traveler information
- Coordinate HERO
- Data quality control for **CTXGO**



Convention Center Construction Traffic Mgmt.

KEY MILESTONE DATES

- Closure of Convention Center: April 1, 2025
- Move into new Convention Center: January 2029

UPCOMING KEY CONSTRUCTION MILESTONES

- Contractor mobilization: April 5, 2025
- Demolition of existing building: May 1, 2025
- Project Completion: December 31, 2028

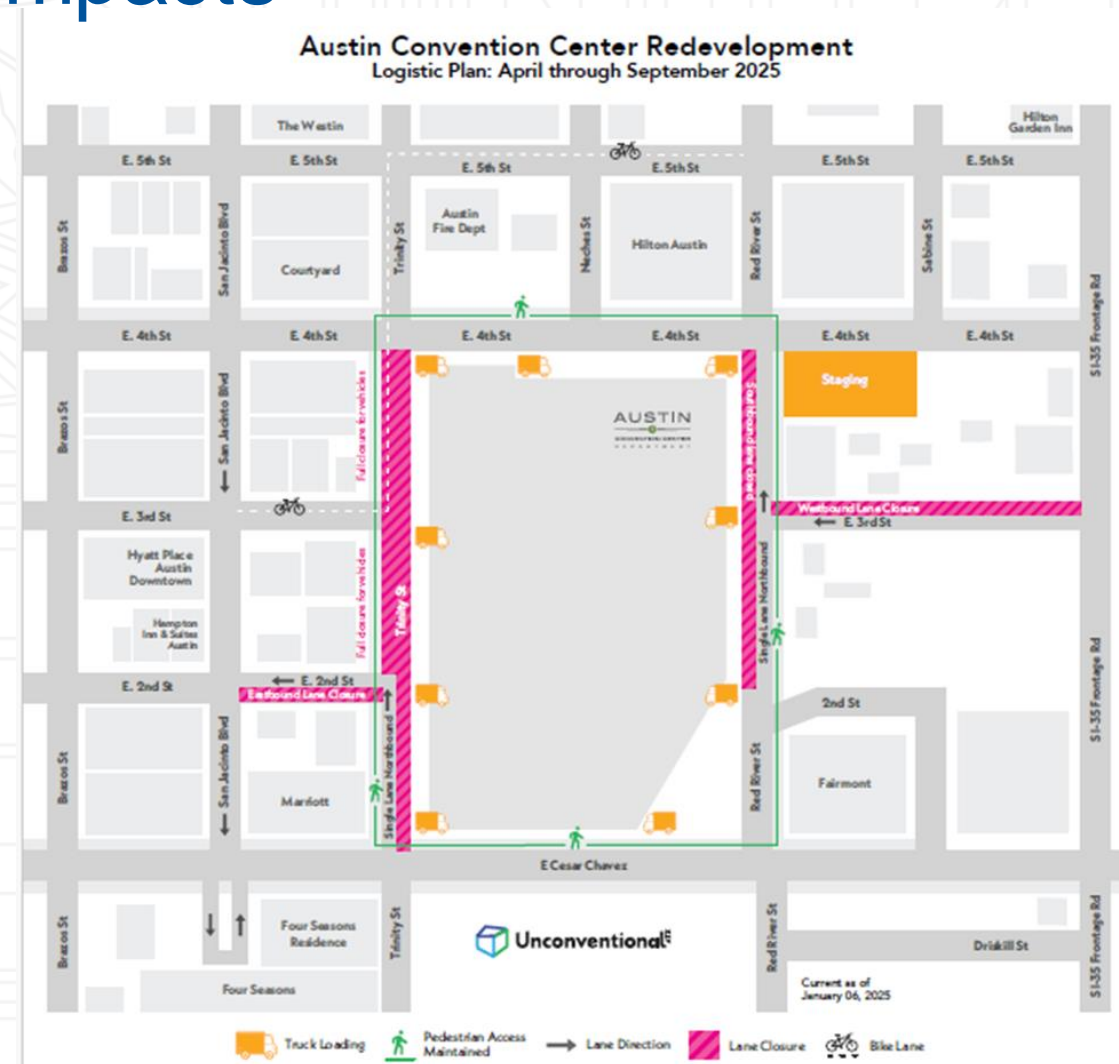


Austin Convention Center Redevelopment Project



Traffic Impacts

- Phase 1 of traffic control set up starts April 2025
- Trinity Street closed to vehicles
- One northbound vehicle lane on Red River open
- Bikes and peds detoured
- All lanes on Cesar Chavez will stay open
- Ped walkway provided on north curb on Cesar Chavez



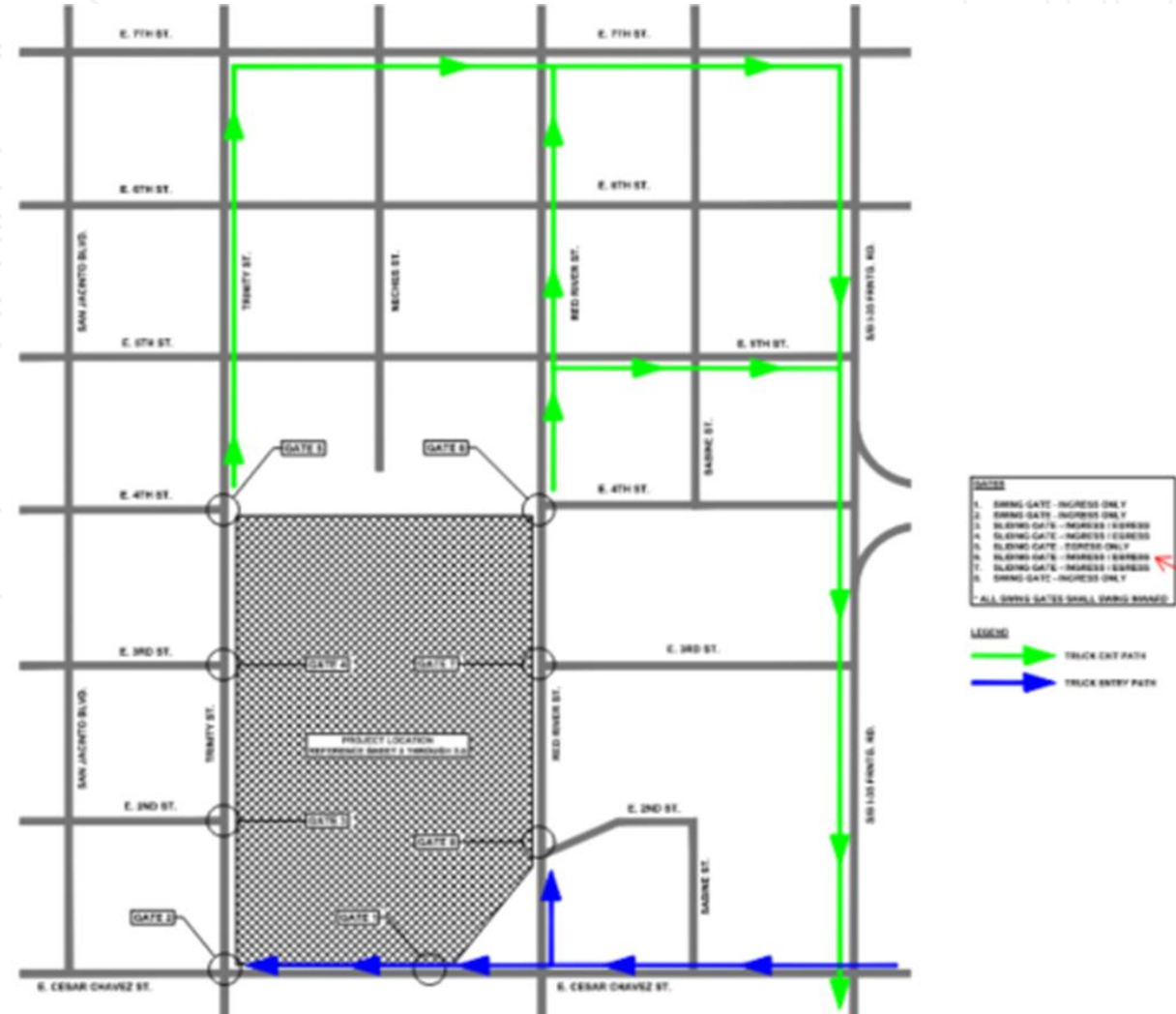
Haul Routes + Inspection

- Multiple ingress and egress points on site
- TPW/ROW inspectors will provide inspection support on traffic control set-ups, inspection and monitoring for mobility impacts
- TPW/ROW will monitor compliance with haul routes

PROJECTED PRIMARY TRUCK VOLUME ANALYSIS:
 LATE APRIL '25 TO JULY '25 = 80 - 110 TOTAL TRUCKS PER DAY
 SEPT. '25 TO SEPT. '26 = 400 - 570 TOTAL TRUCKS PER DAY
 SEPT. '26 TO APRIL '27 = 100 TOTAL TRUCKS PER DAY
 APRIL '27 TO DEC. '28 = 30-50 TOTAL TRUCKS PER DAY

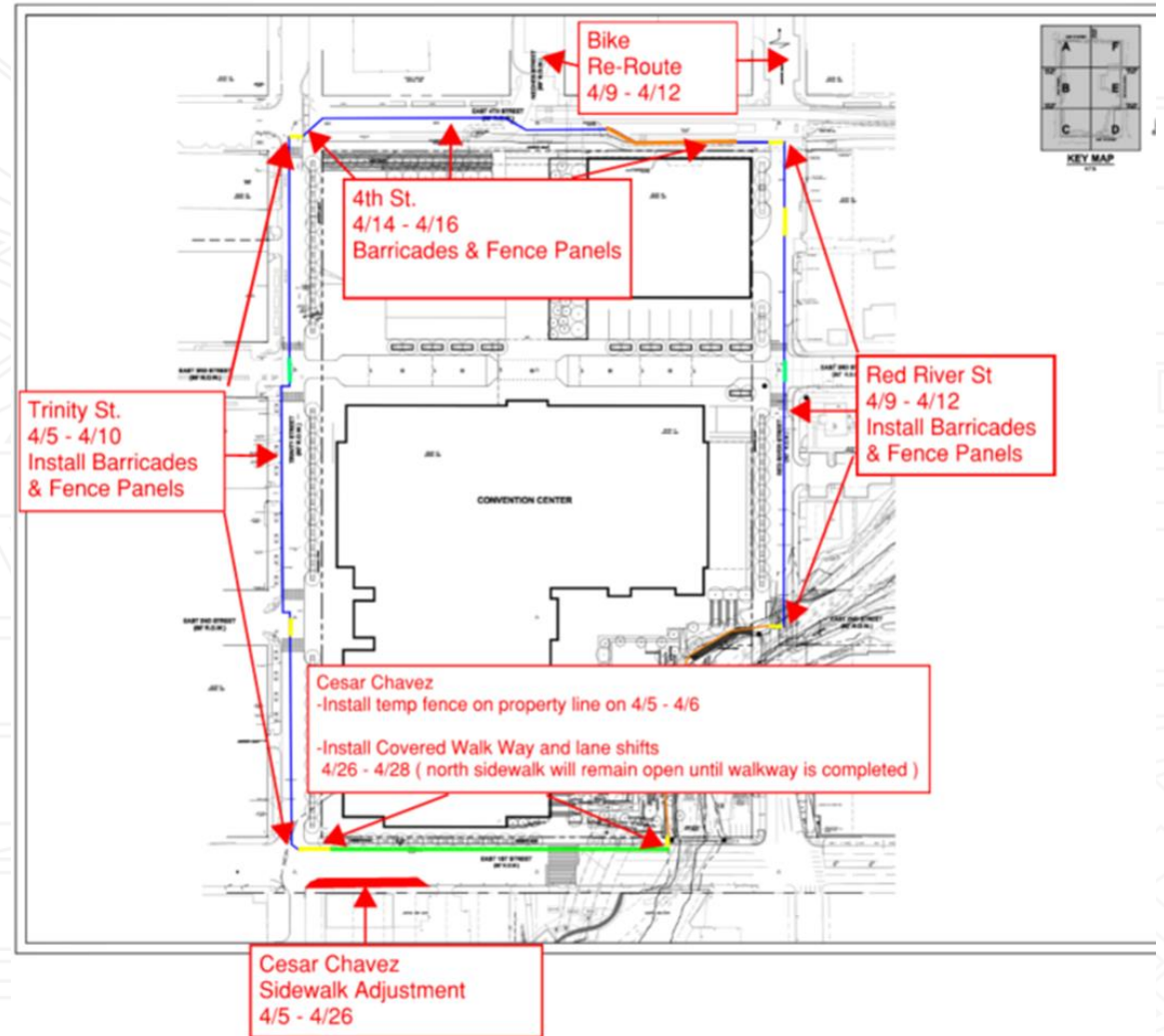
AT ANY TIME AND FOR THE DURATION OF THE PROJECT, CONSTRUCTION TRUCK / EQUIPMENT QUEUEING AT CONSTRUCTION GATES SHALL NOT SPILL BACK ON TO ANY OPEN TRAVEL LANE(S) IMPACTING MOBILITY TO THE TRAVELING PUBLIC. ALL QUEUEING SHALL BE CONTAINED WITHIN THE CONSTRUCTION FENCE AREA

* NOTE THAT TRUCK VOLUME IDENTIFIED IS ESTIMATED AND ACTUAL VOLUMES MAY EXCEED SAID AMOUNT.



Public Engagement + Notifications

- On-going public engagement with area hotels, businesses and residents
- Coordination with Austin Fire Department has occurred and is on-going
- Text alerts and email notifications of major news/impacts will be pushed out
- "Rainey Street" stakeholder group will be kept informed in weekly/Friday recurring meetings
- COA Teams Channel for project will provide swift collaboration + troubleshooting of mobility issues/complaints
- MMC will monitor traffic cameras
- Overhead Message Boards will notify traveling public of upcoming work
- Single Point of Contact for public inquiries will be identified





TRANSPORTATION PUBLIC WORKS

Thank You!

