

A gravel path winds through a wooded area with lush green trees. In the distance, a person wearing a red shirt and dark shorts is walking away from the camera. To the right of the path, there is a white informational sign on a post and a red warning sign attached to a tree trunk. The scene is brightly lit, suggesting a sunny day.

GREAT SPRINGS PROJECT

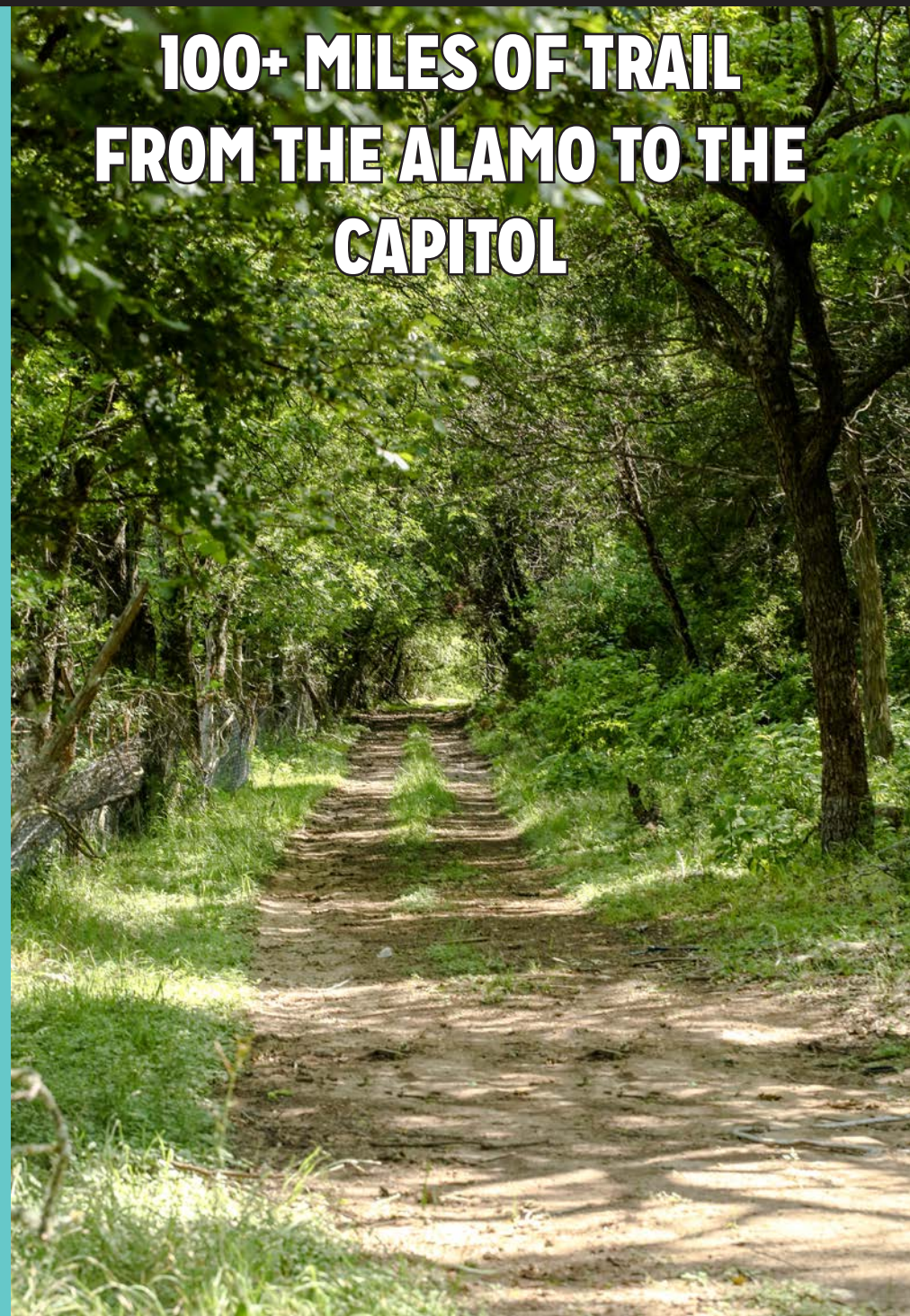
CITY COUNCIL MOBILITY COMMITTEE // 9.19.24

WHAT WE DO

**50,000 ACRES OF
CONSERVATION IN THE
RECHARGE ZONE**



**100+ MILES OF TRAIL
FROM THE ALAMO TO THE
CAPITOL**



WHAT WE DO

**50,000 ACRES OF
CONSERVATION IN THE
RECHARGE ZONE**

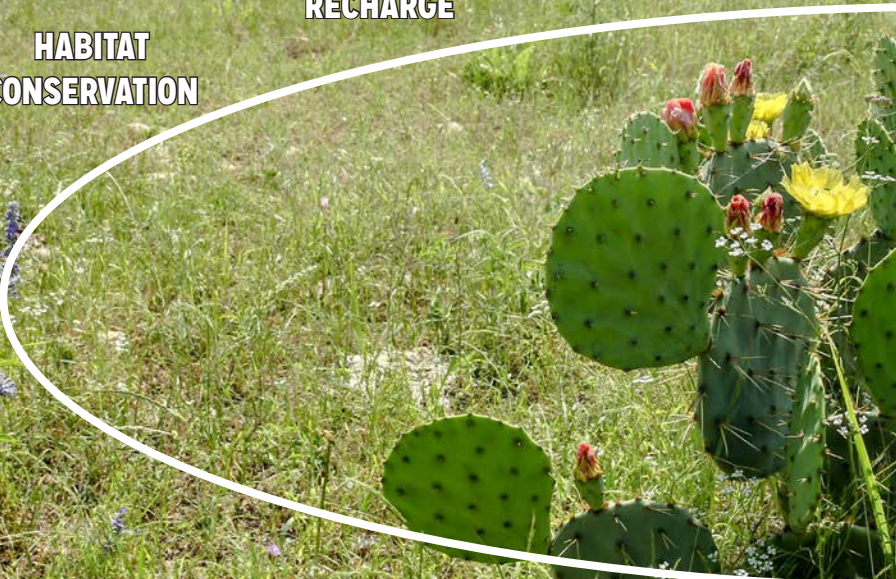
**HABITAT
CONSERVATION**

**AQUIFER
RECHARGE**

**PUBLIC
ACCESS**

**CARBON
SEQUESTRATION**

**CLIMATE CHANGE
MITIGATION**



**100+ MILES OF TRAIL
FROM THE ALAMO TO THE
CAPITOL**

**ACTIVE
TRANSPORTATION**

**RECREATIONAL
USE**

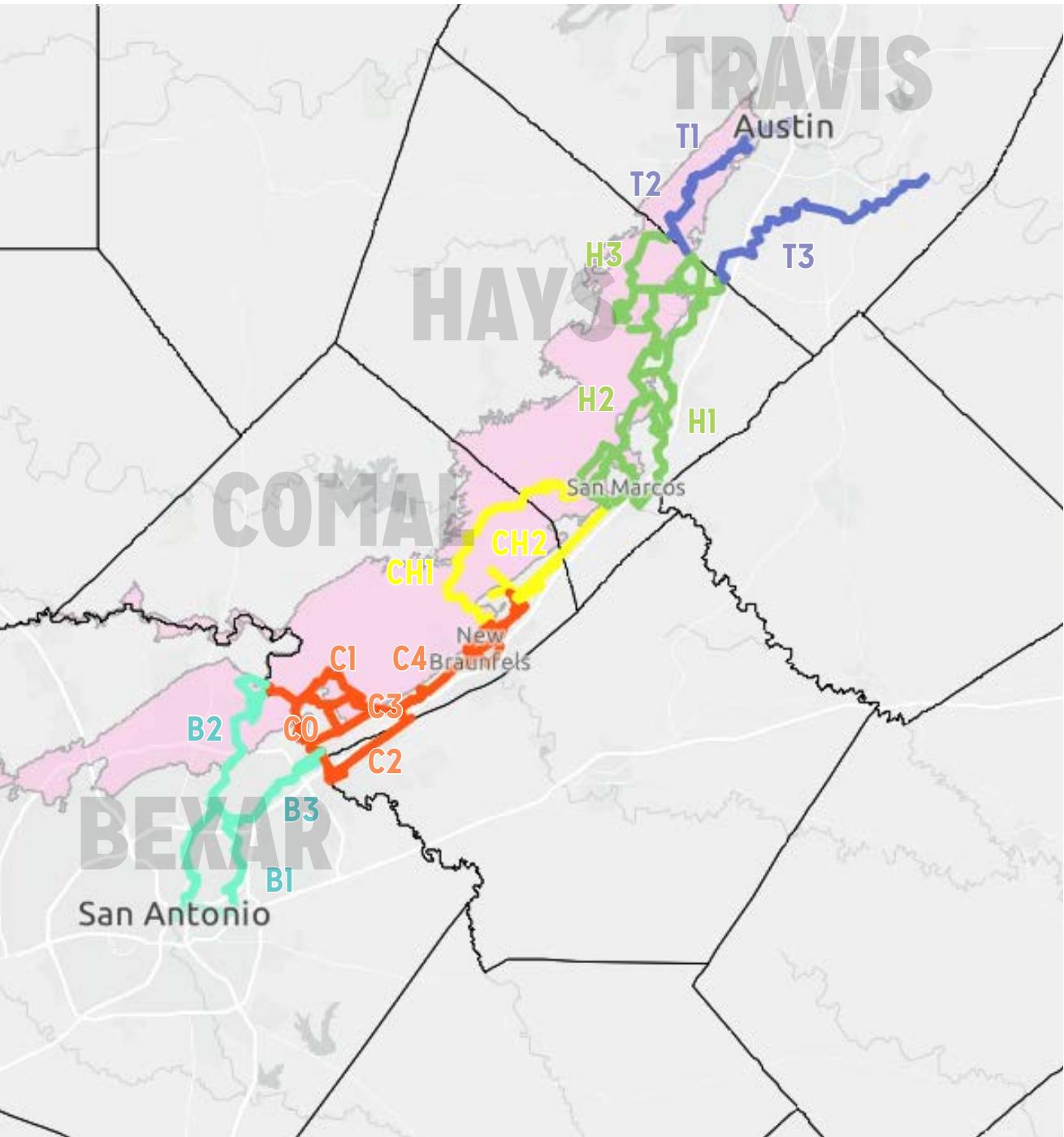
**WORKFORCE
DEVELOPMENT**

**JUSTICE +
COMMUNITY**

**STORYTELLING +
PLACEMAKING**



WHERE WE WORK



Travis County Trail Segments:

TRAVIS 1: Violet Crown to Lady Bird
SH45 to Ladybird Wildflower Center

TRAVIS 2: Violet Crown to Barton Springs
Ladybird Wildflower Center to Barton Springs

TRAVIS 3: Onion Creek Greenbelt
Onion Creek to Colorado Confluence

Hays County Trail Segments:

HAYS 1: Emerald Crown Trail
San Marcos Springs to connection with Violet Crown Trail

HAYS 2: Blanco River
Presa to Blanco Bend to Emerald Crown Trail to Violet Crown Trail

HAYS 3: Hays County Violet Crown Trail
Onion Creek to SH45

Comal/Hays Trail Segments:

COMAL/HAYS 1: Western Swing
Pantermuehl to La Cima to San Marcos Springs

COMAL/HAYS 2: Hunter Road
Alligator Creek to Kissing Tree to La Cima to San Marcos Springs

Comal County Trail Segments:

COMAL 0: Cibolo Creek Greenway
Selma, Schertz, Cibolo

COMAL 1: Comal Run
Cibolo Bluffs Nature Preserve to Comal Community Historic Site

COMAL 2: Great Northern Trail
Schertz to Great Northern Trail to Dry Comal Creek

COMAL 3: Dry Comal Creek Greenway
Solms Park To Landa Park and Comal Springs

COMAL 4: Alligator Creek
Landa Park to Alligator Creek to Pantermuehl Pocket Park

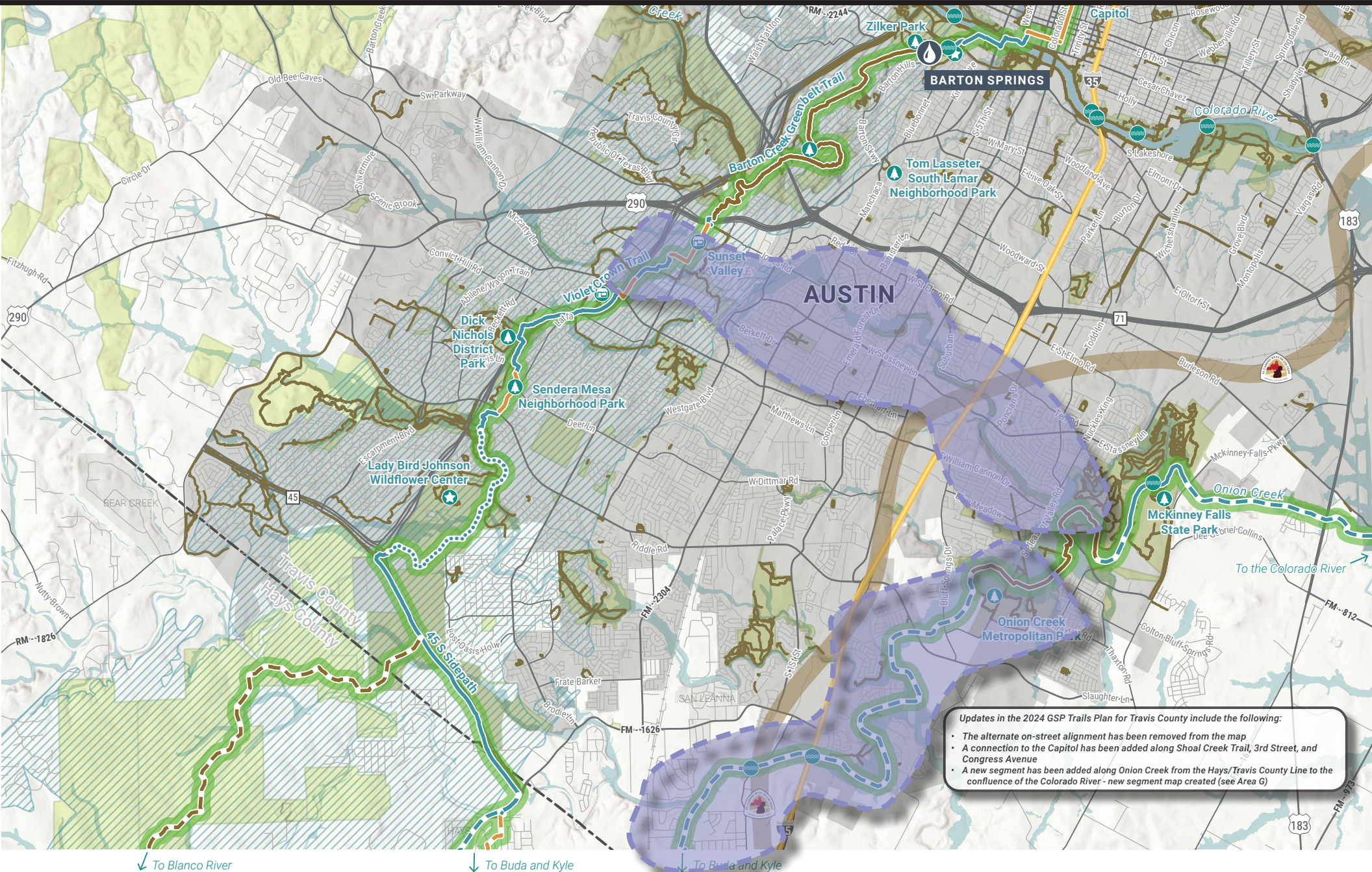
Bexar County Trail Segments:

BEXAR 1: Spirit Reach + The Flyway
The Blue Hole to McAllister Park

BEXAR 2: Bracken Path
McAllister Park through Mud Creek to Cibolo Bluffs Nature Preserve

BEXAR 3: Beitel Creek Greenway
LBJ Park through Beitel Creek to Retama Park

WHERE WE WORK



Updates in the 2024 GSP Trails Plan for Travis County include the following:

- The alternate on-street alignment has been removed from the map
- A connection to the Capitol has been added along Shoal Creek Trail, 3rd Street, and Congress Avenue
- A new segment has been added along Onion Creek from the Hays/Travis County Line to the confluence of the Colorado River - new segment map created (see Area G)

HOW WE DO IT



HILL COUNTRY RURAL

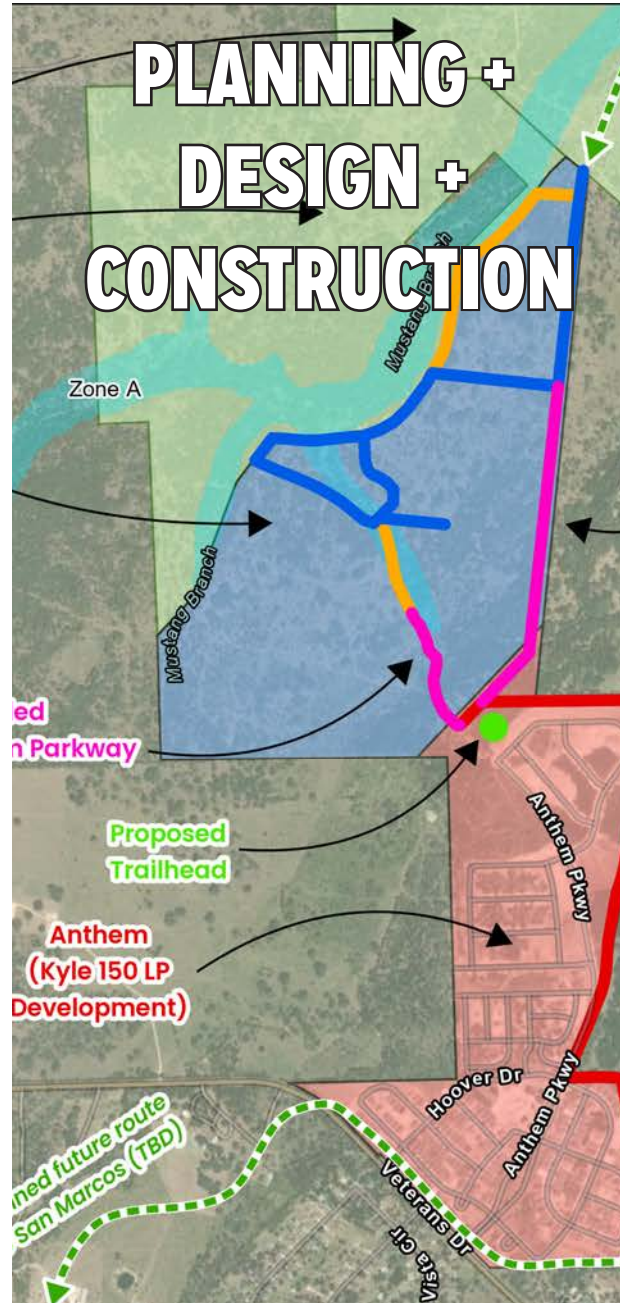
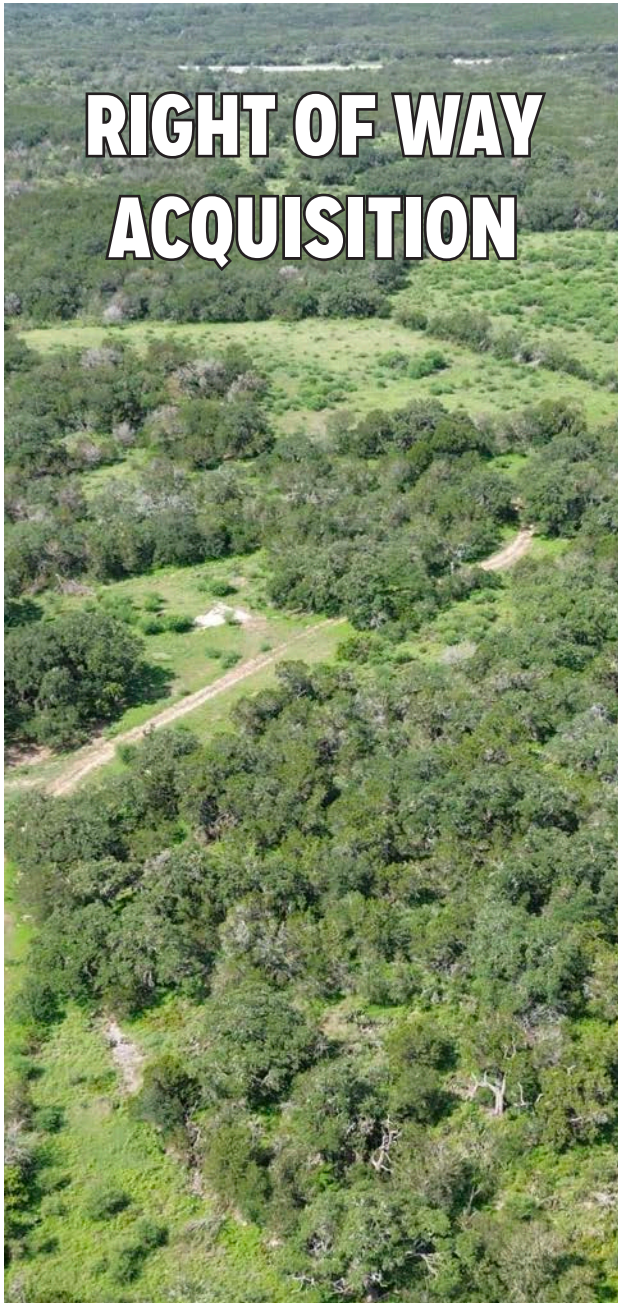
RANCLAND RURAL

SMALL TOWN

SUBURBAN

URBAN

HOW WE CAN HELP



WHAT WE'RE GOOD AT (AND WHAT WE'VE BEEN UP TO)

1

**WE ENGAGE WITH
LANDOWNERS, AGENCIES,
AND COMMUNITIES**



SUCH AS...

**LANDOWNER OUTREACH INITIATIVE
CAMPO RTP + TASA/CRP
COA ADVISORY COMMITTEES**

2

**WE BUILD COALITIONS TO
IMPLEMENT TRANSFORMATIVE
PROJECTS**



SUCH AS...

**LOWER ONION CREEK CONNECTIVITY + RESILIENCY
INITIATIVE // \$20M FROM EPA (PENDING)
COLORADO RIVER WATERSHED RESTORATION +
ACCESS PLAN // \$300K FROM BRM (PENDING)**

3

**WE BRING IN A LOT OF
MONEY FROM COMPETITIVE
GRANTS**



SUCH AS...

**TXDOT TRANSPORTATIVE ALTERNATIVES // \$1.8M
TPWD RECREATIONAL TRAILS // \$740K IN 2024
VARIOUS PHILANTHROPIC ORGANIZATIONS**



**THANKS!
QUESTIONS?**

MIKEY GORALNIK
mikey@greatspringsproject.org