



TRANSPORTATION PUBLIC WORKS

Street Impact Fees Overview – Mobility Committee

July 25, 2024



Presentation Overview

- What is the Street Impact Fee?
- Implementation Timeline
- Applicability
- Fee-In-Lieu & Mitigations
- Roadway Capacity Plan
- Guidelines & Collection
- SIF Summary- Total
- Summary- Invoiced and Collected
- Summary- Transportation/Mobility Improvements Constructed
- Examples
- Questions/Answers

What is the Street Impact Fee?

Purpose:

- SIF designed to fund transportation infrastructure improvements necessitated by new development projects.

Benefits:

- Provides developers with a consistent approach to transportation mitigation fees.
- Provides certainty of fees based on what developer plans to build.
- Provides for collection across more developments, increasing funding for roadway projects.

Calculation:

- Calculated based on the anticipated impact of new developments on the city's street infrastructure.
- Utilizes factors such as the size and type of development.



What is the Street Impact Fee?

Implementation:

- Developers are required to pay SIF to obtain building permit.
- Addresses the costs of increased traffic and expanding the transportation network.

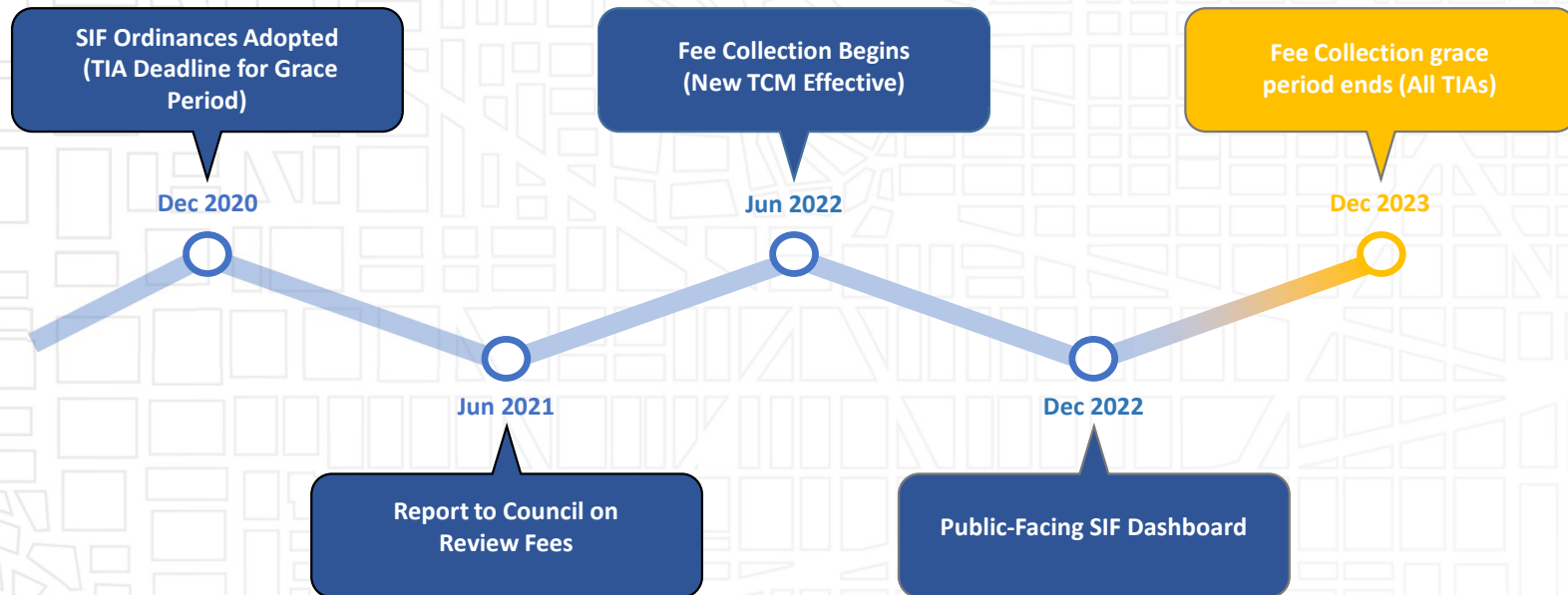
Usage:

- Funds collected are allocated towards expanding Austin's road network capacity.
- Managing congestion and enhances transportation efficiency.



Implementation Timeline

STREET IMPACT FEE



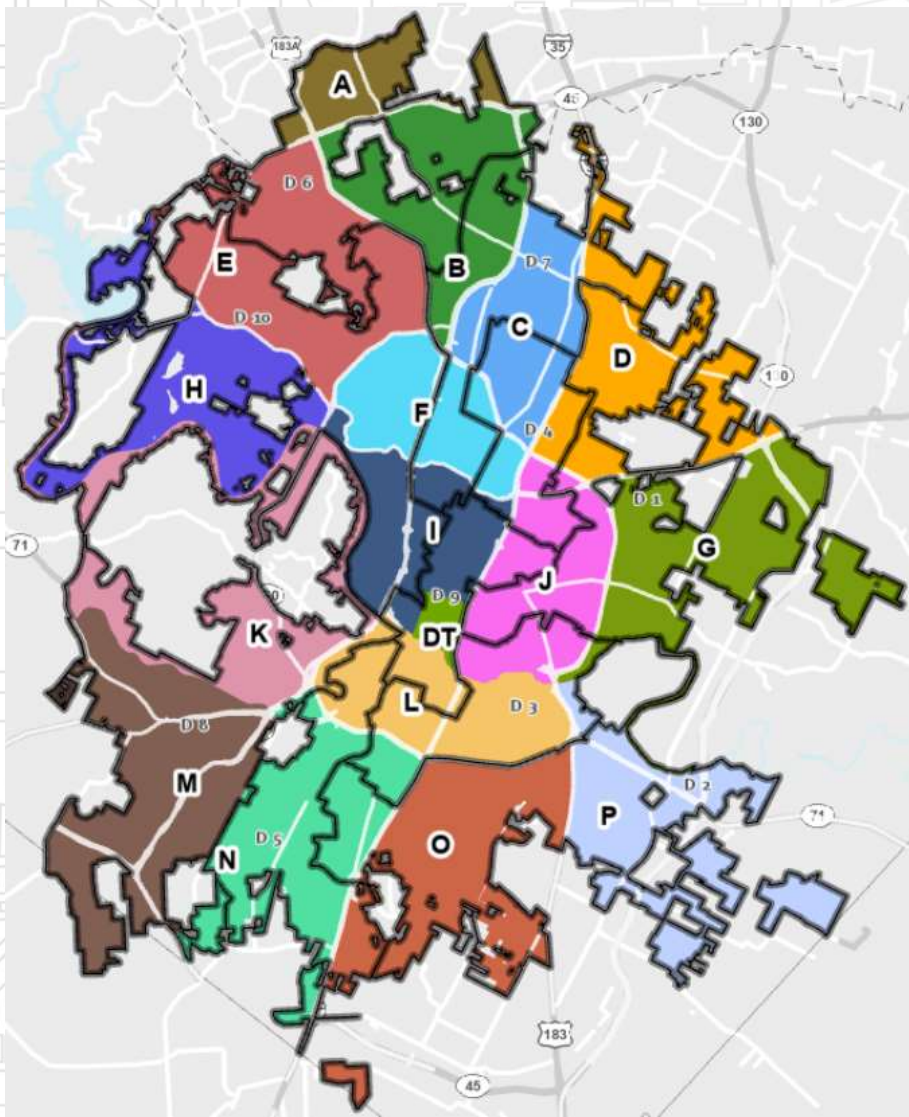


SIF Applicability

SIF collection began in June 2022, after an 18-month grace period from adoption in December 2020.

SIF Applies to projects which generate 10 Peak Hour Trips (PHTs) or more

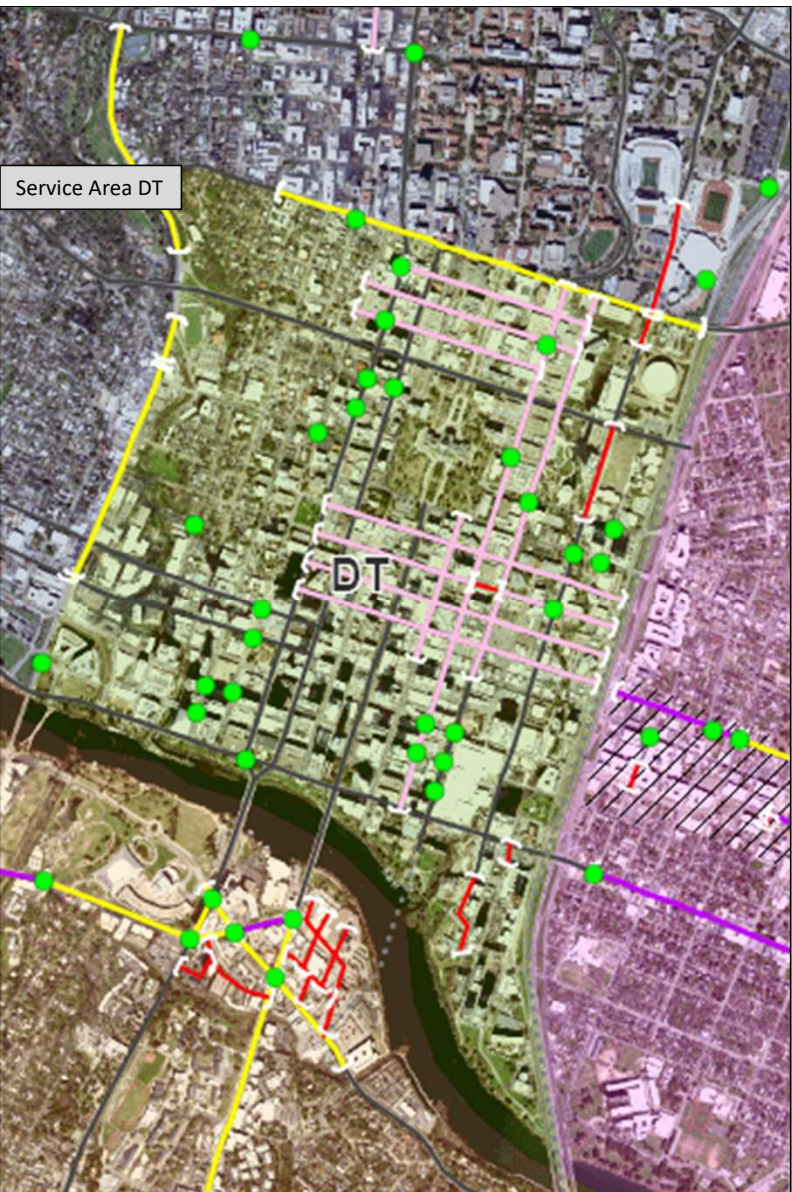
- Dependent on what is on the site before construction
- Mid-rise (4-10 floors) multifamily developments: ~23 units
- High-rise (11+ floors) multifamily developments: ~28 units
- Office developments: ~9,000 Square Feet



SIF, Fee-In-Lieu, and Mitigations

- SIF money remains in Service Area (map)
- SIF replaced transportation fees-in-lieu
- SIF can be reduced (constructed improvements, previously paid fees, affordability, etc.)

Council District	Service Areas	Council District	Service Areas
1	D, DT, G, I, J	6	A, B, E, H
2	N, O, P	7	B, C, D, F, I
3	G, J, L, N, P	8	K, L, M, N
4	C, D, F, I, J	9	DT, I, J, L
5	L, N, O	10	E, F, H, I, K



SIF Roadway Capacity Plan

Eligible SIF projects are defined in the Roadway Capacity Plan (RCP). The RCP consists of the following project types in each Service Area:

Two-Way Conversions –

Improvements associated with converting roadways to two-way.

Widening –

Additional width to accommodate all street features based on street design standards.

Access Management –

Median construction in the center turn lane.

New Connections –

New roadways or roadway extensions to strategically add capacity and street connectivity.

Intersections –

The construction or modification to existing intersections to increase capacity. This includes the installation of signals, roundabouts or turn lanes.



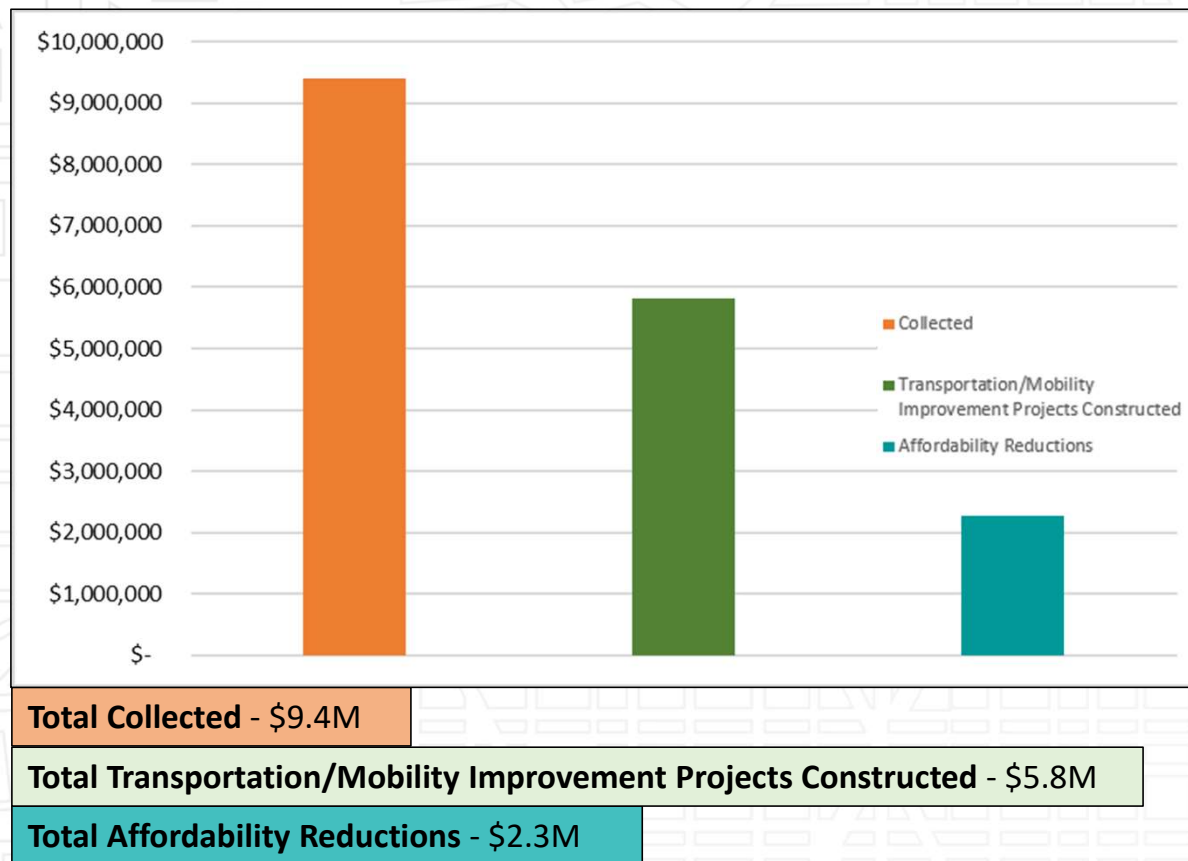
SIF Guidelines & Collection

Guidelines provide in-depth direction for:

- SIF Calculation Worksheet
- SIF Ordinance information
- SIF Reductions based on:
 - Affordable housing provided
 - Internal Trip Capture
 - Proximity to Transit
 - Parking Reduction

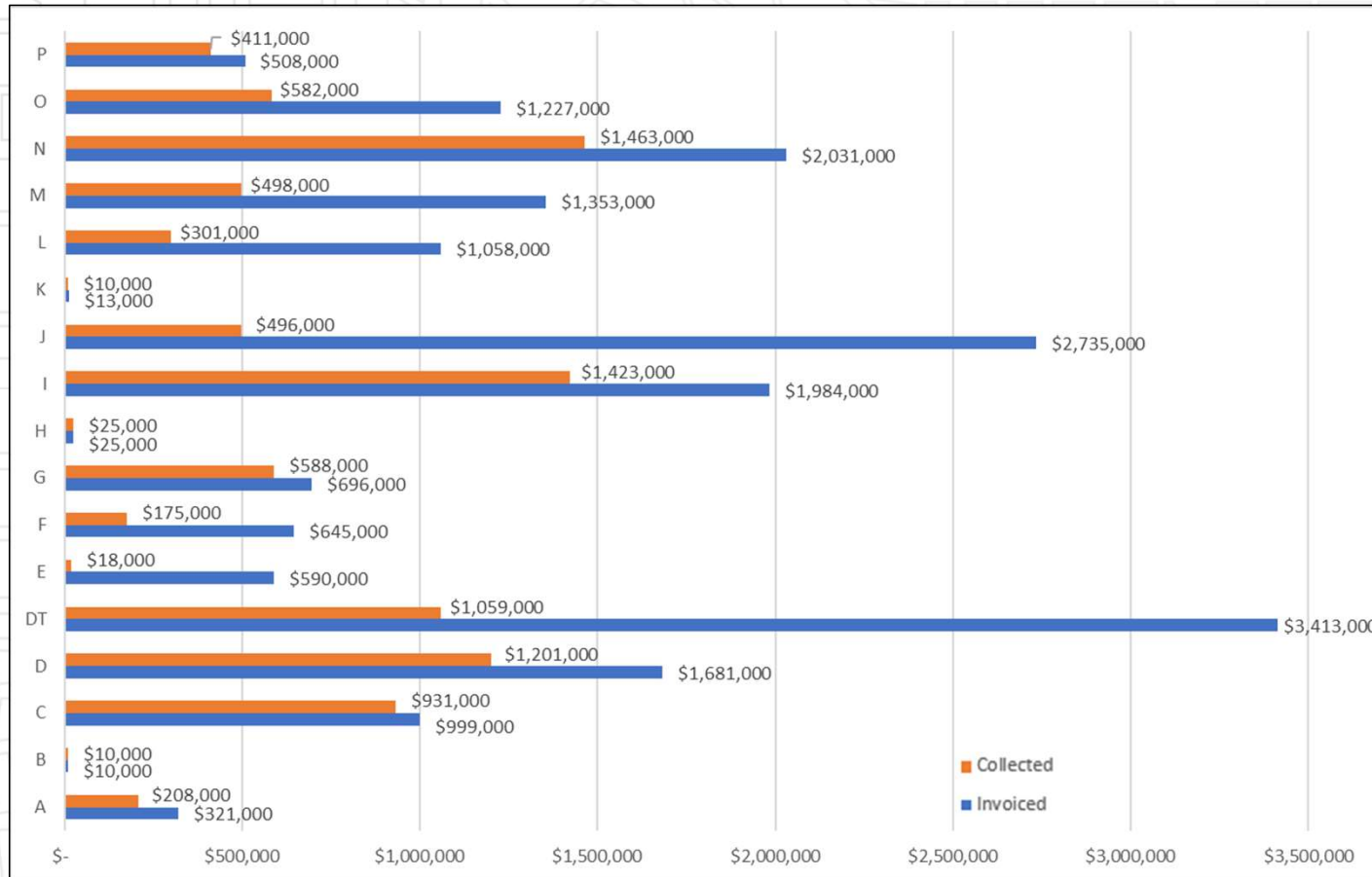
SIF Summary-

Collected, Transportation/Mobility Improvement Projects Constructed, Affordability Reductions



*As of June 2024

Service Area Summary- SIF Invoiced and Collected

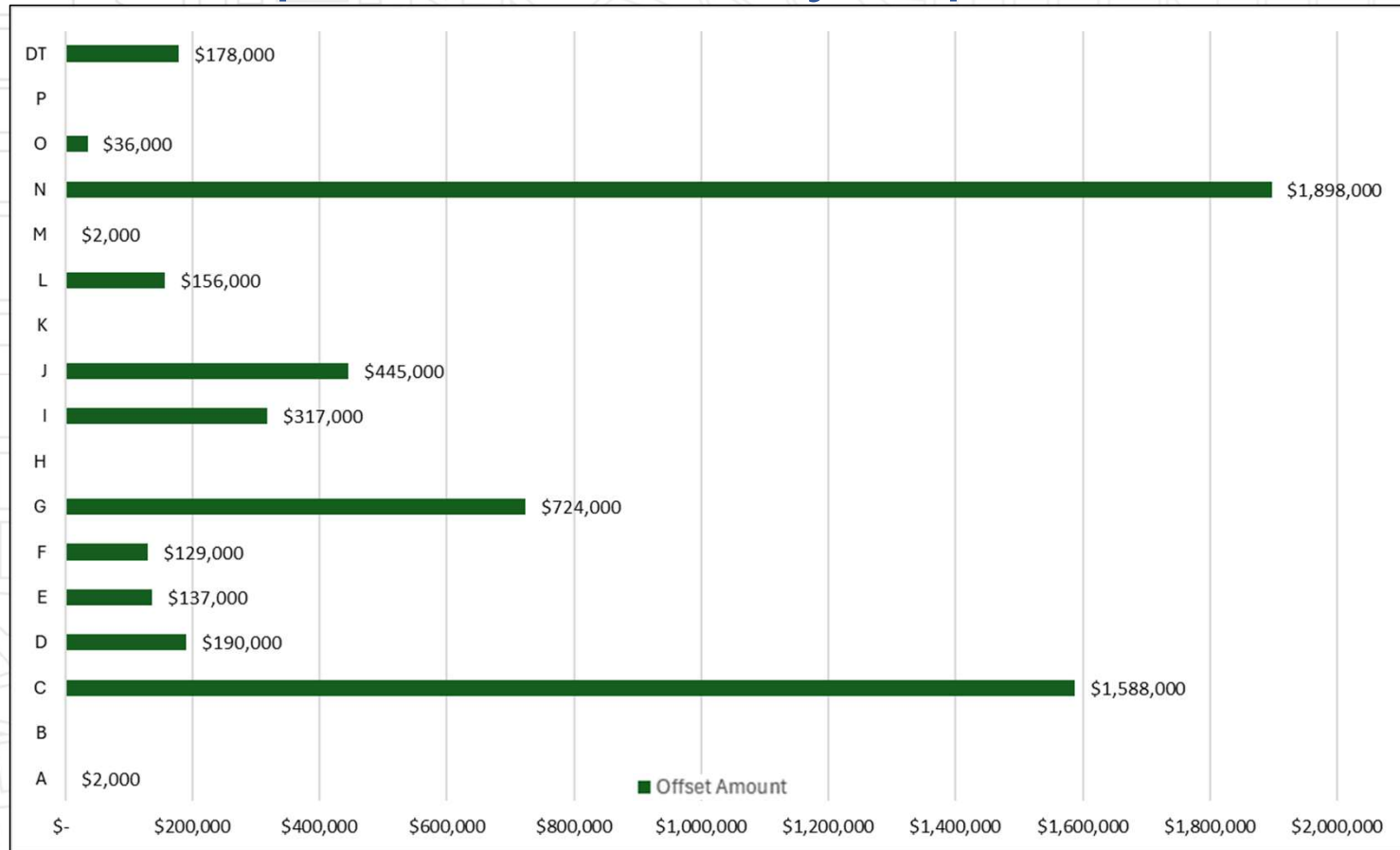


Total Collected - \$9.4M

Total Invoiced - \$19.3M

*As of June 2024

Service Area Summary- Transportation/Mobility Improvements



Total Transportation/Mobility Improvements - \$5.8M

*As of June 2024

SIF Improvements

Before (January 2022)

Service Area C
Council District 7

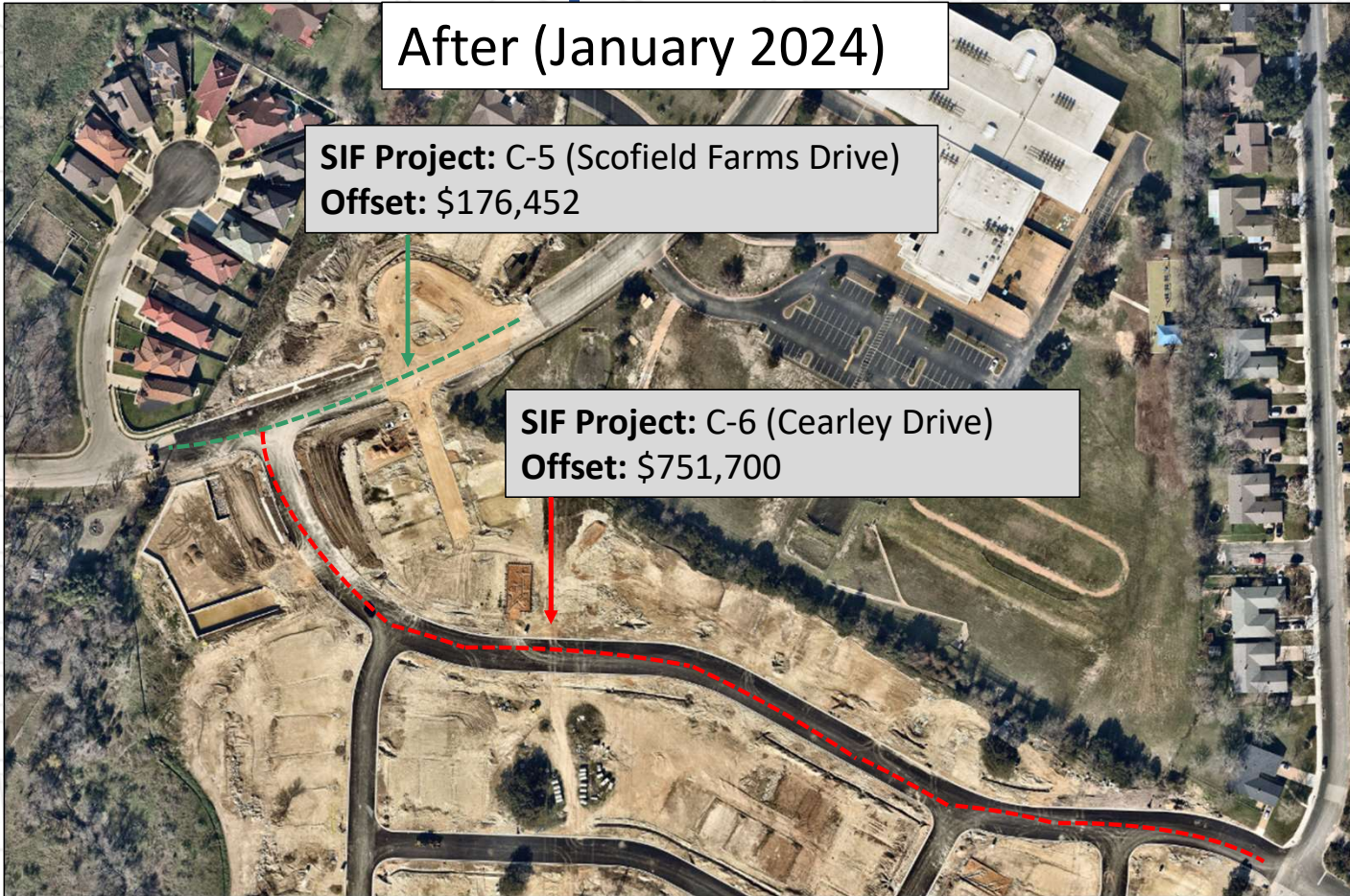


SIF Improvements

After (January 2024)

SIF Project: C-5 (Scofield Farms Drive)
Offset: \$176,452

SIF Project: C-6 (Cearley Drive)
Offset: \$751,700





TRANSPORTATION PUBLIC WORKS

Helpful Links

www.AustinTexas.gov/StreetImpactFee

StreetImpactFee@AustinTexas.gov

<https://www.austintexas.gov/page/transportation-project-development-program>

