



## **Organizational Update**

**Austin Public Health Committee  
June 5, 2024**



# BLACK MEN'S HEALTH CLINIC

**Organizational History.** The African American Men's Health Clinic (dba) the Black Men's Health Clinic was created and named in recognition of the racial and ethnic disparities men of color experience and suffer from – particularly Black Men. In honor of “Say Their Name” and the movements sparked against inequities, the Black Men's Health Clinic is intentionally combatting health inequities through its community health and resource center, providing outpatient care and social services through multiple provider partnerships. For that reason, this first-of-its-kind non-traditional clinic ensures a cross-section of services, providers, and space for men of color.

**Mission.** Lower barriers for successful healthcare by taking on some of the burden patients commonly experience such as scheduling, finances (payor-of-last resort), and coordination between providers.

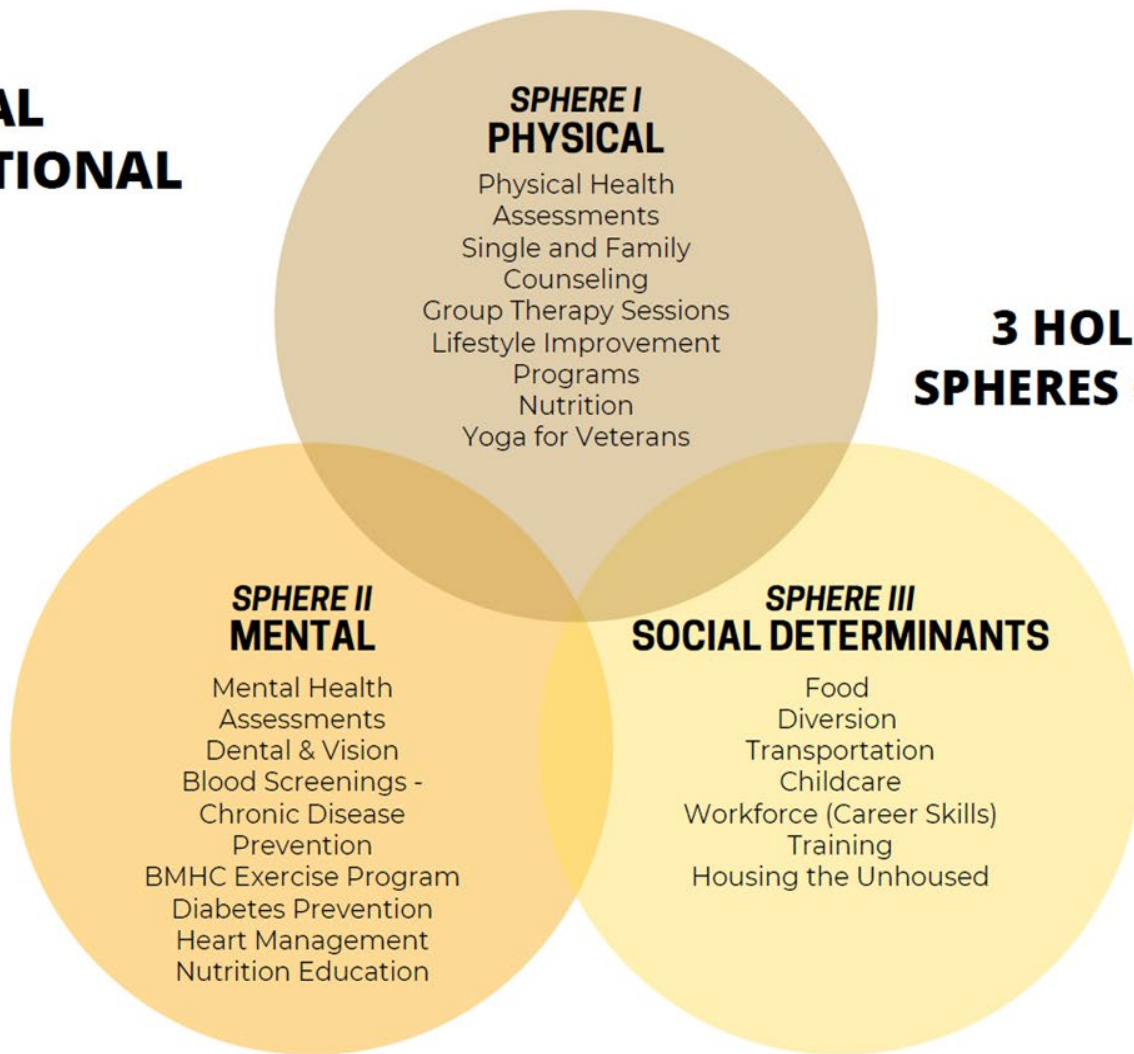
**Vision.** A no-wrong-door safety-net program addressing disparities through effective strategies focused on decreasing mortality and morbidity rates among men of color via improved quality of life, self-health maintenance, and family lifestyle at no-additional-cost to clients.

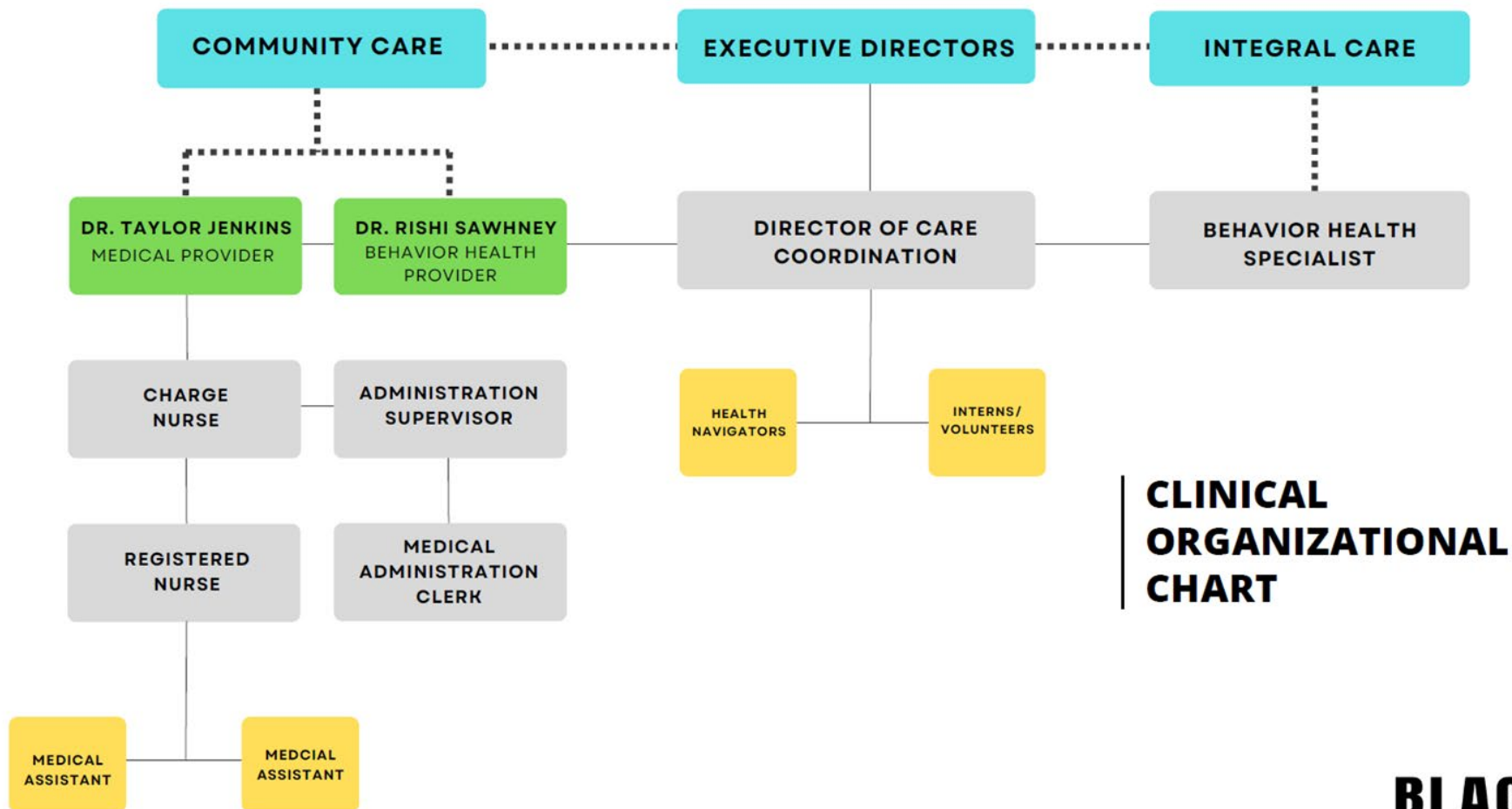
**Value Statement.** Ensuring the longevity of life by making physical, behavioral, and social care more accessible in underserved and underrepresented communities while transforming and removing stigmas regarding typical healthcare systems into positive life-changing experiences.

# FUNCTIONAL ORGANIZATIONAL CHART



## 3 HOLISTIC SPHERES OF CARE





## BMHC BUSINESS MODEL COMPARISON

CLINIC ADDRESSING SOCIAL DETERMINANTS  
OF HEALTH AND AFFORDABILITY

- ANDERSON VALLEY HEALTH CENTER
- CHICAGO FAMILY HEALTH CENTER
- EAST BOSTON NEIGHBORHOOD HEALTH CENTER CORPORATION
- LA CLINICA DE LA RAZA
- MARIPOSA COMMUNITY HEALTH CENTER

- BMHC
- PROJECT BROTHERHOOD
- PERRY FAMILY FREE CLINIC

SERVICE FOCUSED ON BLACK MEN

- 100 BLACK MEN OF AMERICA
- THERAPY FOR BLACK MEN

## BMHC BUSINESS MODEL COMPARISON

CLINIC ADDRESSING SOCIAL DETERMINANTS  
OF HEALTH AND AFFORDABILITY, IS  
ASSOCIATED WITH AN FQHC

- ANDERSON VALLEY HEALTH CENTER
- CHICAGO FAMILY HEALTH CENTER
- EAST BOSTON NEIGHBORHOOD HEALTH CENTER CORPORATION
- LA CLINICA DE LA RAZA
- MARIPOSA COMMUNITY HEALTH CENTER

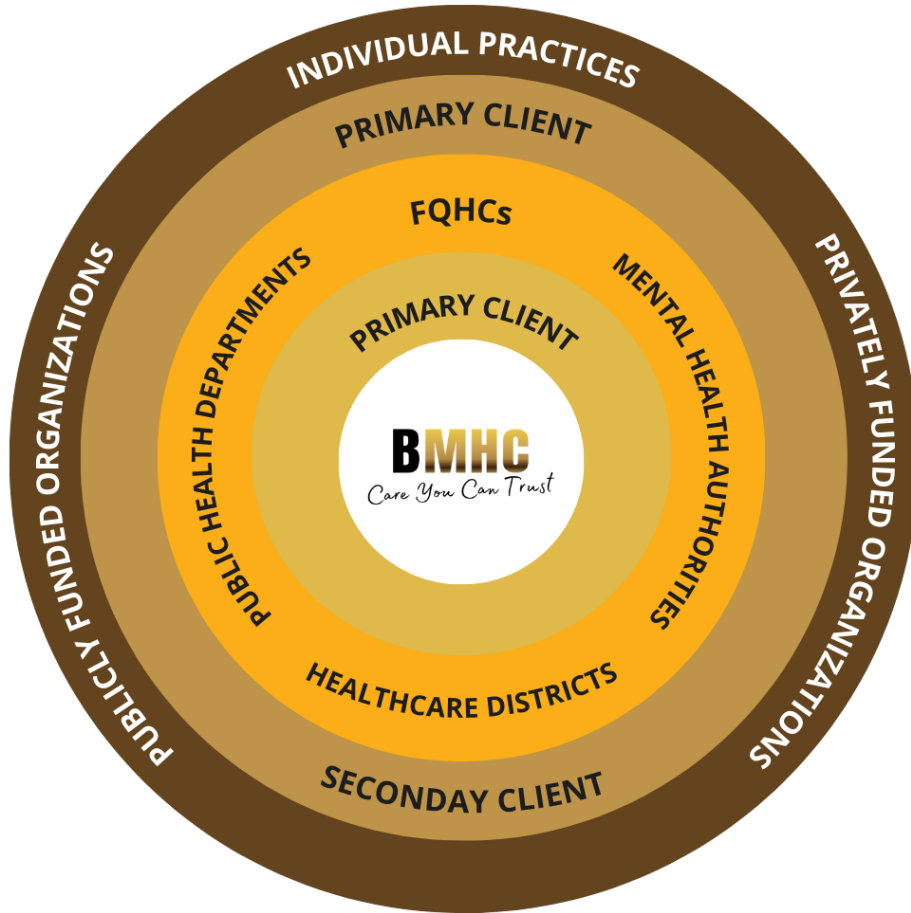
- BMHC

SERVICE FOCUSED ON BLACK MEN

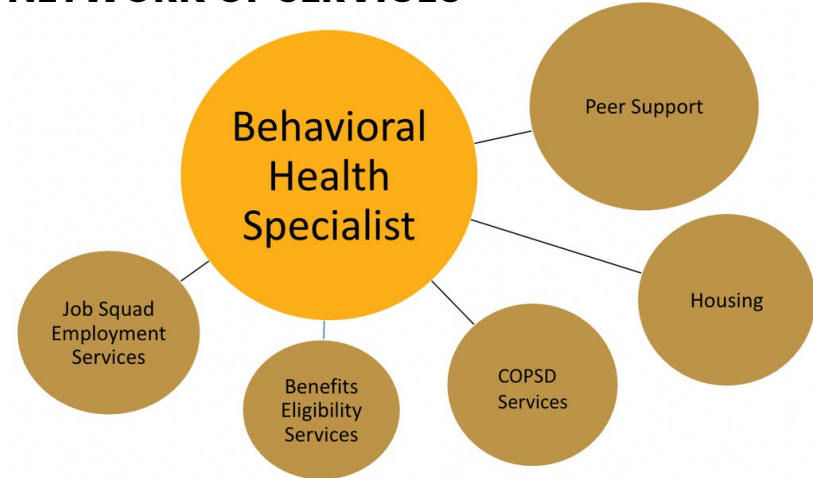
- 100 BLACK MEN OF AMERICA
- THERAPY FOR BLACK MEN
- PROJECT BROTHERHOOD
- PERRY FAMILY FREE CLINIC

**Our Distinction.** There are over 1,400 federally qualified healthcare clinics (FQHC) in the United States. The BMHC is the only Black men's health organization with active partnerships with FQHC(s). Many of the organizations that advance Black men's health are not clinics nor associated with clinics; instead, they tend to be destinations connecting Black men to needed services like therapy and health education.

# BMHC'S MODEL OF CARE



## INTREGAL CARE'S INTEGRATION WITHIN OUR COMPREHENSIVE NETWORK OF SERVICES



# OUTREACH EVENTS

FISCAL YEAR	COMMUNITY SPORTING EVENTS	PROFESSIONAL	COMMUNITY EVENTS	CHURCH EVENTS	ISD EVENTS
FY2023 (244)	31	24	164	11	12
FY2024 (115)	1	29	68	3	10

# GENDER

FISCAL YEAR	MALE	FEMALE	TRANSGENDER	UNKNOWN
FY2023 (428)	95.50%	3%	0.25%	1.25%
FY2024 (403)	86.5%	13%	0.5%	0%

# RACE

FISCAL YEAR	ASIAN	BLACK OR AFRICAN AMERICAN	WHITE, HISPANIC	NON WHITE, HISPANIC	AMERICAN INDIAN/ ALASKAN NATIVE	OTHER	UNKNOWN
FY2023 (428)	0.75%	56%	27.5%	1.5%	0.5%	3.62%	10.13%
FY2024 (403)	0.75%	44%	4%	47%	0.75%	0.75%	2.75%

## AGE RANGE

QUARTER	18 TO 24	25 TO 39	40 TO 54	55 TO 64	65 TO 74	75 AND OLDER	UNKNOWN
FY2023 (428)	3.88%	37.87%	37%	13.5%	5.25%	0.25%	2.25%
FY2024 (403)	6.5%	42%	24%	18.5%	2.5%	1%	5.5%

## ELIGIBILITY

QUARTER	MAP 000	MAP 100	MAP BASIC 100	MAP BASIC 150	MAP BASIC 175	MAP BASIC 200	SELF-PAY	PRIVATE
FY2023 (428)	5.3%	8.8%	12.9%	7.8%	2.6%	0.3%	60%	2.3%
FY2024 (403)	12.5%	32.5%	13%	13.5%	3%	3.5%	14%	8%



**RISHIT YOKANANTH** - UT AUSTIN COLLEGE OF NATURAL SCIENCES, DEPARTMENT OF NEUROSCIENCE - RESEARCH AND COMMUNITY HEALTH REPORT FOCUSING ON PROGRAMS, AGREEMENTS, AND SERVICES FOR THE CITY OF MANOR

**EN-YU LI** - GLOBAL POLICY STUDIES, LYNDON B. JOHNSON SCHOOL OF PUBLIC AFFAIRS. - RESEARCH AND COMMUNITY HEALTH REPORT FOCUSING ON PROGRAMS, AGREEMENTS, AND SERVICES FOR THE CITY OF MANOR

**ALFONSO INCIRIAGA III** - UT AUSTIN SCHOOL OF SOCIAL WORK - MACRO PROJECTS THAT ENTAIL COMMUNITY OUTREACH WITH AUSTIN ISD AND CLINICAL PRACTICES THAT INCLUDE TRAUMA-INFORMED CARE FOR UNDOCUMENTED IMMIGRANTS IN BMHC

**CHIDINMA ONYA** - TEXAS STATE SCHOOL OF PUBLIC HEALTH - MACRO PROJECT THAT INVOLVES INTERVIEWING PATIENTS TO ASSESS THEIR KNOWLEDGE ON DIABETES IN ORDER TO GIVE AN EDUCATIONAL SEMINAR ON DIABETES

**KRISTEN TUCKER** - WESTERN GOVERNORS - UNIVERSITY - BACHELOR OF SCIENCE, HEALTH INFORMATION MANAGEMENT

**SAI GELVI** - UT AUSTIN HEALTH AND SOCIETY CLASS - BMHC WEEKLY NEWSLETTER SUBMISSION

**GRACIE JOHNSON** - UT AUSTIN HEALTH AND SOCIETY CLASS - BMHC WEEKLY NEWSLETTER SUBMISSION

**SABRINA SHRESTHA** - UT AUSTIN HEALTH AND SOCIETY CLASS - BMHC WEEKLY NEWSLETTER SUBMISSION

**KIERRA HOWARD** - UT AUSTIN HEALTH AND SOCIETY CLASS - BMHC WEEKLY NEWSLETTER SUBMISSION

**TRACY KHONG** - UT AUSTIN HEALTH AND SOCIETY CLASS - BMHC WEEKLY NEWSLETTER SUBMISSION

**MORGAN BROWN** - UNIVERSITY OF TEXAS, SCHOOL OF PUBLIC AFFAIRS - BMHC COMMUNICATIONS BEST PRACTICES DOCUMENT

**SASHRICA MANOJ KUMAR** - UNIVERSITY OF TEXAS, HEALTH LEADERSHIP APPRENTICESHIP - UPDATING BMHC'S MEDIA LIST

**MADISON MCLARRY** - TEXAS STATE UNIVERSITY AT SAN MARCOS - GRANTS

**TYLER M. KILES** - UT AUSTIN COLLEGE OF PHARMACY - QUALITY CONTROL STUDY, DIABETES PATIENT EDUCATION COURSES

**MICHAEL OGU** - UT AUSTIN COLLEGE OF PHARMACY - VOLUNTEER

**NICHOLAS GRAMMER** - UT AUSTIN COLLEGE OF PHARMACY - VOLUNTEER

**TYLER MARIE KILES, PHARMD, BC-ADM** - PROFESSOR UT AUSTIN-COLLEGE OF PHARMACY - THE UNIVERSITY OF MEMPHIS SCHOOL OF PUBLIC HEALTH - DIABETES EDUCATION OPTIMIZATION

# BMHC INTERNS

# BOARD MEMBERS



**Rolando Garza**  
Former Deputy Executive Commissioner  
Texas Health and Human Services  
Commission



**Dr. Michael Williams, DNP, FNP-BC**  
APRN - Internal Medicine  
APRN - HIV-PrEP



**Dr. Wendell Williams MD**  
Physician  
Internal Medicine and Cardiology



**Carlton Inniss**  
Practice Management  
Clinical Operations



**Rev. Jordan Mkwana**  
Sr. Pastor - Metropolitan A.M.E.  
Faith-Based Relations



**Edwin Cummings**  
Research and Clinical Trials  
Men's Ministry - St. James Baptist



**Michael N. Weaver Jr., MS**  
Associate Director of Donor and  
External Relations at UT-Austin



**Ursula Hawthorne, MSN, RN**  
Adult-Gerontology  
Nurse Practitioner



**Evan Porter, RN BSN**  
Texas Nurses Association  
Government Affairs committee

# BMHC

*Care You Can Trust*

**BMHC** exists to lower barriers for successful healthcare by removing burdens men of color commonly experience such as scheduling, finances, and coordination between providers.

The name Black Men's Health Clinic was chosen to deliberately reveal the apparent inequities black men experience and "it" represents our unwavering commitment to addressing them.

BMHC is here to ensure the longevity and quality of life for all men of color by elevating them to a priority and providing resources designed to best aid them.

**Thank you for supporting this first-of-its-kind health clinic that addresses the long standing care gaps for these men.**



	A	B	C
1	<b>BLACK</b> <b>MEN'S HEALTH CLINIC</b>	COMMUNITY ADVOCACY ROLES (MOUs)	
2			
3	Influence	Name of Organization	Role
4	County	Austin/Travis County Food Plan	Community Advisory Committee
5	County	Austin/Travis County Re-entry Roundtable	Advisory and Coordinating Committee Member
6	County	Public Health Commission	Chair
7	County	Travis County Commissioners Court, Precinct 1	East Travis County Health & Wellness Collaboration (Chair)
8	County	Travis County Mental Health Public Defender's Office	Reentry Workgroup Member
9	County	Sobering Center	Board of Directors
10	County	Travis County Commissioners Court, Precinct 1	Health Advisory Committee (Chair)
11	County	Travis County Resource Mapping Collaborative	Advising Member
12	Local	100 Black Men	Health Committee
13	Local	American Youthworks	Board Member
14	Local	AISD District Advisory Council (DAC)	Advisory Member
15	Local	Austin ECHO	Continuum of Care Homelessness Response System Leadership Council (Health Advocate Seat)
16	Local	Climate Pollution Reduction Grant Community & Stakeholder Advisory Group	Advisory Member
17	Local	Bastrop Black Men's Alliance	Advisory Member
18	Local	Black Leaders Collective	Health Advocacy Group Member
19	Local	City of Austin	Electric Vehicle Charging Access & Equity Group Member
20	Local	City of Austin Equity-Based Preservation Plan	Community Ambassador Cohort
21	Local	City of Austin Fatherhood	Housing Program Representative
22	Local	City of Manor Health Department	Lead
23	Local	East Communities YMCA	Community Advancement Committee
24	Local	Greater Austin Area My Brother's Keeper Initiative	Post Secondary Education and Workforce Placement Committee
25	Local	GUD LIFE Advisory Committee	Advisory Committee
26	Local	Hungry Hill Foundation	Board of Directors
27	Local	Manor ISD	Special Education Parent Advisory Committee (SEPAC)
28	Local	Multifamily Impact Council	Advisory Board
29	Local	National Black MBA Association - Austin Chapter	VP of Administration and President-Elect
30	Local	University of Texas - Texas Center for Equity and Promotion (TexCEP)	Advisory Committee (Community Engagement Working Group)
31	Local	University of Texas School of Nursing	AMEN Program Representative
32	Local	Unparalleled Preparatory Academy	Board of Directors
33	National	American YouthWorks	Board of Directors
34	National	Emancipation Credit Union	Advisor
35	Regional	Capitol Area Council Boy Scouts	Executive Committee & Strategic Vice Chair
36	Regional	Central Texas African American Family Support Conference	2024 Planning Committee
37	Regional	Central Texas Fatherhood Coalition	Relaunch Committee

**BLACK MEN'S HEALTH CLINIC  
OPERATIONAL PARTNERS & SUPPORTERS**

<b>PROGRAM SECTION</b>	<b>BMHC COMMUNITY RELATIONSHIPS</b>	<b>NAME OF SUPPORTERS</b>	<b>BMHC RELATIONSHIP WITH THE SUPPORTERS</b>
<b>PROGRAM OFFERED:</b>			
1.1	<b>DON'T SWEAT THE DETAILS" CARE COORDINATION &amp; SERVICES NAVIGATION</b>	See Physical, Behavioral, and Social Determinant providers list	<ol style="list-style-type: none"> <li>1. Services rendered at no charge to BMHC</li> <li>2. Service fees rendered to clients are often lowered (as needed) to enhance self-care</li> <li>3. Piloting new delivery methods often hindered at their other sites</li> <li>4. Direct engagement at every echelon to mitigate mission creep</li> </ol>
[			
1.2	<b>HEALTHY CUTS" BARBERSHOP PROGRAM</b>	St. David's Foundation	<ol style="list-style-type: none"> <li>1. Covers up to 1,400 haircut credits at \$25</li> <li>2. Creates barbershop comfortability of reimbursement for labor services rendered as part of the health incentivization program</li> </ol>
1.3	<b>"WE GOT YOU" UNHOUSED DIVERSION PROGRAM</b>	Austin Public Health	<ol style="list-style-type: none"> <li>1. ECHO initially covered diversion funding via a \$25,000 mini-grant with plans to be incorporated into a 5-year permanent support housing collaboration launch in 2024</li> </ol>

PROGRAM SECTION	BMHC COMMUNITY RELATIONSHIPS	NAME OF SUPPORTERS	BMHC RELATIONSHIP WITH THE SUPPORTERS
			2. Roughly \$10,000 from Austin Public Health's contract is reallocated for this program.
1.4	<b>"WHO GOT NEXT" ATHLETICS SUPPORT PROGRAM</b>	Austin Public Health, B Kingz Social League, J UNO Elite, Manor Knights Youth Association	<p>1. Austin Public Health provides outside-the-clinic support with concussion and blood pressure screenings with teams and their players prior to their game. Doing so helps create a heightened level of care and safety for both the players and the organizations partnered with.</p> <p>2. In recognition of the importance of health awareness in sports BMHC serves as title sponsor for enhanced outreach and community engagement with Kingz Social League and J UNO Elite</p>
1.5	<b>LET'S GET IT" VOLUNTEER/ INTERNSHIPS/ EXTERNSHIPS PROGRAM</b>	UT Austin Dell Medical School Health Leadership Apprentice Program engAGE Travis County Huston-Tillotson University STEM Research Scholars	<p>Lists BMHC as an internship opportunity for interested medical students</p> <p>Lists BMHC as a volunteer opportunity for interested 55+ individuals</p> <p>Lists BMHC as a research opportunity</p>

PROGRAM SECTION	BMHC COMMUNITY RELATIONSHIPS	NAME OF SUPPORTERS	BMHC RELATIONSHIP WITH THE SUPPORTERS
		UT Austin LBJ School of Public Affairs (Impact Corps / Impact Factory)	Lists BMHC as a research opportunity
		Travis County Youth Summer Employment Program	Lists BMHC as an opportunity for youth 14-17 at \$15 an hour for 5-week intervals at 4-hours a day
		Texas State University Public Health	Lists BMHC as an internship, externship, and research opportunity
		UT Austin School of Law	
		UT Austin School of Pharmacy	
		UT Austin School of Social Work	
		UT Austin Population Health	
		Austin Community College – Health Sciences	
		Western Governors University	
		City of Austin VISTA Program	
		UT Austin Work Study Program	
		ACC – Human Services	
1.6	<b>“WE SEE YOU” AWARDS PROGRAM</b>	US Presidential Volunteer Award program:  a. Bronze b. Silver c. Gold	<u>Kids (5-10 years)</u>  Bronze: 26-49 hours Silver: 50-74 hours Gold: 75+ hours Lifetime Achievement: 4,000

PROGRAM SECTION	BMHC COMMUNITY RELATIONSHIPS	NAME OF SUPPORTERS	BMHC RELATIONSHIP WITH THE SUPPORTERS
		d. Lifetime	<u>Teens (11-15 years)</u>  Bronze: 50-74 hours Silver: 75-99 hours Gold: 100+ hours Lifetime Achievement: 4,000  <u>Young Adults (16-25 years)</u>  Bronze: 100-174 hours Silver: 175-249 hours Gold: 250+ hours Lifetime Achievement: 4,000  <u>Adults (26+ years)</u>  Bronze: 100-249 hours Silver: 250-499 hours Gold: 500+ hours Lifetime Achievement: 4,000
		Founder’s Award (2023)	Recognizes individuals whose direct role ensured critical funding and crucial services to positively impact clients and community needs were rendered
		President’s Award (2024)	Recognizes visionaries who have ensured BMHC strategically made the right choices and decisions to positively impact clients and meet community needs
		World Changer Award (2024)	Recognizes connectors to resources and influencers positively impacting BMHC’s ability to community needs
		BMHC Certificate of Commendation	Recognize individuals and organizations directly supporting BMHC and its mission via self-initiative
PARTNERSHIPS / COLLABORATIONS			



PROGRAM SECTION	BMHC COMMUNITY RELATIONSHIPS	NAME OF SUPPORTERS	BMHC RELATIONSHIP WITH THE SUPPORTERS
2.1	PUBLIC HEALTH	Affordable Dentures	Basic teeth screenings at reduced rates to support non-insured clients
		American Heart Association	Provided 25 blood pressure machines for clients identified in need by BMHC providers, as well as, an exercise bike (up to \$1,200) for utilization by clients as referred by providers
		AIDS Healthcare Foundation	Provides physical health services at BMHC Mondays and Thursdays
		Dollar For	UT Austin chapter provides support with screening and submit paperwork for clients who have outstanding debt for services received at nonprofit hospitals to have debt reduced or forgiven within the past 8-month
		CommunityCare	A federally qualified health center providing basic physical health services at BMHC Tuesdays and growing to two days for Travis County residents
		Austin Health Commons	Ongoing discussions about healing circles and non-traditional health approaches
		Dell Medical School	Ongoing discussions about cancer related services to render at BMHC
		Lone Star Circle of Care	A federally qualified health center providing health services at their locations for Williamson County residents
		OmPractice	Provides online (live and pre-recorded) yoga type classes for free to veterans with sessions automatically upload to their Department of

PROGRAM SECTION	BMHC COMMUNITY RELATIONSHIPS	NAME OF SUPPORTERS	BMHC RELATIONSHIP WITH THE SUPPORTERS
			Veterans Affairs health records
		Seton Ascension Hospital	Refers Emergency Room patients to BMHC for basic physical health needs not specific to the ER’s role
		Sickle Cell Association of Texas (Marc Thomas Foundation)	Sickle cell screenings, health plans, and information
		The Smile Doc ATX	Teeth services particularly for medical access program enrolled BMHC clients
		UT School of Pharmacy	Provides hands-on discussions with clients about any prescriptions given
		Alliance for African American Health	Provides opportunities for workout circles amongst men for self-accountability towards staying fit. Black-woman owned.
PARTNERSHIPS / COLLABORATIONS			
2.2	Behavioral Health	Contigo Wellness	Provides reduced services for people of color, primarily for the Latinx population. Hispanic-woman owned.
		Integral Care	A federally qualified health center providing services to Travis County residents
		Texas Christian Recovery and Other Support Services (TXCROSS)	Provides reduced services for people of color, primarily for the black population. Black-woman owned.
		UT School of Pharmacy	Provides hands-on discussions with clients about any prescriptions given
		Whole Life Priorities	Provides reduced services for people of color, primarily for the black population. Black-male owned.
		Dr. Calvin Kelley & Associates	Black male therapist providing reduced services

PROGRAM SECTION	BMHC COMMUNITY RELATIONSHIPS	NAME OF SUPPORTERS	BMHC RELATIONSHIP WITH THE SUPPORTERS
			for people of color, primarily for the black population.
		The Man in Me	Provides monthly Men's Health Workshops by certified black therapists monthly at BMHC
		Community Care Biobehavioral Research of Austin	Mental Health clinical trials access
<b>PARTNERSHIPS / COLLABORATIONS</b>			
2.3	<b>Social Determinant</b>	Goodwill of Central Texas	Support for job training and employment for clients in need
		United Way of Austin	Utilization of Connect ATX to receive referrals from non-HIPPA health entities and to refer for support outside of BMHC health partners
		Austin ECHO	Access to the Homeless Management Information System (HMIS) which is a database used to record and track client-level information on the characteristics and service needs of people experiencing homelessness
		Austin Areas Urban League Health & Wellness	Support for job training, employment, housing, etc.
		African American Youth Harvest Foundation	Provides hands-on service through school and community-based programs, to enhance the quality of life for African American and low-income youth and families
		Tomorrow's Promise Foundation	Helps youth, ages 7-19, discover the unique gifts they each have in order for them to grow into successful adults through interactive activities which promote self-awareness, confidence,

PROGRAM SECTION	BMHC COMMUNITY RELATIONSHIPS	NAME OF SUPPORTERS	BMHC RELATIONSHIP WITH THE SUPPORTERS
			health & wellness, and leadership
		Saffron Women's Trust Foundation	Coordinates support for women in financial need, will support BMHC clients with significant others and daughters
		Building Promise USA	Referring and enrollment of reentry individuals; to include, identification of individuals eligible for diversion support
		Hungry Hill Foundation	Referring and enrollment of unhoused individuals; to include, identification of individuals eligible for diversion support
		Queertopia	Referring and enrollment of LGBTQ+ unhoused individuals; to include, identification of individuals eligible for diversion support
		Walking By Faith Prison Ministries	Referring and enrollment of unhoused individuals; to include, identification of individuals eligible for diversion support
		Zoe's Safe Place	Housing support for unhoused BMHC clients
		J'KEID Transitional	Housing support for unhoused BMHC clients
		Caritas of Austin	Referring and enrollment of unhoused individuals; to include, identification of individuals eligible for diversion support
		Evolution of Health	Provides community runs / walks to inspire healthy communities
		American Youthworks	Programs supporting young adults complete their GED or High School Diploma, including certification training

PROGRAM SECTION	BMHC COMMUNITY RELATIONSHIPS	NAME OF SUPPORTERS	BMHC RELATIONSHIP WITH THE SUPPORTERS
			for health, agriculture, and other industries
		Austin – Travis County Sobering Center	Provides a safe place for publicly intoxicated individuals to sober up as an alternative to the emergency room or jail and, where appropriate, to provide a bridge to recovery.
		The Man In Me	Provides a monthly mens group style mental health session
		Manifest Homecare	Homecare agency for seniors
		Sendero Health Plans	Provides affordable quality healthcare coverage
		Workforce Solutions	Assistst with job training and placement
<b>PARTNERSHIPS / COLLABORATIONS</b>			
2.4	<b>Outreach</b>	Bro Brunch	Austin Justice Coalition's Bro Brunch brings Black men together in the community to celebrate Blackness, learn from one another and cultivate joy in a space that unpacks mental health, masculinity, identity and other issues
		100 Black Men of Austin	Officially listed on their shirts and marketing material, support with videography
		Travis County Mental Health Public Defender's Office	Listed as a resource and more hands-on referral support with Integral Care
		Austin- Travis County EMS	Listed as a resource and serve as a health resource hub
		Black Men of Bastrop	Leveraging BMHC to bring greater awareness of health

PROGRAM SECTION	BMHC COMMUNITY RELATIONSHIPS	NAME OF SUPPORTERS	BMHC RELATIONSHIP WITH THE SUPPORTERS
		Austin Public Library System	Provides knowledge, technology and inspiration to the Austin community through 20+ locations
		Hays Latino United	Coordinates health services and information for Hispanic population in Travis, Williamson and Hays counties
		Abundant Life Church	Partnering for BMHC satellite location.
		Austin EMS	Referring
		Austin ISD	Access to youth and their family for BMHC client services
		Manor Knights Youth Association	Access to youth for screenings and mental health support.
<b>PARTNERSHIPS / COLLABORATIONS</b>			
2.5	<b>SCHOLARLY RESEARCH / DATA/ ANALYSIS</b>	Mountain States Regional Genetics Network	Provides information focused on youth knowing adults often experience stress by supporting the needs of their children
		Austin Community College – Human Services	Internship/externship agreement with Health Sciences Department
		Texas State University / Public Health	5-year internship/externship agreement ending in 2028
		Texas Tobacco Free	BMHC personalized materials to promote reduced smoking, as well as, academic write-ups and various quit smoking support tools for clients. Previously located at University of Houston and now MD Anderson.
		University of Texas at Austin	Independent studies by students regarding business administrative filings,

PROGRAM SECTION	BMHC COMMUNITY RELATIONSHIPS	NAME OF SUPPORTERS	BMHC RELATIONSHIP WITH THE SUPPORTERS
		<ul style="list-style-type: none"><li>• Dell Medical School</li><li>• Population Health</li><li>• School of Law</li><li>• School of Pharmacy</li><li>• School of Social Work</li><li>• Center for Health Communications</li></ul>	practices, and paperwork to mitigate lawsuits, inconsistencies, and enhance intended outcomes to clients
		Western Governors University	
		City of Austin Vista Program UT Austin Work Study	
		UT Walker Leadership Program	