

Proposed Temporary Construction Easement to the City of Pflugerville, 7600 Delwau Ln., Austin, TX 78725

Council Meeting: 1/30/2025
File ID: 24-6513



FINANCIAL SERVICES DEPARTMENT

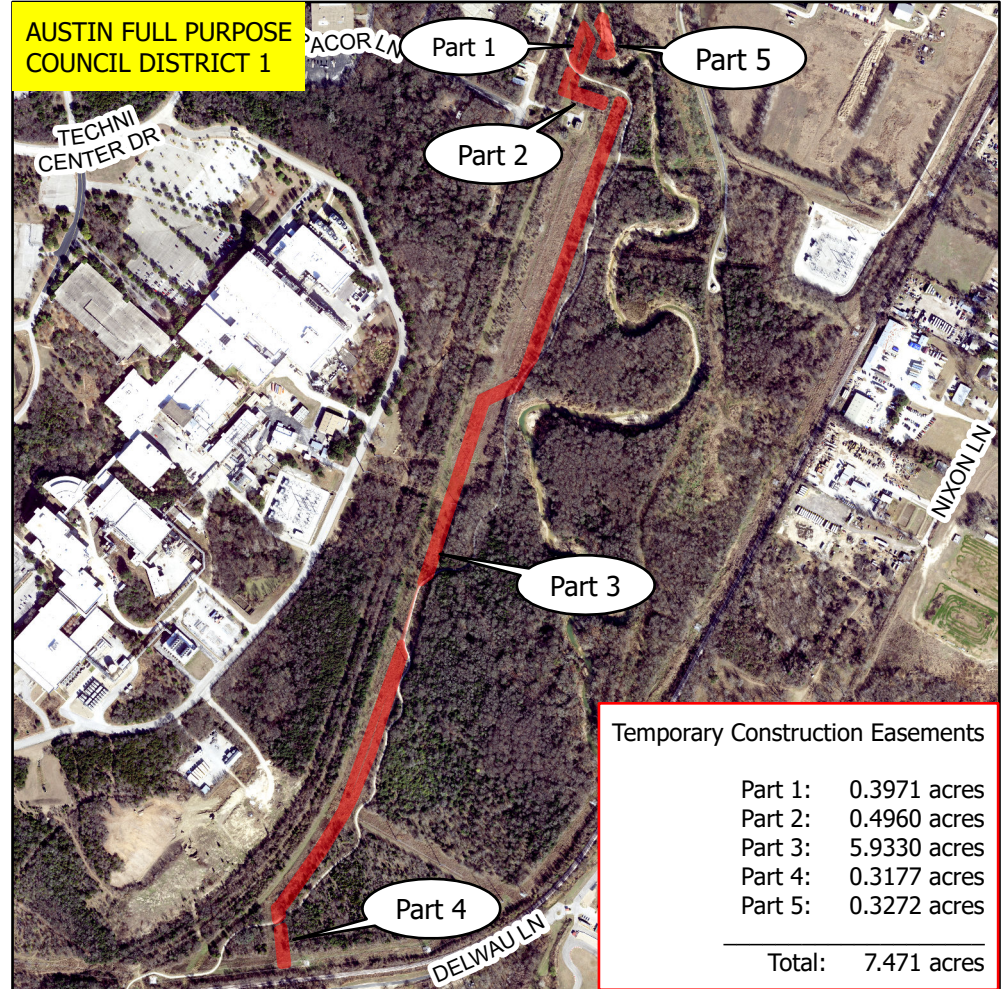
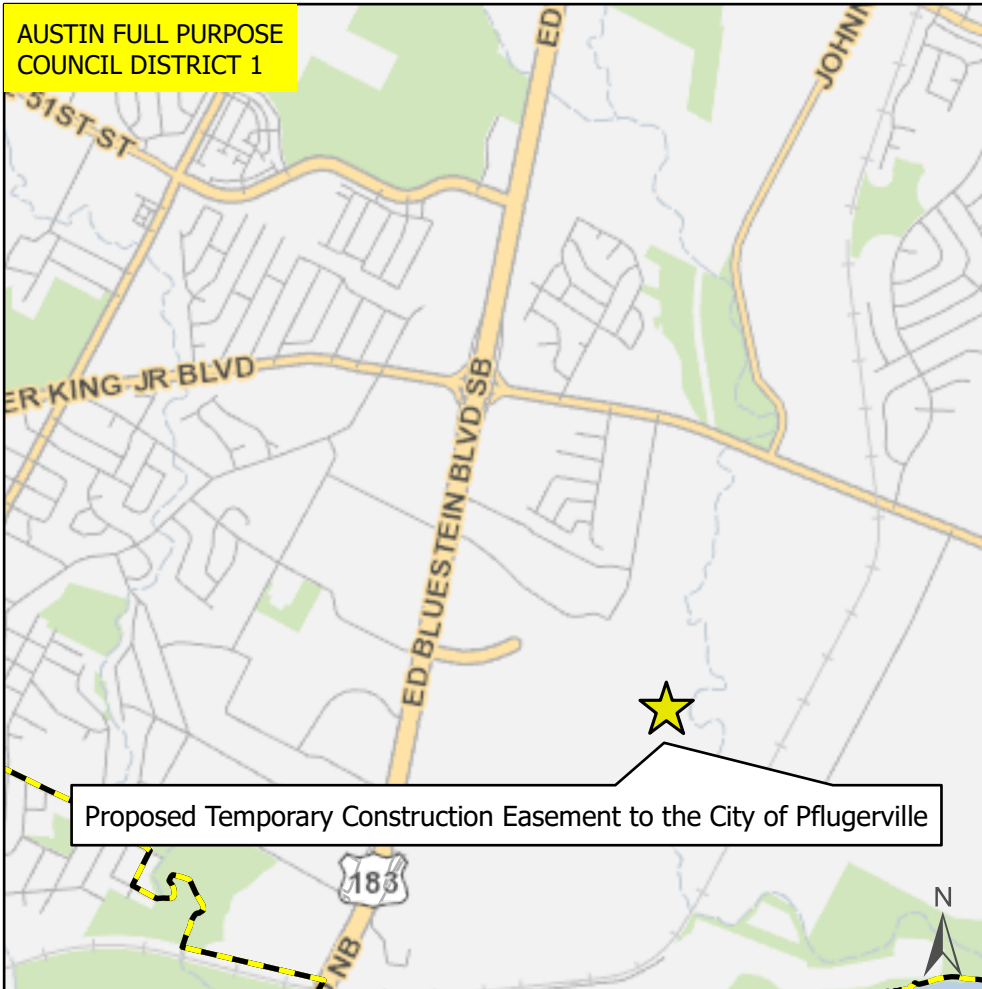
This product is for informational purposes and may not have been prepared for or be suitable for legal, engineering, or surveying purposes. It does not represent an on-the-ground survey and represents only the approximate relative location of property boundaries.

This product has been produced by the Financial Services Department for the sole purpose of geographic reference. No warranty is made by the City of Austin regarding specific accuracy or completeness.

Produced by Robert Starke - 12/18/2024

City Council Districts

Nearmap US Vertical Imagery by ESRI



Temporary Construction Easements

Part 1:	0.3971 acres
Part 2:	0.4960 acres
Part 3:	5.9330 acres
Part 4:	0.3177 acres
Part 5:	0.3272 acres

Total: 7.471 acres

