



EXHIBIT A

MEMORANDUM

To: Traffic Study Files
From: Austin Transportation and Public Works
Date: November 24, 2025
Subject: Reduced Speed School Zone Investigation
Location: Wilderness Drive



Date(s) of Previous Investigation: None

A traffic engineering investigation has been conducted to determine if a reduced speed school zone is appropriate on Wilderness Drive for students attending Cedar Creek Elementary School and Hill Country Middle School.

The following information was collected and analyzed for this determination.

General Conditions

The street of concern is located within the Bee Cave Woods subdivision, a single-family neighborhood east of Walsh Tarlton Lane.

Wilderness Drive functions as an east-west Level 1 street between Walsh Tarlton Lane and Honey Tree Lane with one travel lane in each direction. Cedar Creek Elementary School and Hill Country Middle School are located west of Walsh Tarlton Lane and south of Bee Caves Road.

Cedar Creek Elementary School

The Eanes Independent School District (EISD) opened Cedar Creek Elementary School in 1978. Currently, enrollment is at approximately 527 students. The school site is located on the west side of Walsh Tarlton Lane with one main entrance on Pinnacle Road. The parent drop-off utilizes the bus loop and the parking lot west of the bus loop on Pinnacle Road. The bus loop is located in front of the school on Pinnacle Road. Students walking and biking to Cedar Creek Elementary School primarily access the main entrance on Pinnacle Road.

Hill Country Middle School

The Eanes Independent School District (EISD) opened Hill Country Middle School in 1975. Currently, enrollment is at approximately 1,010 students. The school site is located on the west side of Walsh Tarlton Lane with one main entrance on Walsh Tarlton Lane. Students also utilize the driveway from Dusky Thrush Trail to access the entrance on the side of the school. The parent drop-off utilizes the parking lot south of the bus loop on Walsh Tarlton Lane. The bus loop is located in front of the school on Walsh Tarlton Lane. Students walking and biking to Hill Country Middle School primarily access the main entrance on Walsh Tarlton Lane and the side entrance from Dusky Thrush Trail.

Existing Conditions

Wilderness Drive has an approximate 23 feet wide cross section that includes two travel lanes, one in each direction. There is one marked bicycle lane at Walsh Tarlton Lane for approximately 115 feet in the eastbound direction before cyclists are required to merge and share the roadway with vehicular traffic. There are shared arrows on Wilderness Drive in each direction to bring more awareness that there may be bicyclists using the travel lanes.

Proximity of Pedestrian Crossings to the School

Pedestrian volume counts were observed in the morning and afternoon in November 2025. Although there is sidewalk present on the south side of Wilderness Drive, it is narrow due to a handrail so pedestrians were frequently observed needing to walk in the street adjacent to the sidewalk when passing others. There was also a significant volume of students bicycling along Wilderness Drive in the travel lanes given the sidewalk is too narrow to accommodate them.

Pedestrian Volumes

It was observed that there were more than 90 pedestrians utilizing Wilderness Drive during the morning peak and more than 50 pedestrians utilizing Wilderness Drive during the afternoon peak. During both the morning and afternoon peaks, a significant number of these pedestrians were students bicycling in the travel lanes of Wilderness Drive.

Sight Distance

There are no sight distance concerns for the school zone proposed on Wilderness Drive.

Sidewalks

Continuous sidewalk is present on the south side of Wilderness Drive between Walsh Tarlton Lane and Old Walsh Tarlton. However, given the narrow width of the sidewalk due to railing, pedestrians were frequently observed walking or bicycling in the street next to the sidewalk.

Recommendation

Based on the analysis of the information provided in the above sections:

A reduced speed school zone of 15 miles per hour (mph) should be installed on Wilderness Drive from Walsh Tarlton Lane to Old Walsh Tarlton.

Figure 1 presents the investigation area and limits of the proposed reduced speed school zone on Wilderness Drive.

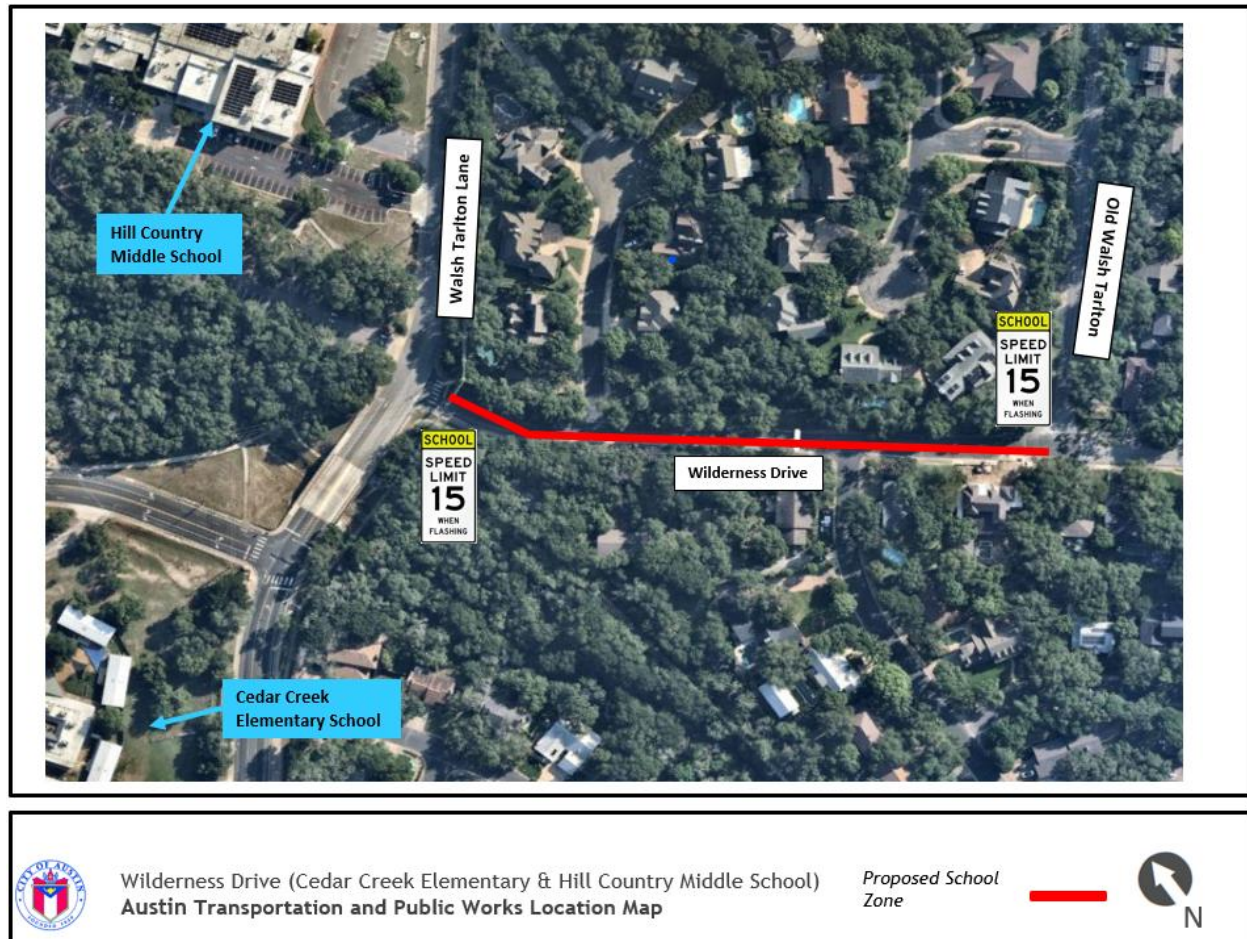


Figure 1: Proposed School Zone on Wilderness Drive