

**2022 Recommended Land Management for the
Water Quality Protection Lands
Austin, Texas**

**Book 2
Figures**

Table of Contents

Figure 1: Water Quality Protection Lands management units based on watersheds.	1
Figure 2: Soil types of Barton Creek management unit.	2
Figure 3: Soil types of Barton Creek (Shudde Fath) management unit.	3
Figure 4: Soil types of Bear Creek management unit (eastern side).	4
Figure 5: Soil types of Bear Creek management unit (western side).	5
Figure 6: Soil types of Bull Creek management unit.	6
Figure 7: Soil types of Little Barton Creek management unit.	7
Figure 8: Soil types of Little Bear Creek management unit.	8
Figure 9: Soil types of Onion Creek management unit.	9
Figure 10: Soil types of Slaughter Creek management unit.	10
Figure 11: Soil types of Slaughter Creek (Brodie Wild) management unit.	11
Figure 12: Soil types of Slaughter Creek (Mary Gay Maxwell) management unit.	12
Figure 13: Ecological sites of Barton Creek management unit.	13
Figure 14: Ecological sites of Barton Creek (Shudde Fath) management unit.	14
Figure 15: Ecological sites of Bear Creek management unit (eastern side).	15
Figure 16: Ecological sites of Bear Creek management unit (western side).	16
Figure 17: Ecological sites of Bull Creek management unit.	17
Figure 18: Ecological sites of Little Barton Creek management unit.	18
Figure 19: Ecological sites of Little Bear Creek management unit.	19
Figure 20: Ecological sites of Onion Creek management unit.	20
Figure 21: Ecological sites of Slaughter Creek management unit.	21
Figure 22: Ecological sites of Slaughter Creek (Brodie Wild) management unit.	22
Figure 23: Ecological sites of Slaughter Creek (Mary Gay Maxwell) management unit.	23
Figure 24: Land cover categories of Barton Creek management unit.	24
Figure 25: Land cover categories of Barton Creek (Shudde Fath) management unit.	25
Figure 26: Land cover categories of Bear Creek management unit (easter side).	26
Figure 27: Land cover categories of Bear Creek management unit (western side).	27
Figure 28: Land cover categories of Bull Creek management unit.	28
Figure 29: Land cover categories of Little Barton Creek management unit.	29
Figure 30: Land cover categories of Little Bear Creek management unit.	30
Figure 31: Land cover categories of Onion Creek management unit.	31
Figure 32: Land cover categories of Slaughter Creek management unit.	32
Figure 33: Land cover categories of Slaughter Creek (Brodie Wild) management unit.	33
Figure 34: Land cover categories of Slaughter Creek (Mary Gay Maxwell) management unit.	34
Figure 35: Treatment frequency map for Barton Creek management unit.	35
Figure 36: Treatment frequency map for Bear Creek management unit (eastern side).	36
Figure 37: Treatment frequency map for Bear Creek management unit (western side).	37
Figure 38: Treatment frequency map for Little Bear Creek management unit.	38
Figure 39: Treatment frequency map for Onion Creek management unit.	39
Figure 40: Treatment frequency map for Slaughter Creek management unit.	40
Figure 41: Treatment frequency map for Slaughter Creek (Mary Gay Maxwell) management unit.	41

WQPL Management Units Based on Watersheds

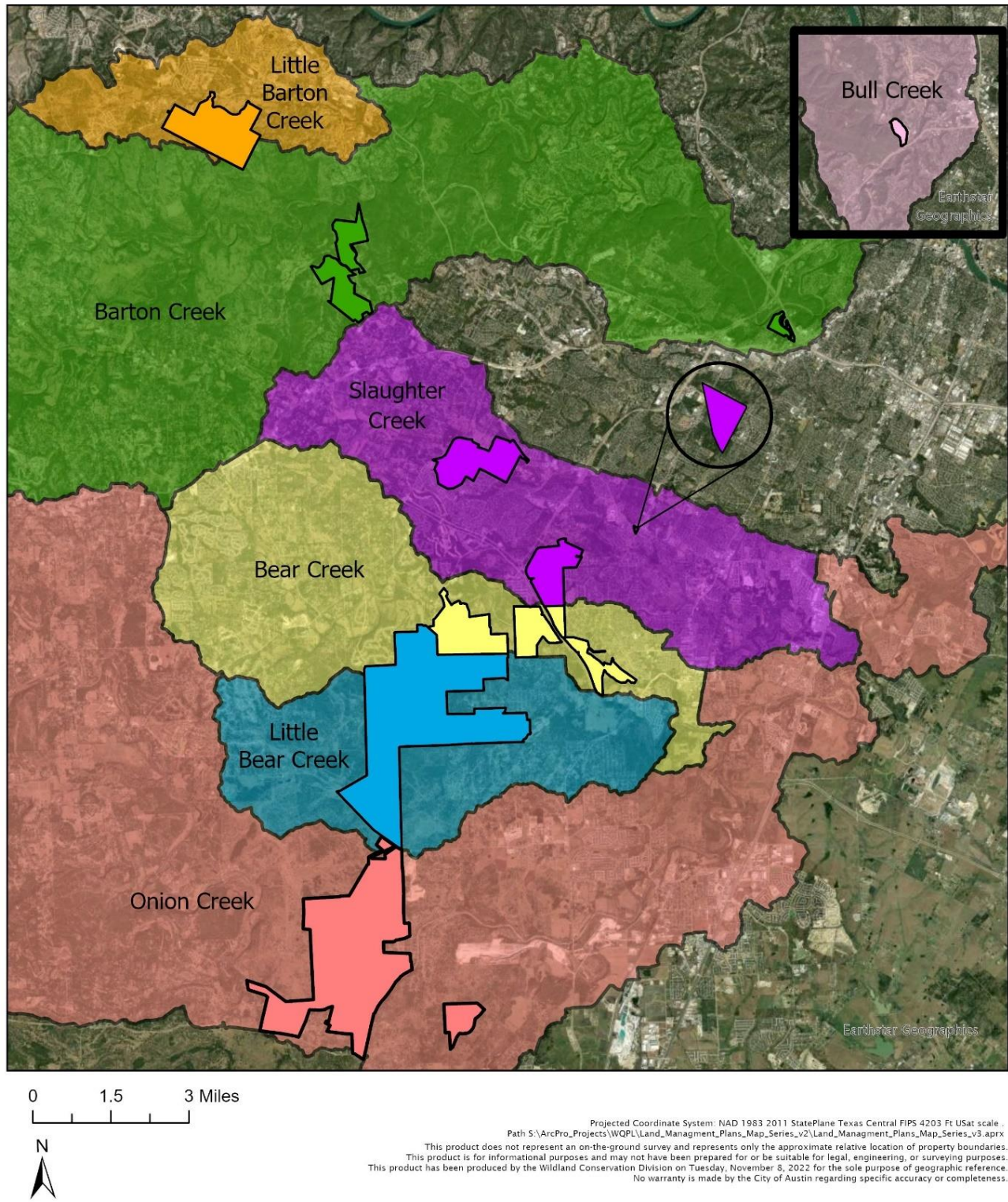


Figure 1: Water Quality Protection Lands management units located within watersheds.



Barton Creek

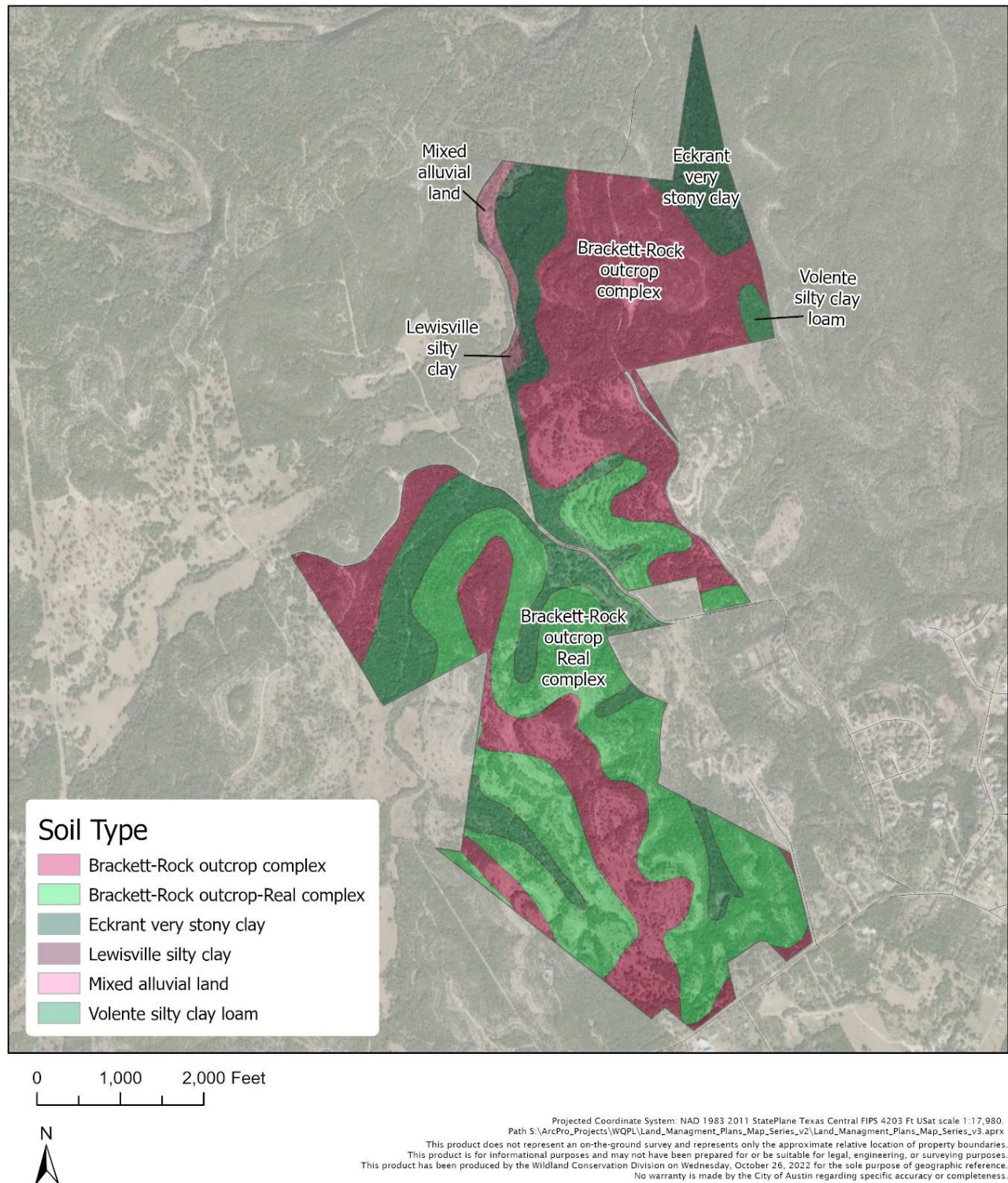


Figure 2: Soil types of Barton Creek management unit.



Barton Creek (Shudde Fath)

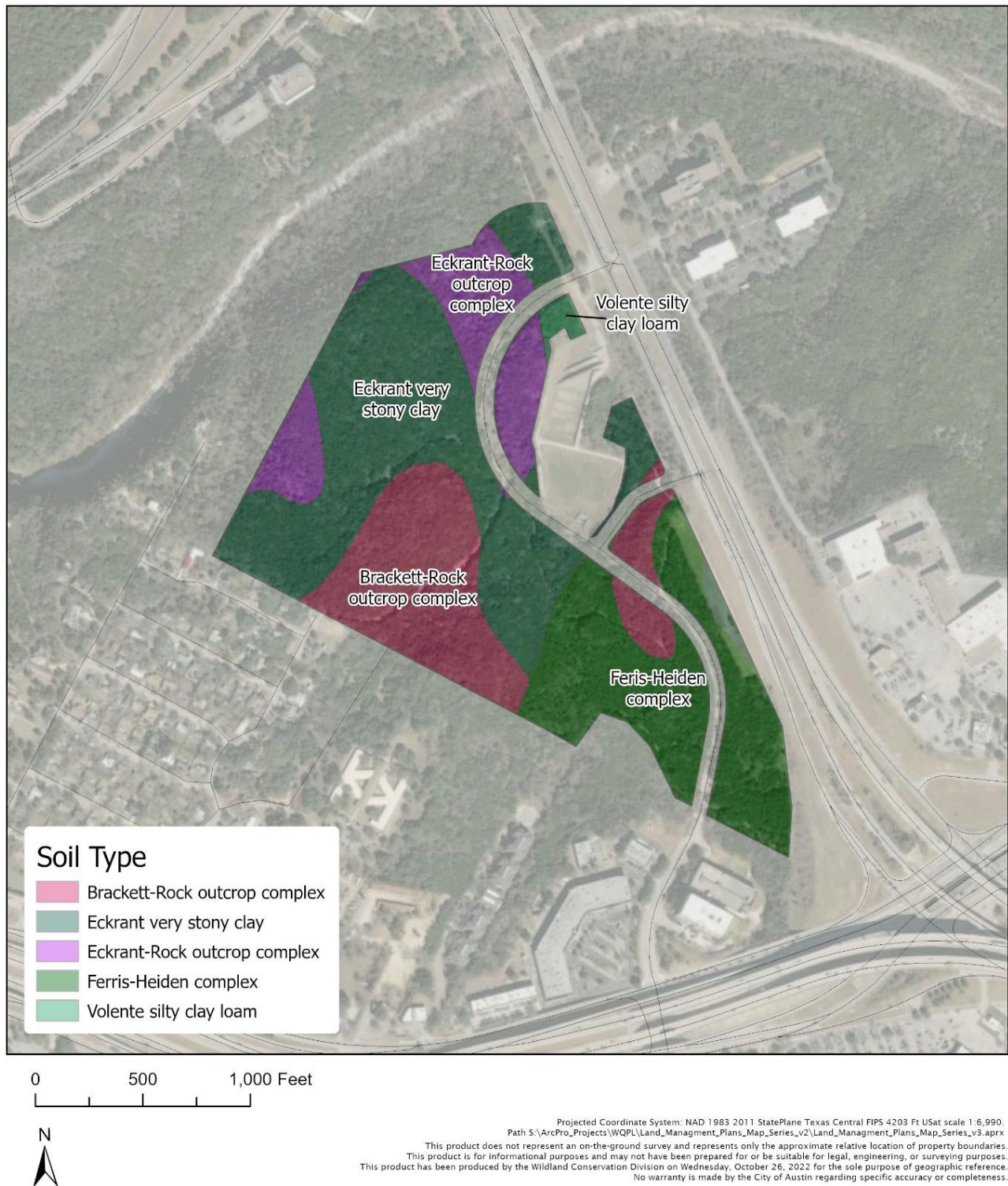


Figure 3: Soil types of Barton Creek (Shudde Fath) management unit.



Bear Creek (E)

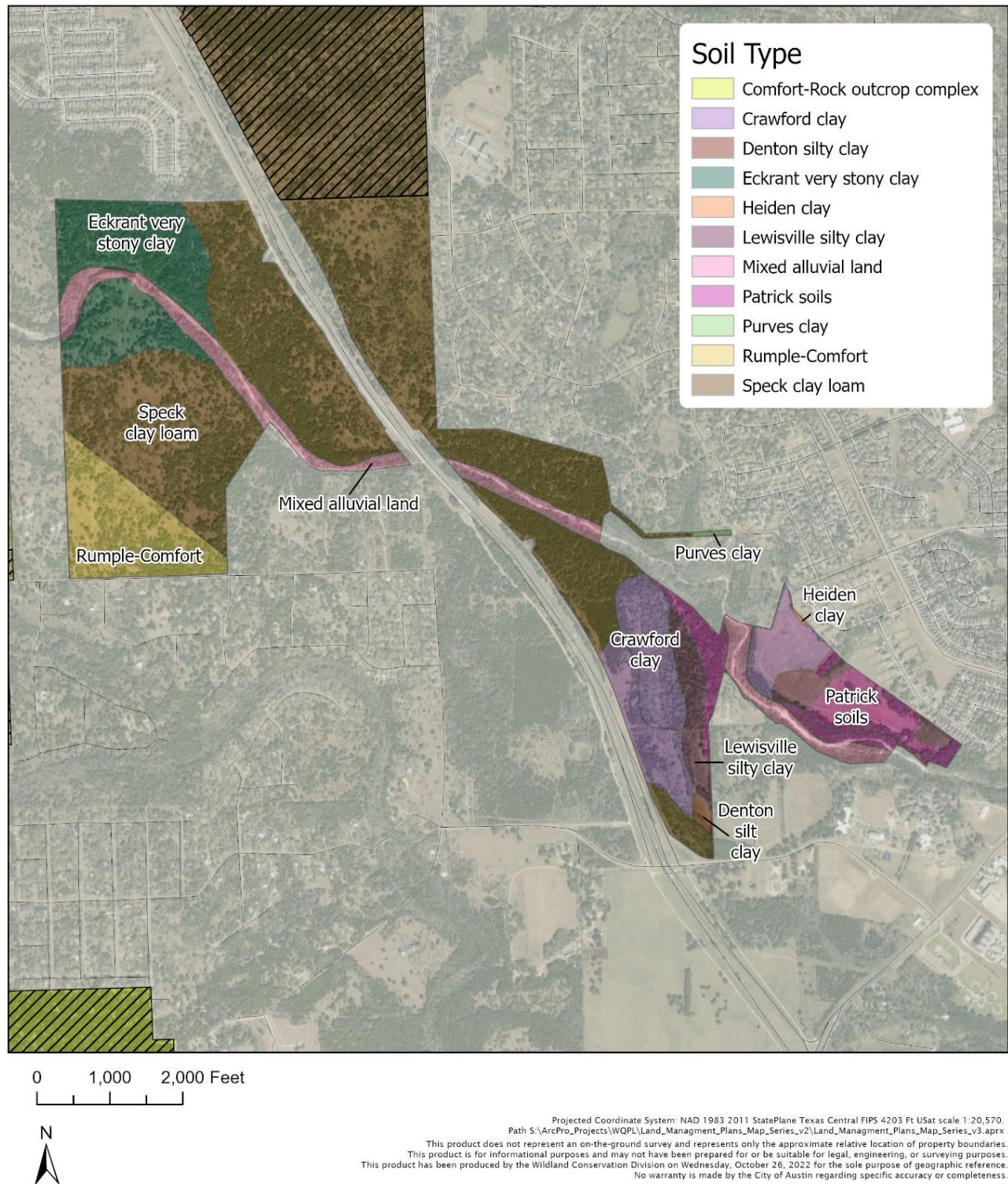


Figure 4: Soil types of Bear Creek management unit (eastern side).



Bear Creek (W)

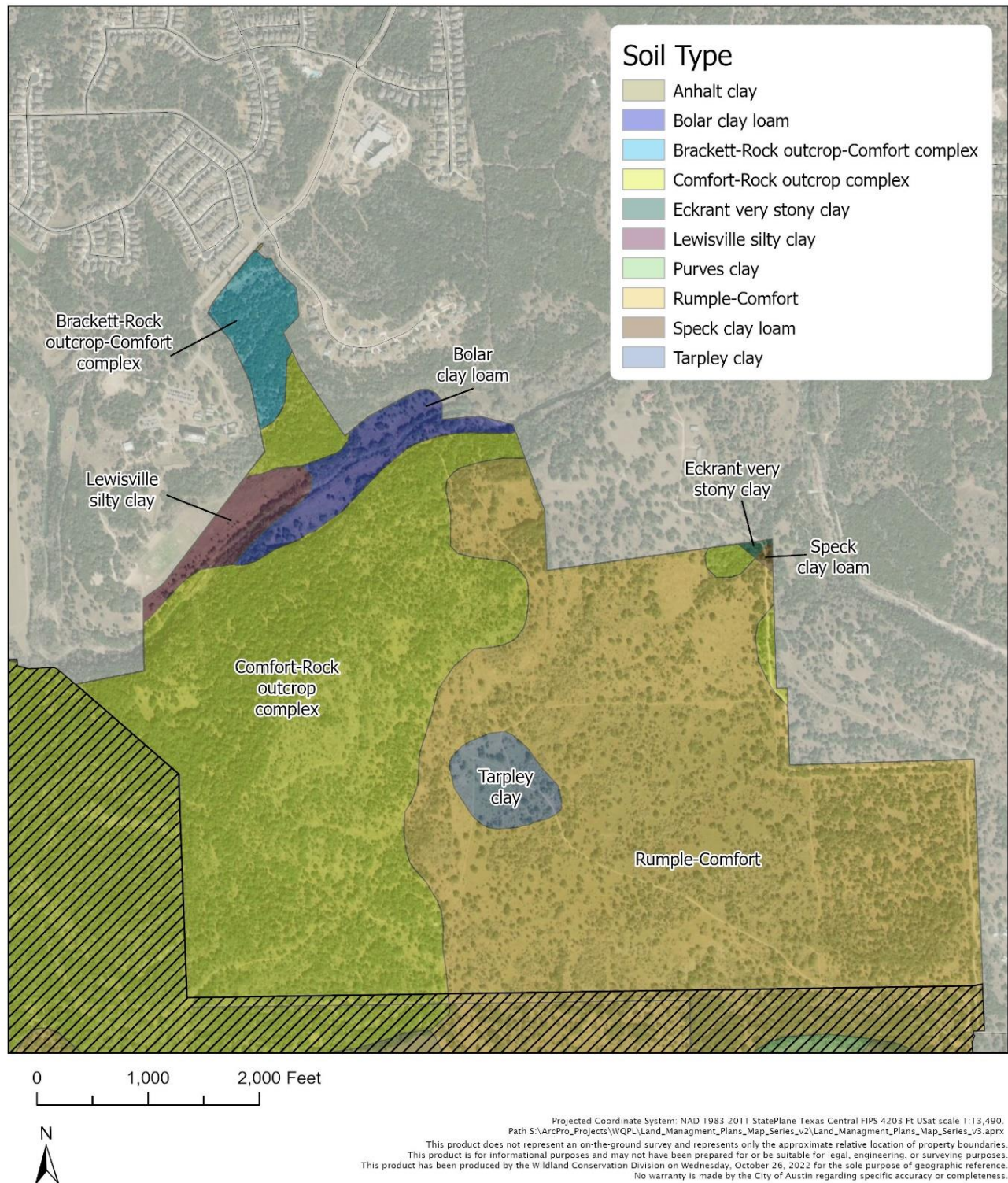


Figure 5: Soil types of Bear Creek management unit (western side).



Bull Creek

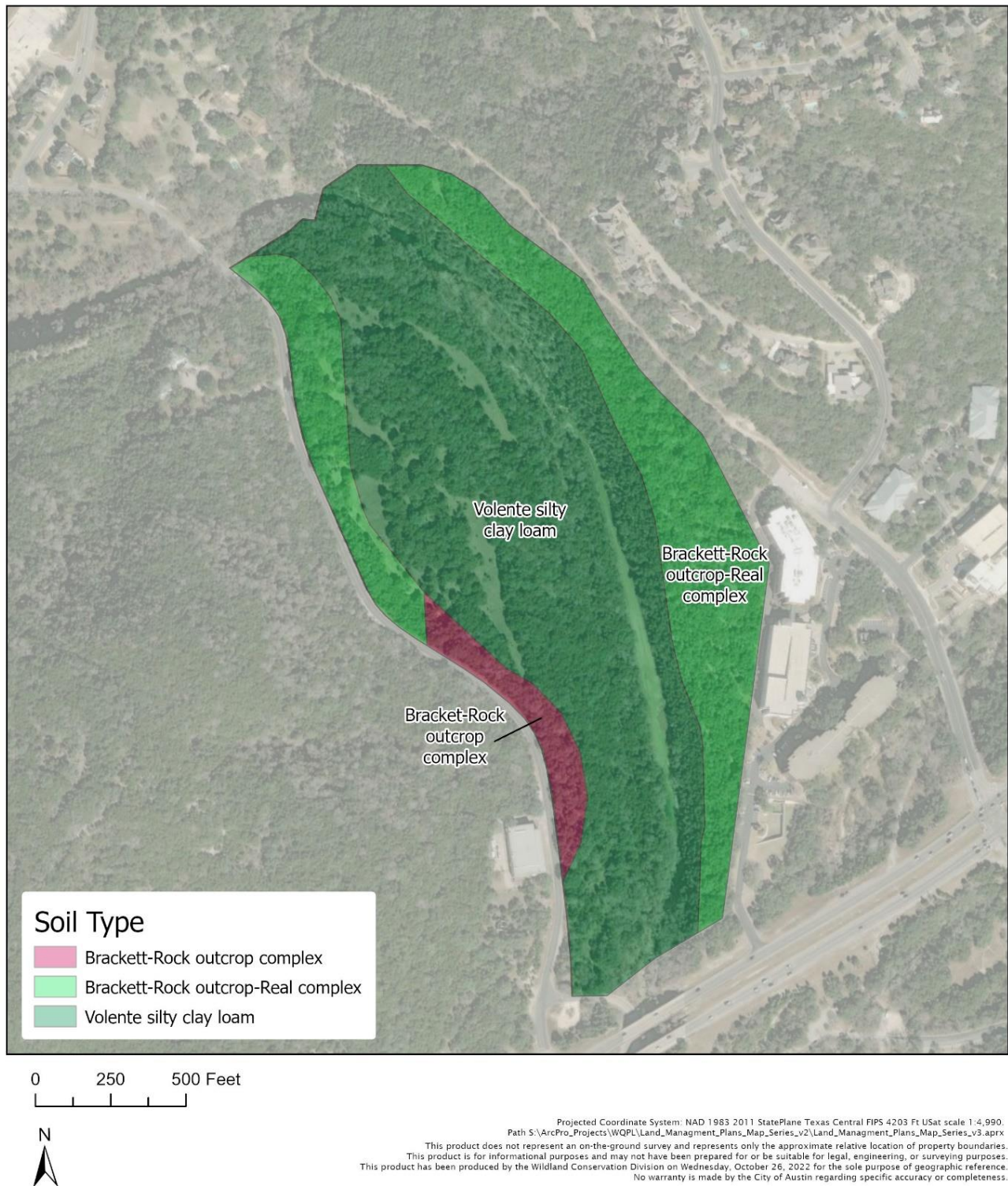


Figure 6: Soil types of Bull Creek management unit.



Little Barton Creek

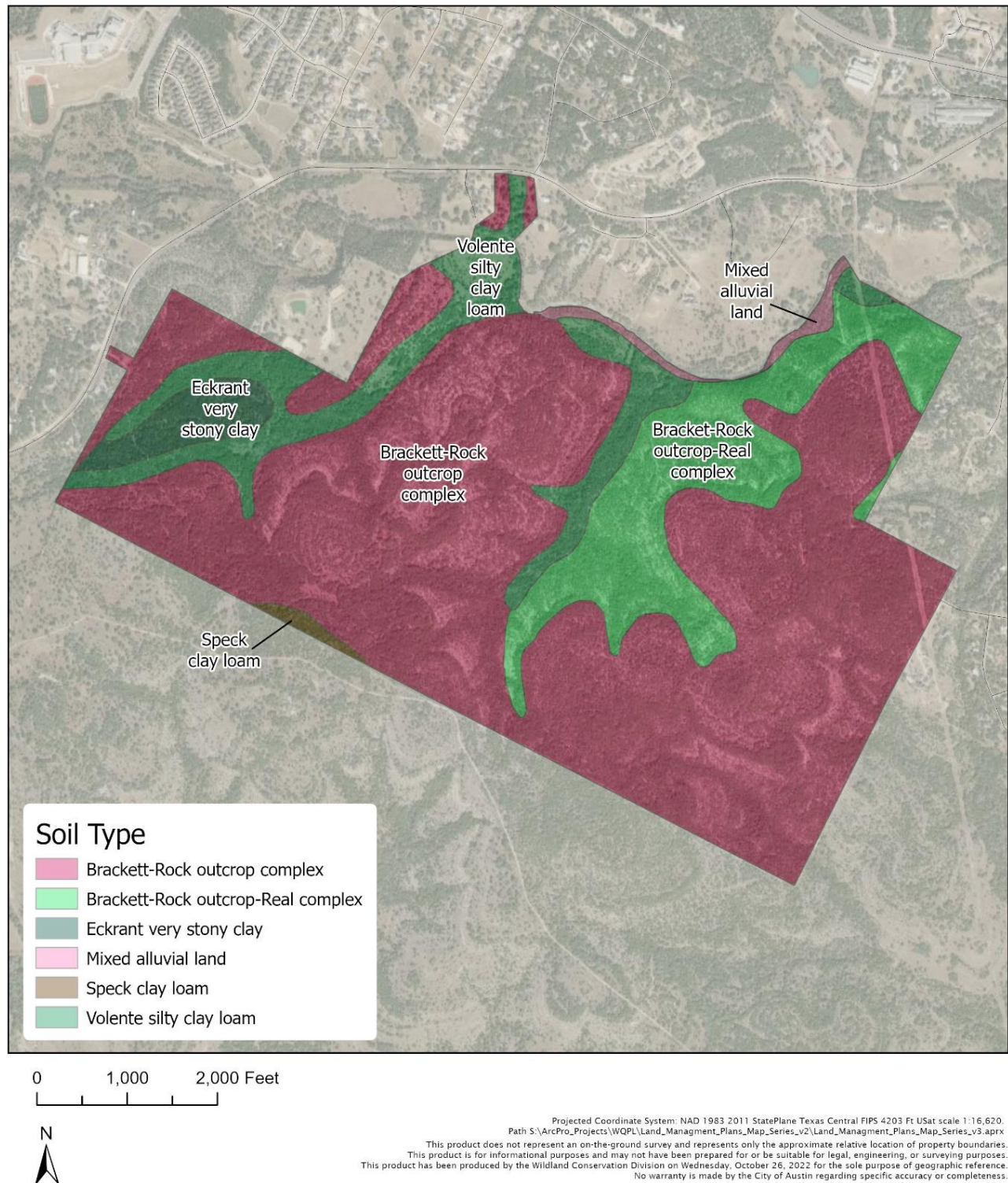


Figure 7: Soil types of Little Barton Creek management unit.



Little Bear Creek

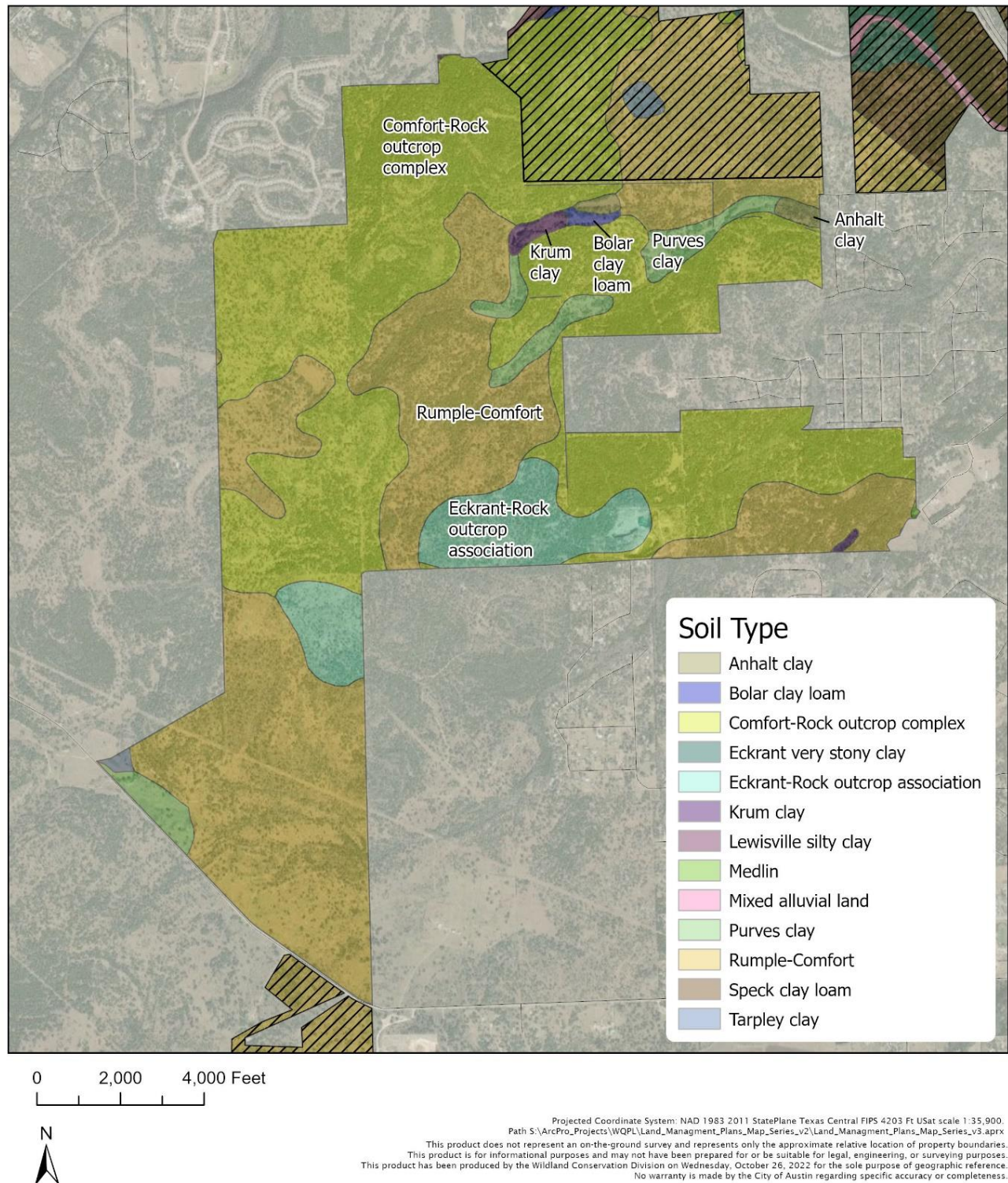


Figure 8: Soil types of Little Bear Creek management unit.



Onion Creek

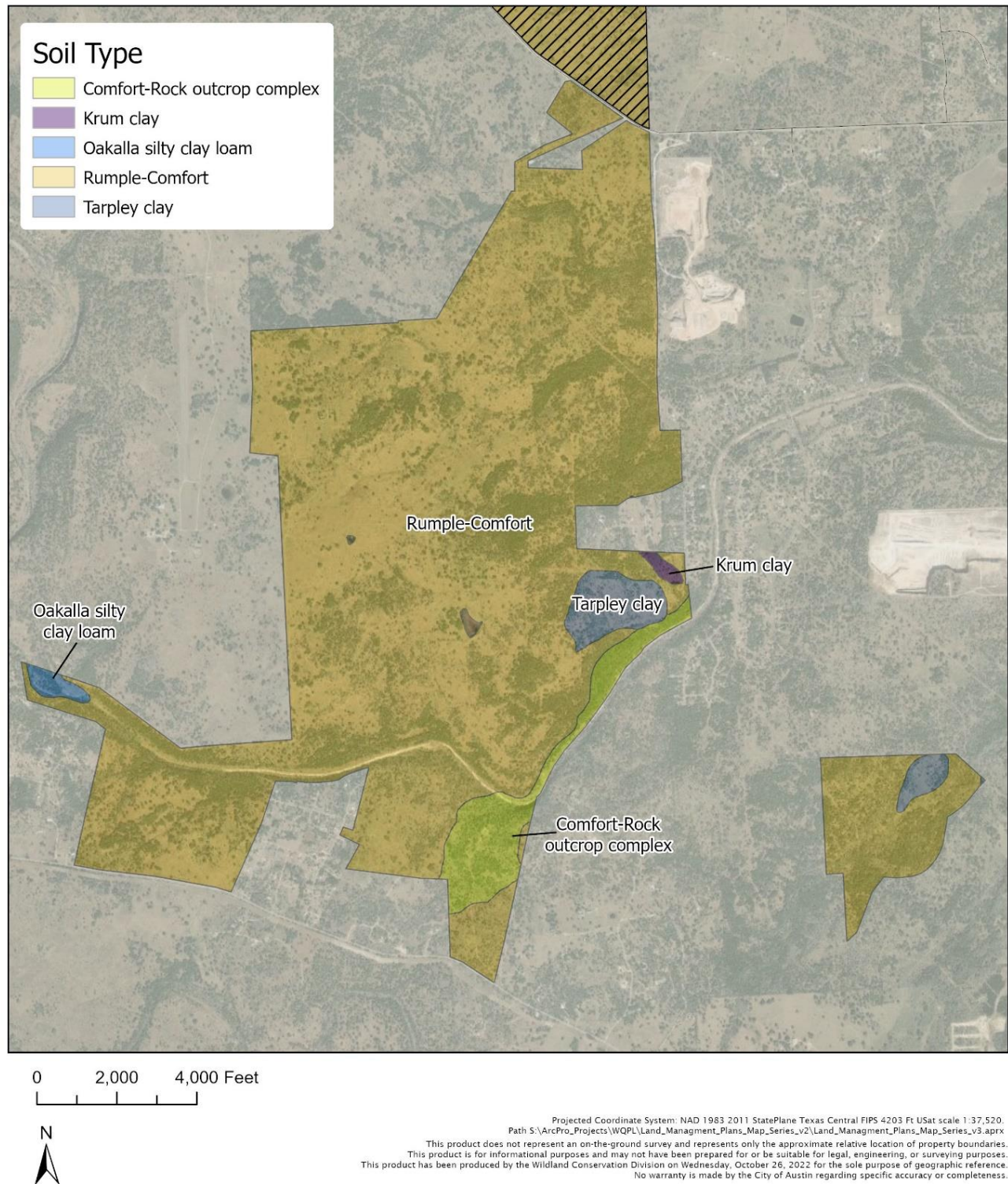


Figure 9: Soil types of Onion Creek management unit.



Slaughter Creek



Figure 10: Soil types of Slaughter Creek management unit.



Slaughter Creek (Brodie Wild)



Figure 11: Soil types of Slaughter Creek (Brodie Wild) management unit.



Slaughter Creek (MGM)

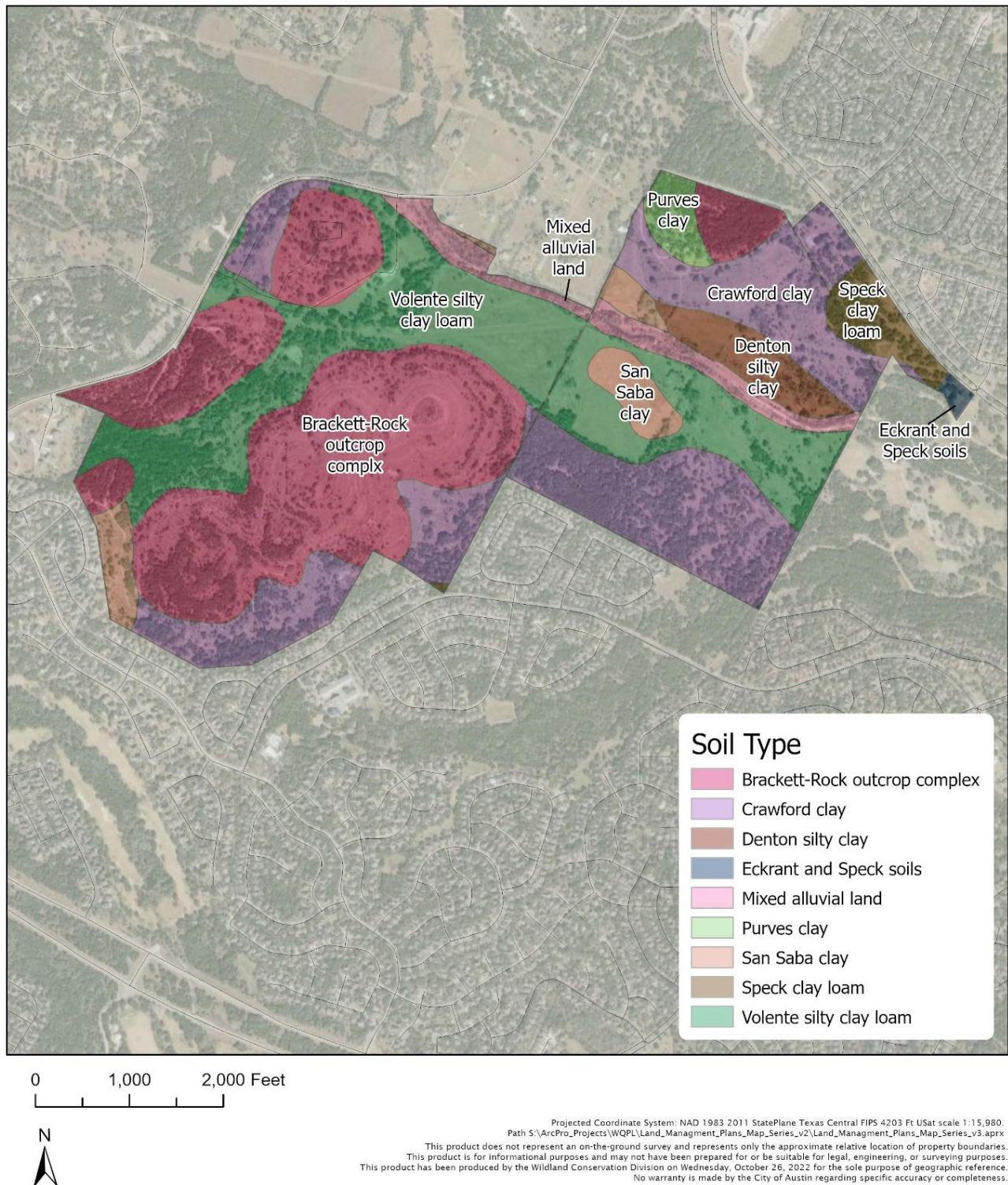


Figure 12: Soil types of Slaughter Creek (Mary Gay Maxwell) management unit.



Barton Creek

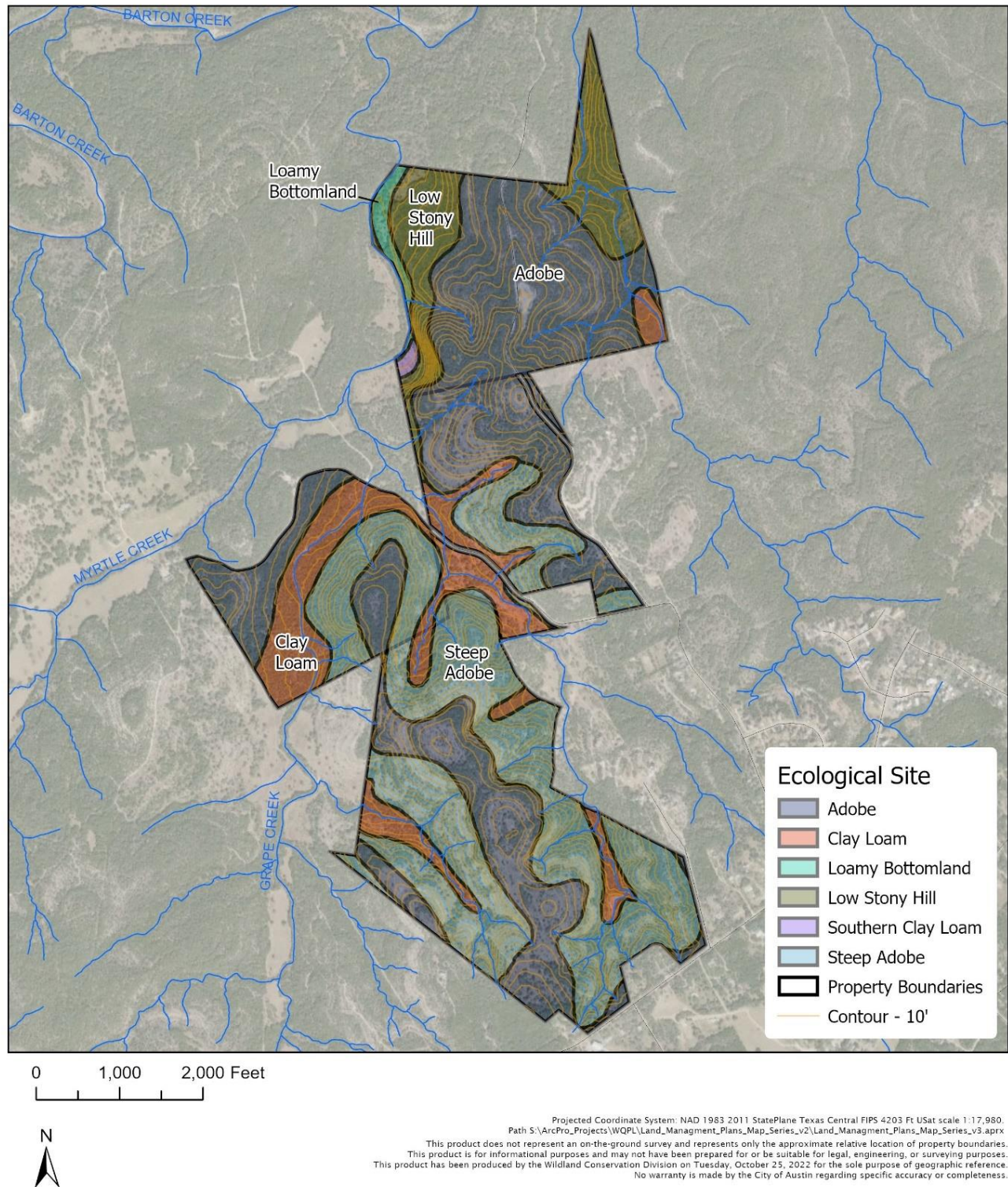


Figure 13: Ecological sites of Barton Creek management unit.



Barton Creek (Shudde Fath)

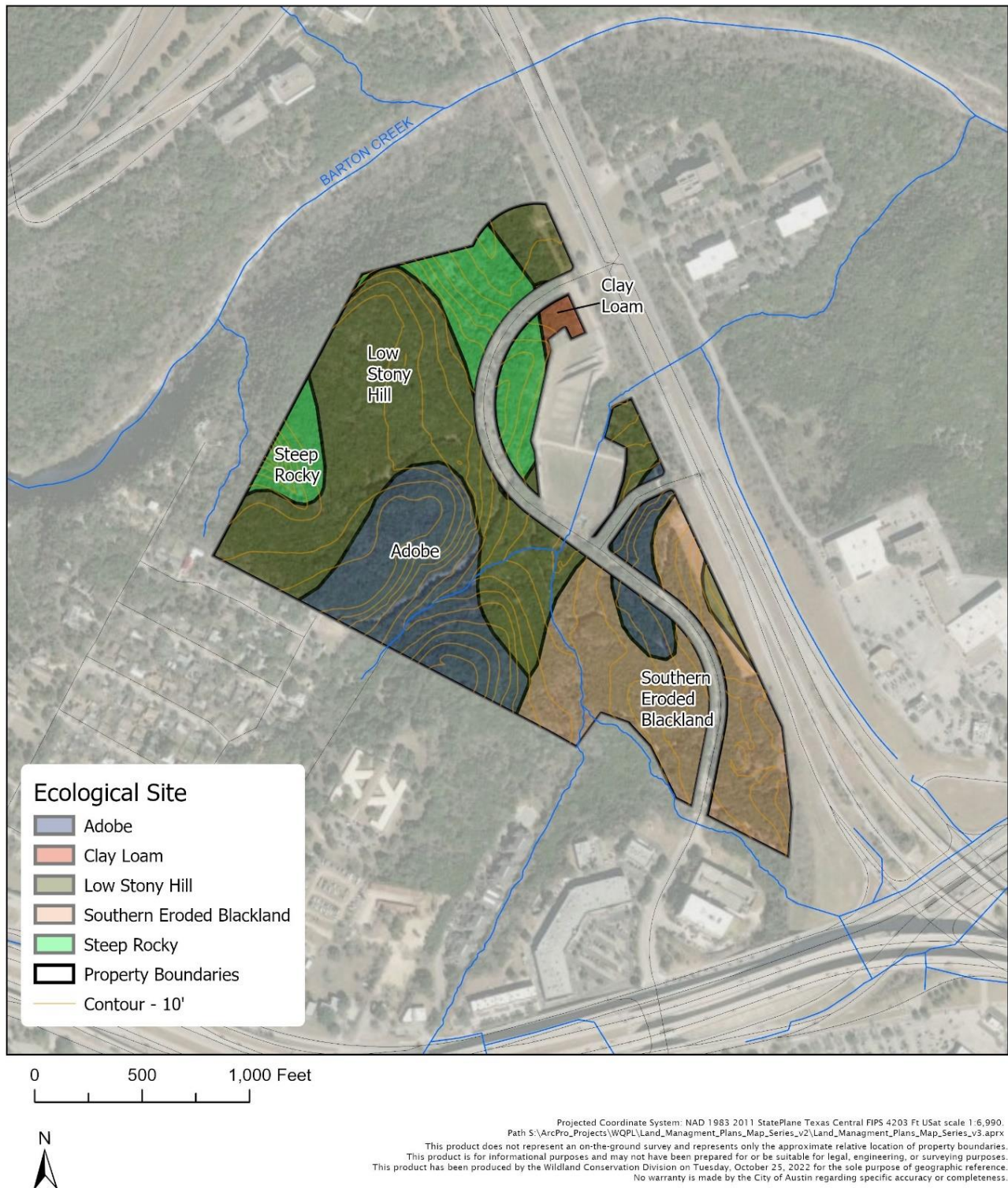


Figure 14: Ecological sites of Barton Creek (Shudde Fath) management unit.



Bear Creek (E)

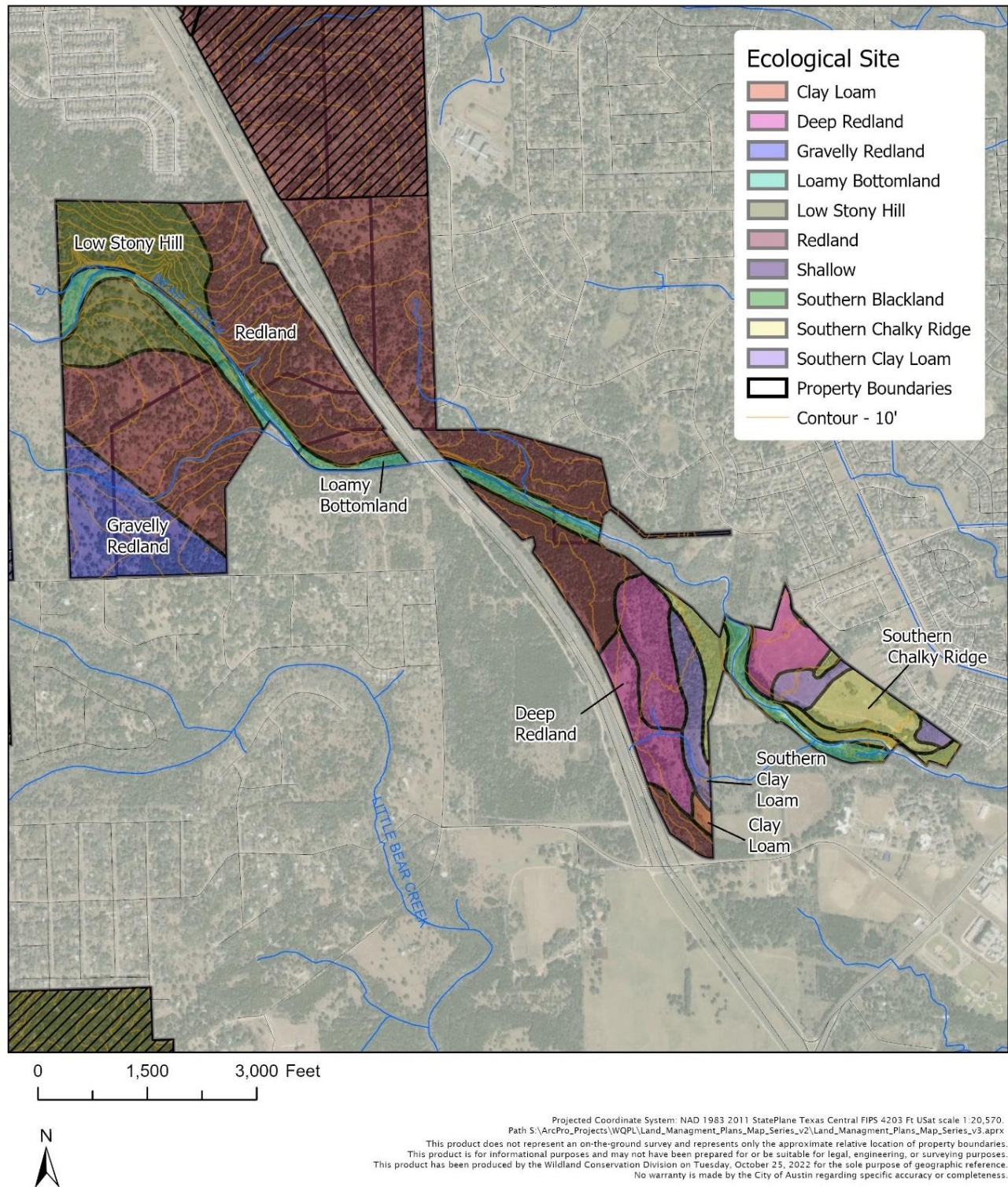


Figure 15: Ecological sites of Bear Creek management unit (eastern side).



Bear Creek (W)

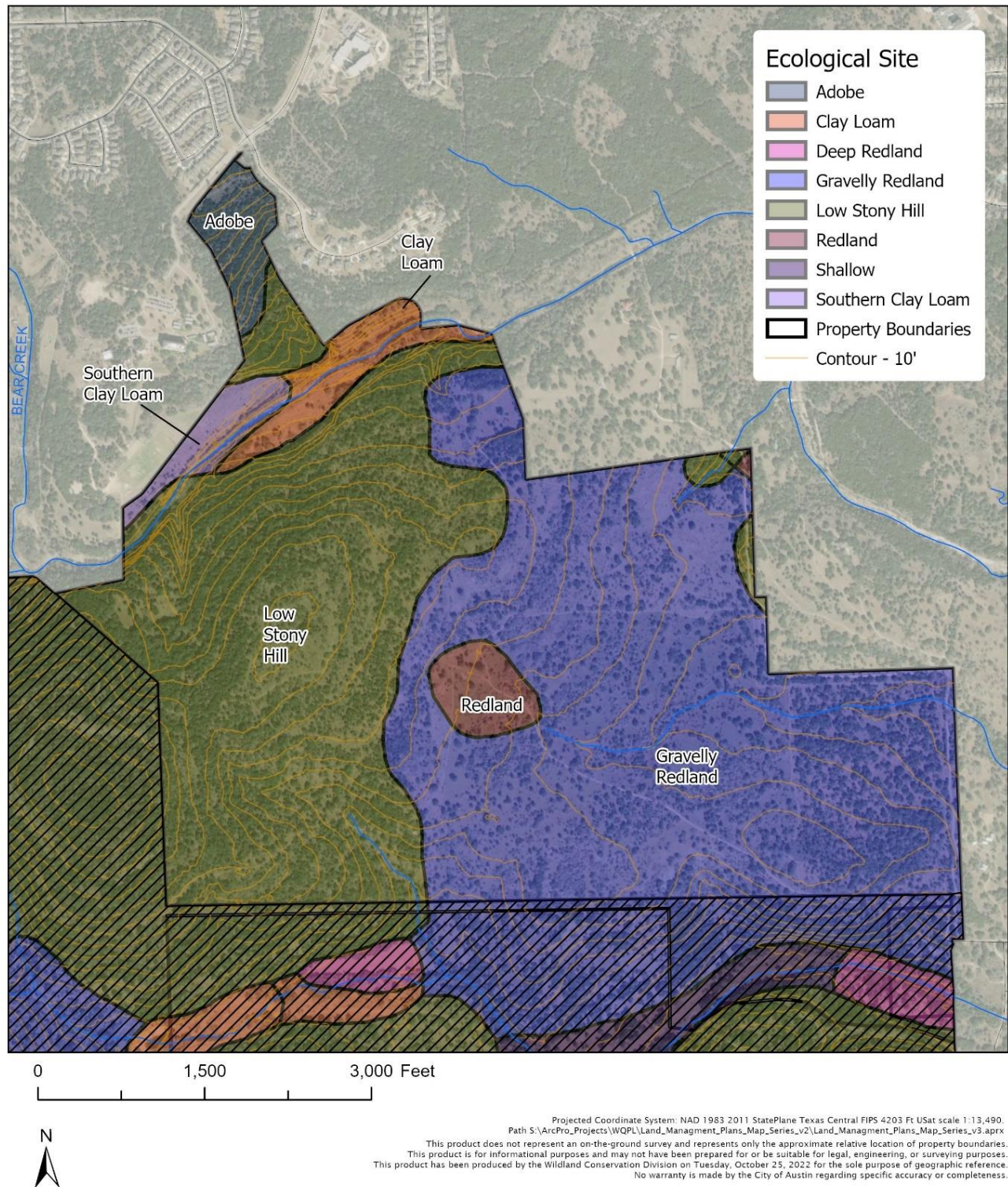


Figure 16: Ecological sites of Bear Creek management unit (western side).



Bull Creek

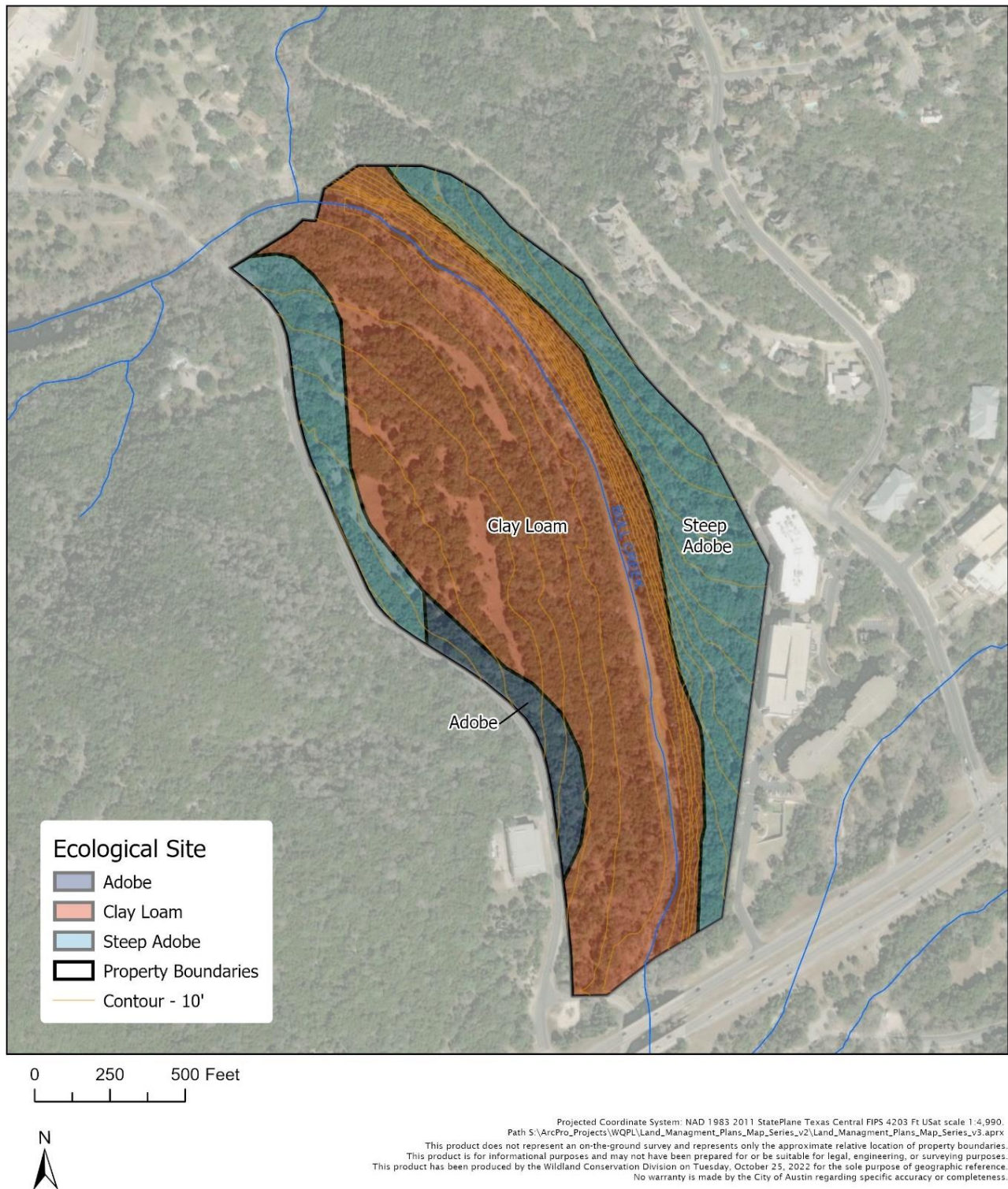


Figure 17: Ecological sites of Bull Creek management unit.



Little Barton Creek

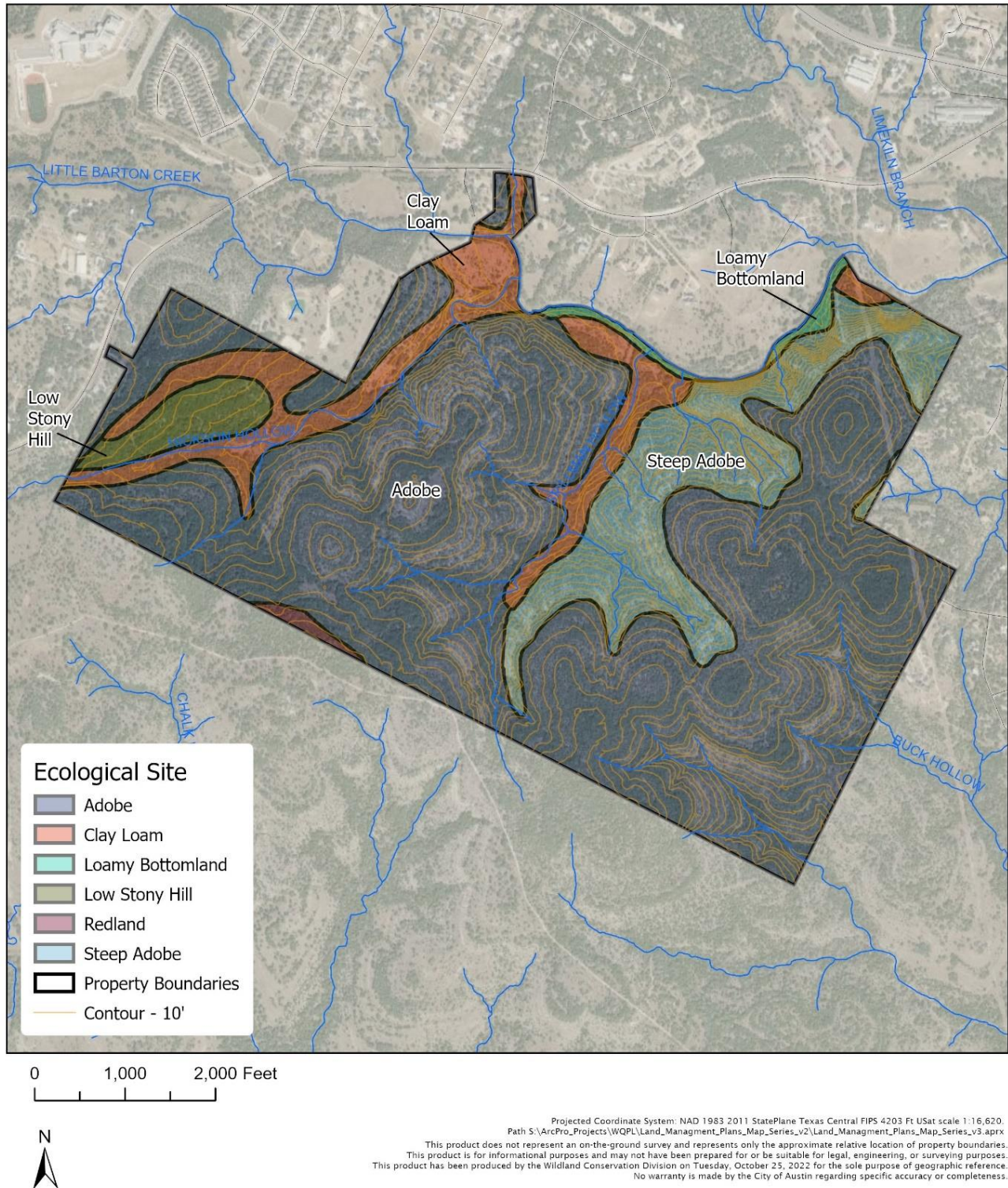


Figure 18: Ecological sites of Little Barton Creek management unit.



Little Bear Creek

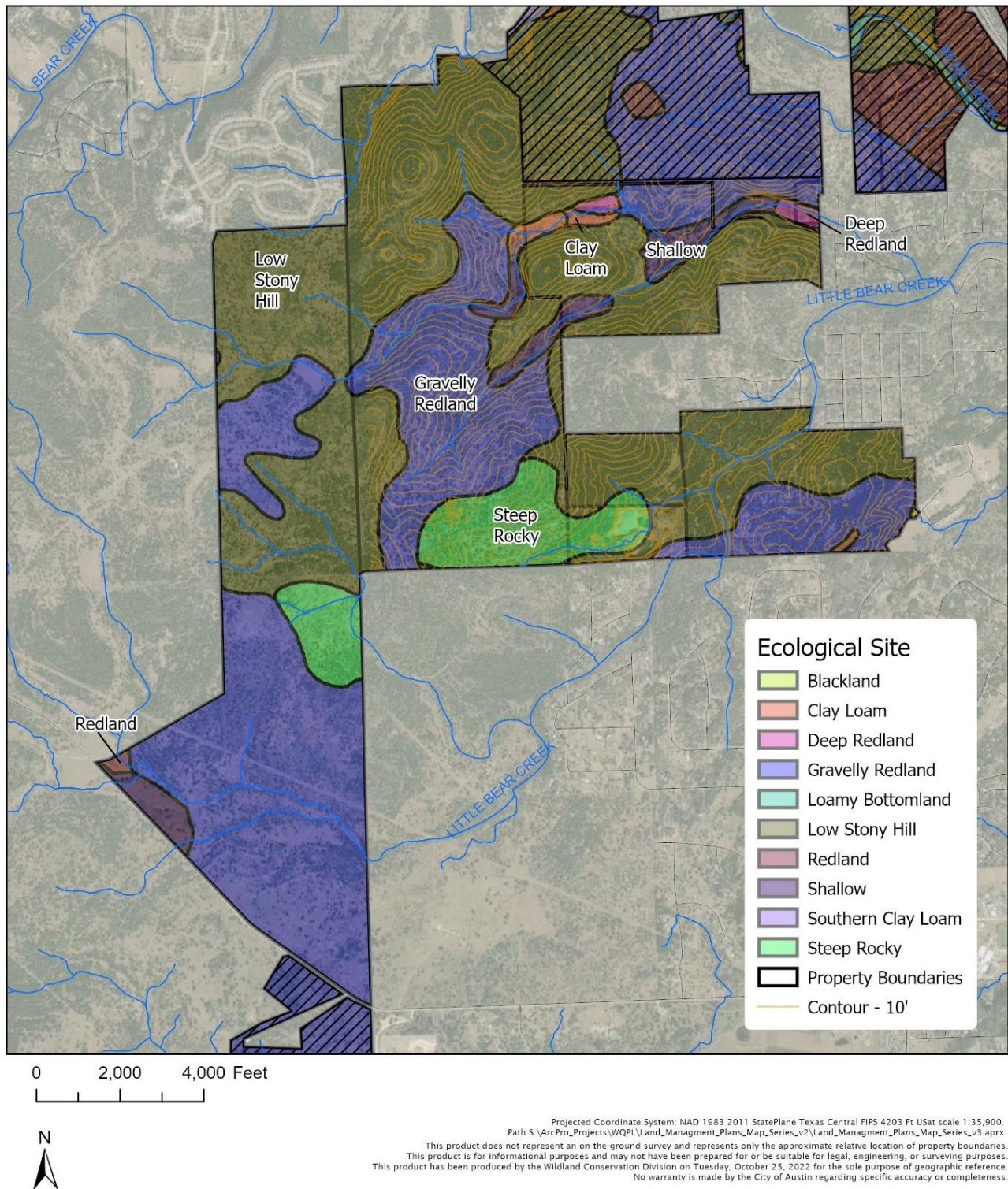


Figure 19: Ecological sites of Little Bear Creek management unit.



Onion Creek

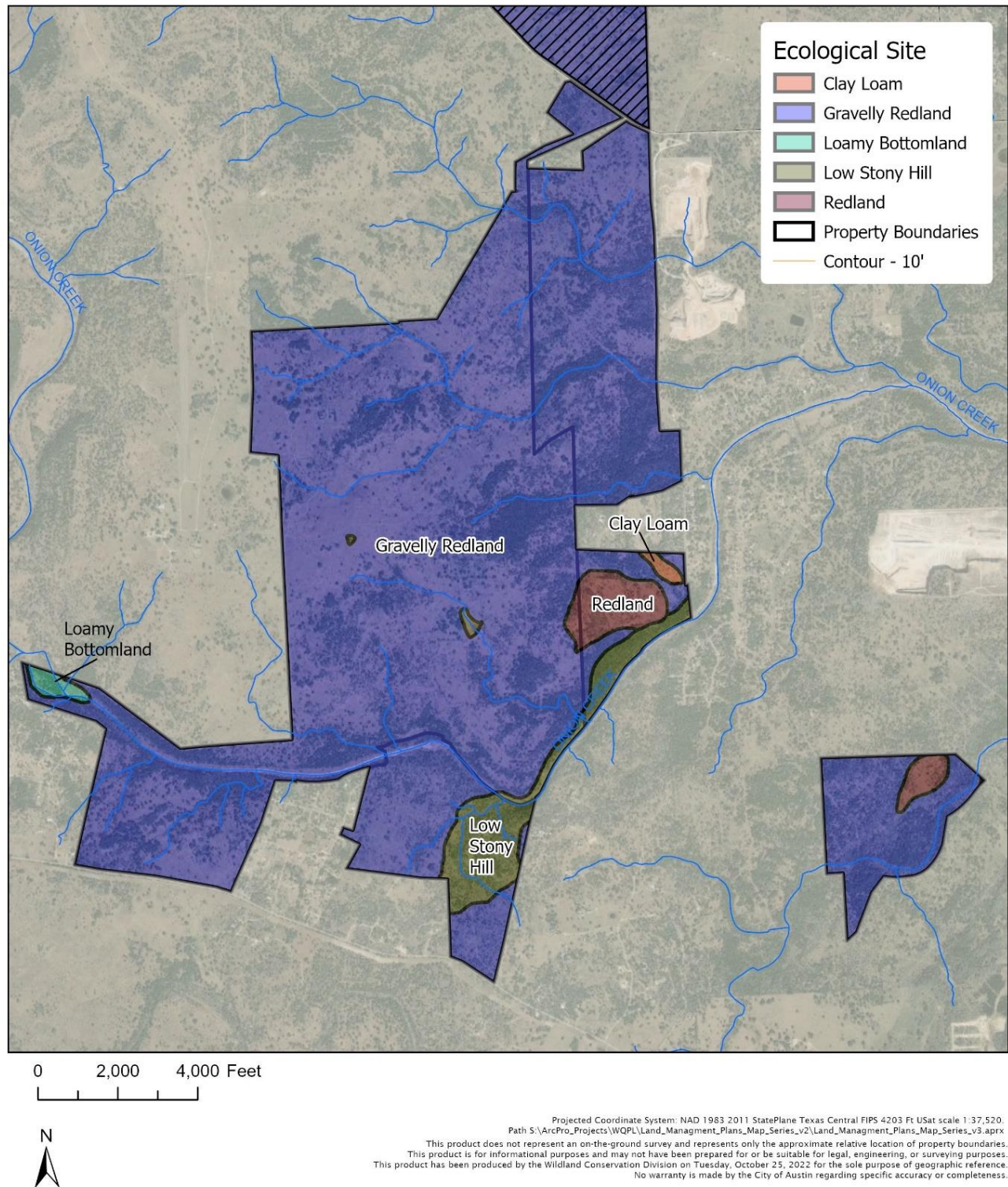


Figure 20: Ecological sites of Onion Creek management unit.



Slaughter Creek

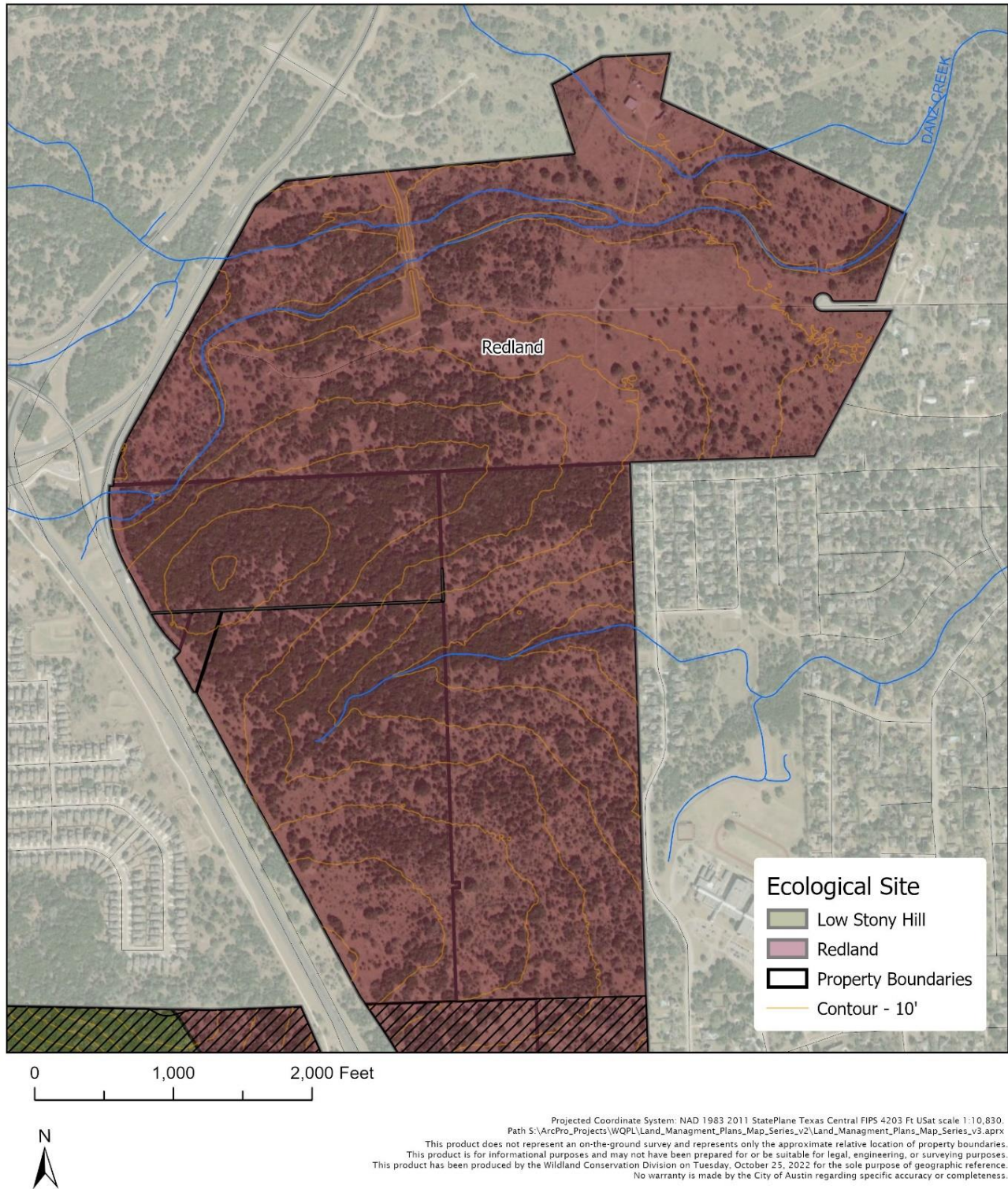


Figure 21: Ecological sites of Slaughter Creek management unit.



Slaughter Creek (Brodie Wild)



Figure 22: Ecological sites of Slaughter Creek (Brodie Wild) management unit.



Slaughter Creek (MGM)

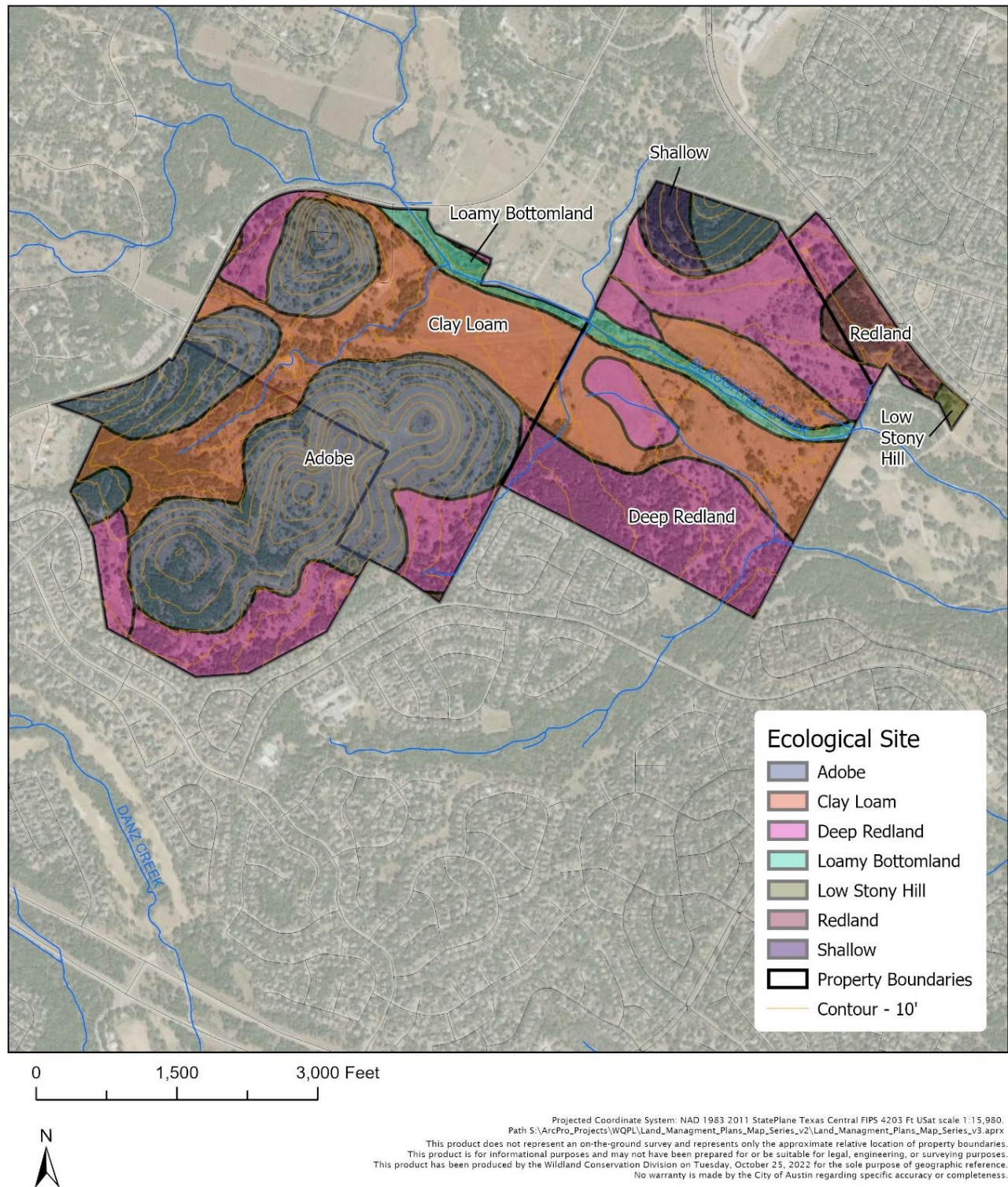


Figure 23: Ecological sites of Slaughter Creek (Mary Gay Maxwell) management unit.



Barton Creek Management Unit

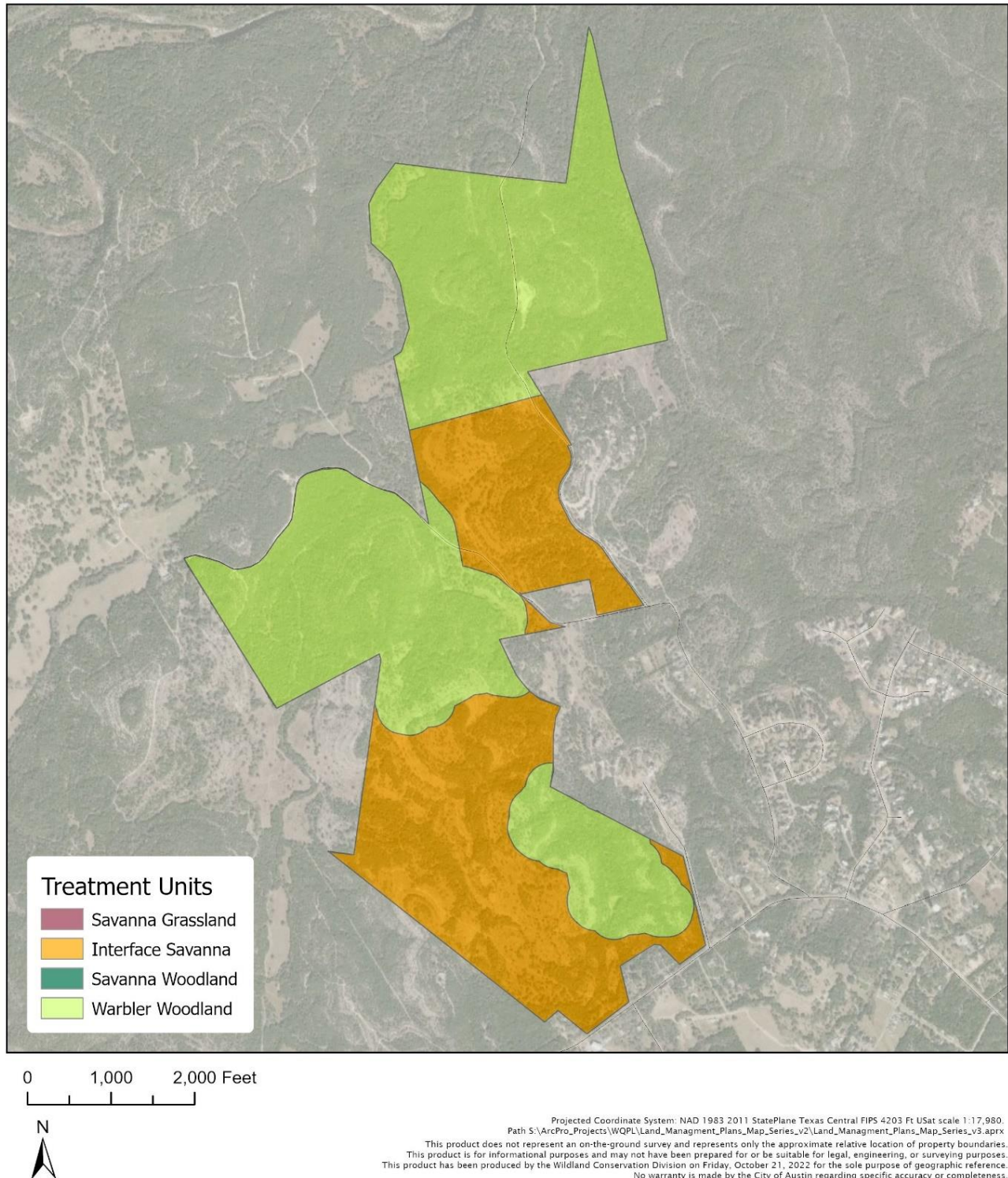


Figure 24: Land cover categories of Barton Creek management unit.



Barton Creek (Shudde Fath) Management Unit



Figure 25: Land cover categories of Barton Creek (Shudde Fath) management unit.



Bear Creek (E) Management Unit

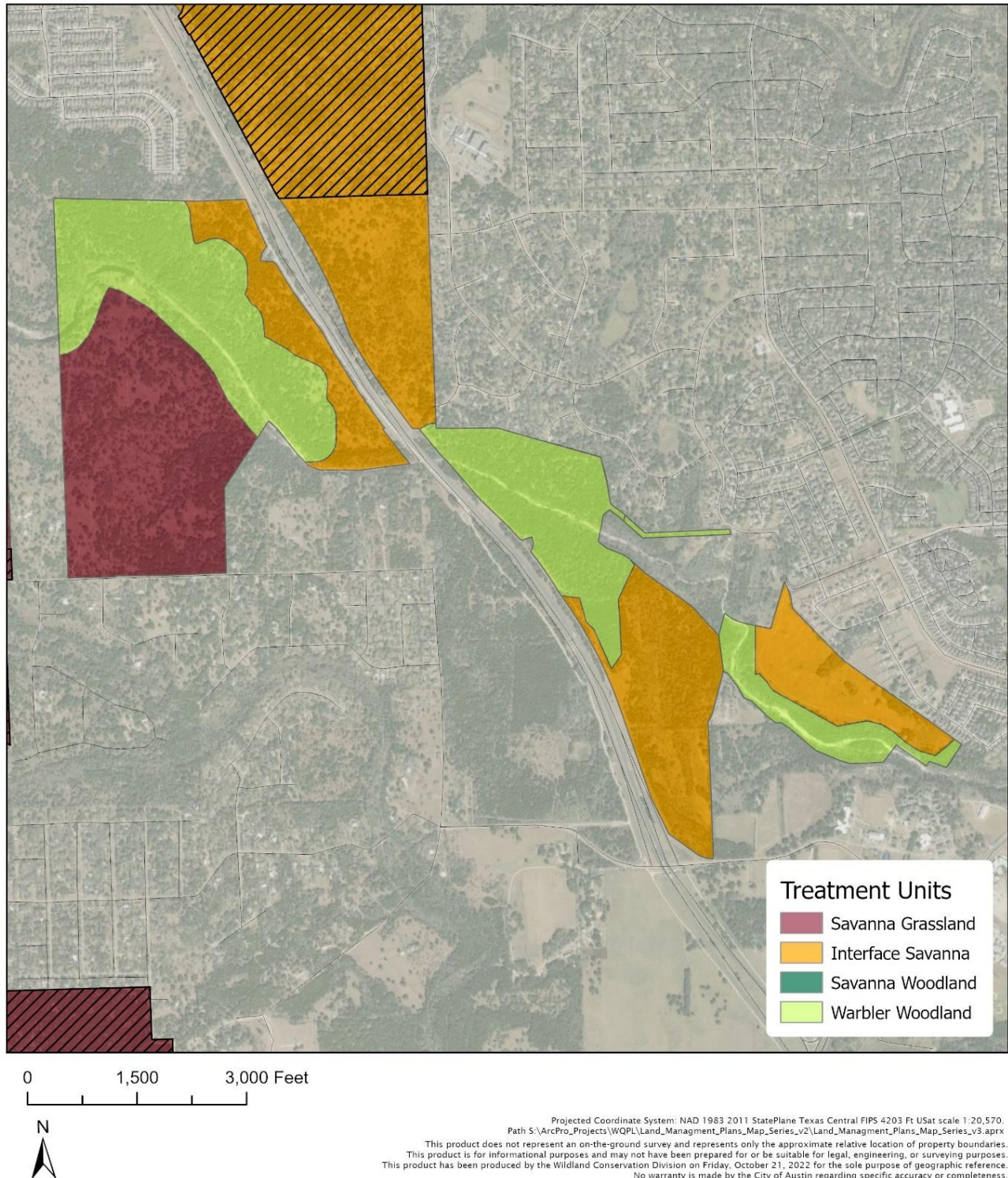


Figure 26: Land cover categories of Bear Creek management unit (easter side).



Bear Creek (W) Management Unit

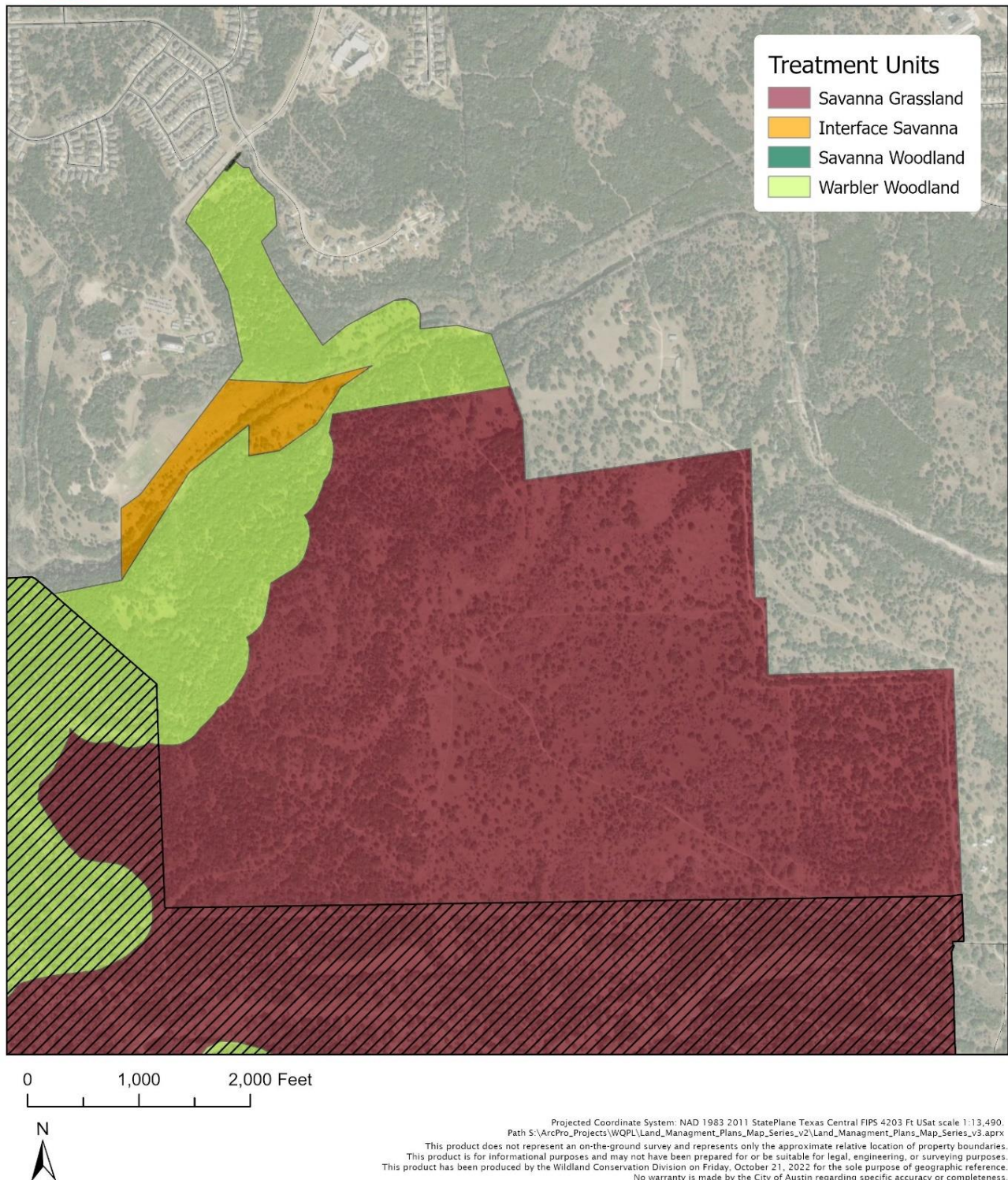


Figure 27: Land cover categories of Bear Creek management unit (western side).



Bull Creek Management Unit

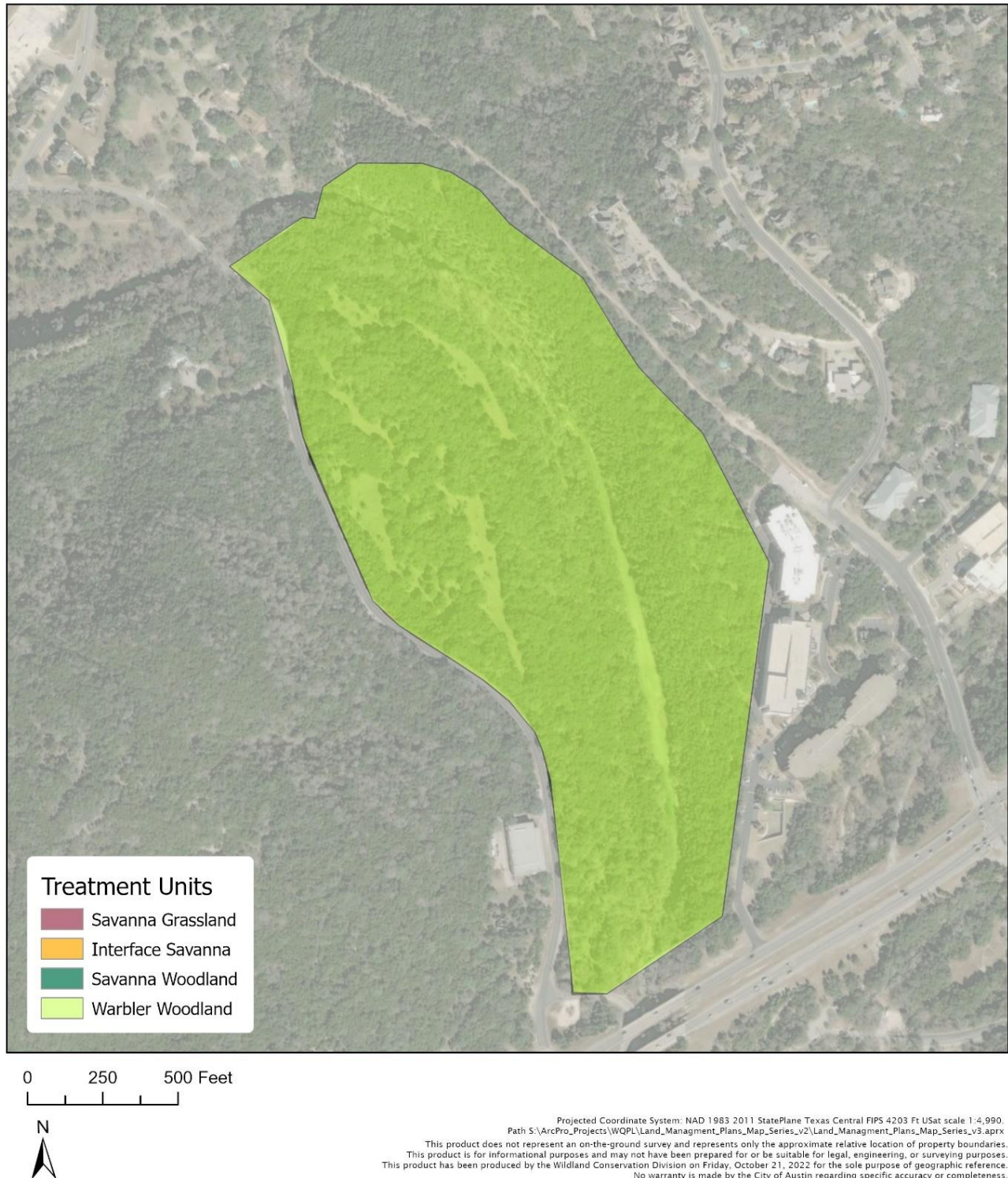


Figure 28: Land cover categories of Bull Creek management unit.



Little Barton Creek Management Unit

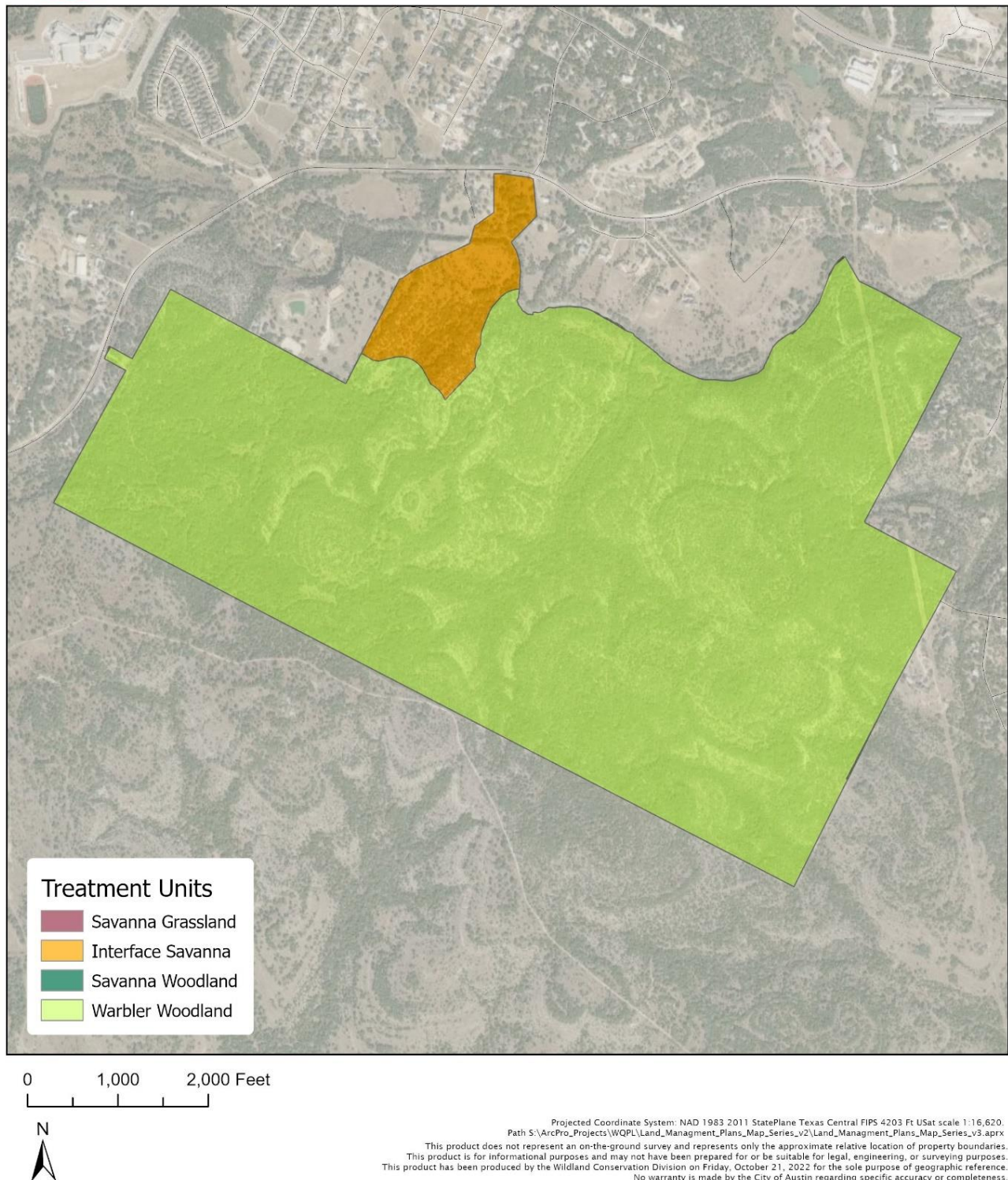


Figure 29: Land cover categories of Little Barton Creek management unit.



Little Bear Creek Management Unit

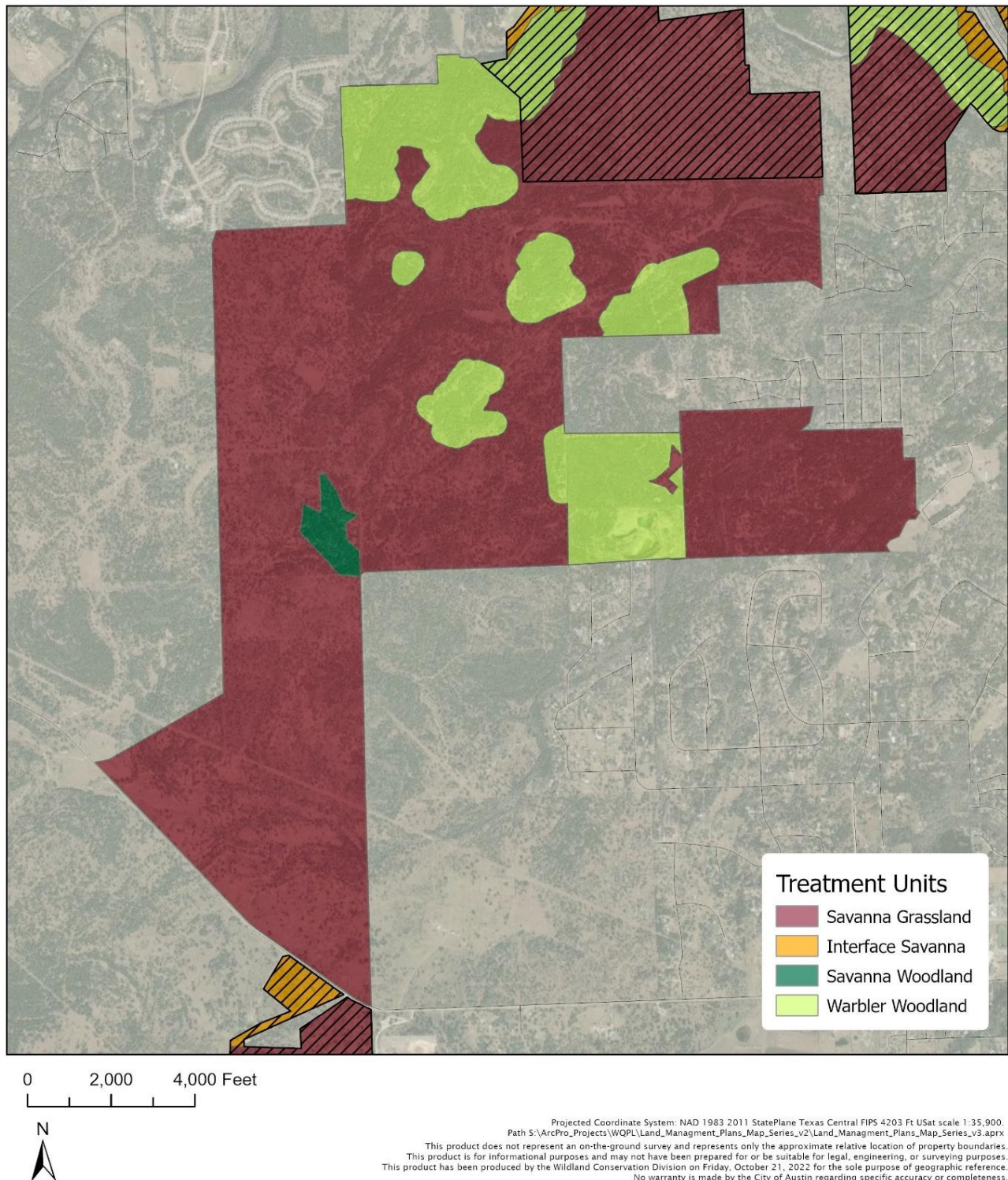


Figure 30: Land cover categories of Little Bear Creek management unit.



Onion Creek Management Unit

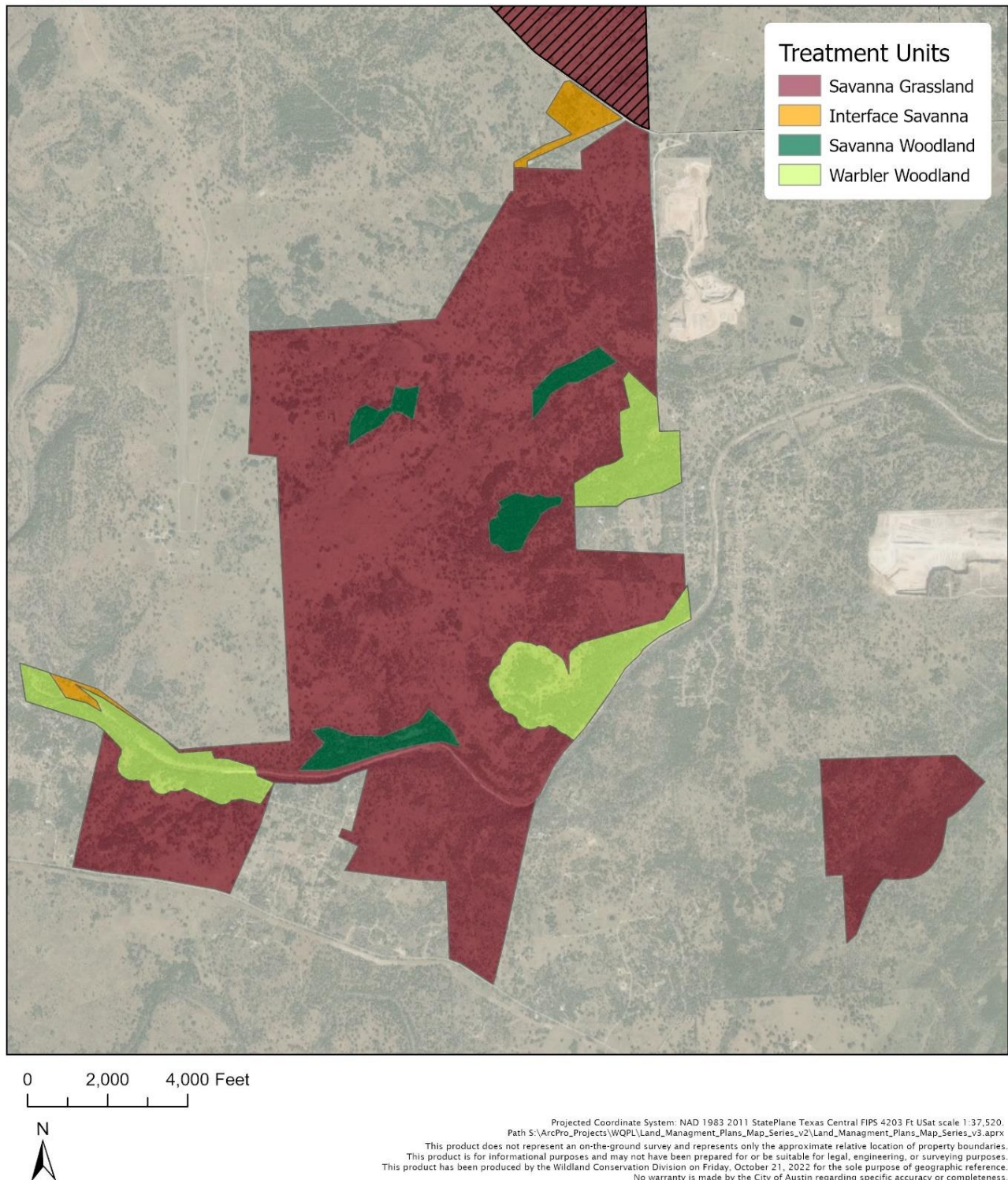


Figure 31: Land cover categories of Onion Creek management unit.



Slaughter Creek Management Unit

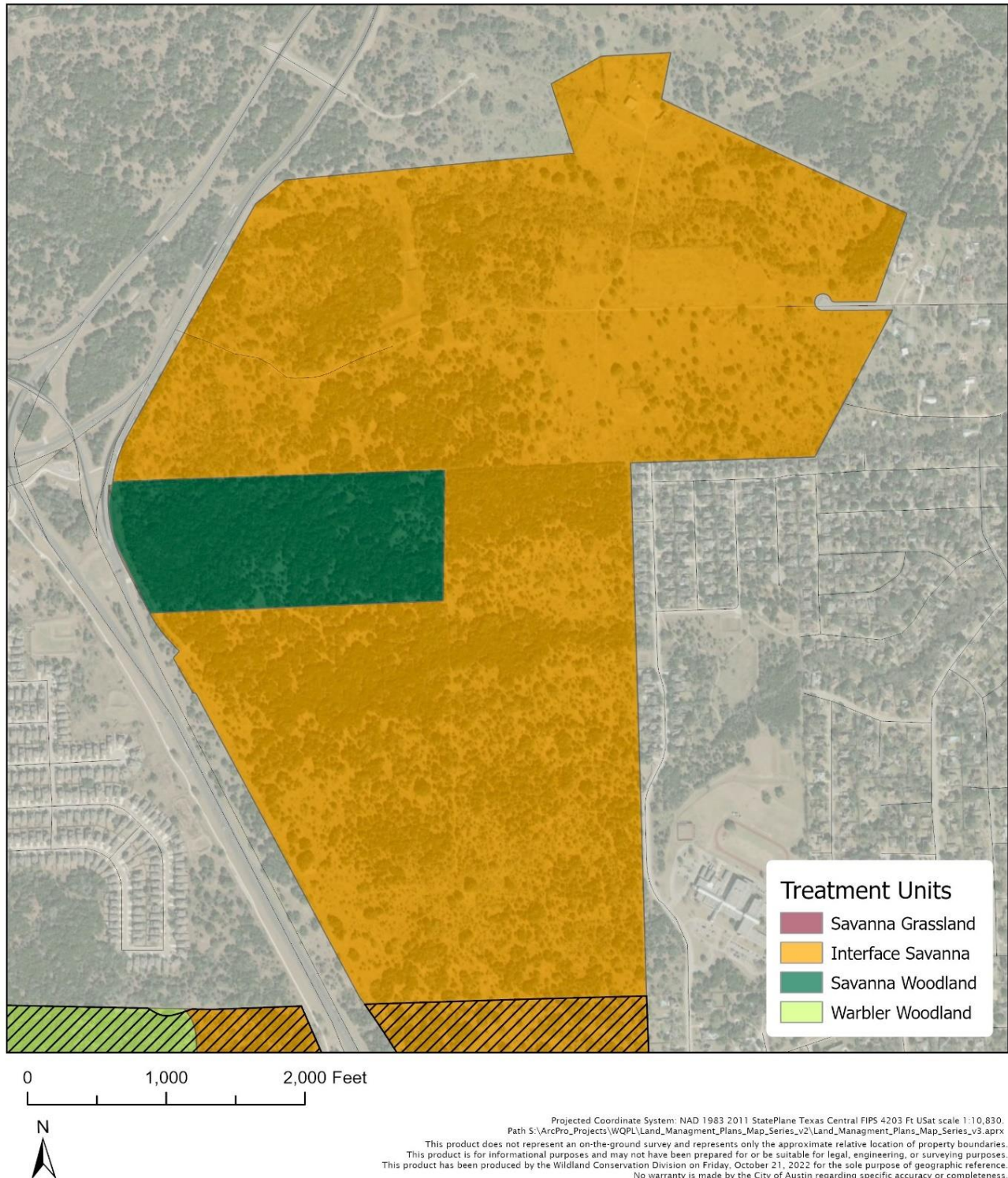


Figure 32: Land cover categories of Slaughter Creek management unit.



Slaughter Creek (Brodie Wild) Management Unit



Figure 33: Land cover categories of Slaughter Creek (Brodie Wild) management unit.



Slaughter Creek (MGM) Management Unit

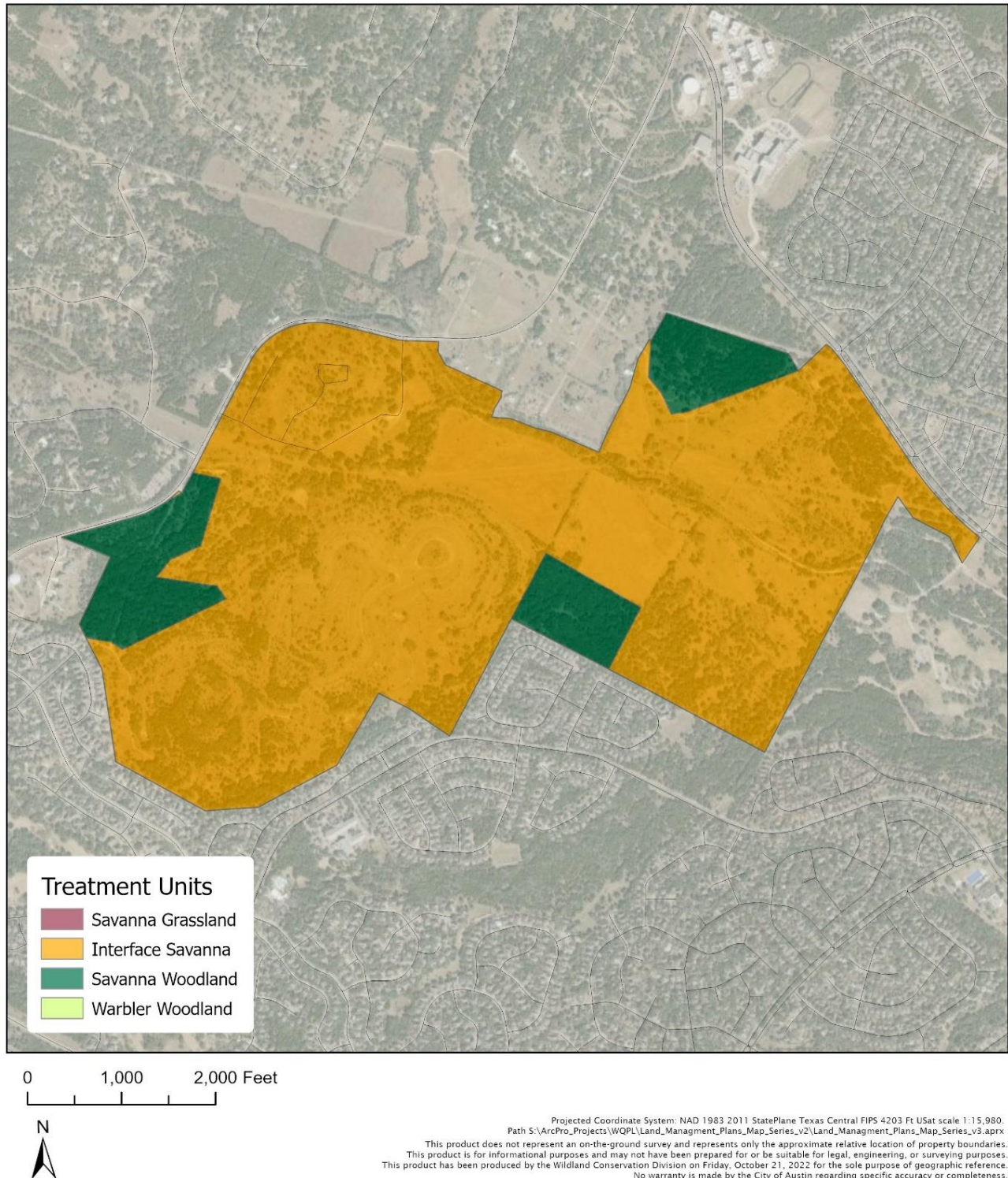


Figure 34: Land cover categories of Slaughter Creek (Mary Gay Maxwell) management unit.

Barton Creek

Treatment Frequency

Mean Years per Treatment Including Thinning or Prescribed Burning.

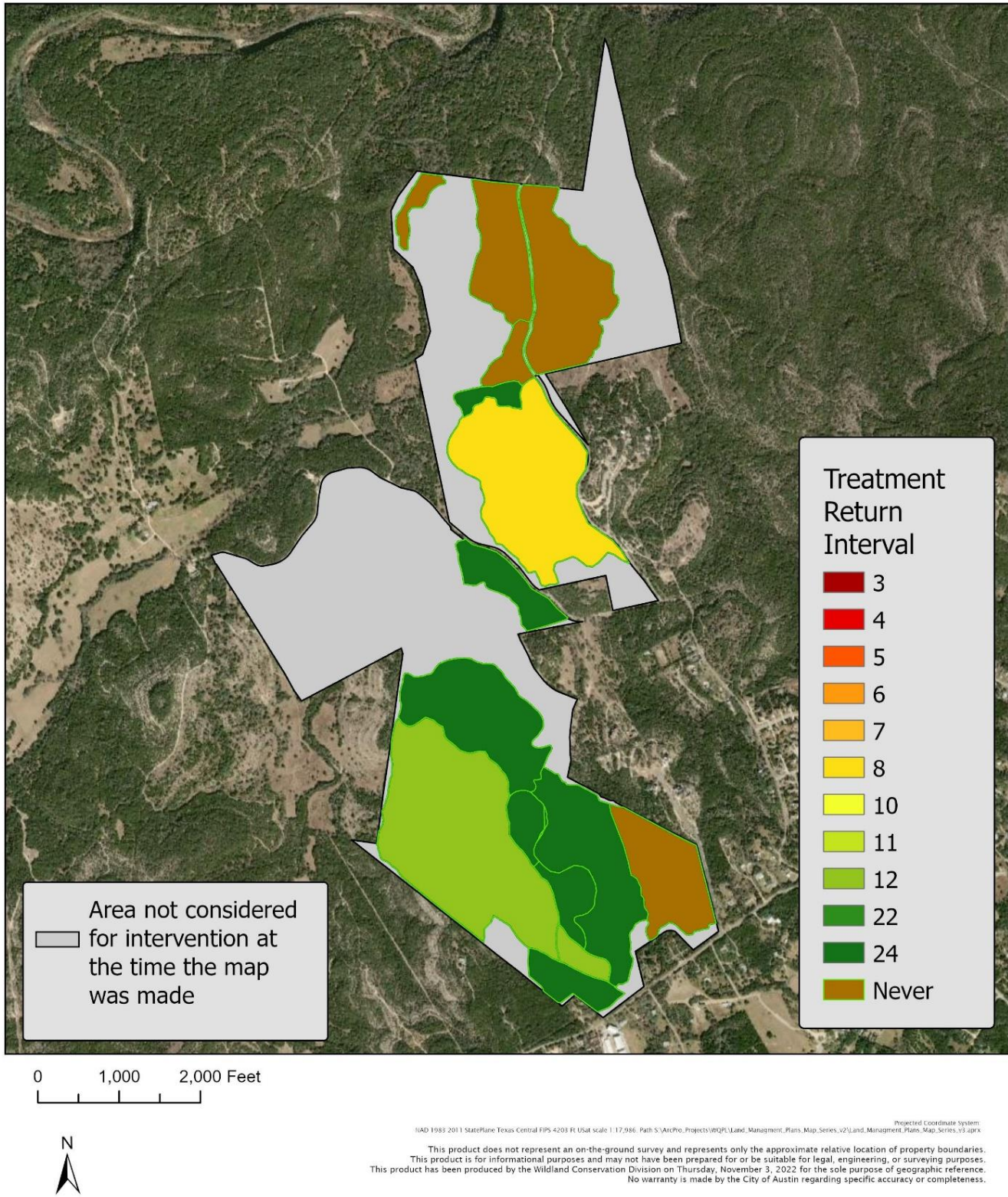


Figure 35: Treatment frequency map for Barton Creek management unit.

Bear Creek (E) Treatment Frequency

Mean Years per Treatment Including Thinning or Prescribed Burning.

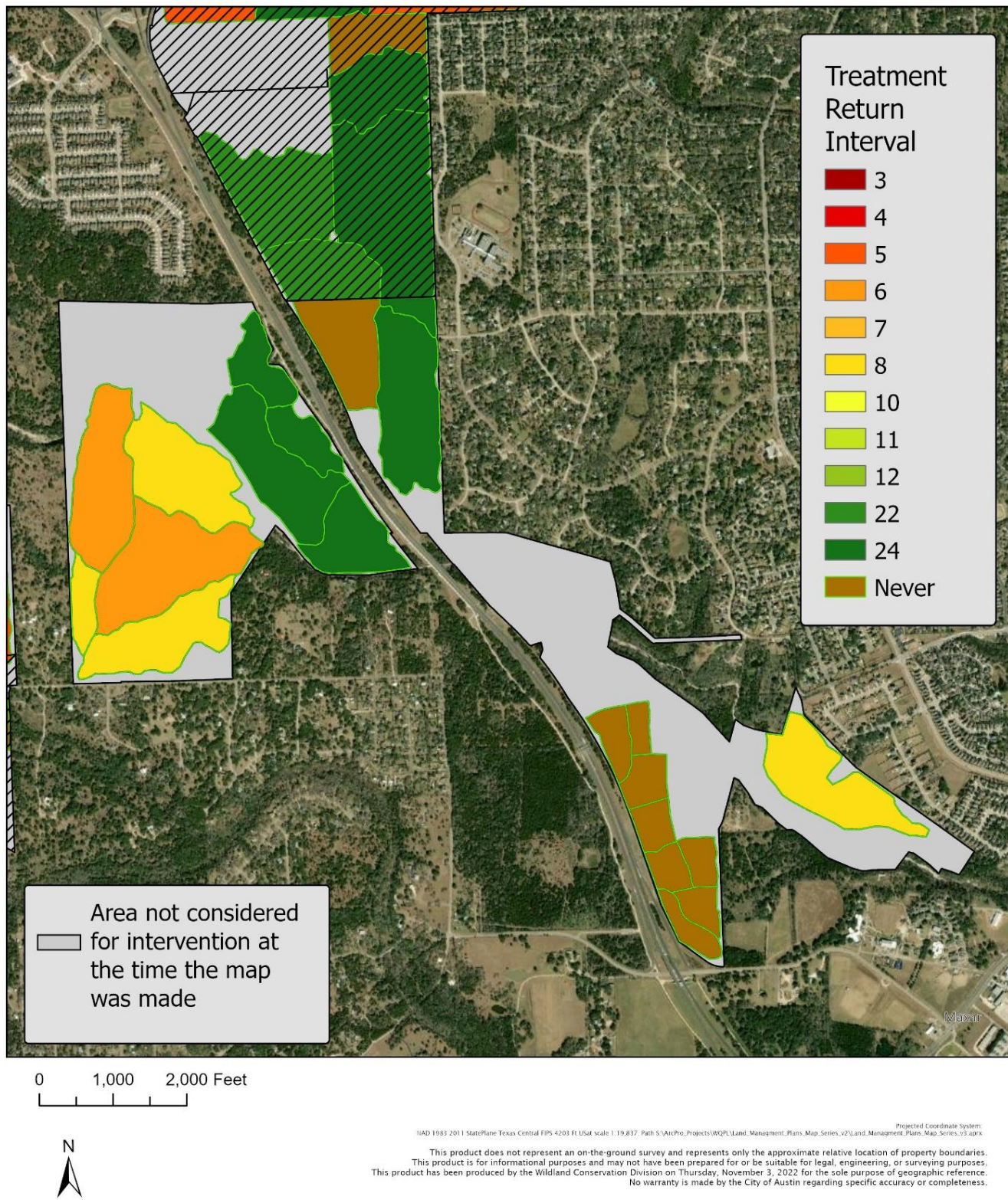


Figure 36: Treatment frequency map for Bear Creek management unit (eastern side).

Bear Creek (W) Treatment Frequency

Mean Years per Treatment Including Thinning or Prescribed Burning.

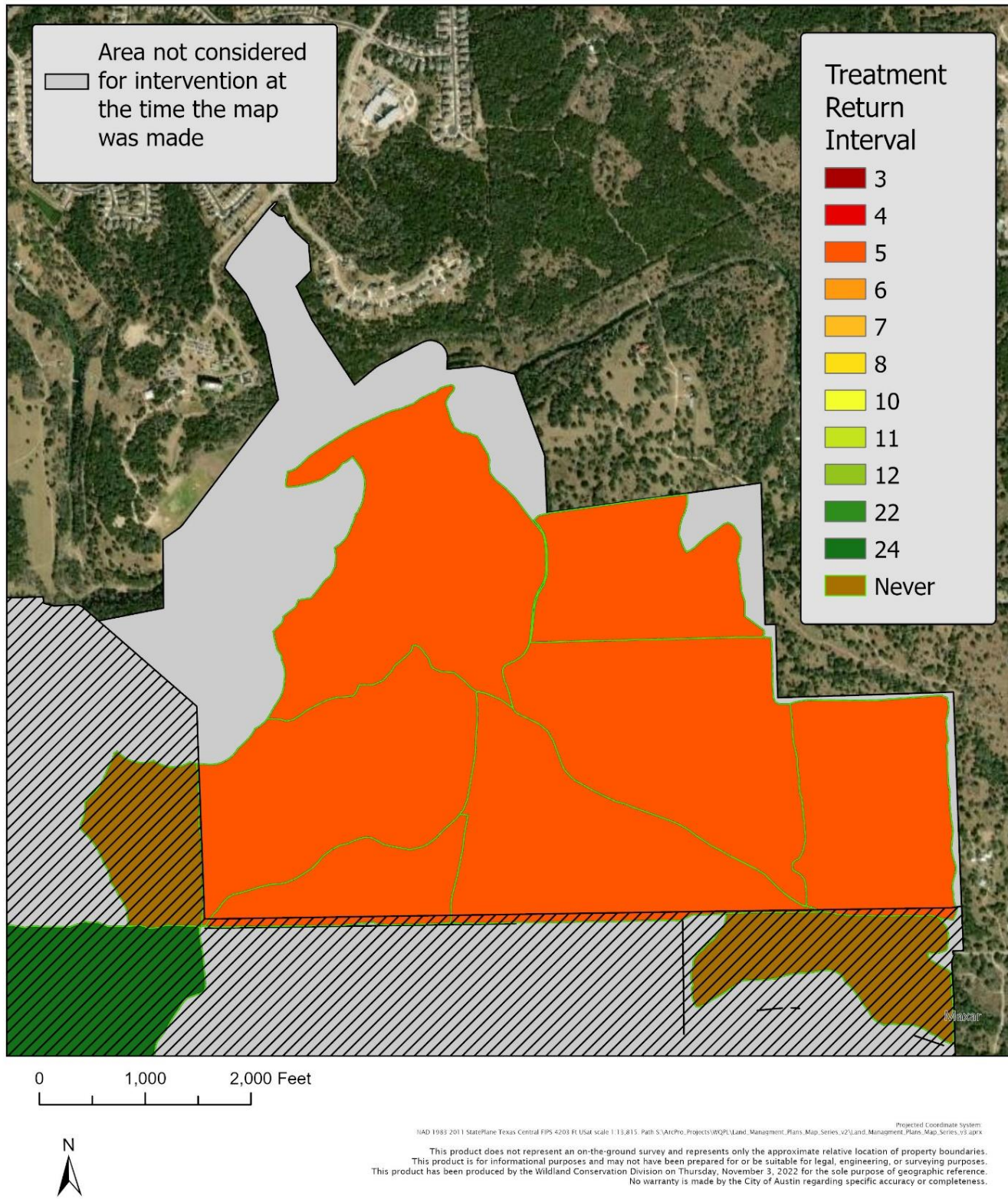


Figure 37: Treatment frequency map for Bear Creek management unit (western side).

Little Bear Creek Treatment Frequency

Mean Years per Treatment Including Thinning or Prescribed Burning.

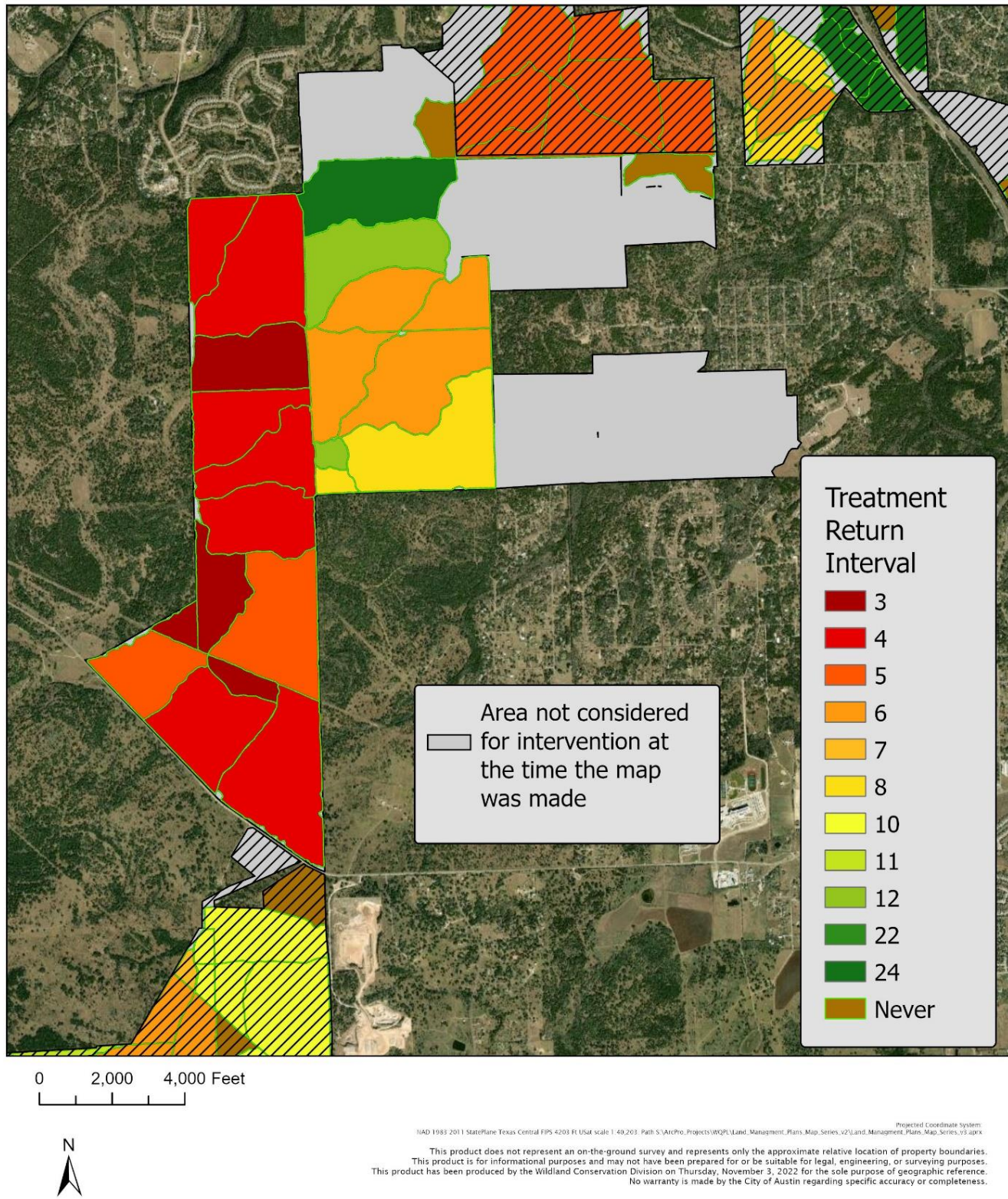


Figure 38: Treatment frequency map for Little Bear Creek management unit.

Onion Creek Treatment Frequency

Mean Years per Treatment Including Thinning or Prescribed Burning.

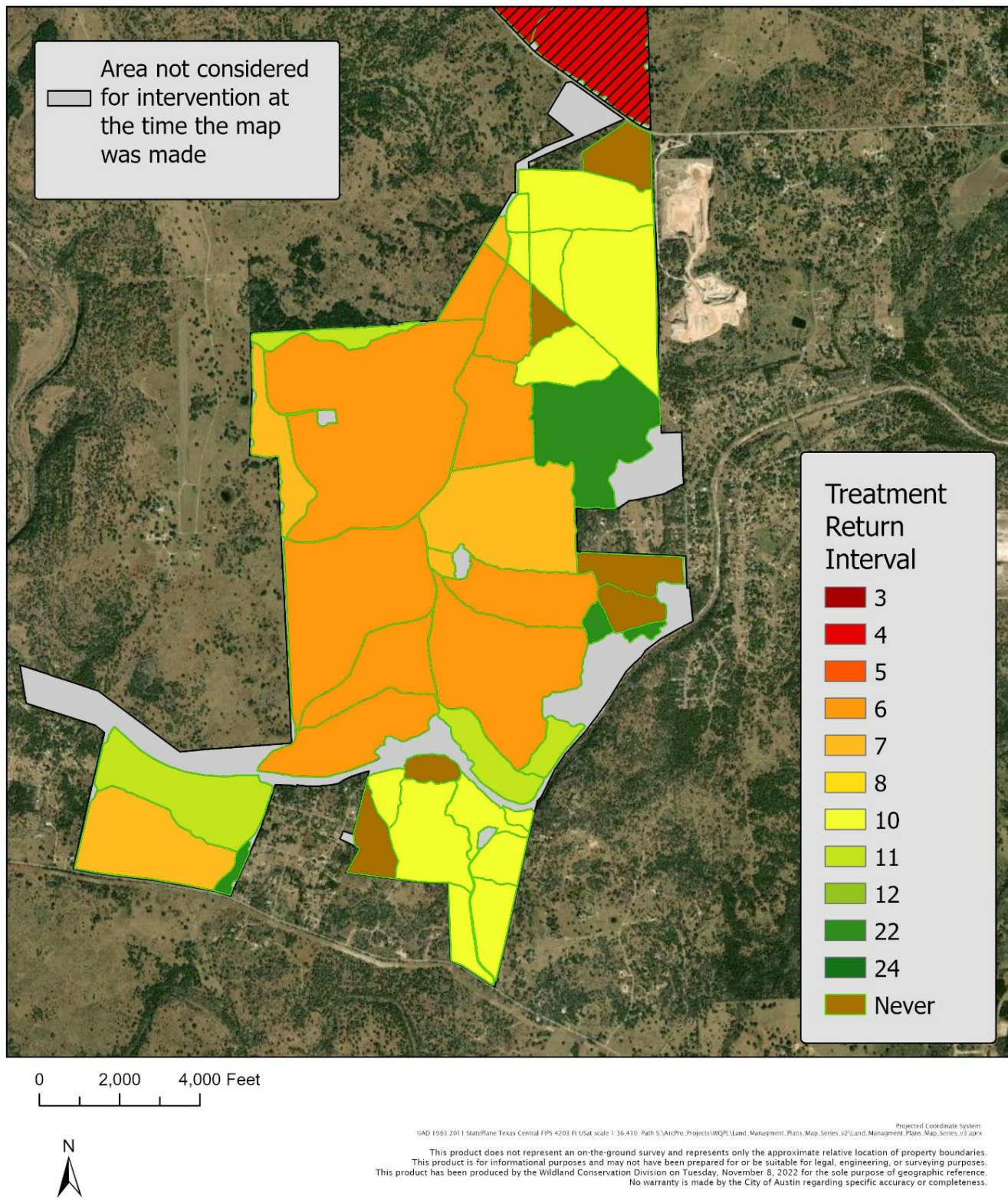


Figure 39: Treatment frequency map for Onion Creek management unit.

Slaughter Creek Treatment Frequency

Mean Years per Treatment Including Thinning or Prescribed Burning.

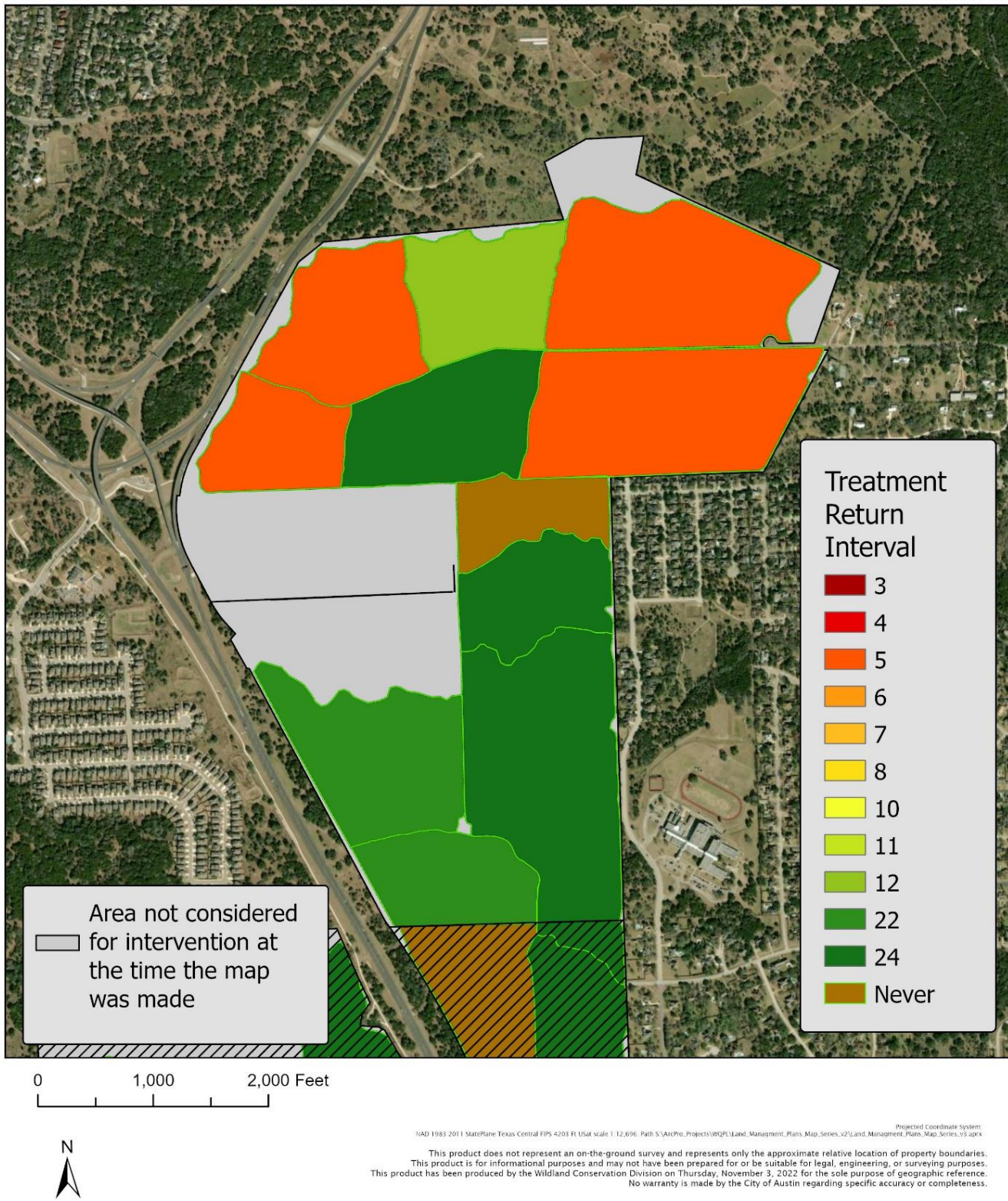


Figure 40: Treatment frequency map for Slaughter Creek management unit.

Slaughter Creek (MGM) Treatment Frequency

Mean Years per Treatment Including Thinning or Prescribed Burning.

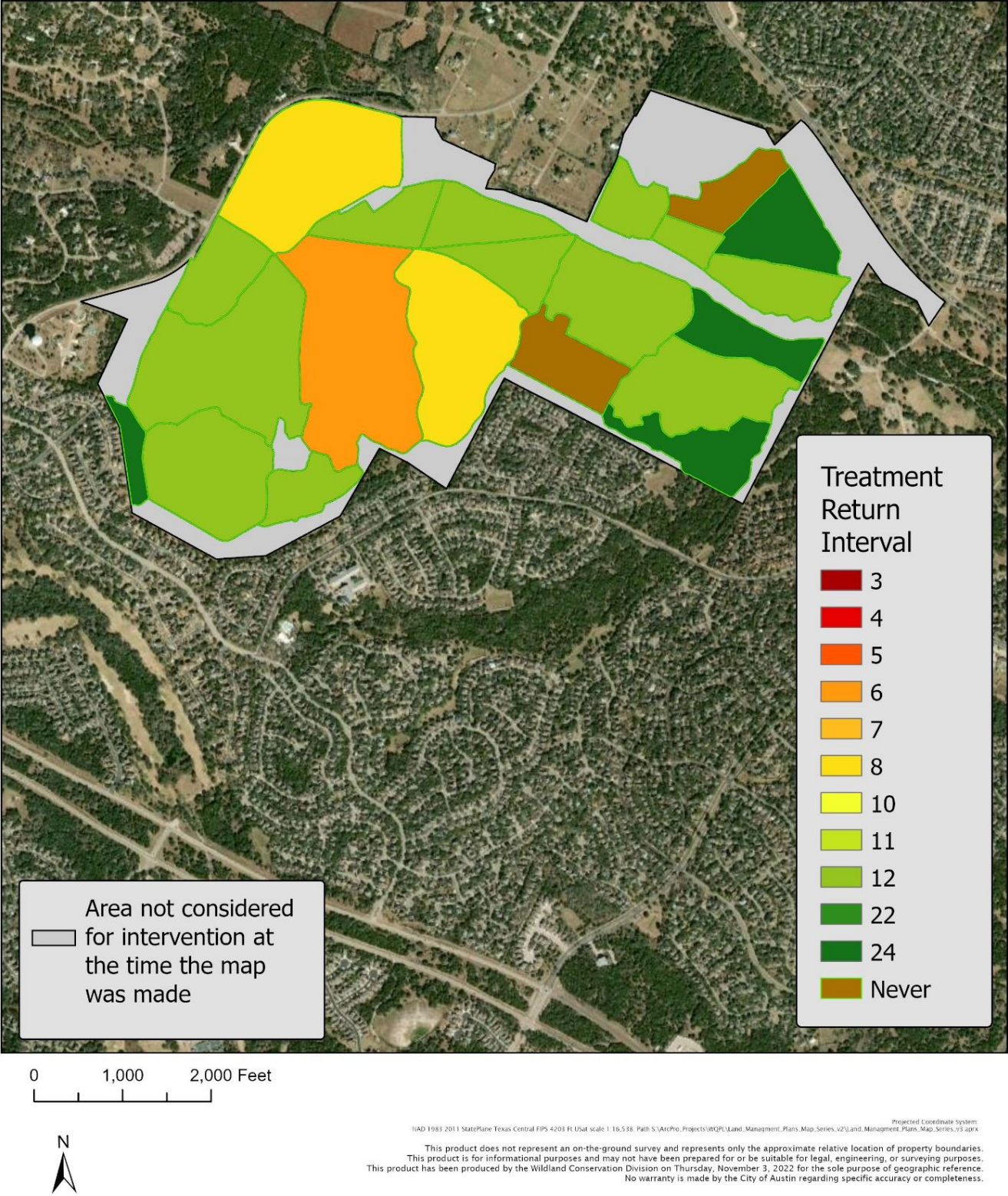


Figure 41: Treatment frequency map for Slaughter Creek (Mary Gay Maxwell) management unit.