

Proposed Temporary Ingress and Egress Easement for Colony Park Central Health - 0 Loyola Lane - 8,813 Square Feet



FINANCIAL SERVICES DEPARTMENT

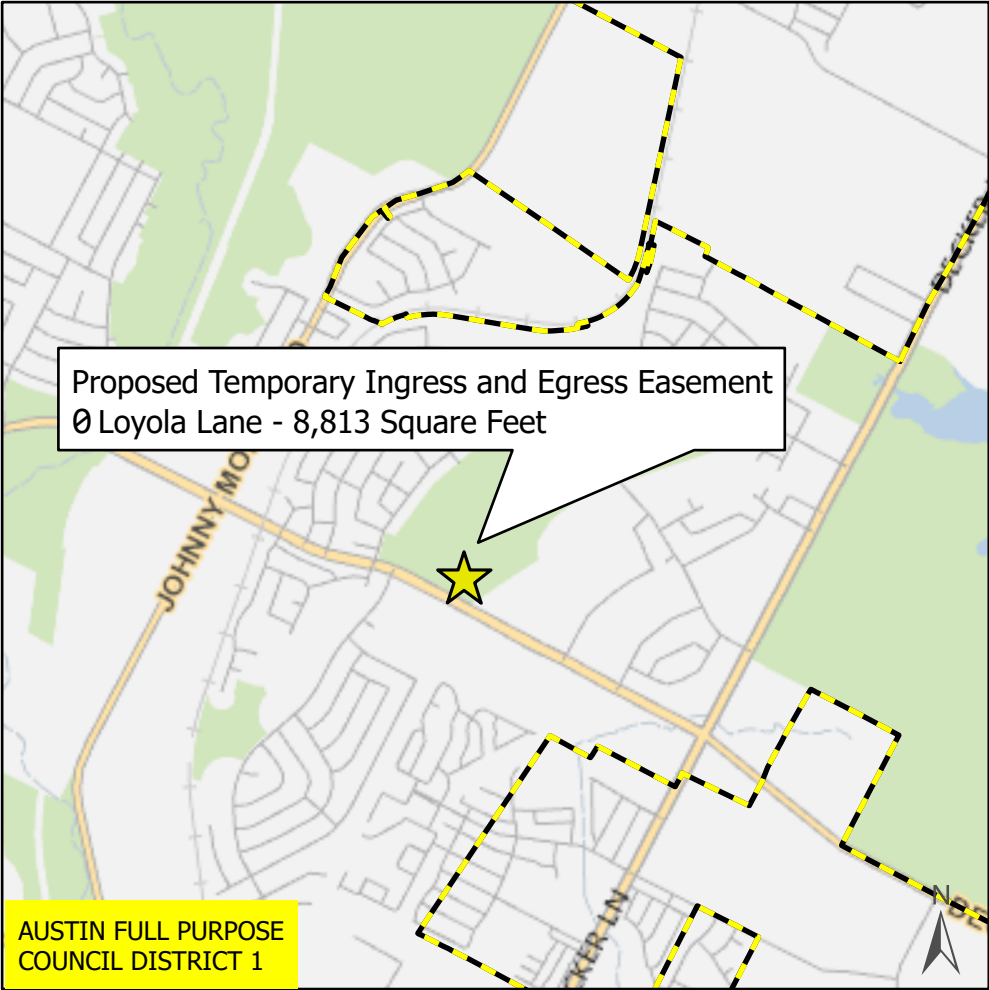
- City Council Districts
- TCAD Parcels

Nearmap US Vertical Imagery by ESRI

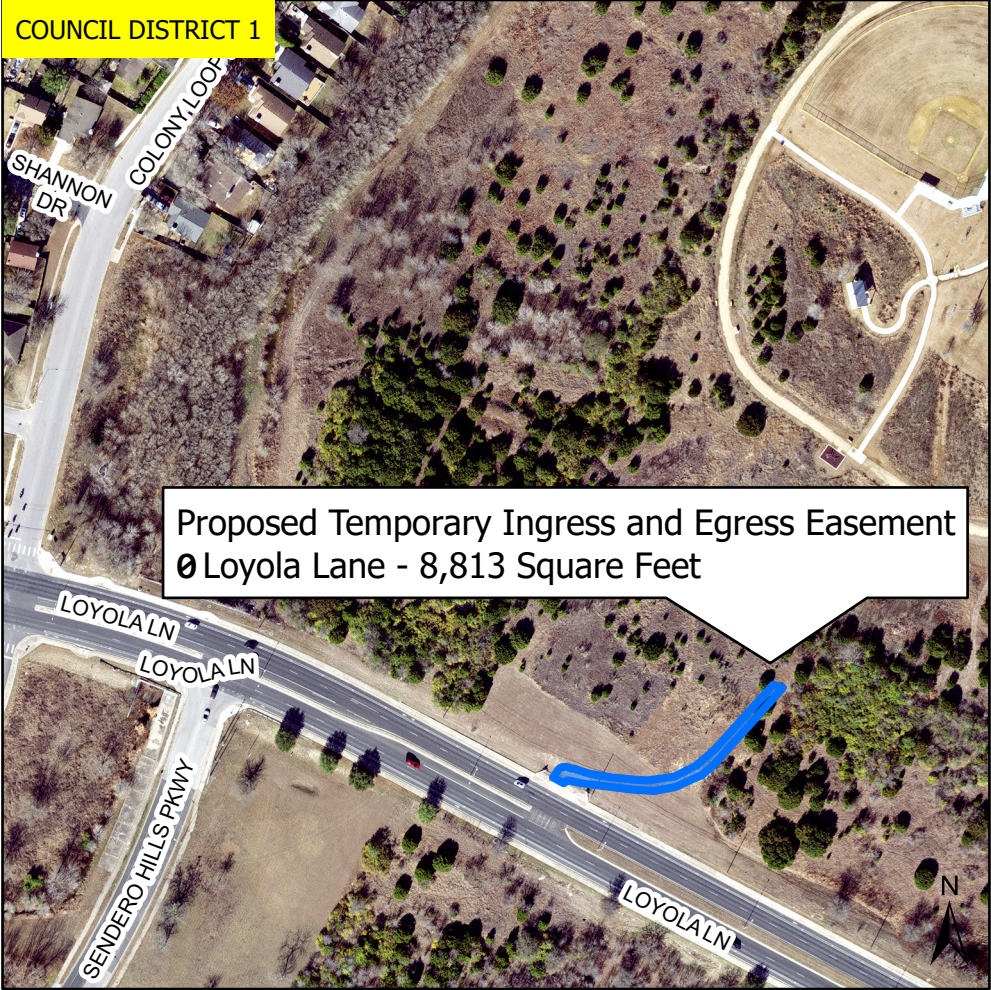
This product is for informational purposes and may not have been prepared for or be suitable for legal, engineering, or surveying purposes. It does not represent an on-the-ground survey and represents only the approximate relative location of property boundaries.

This product has been produced by the Financial Services Department for the sole purpose of geographic reference. No warranty is made by the City of Austin regarding specific accuracy or completeness.

Produced by Robert Starke - 12/15/2022



0 0.5 1 Miles



0 100 200 300 400 500 Feet